

5501 Whitaker Avenue

Philadelphia, PA

50,000 - 1,200,000 SF available for sublease



Property specifications

- 50,000 - 1,200,000 SF available
- 17' - 24' clear height
- Flexible suite sizes
- Updated LED lighting throughout
- Shared parking
- Additional trailer parking available
- 100% sprinklered
- Sublease available through December 2031
- Significantly below market lease rate

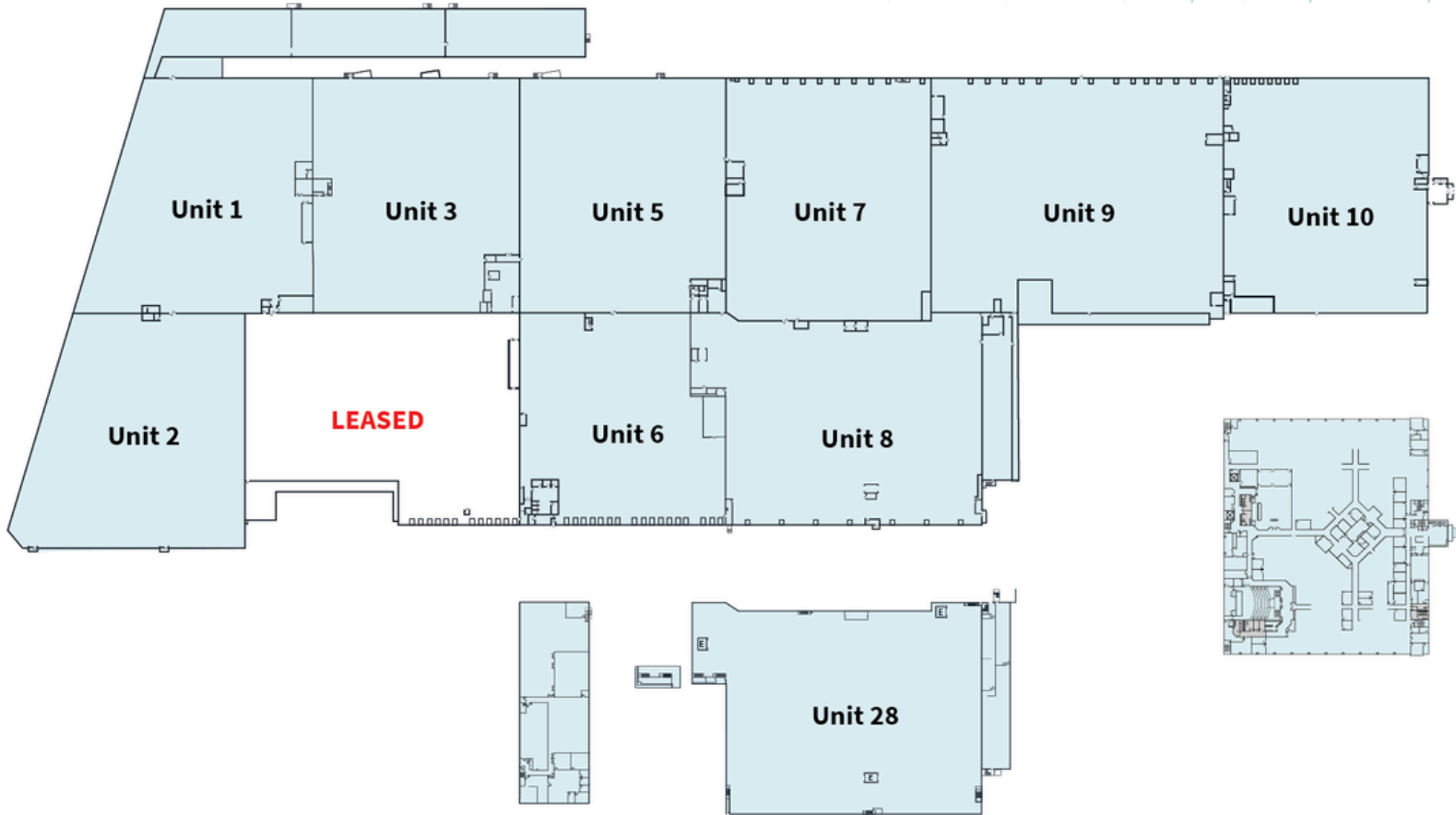


Mitch Russell
+1 610 249 2274
mitch.russell@jll.com

Kyle Lockard
+1 610 249 2279
kyle.lockard@jll.com

Larry Maister
+1 610 249 2297
larry.maister@jll.com

Floor Plan



Mitch Russell
+1 610 249 2274
mitch.russell@jll.com

Kyle Lockard
+1 610 249 2279
kyle.lockard@jll.com

Larry Maister
+1 610 249 2297
larry.maister@jll.com