



Build-to-suit
Up to 40,000 SF



Build-to-suit Available

10,000 - 40,000 SF
available for build-to-suit
in Grimes, Iowa

± 10,000 - 40,000 SF

4405 SE Beisser Dr.
Grimes, Iowa 50111

Property specifications

- Square footage: ± 10,000 - 40,000
- Site size: ± 5 acres
- Build-to-suit opportunity
- Zoning: Heavy Industrial
- Outdoor storage is allowed
- Quick access to the Interstate

Contact broker for
additional information

jll.com/des-moines
Jones Lang LaSalle Brokerage, Inc.

Marcus R. Pitts, CCIM, SIOR
Senior Managing Director
+1 515 556 4727
marcus.pitts@jll.com

Austin Hedstrom, SIOR
Executive Vice President
+1 515 414 1767
austin.hedstrom@jll.com

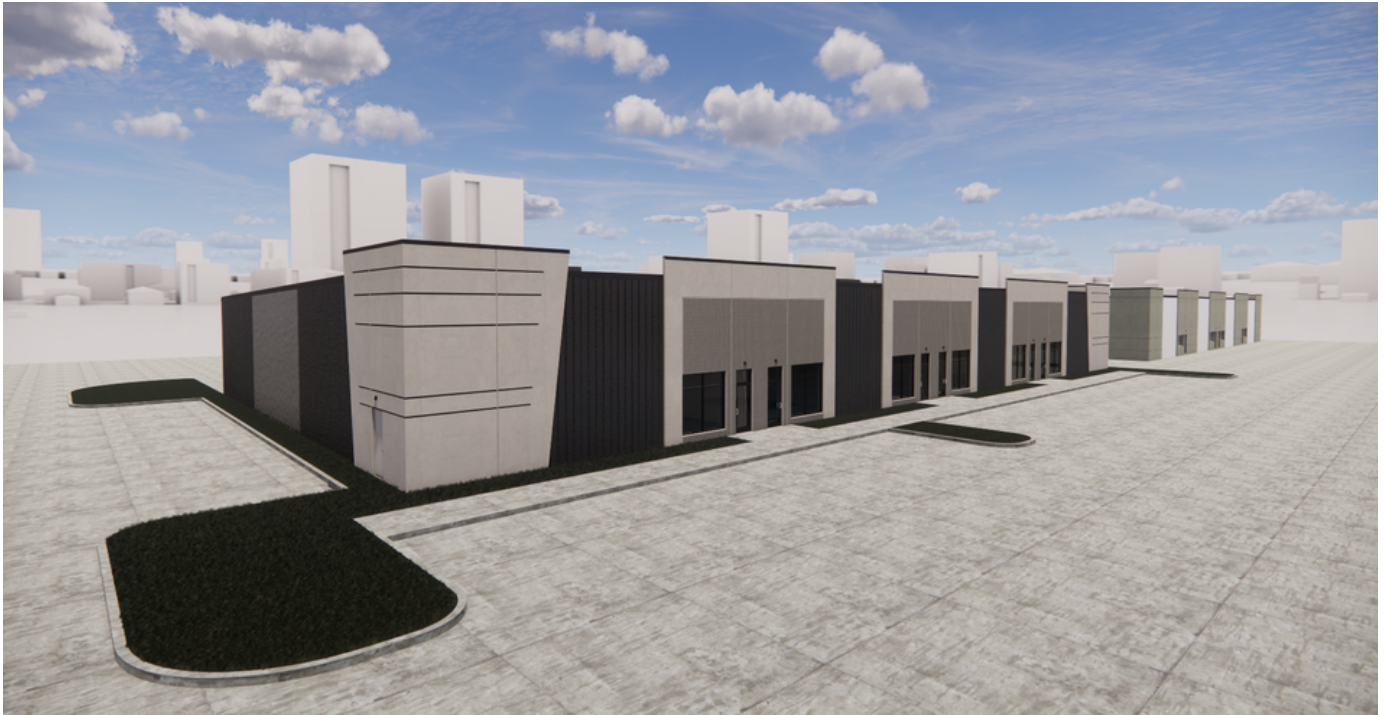
Tanner Hedstrom
Vice President
+1 515 745 2734
tanner.hedstrom@jll.com



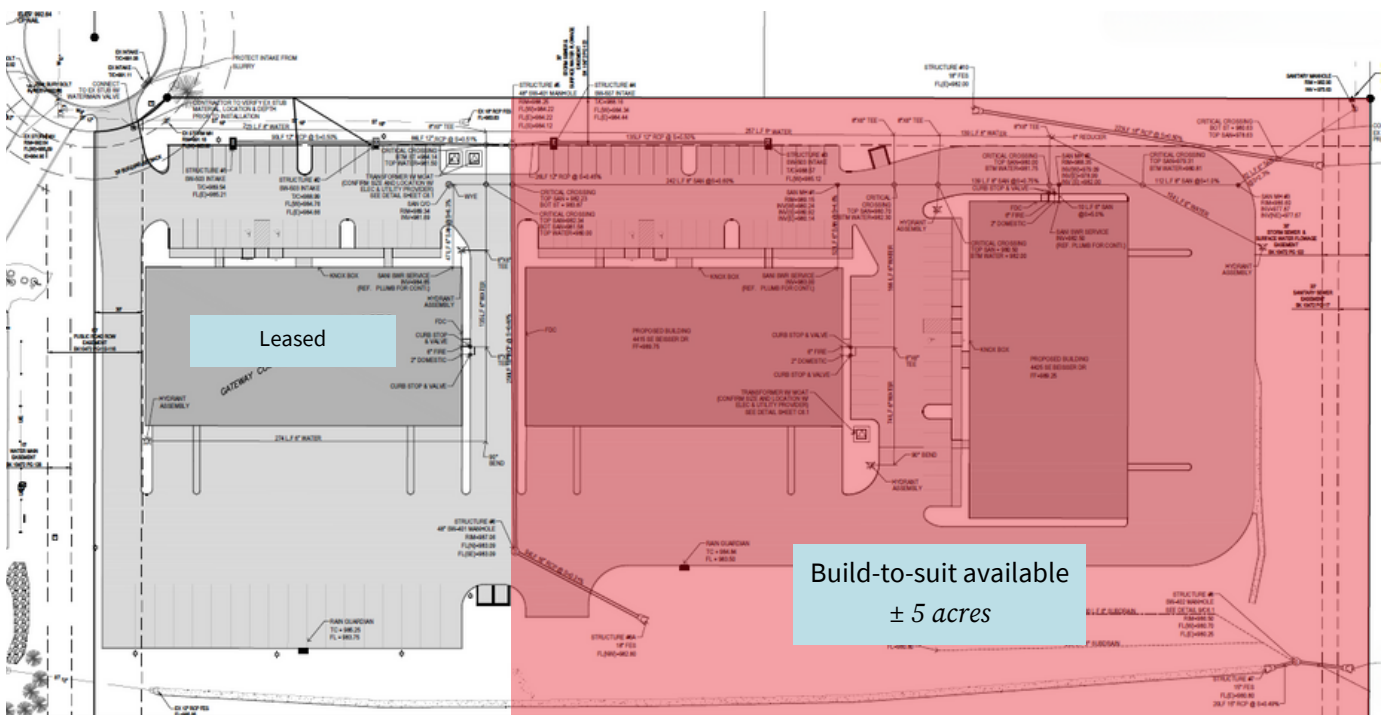
Conceptual site plans

For marketing purposes only.

Conceptual rendering



Proposed site plan | 3 buildings



Land available for build-to-suit

4405 SE Beisser Dr. | Grimes, Iowa 50111

± 10,000 - 40,000 SF

- Excellent location in Grimes
- Quick interstate access
- Outdoor storage available



Marcus R. Pitts, CCIM, SIOR
marcus.pitts@jll.com

Austin Hedstrom, SIOR
austin.hedstrom@jll.com

Tanner Hedstrom
tanner.hedstrom@jll.com

jll.com/des-moines

Although information has been obtained from sources deemed reliable, neither Owner nor JLL makes any guarantees, warranties or representations, express or implied, as to the completeness or accuracy as to the information contained herein. © 2024 Jones Lang LaSalle IP, Inc. All rights reserved.

