

860,000 SF
INDUSTRIAL CAMPUS
hollandtechcenter.com



701 S WAVERLY HOLLAND, MICHIGAN



PROPERTY OVERVIEW

- 14,000-amp, 3-phase power with KVA redundant power supply and UPS systems
- On-site fiber MU feed, 'LightSpan'
- Monitoring wet sprinkler system
- 1,900 paved parking spaces
- 4 points of ingress and egress to the campus
- On-site management
- Campus setting
- Join the already impressive group of tenants including GSHP, HG Medical, JR Technology (a Hitachi company), Kion Group, and E2open

SPACE FEATURES

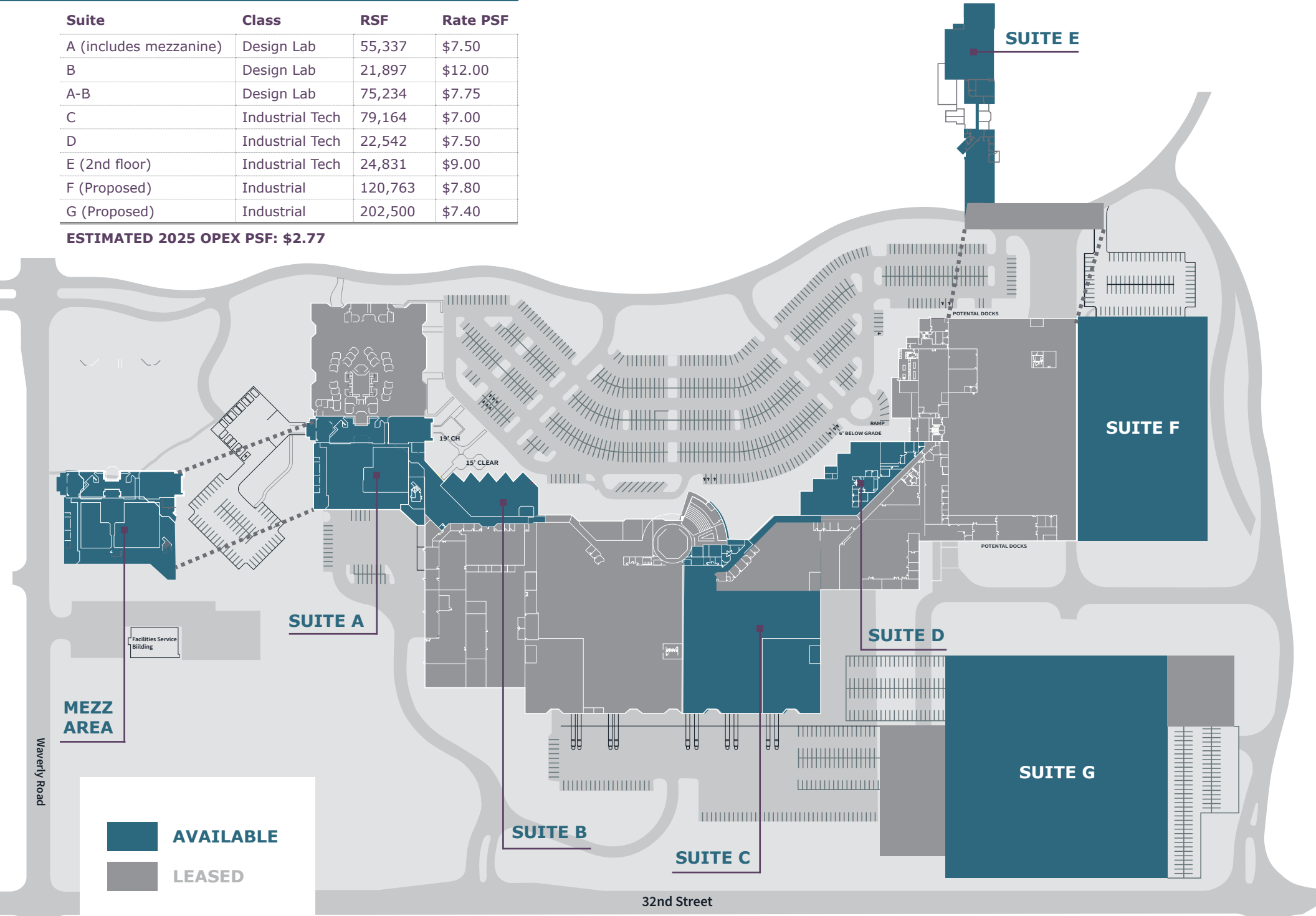
- Mix of offices, design labs, and industrial space
- 14'-24' ceilings
- Industrial space, 100% temperature and humidity controlled
- Parking ratio of 2.5/1,000 SF



FLOOR PLAN

Suite	Class	RSF	Rate PSF
A (includes mezzanine)	Design Lab	55,337	\$7.50
B	Design Lab	21,897	\$12.00
A-B	Design Lab	75,234	\$7.75
C	Industrial Tech	79,164	\$7.00
D	Industrial Tech	22,542	\$7.50
E (2nd floor)	Industrial Tech	24,831	\$9.00
F (Proposed)	Industrial	120,763	\$7.80
G (Proposed)	Industrial	202,500	\$7.40

ESTIMATED 2025 OPEX PSF: \$2.77

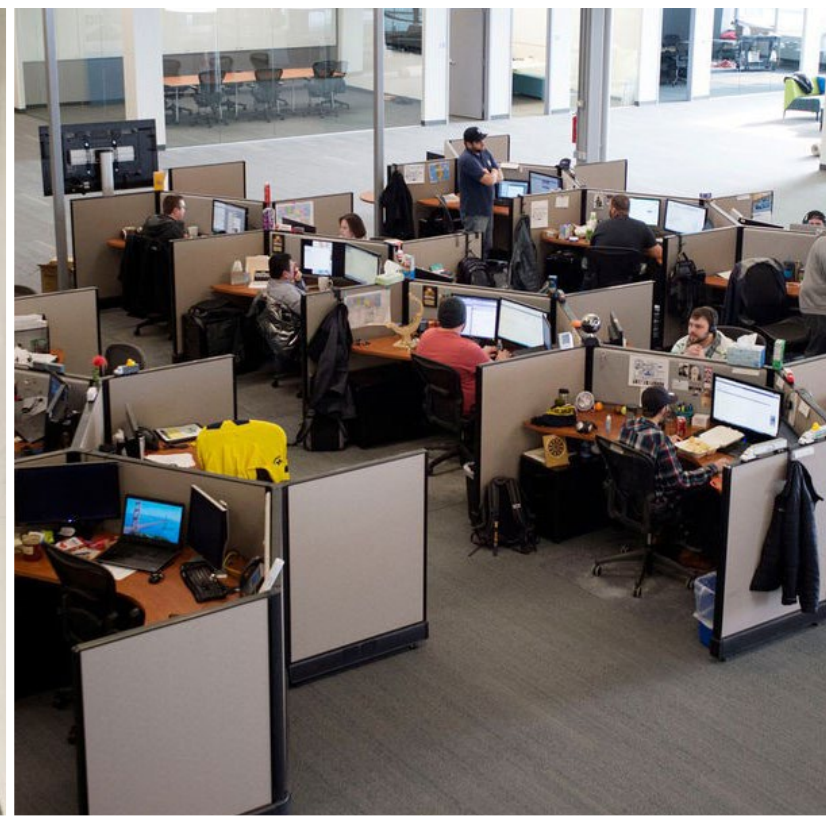
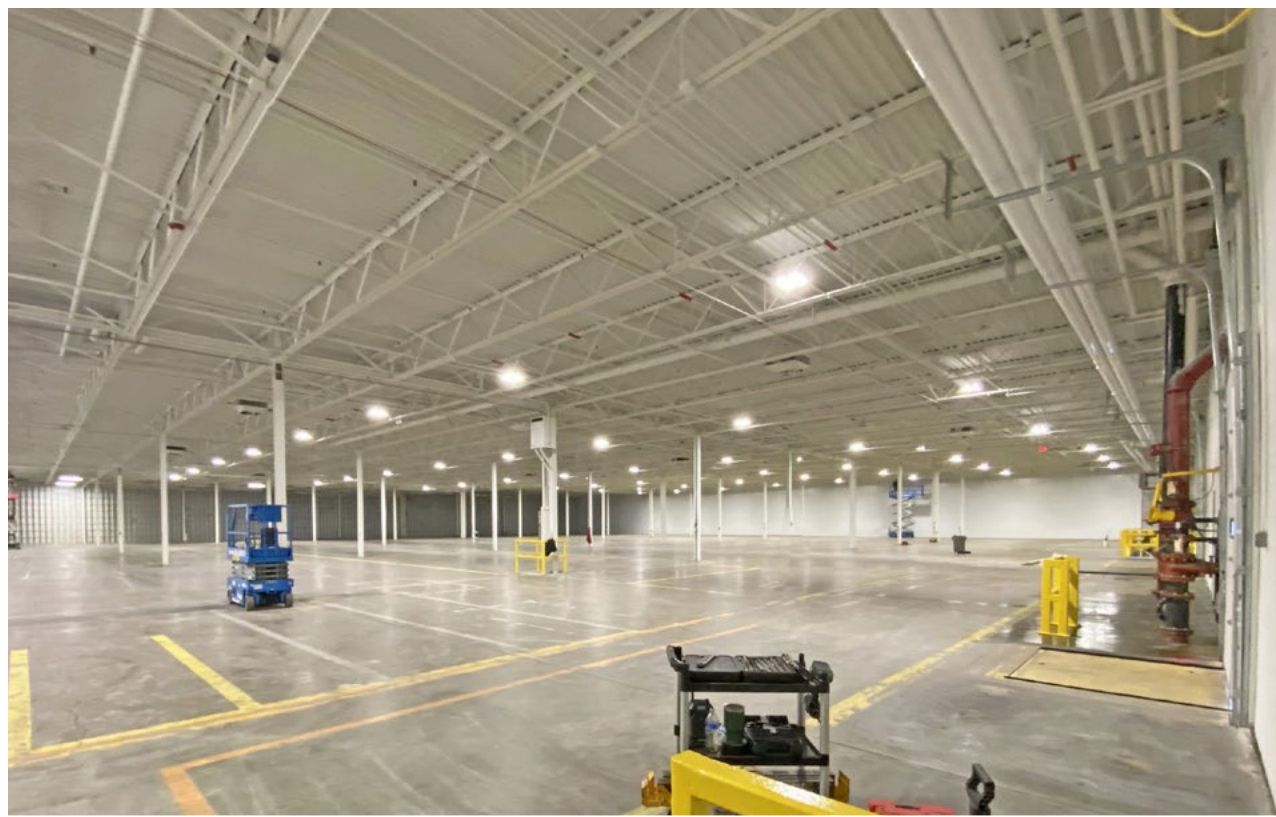


AERIAL



CORPORATE & MANUFACTURING LOCATIONS WITHIN MINUTES OF HOLLAND TECH CENTER







HOLLAND
TECH CENTER

DESIGNED TODAY. READY FOR TOMORROW.

For more information, contact:

Bob Horn, SIOR
Executive Vice President
+1 616 649 3533
bob.horn@jll.com

Chip Hurley, SIOR, CCIM
Senior Vice President
+1 616 304 5410
chip.hurley@jll.com

Jaden Mabin
Associate
+1 269 329 9736
jaden.mabin@jll.com



Although information has been obtained from sources deemed reliable, JLL does not make any guarantees, warranties or representations, express or implied, as to the completeness or accuracy as to the information contained herein. Any projections, opinions, assumptions or estimates used are for example only. There may be differences between projected and actual results, and those differences may be material. JLL does not accept any liability for any loss or damage suffered by any party resulting from reliance on this information. If the recipient of this information has signed a confidentiality agreement with JLL regarding this matter, this information is subject to the terms of that agreement. ©2025 Jones Lang LaSalle Brokerage, Inc. All rights reserved.