



 **JLL** SEE A BRIGHTER WAY

# Point 6

For Lease

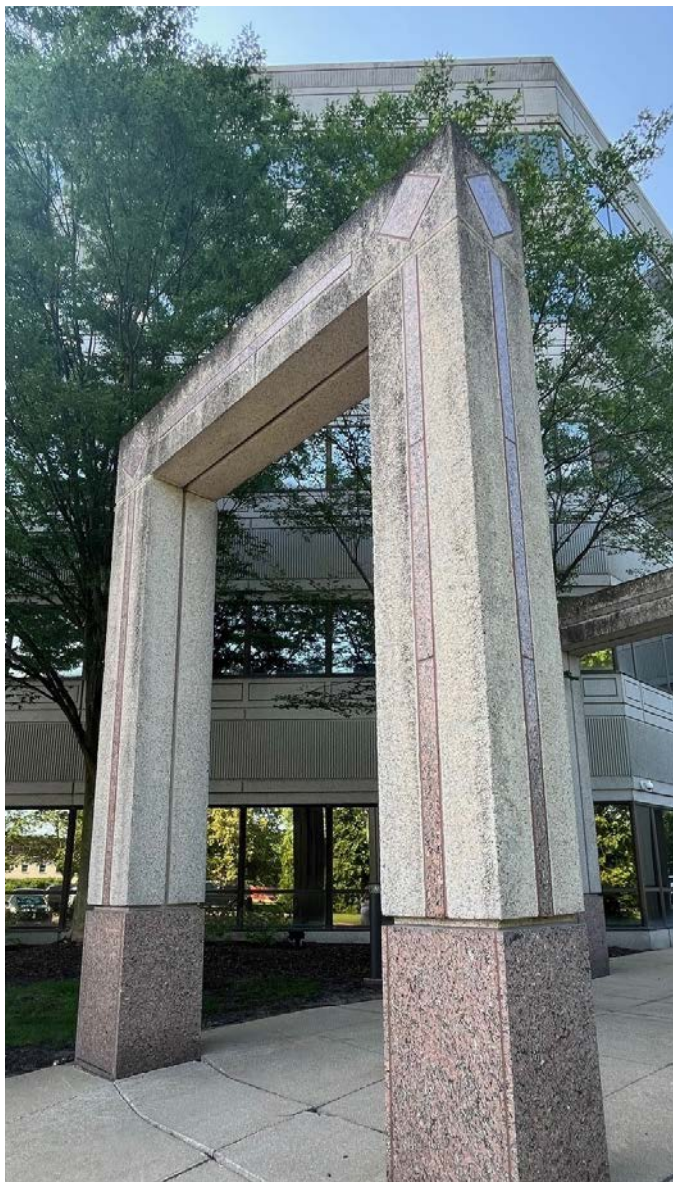
24651 Center Ridge Rd / Westlake, Ohio

[jll.com](https://jll.com)



## Point 6

### Prime Five-Story Office Space in Westlake, Ohio



Strategically positioned with exceptional access to I-90 and I-480, this five-story office building delivers the ideal workspace in Westlake's premier business district. Enjoy the perfect blend of convenience, visibility, and professional environment in this optimally located property.

#### Property Highlights

- Office spaces ranging from 1,500 - 20,000 SF
- 93,028 SF Total Building Size
- Rental Rate: \$18.50 per SF
- Free surface parking
- Located within close proximity to Columbia and Clague Road with access to I-90 and I-480.
- Multiple amenities in the area including; restaurants, retailers, childcare, auto services and much more.
- RTA Bus line located within walking distance of the building.

# 4.6

Miles to  
Crocker Park

# 6.4

Miles to Cleveland Hopkins  
International Airport

# 16.2

Miles to Downtown  
Cleveland

## First Floor



### Available Suites

- Suite 100 - 6,396 SF

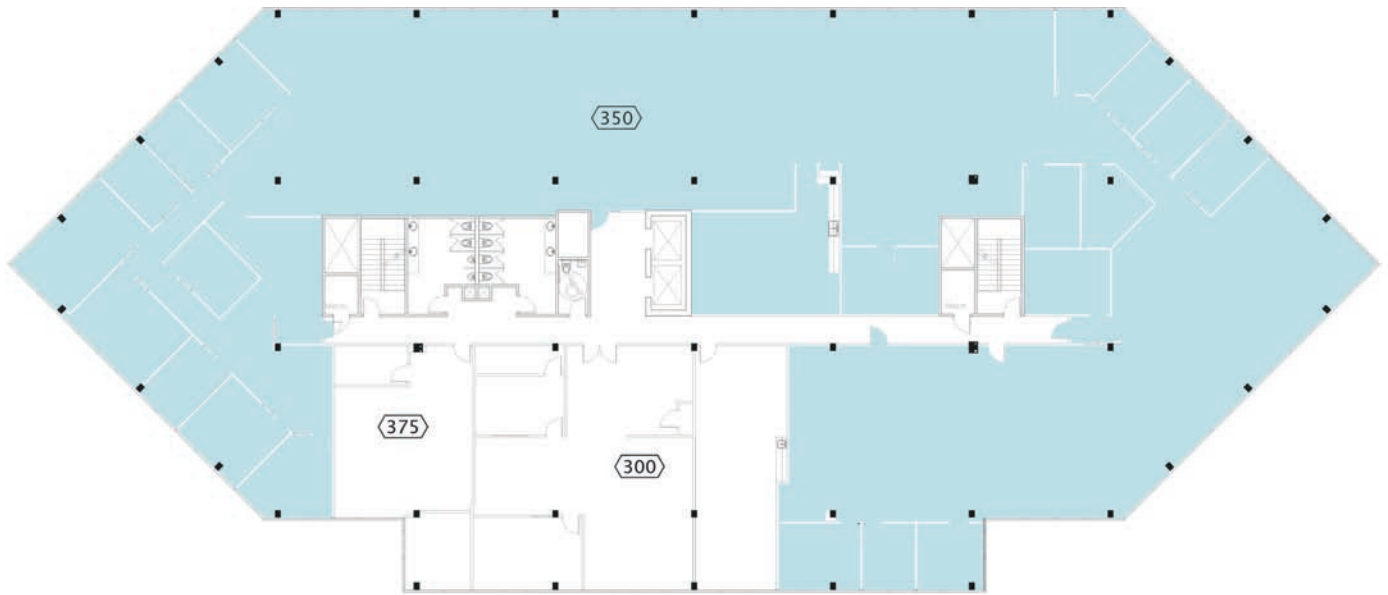
## Second Floor



### Available Suites

- Suite 200 - 8,686 SF
- Suite 225 - 1,643 SF

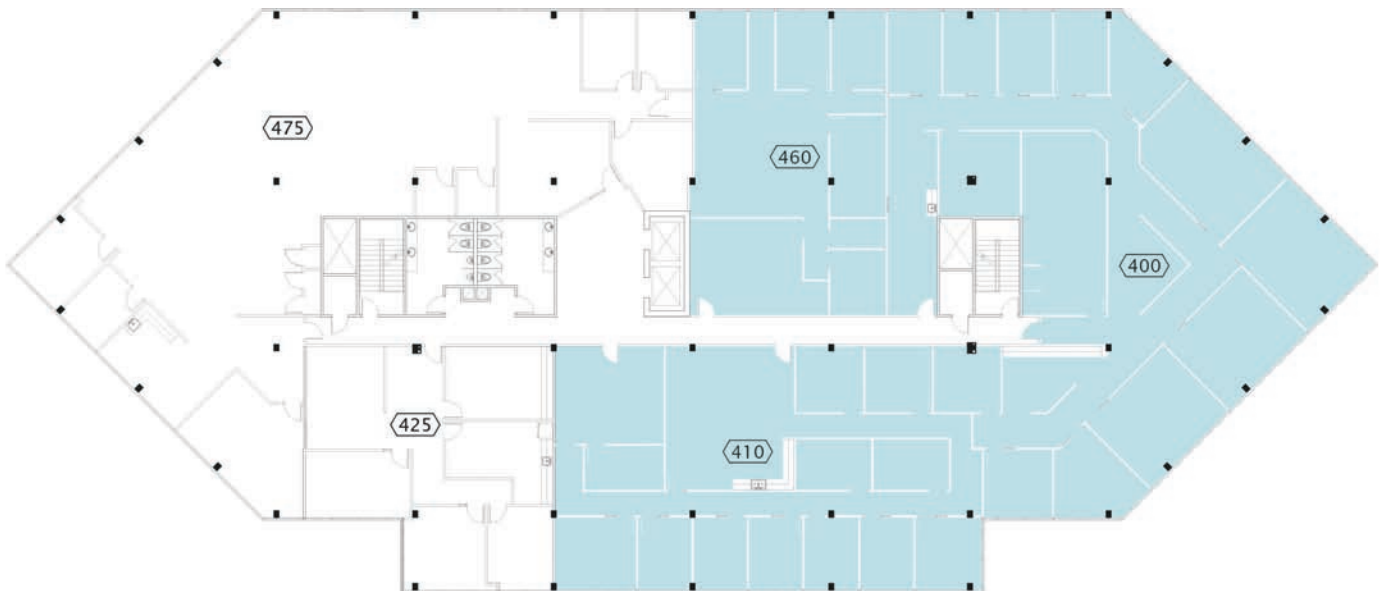
## Third Floor



### Available Suites

- Suite 350 - 15,932 SF

## Fourth Floor

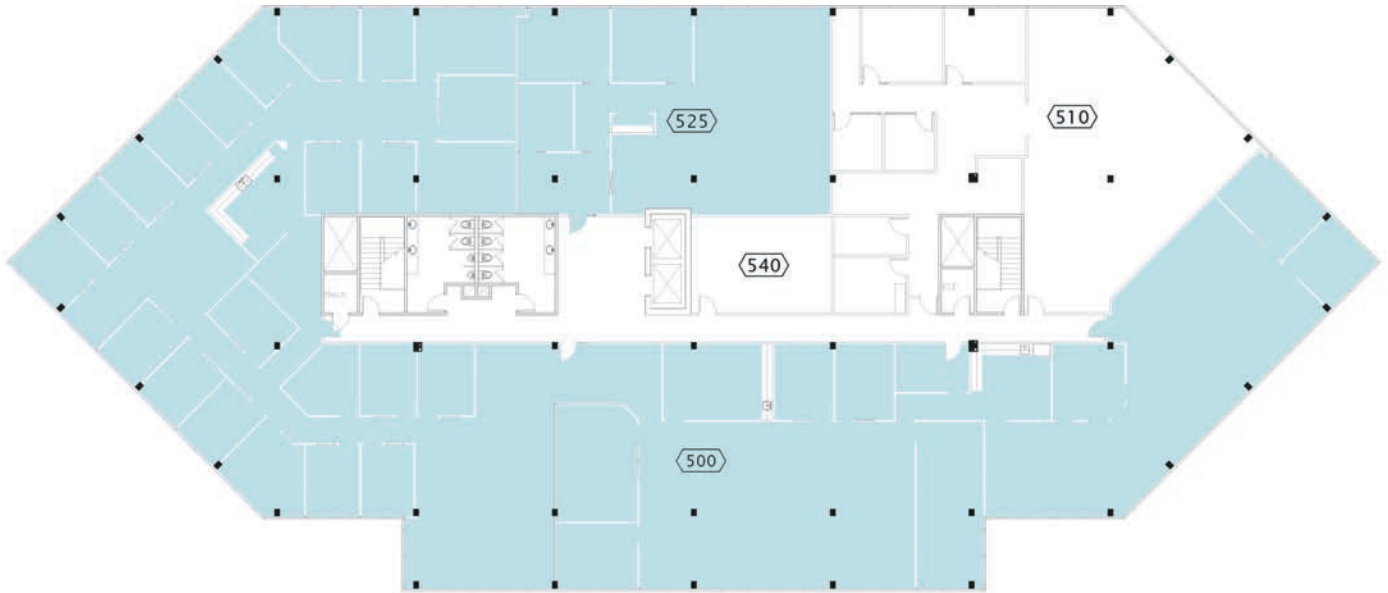


### Available Suites

- Suite 400 - 5,813 SF
- Suite 410 - 3,697 SF
- Suite 460 - 2,167 SF



## Fifth Floor



### Available Suites

- Suite 500 - 13,255 SF
- Suite 525 - 2,363 SF



# Location Map



JLL

**Daniel Rose**

*Vice President*

daniel.rose@jll.com

+1 (216) 912 4510