

THE TOWN CENTER COLLECTION

Everything you need, right where you want to be.



7301 - 7575 East 29th Avenue | Denver, Colorado



*Welcome to 29th Avenue Town Center,
Central Park's social epicenter.*



Prime retail & office
space available now
for lease



Located in the
Central Park
neighborhood



2nd generation
restaurant space
with patio available



Quick, easy access
to I-70 & I-270



Excellent area
demographics



Denver's premier
master-planned
community

East 29th Avenue is home to the Town Center's shops, restaurants and services. Where people gather in the summertime for free concerts, movies under the stars and a weekly Farmers Market. Here, Central Park's rich diversity in both architecture and lifestyle are showcased beautifully, and the Denver community comes to life.





Quebec St



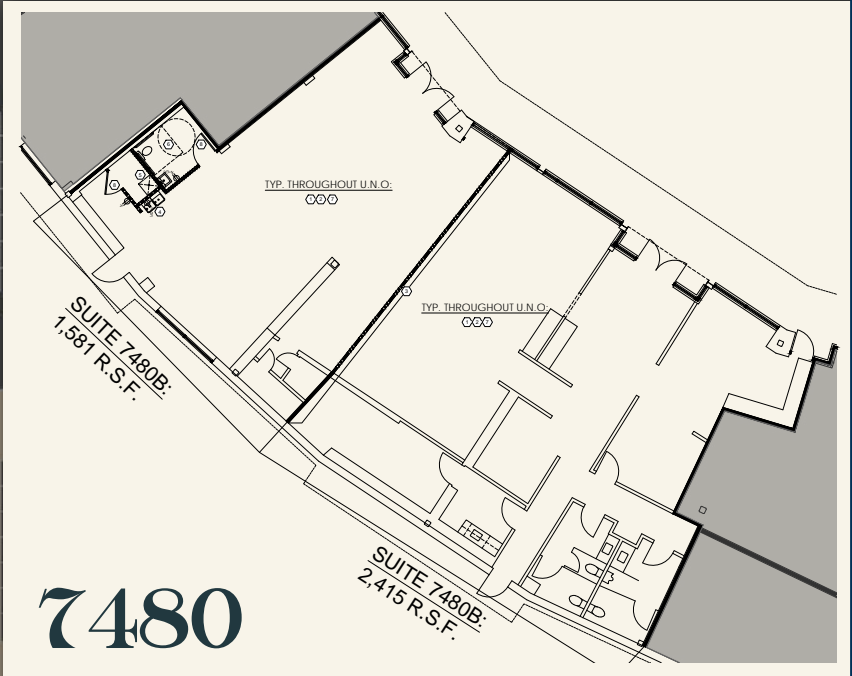
7357
Former Etai's -
2nd Generation
Restaurant Space
Available 1/1/26

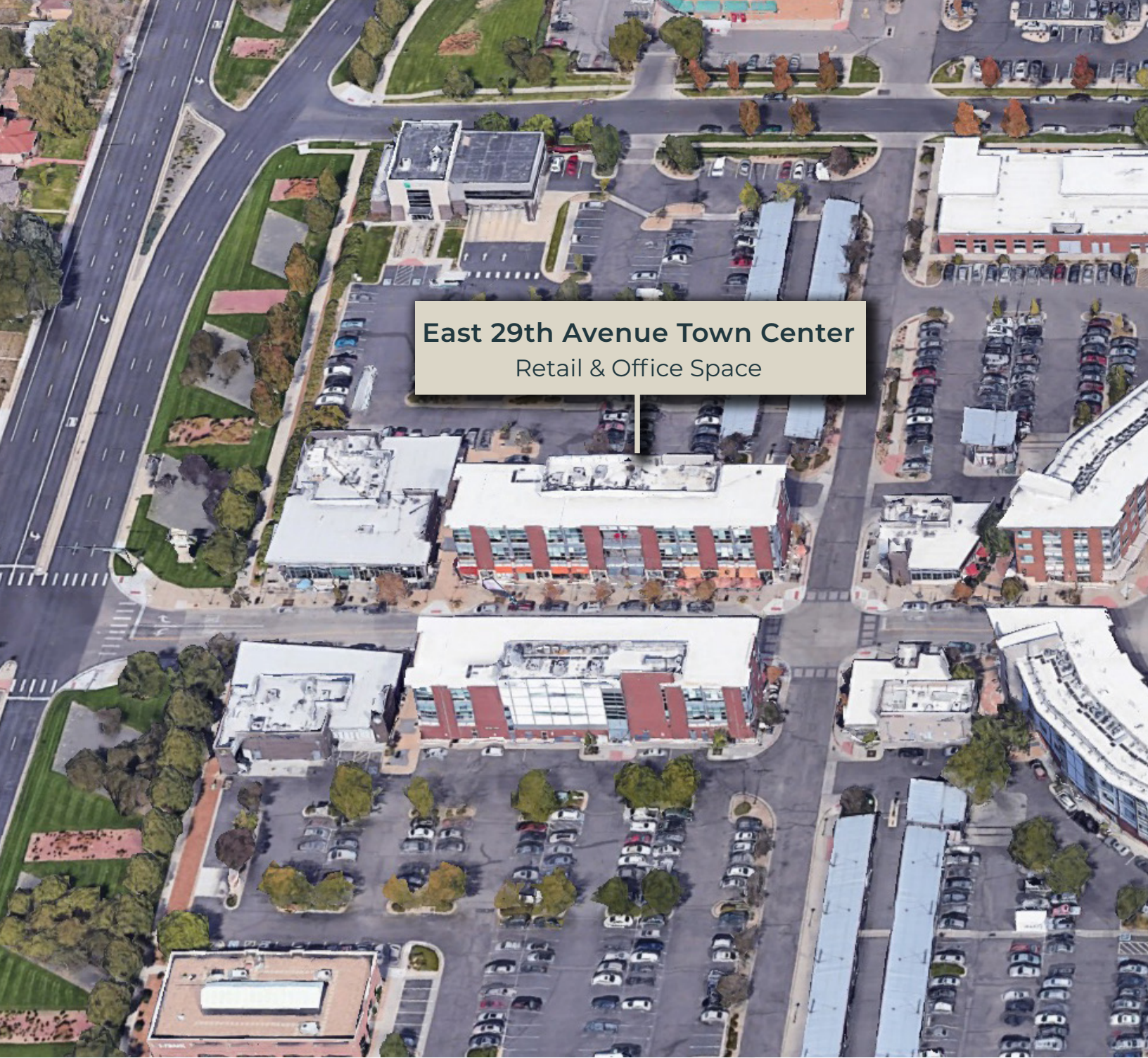
ROSSO POMO DORO
dry bar
FOUNDERS GREEN ANIMAL HOSPITAL
pure barre

Premium Retail Space

7357 **2,600 sf**
2nd gen restaurant with
wrap-around patio
Available 1/1/26

7480 **1,581 - 4,158 sf**
Street-level retail at
Crescent Town Center





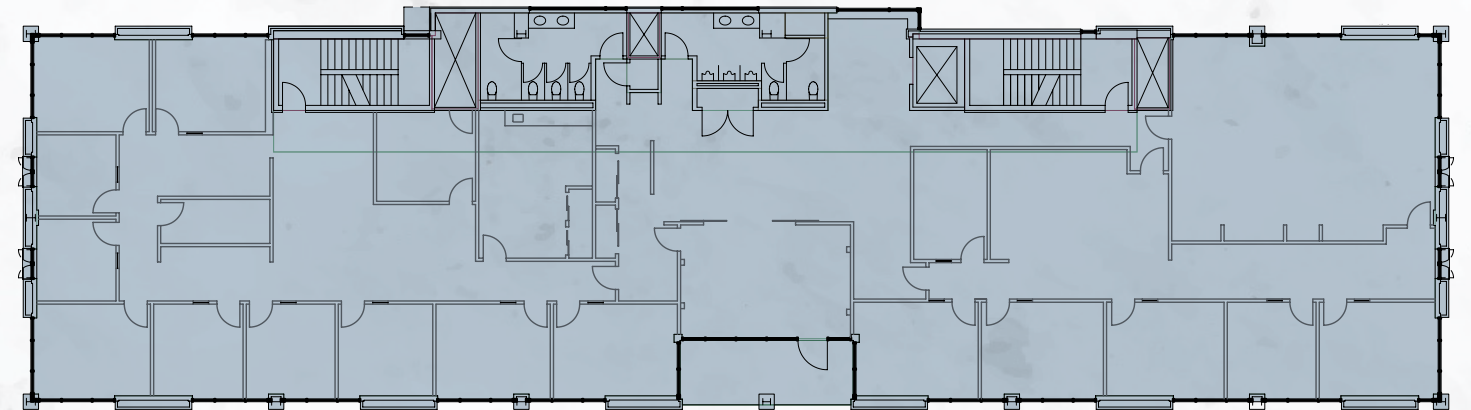
East 29th Avenue Town Center
Retail & Office Space



Class A Office Space Available

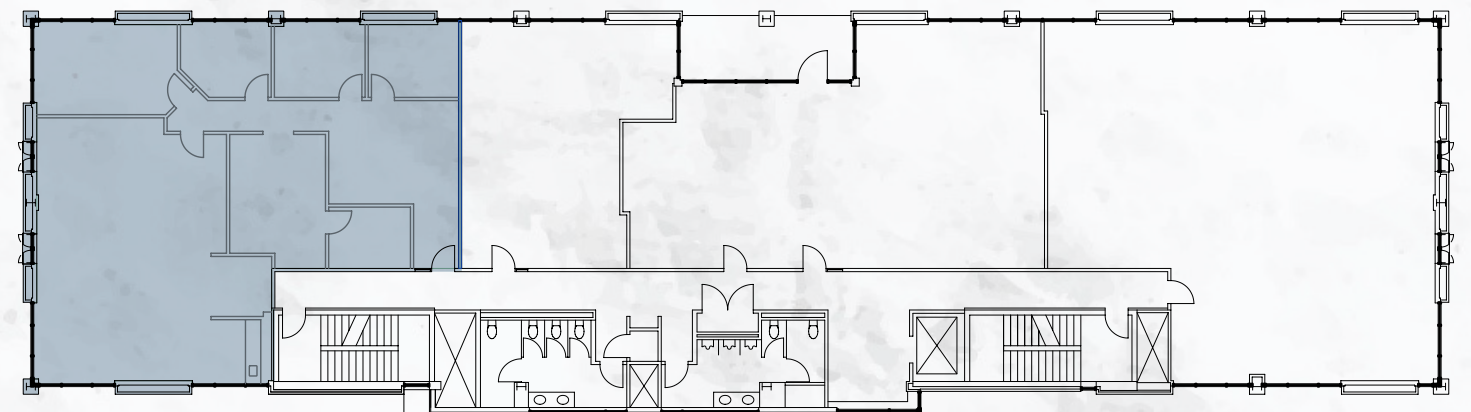
7341-7357

Entire 2nd floor: 8,849 sf available



7350

Suite 200: 2,888 sf available





NORTHFIELD SHOPS

Target, Ulta, Harkins, Five Guys, Tokyo Joe's, Macy's, Torchy's Tacos

RUNWAY 35 SOUTH

Arby's, Wendy's, QT, Super Star Car Wash

RUNWAY 35 NORTH

SCL Health, PNC, In-N-Out, Cane's

ENTERPRISE BUSINESS CENTER

Starbucks, F45, Chiba Hut

QUEBEC SQUARE

Walmart, IHOP, PetSmart, Sam's Club, Office Depot, Ross, Panera, McDonald's

A-LINE SQUARE

Sprouts Farmers Market, Chase, The Joint Chiropractic, Club Pilates, Restore

EASTRIDGE TOWN CENTER

King Soopers, Constellation, #HASHTAG, Los Chingones

EAST 29TH AVENUE TOWN CENTER

King Soopers, Pure Barre, Orangetheory, Walgreens, Corepower Yoga, Chipotle

STANLEY, **ROSENBERG'S**, **BASE COAT**, **CHOOK**, **MARIA EMPANADA**

Demographics				
	1 MILE	3 MILES	5 MILES	
Current Population	21,762	147,703	443,427	
Total Households	8,705	57,508	191,795	
Daytime Population	19,622	154,748	533,477	
Avg Household Income	\$162,950	\$135,582	\$116,927	



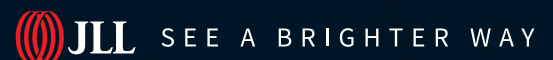
Retail leasing contact information

Sam Zaitz
303-931-1201
sam.zaitz@jll.com

Lorenzo Harris
720-431-9122
lorenzo.harris@jll.com

Office leasing contact information

Victoria Blackstock
303-981-2536
victoria.blackstock@jll.com



Although information has been obtained from sources deemed reliable, neither Owner nor JLL makes any guarantees, warranties or representations, express or implied, as to the completeness or accuracy as to the information contained herein. Any projections, opinions, assumptions or estimates used are for example only. There may be differences between projected and actual results, and those differences may be material. The Property may be withdrawn without notice. Neither Owner nor JLL accepts any liability for any loss or damage suffered by any party resulting from reliance on this information. If the recipient of this information has signed a confidentiality agreement regarding this matter, this information is subject to the terms of that agreement. © 2023 Jones Lang LaSalle IP, Inc. All rights reserved.