

# Available For Lease

103 Chesapeake Park Plaza, Middle River, MD 21220



***45,000 SF Flex/Industrial  
3+/- Acres of Outside Storage  
Fully Fenced and Secured***



**Ben Meisels**  
Exec Managing Director  
443.451.2614  
[ben.meisels@jll.com](mailto:ben.meisels@jll.com)

**Ryan Burrows**  
Senior Vice President  
443.452.1514  
[ryan.burrows@jll.com](mailto:ryan.burrows@jll.com)

**Rob Maddux**  
Senior Vice President  
443.931.3353  
[rob.maddux@jll.com](mailto:rob.maddux@jll.com)



VLS  
**LEASED**  
Leasing

*Program  
Building*

*Lab  
Building*

Chesapeake Park Plaza



Image Landsat / Copernicus

**Property  
Overview**

## Industrial and Office Opportunities featuring:

### VLS Building

- 113,000 SF
- 45-60' clear
- Dock & Drive-in loading
- Heavy utilities & an abundance of cranes

**LEASED**



### Lab Building

- 45,000 SF
- 18' clear
- Dock & Drive-in loading
- Conditioned



### Program Building

- 49,000 SF multi-story office
- Operation support facility





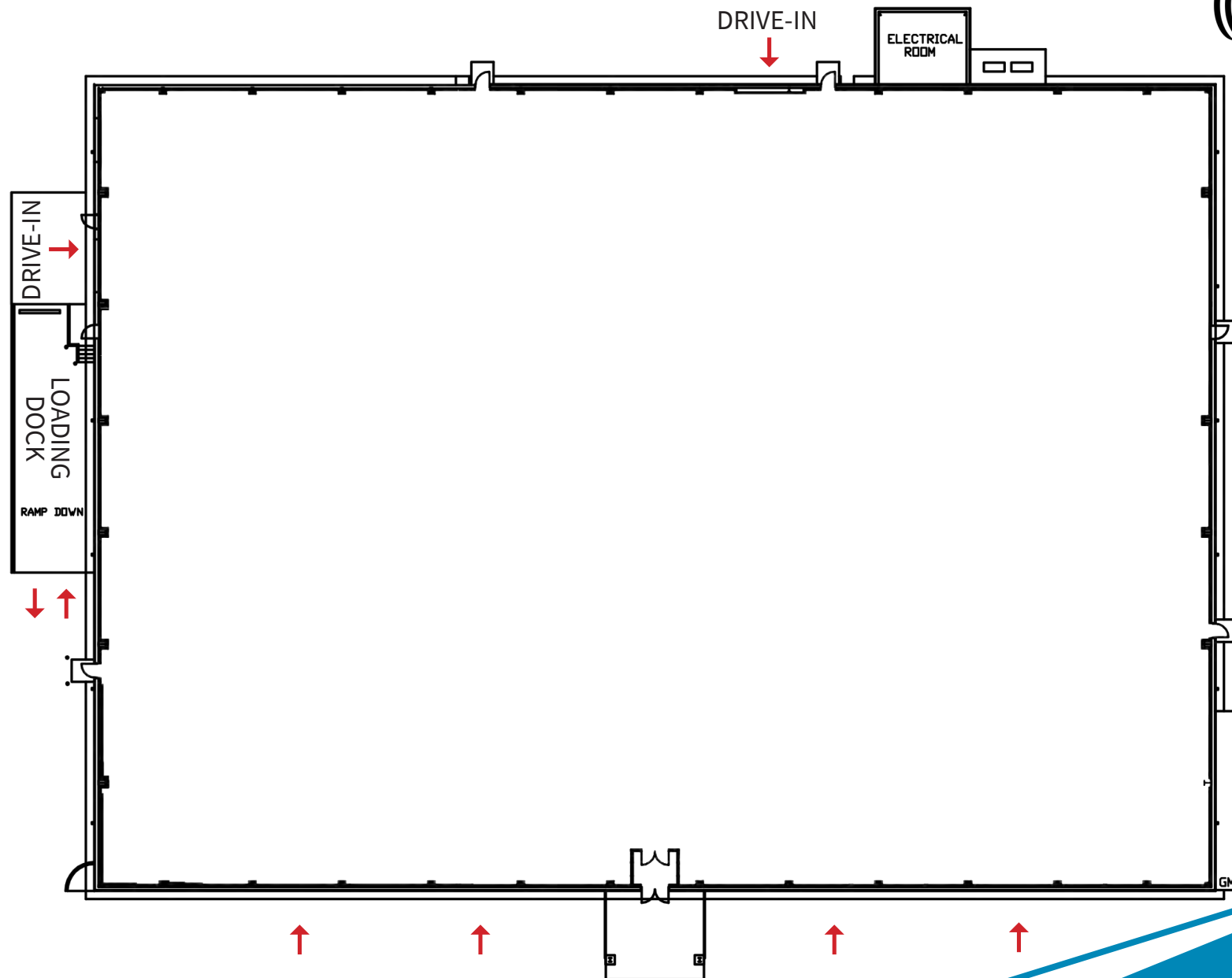
# Lab Building Highlights:

**45,761 SF Industrial Building:**

## Featuring:

- *45,000 SF (divisible to 23,000 SF)*
- *Stand-alone building*
- *Fully fenced, lit and secured*
- *18' clear*
- *Fully conditioned*
- *1 dock, 2 drive-ins (ability to add more)*
- *Heavy utilities*
- *Abundant parking & outside storage*





↑↑ POTENTIAL NEW LOADING DOORS

**Floor Plan**  
**Lab Building**

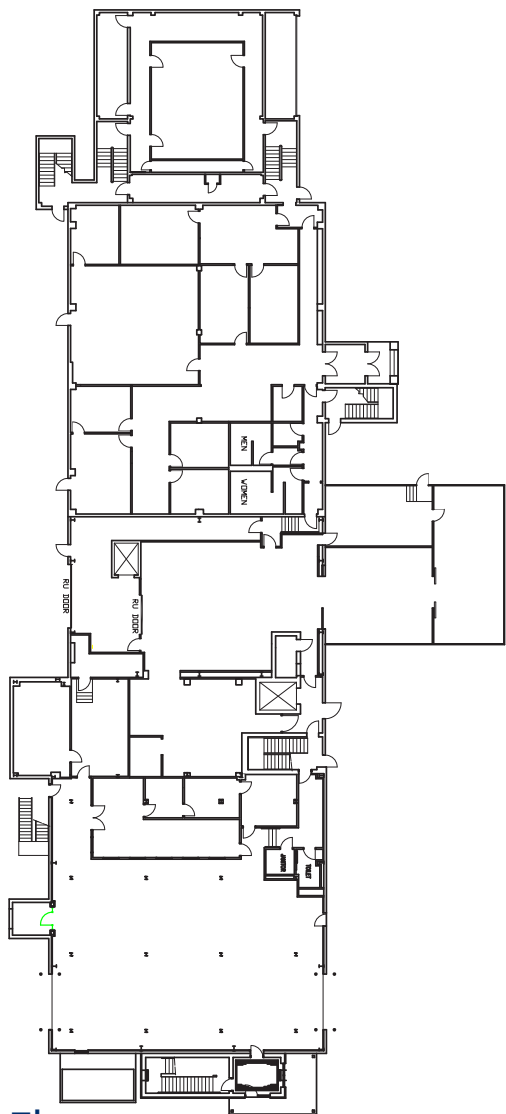
# Program Building Highlights:

## 49,000 SF Office Building:

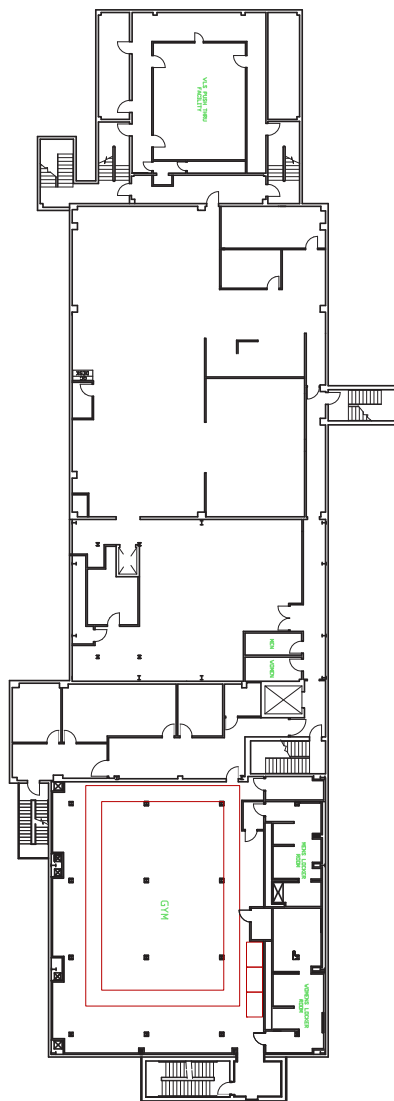
### Featuring:

- *49,000 SF multi-story office*
- *Ideal for support office, shipping & receiving*
- *Heavy utilities*
- *Can be demolished for additional outside storage / parking*

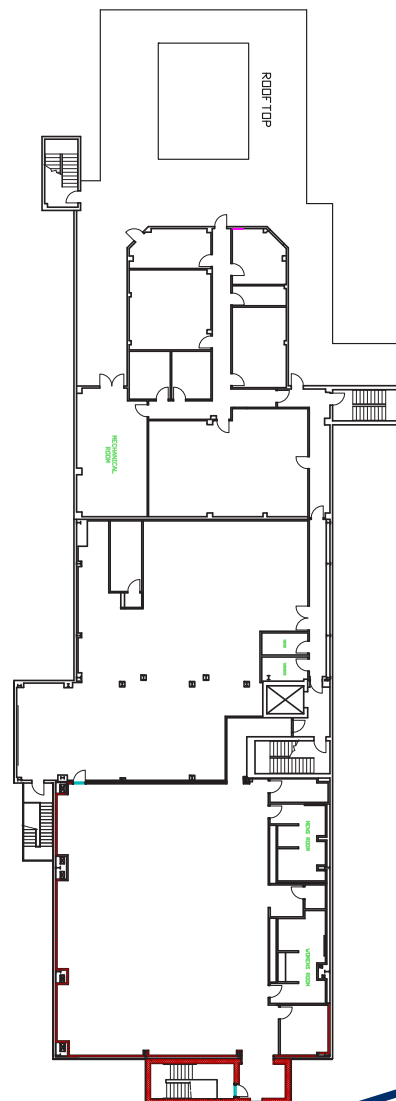




1st Floor



2nd Floor



3rd Floor



5 miles to 695  
7 miles to I-95



LOCKHEED MARTIN  
Lab Building



LOCKHEED MARTIN  
Program Building

Rail Spur

MARYLAND  
150

LOCKHEED MARTIN  
VLS Building



Local Access





103 Chesapeake Park Plaza  
Middle River, MD

Middle River

Baltimore

Hart Miller  
Island



**For more information, please contact:**

**Ben Meisels**  
Exec Managing Director  
443.451.2614  
[ben.meisels@jll.com](mailto:ben.meisels@jll.com)

**Ryan Burrows**  
Senior Vice President  
443.452.1514  
[ryan.burrows@jll.com](mailto:ryan.burrows@jll.com)

**Rob Maddux**  
Senior Vice President  
443.931.3353  
[rob.maddux@jll.com](mailto:rob.maddux@jll.com)

Although information has been obtained from sources deemed reliable, neither Owner nor JLL makes any guarantees, warranties or representations, express or implied, as to the completeness or accuracy as to the information contained herein. Any projections, opinions, assumptions or estimates used are for example only. There may be differences between projected and actual results, and those differences may be material. The Property may be withdrawn without notice. Neither Owner nor JLL accepts any liability for any loss or damage suffered by any party resulting from reliance on this information. If the recipient of this information has signed a confidentiality agreement regarding this matter, this information is subject to the terms of that agreement. ©2021. Jones Lang LaSalle IP, Inc. All rights reserved.