

# Building 6



1445 BROOKVILLE WAY, INDIANAPOLIS IN 46239



## PARK HIGHLIGHTS

Brookville Business Park is an office/ warehouse center conveniently located off Brookville Road at Shadeland Avenue and I-465. With Shadeland Avenue visibility, the park has easy access to I-465, I-65, I-74 and I-70.



### BUILDING DESCRIPTION

- 115,200 SF building size
- Located in Marion County
- Built in 1989



### BUILDING SYSTEMS

- Wet sprinkler system
- T-5 lighting



### STRUCTURE

- 20' clear height
- 139' building depth
- 40'x40' & 30'x40' column spacing
- 19 dock doors
- 8 drive-in doors
- I-2 zoning

For more information:

[BrookvilleBusinessPark.com](http://BrookvilleBusinessPark.com)

**Brian Buschuk**  
brian.buschuk@jll.com  
+1 317 810 7180

**Brian Seitz, SIOR**  
brian.seitz@jll.com  
+1 317 810 7184

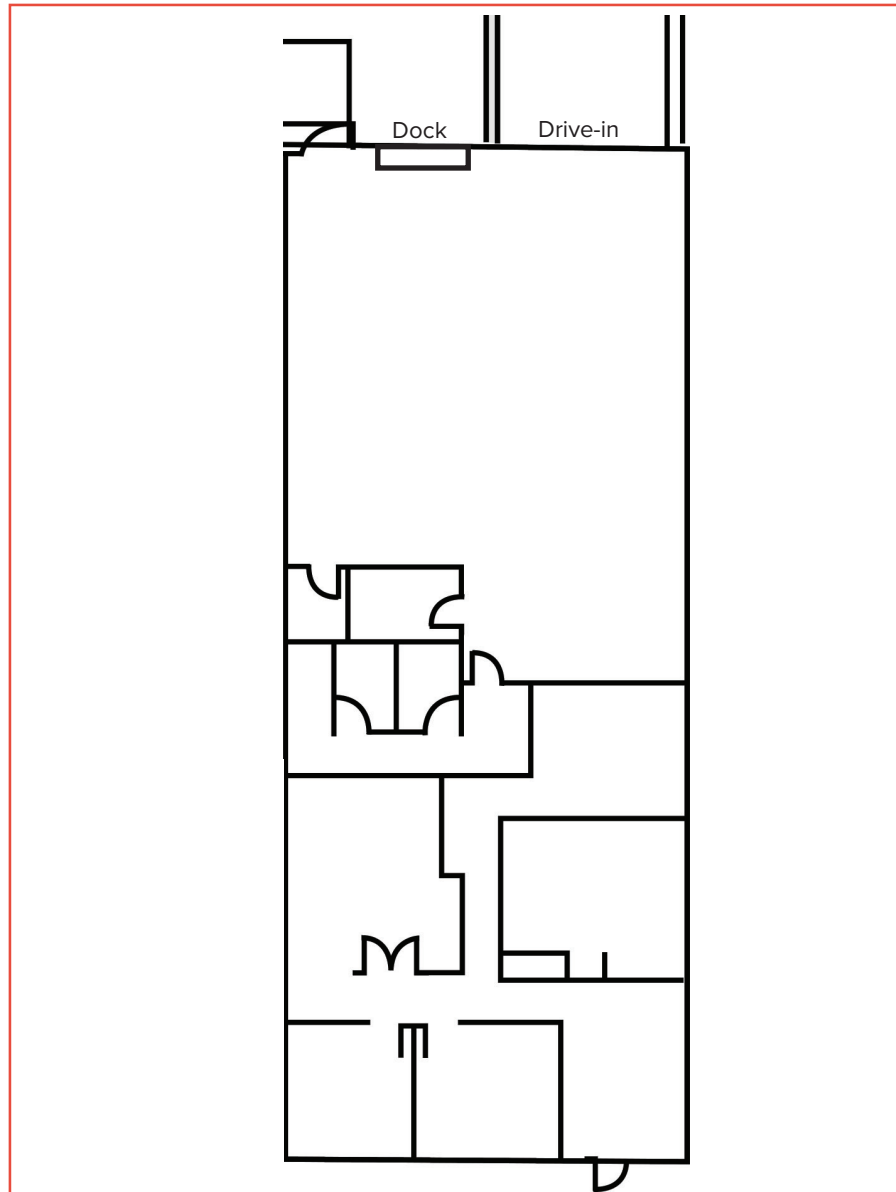
**Sarah Morey**  
sarah.morey@jll.com  
+1 317 810 7139

## BUILDING AVAILABILITY



### 1445 Brookville Way, Suite A

- 4,000 SF total
- ±2,100 SF office
- One (1) dock
- One (1) drive-in
- Available Immediately



For more information:

[BrookvilleBusinessPark.com](https://www.BrookvilleBusinessPark.com)

#### DISCLAIMER

Although information has been obtained from sources deemed reliable, Owner, Jones Lang LaSalle, and/or their representatives, brokers or agents make no guarantees as to the accuracy of the information contained herein, and offer the Property without express or implied warranties of any kind. The Property may be withdrawn without notice. If the recipient of this information has signed a confidentiality agreement regarding this matter, this information is subject to the terms of that agreement. ©2024. Jones Lang LaSalle. All rights reserved.