

# Land for sale

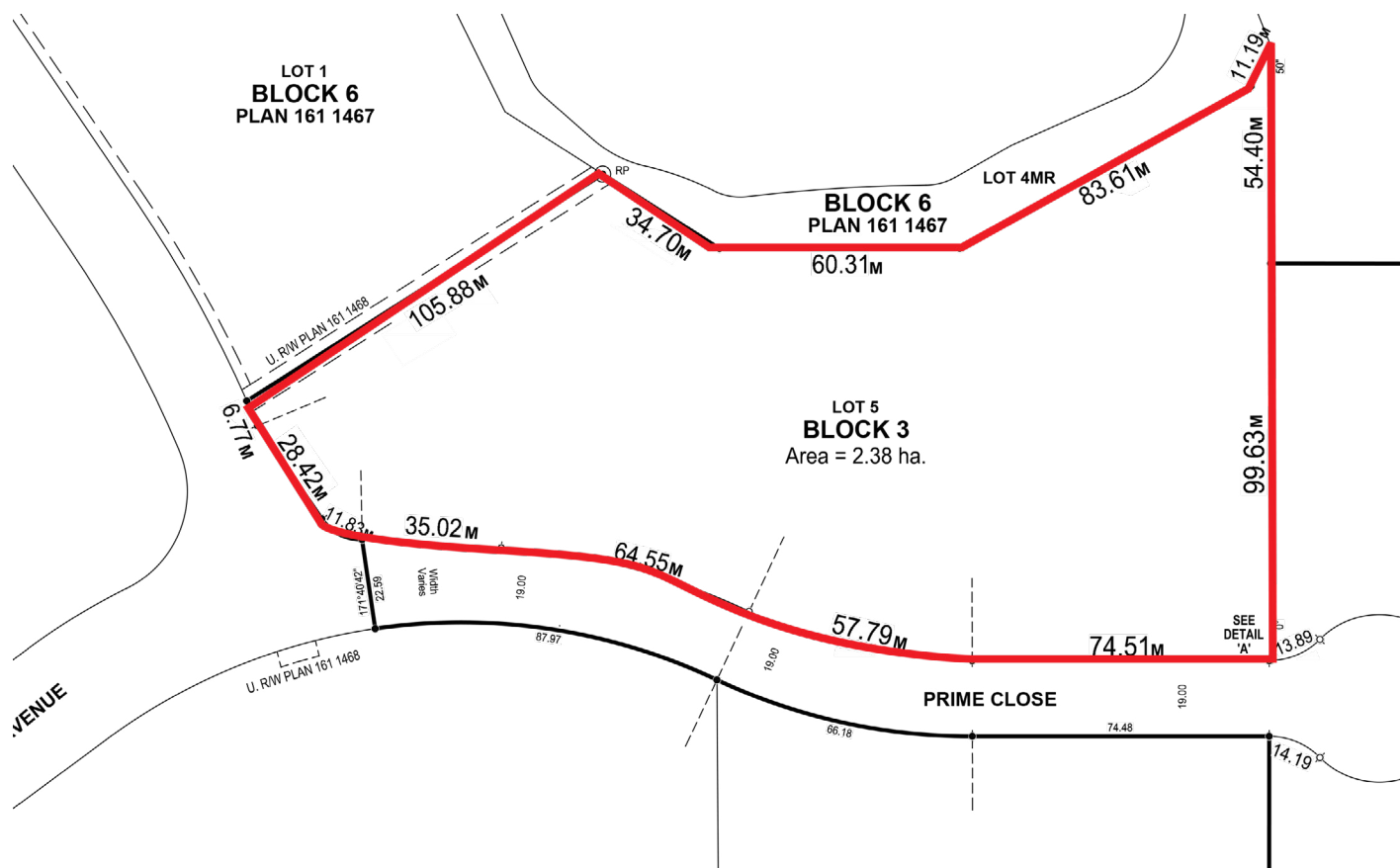
292180 Prime Avenue

Rocky View County, Alberta

5.88 acres



# Site Plan



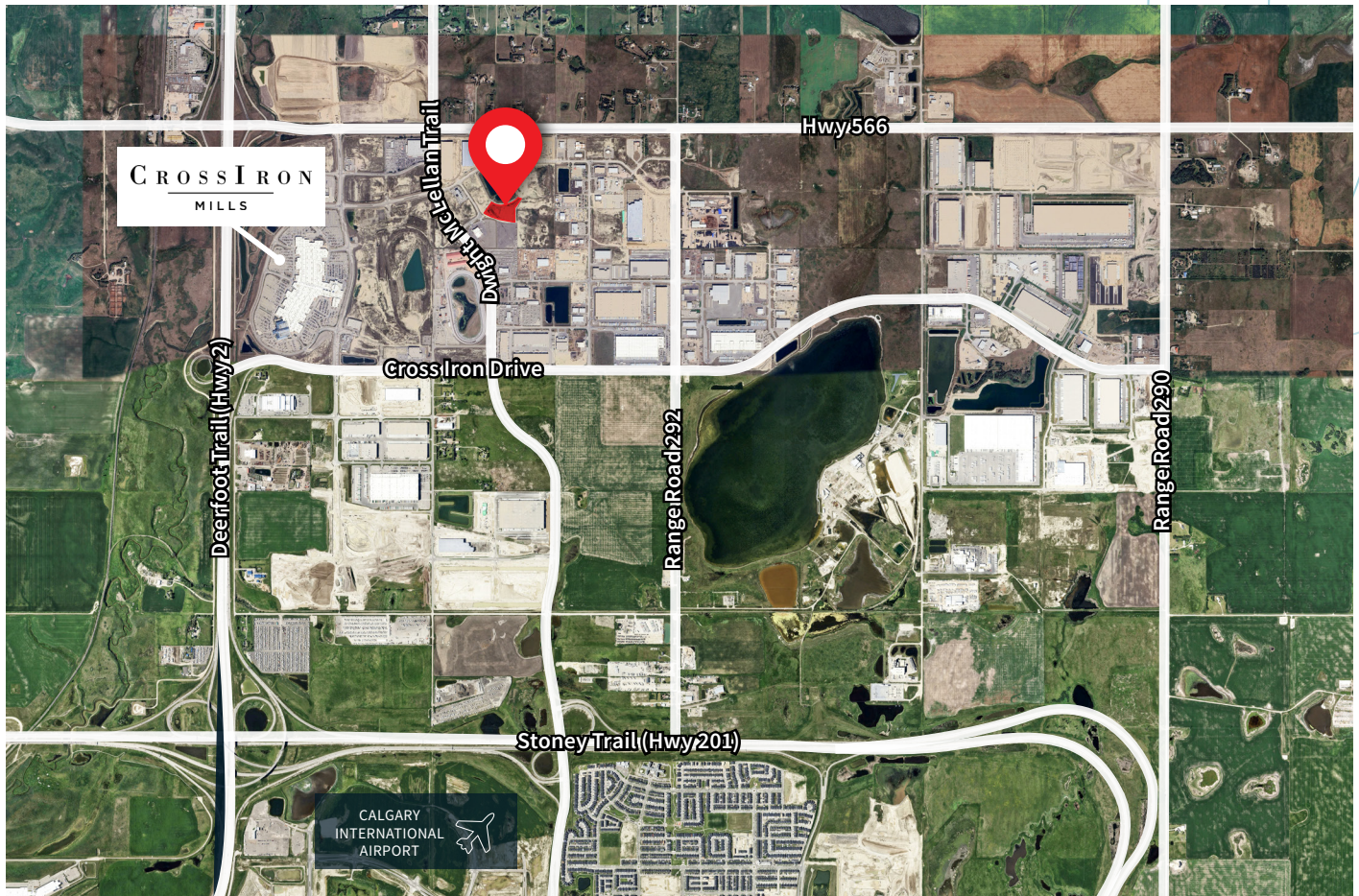
## Details

Size	5.88 acres
Legal	4;29;26;10;NW
Zoning	DC - 99 (Cell C)
Site Condition	Rough Grade
Asking Price	\$750,000 per acre
Available	Immediately

## Property Highlights

- Rare Balzac opportunity
- No building commitment or developer guidelines
- Services to the property line
- Low property tax and no business tax
- Highway 566 fully upgraded and expanded
- Immediate access to major northeast roadways and Calgary International Airport





## Major Roads and Destinations



Deerfoot Trail (QE 2) → **4 min. / 2.2 km**



CrossIron Mills → **3 min. / 1.5 km**



Stoney Trail (Ring Road) → **6 min. / 4.5 km**



Downtown Calgary → **20 min. / 25.5 km**



Tran-Canada Highway → **16 min. / 20.3 km**



Calgary Int. Airport → **12 min. / 13.5 km**

## Contact us for more information



### Ryan Haney

Lead Broker

Executive Vice President  
+1 403 456 2221  
ryan.haney@jll.com

### Carey Koroluk

Lead Broker

Vice President  
+1 403 456 2346  
carey.koroluk@jll.com

### Austin Smith

Lead Broker

Vice President  
+1 403 456 2197  
austin.smith@jll.com

### Marshall Toner

EVP, National Industrial  
+1 403 456 2214  
marshall.toner@jll.com

### Chris Saunders

Executive Vice President  
+1 403 456 2218  
chris.saunders@jll.com

### Troy Robinson

Associate  
+1 403 670 7353  
troy.robinson@jll.com

jll.ca