 **JLL** SEE A BRIGHTER WAY

For Lease

9,000 SF Office Space

1870 Birchmount Rd, Scarborough

Floor Plan



Location:

Birchmount Rd / Highway 401

Size:

9,000 sf

Possession:

July 1, 2025

List Price:

\$16.00 psf net

TMI (2025)*:

\$6.50 psf

*TMI includes all utilities.

Highlights:



Ground floor office space



Well appointed office



Bright and spacious with plenty of windows



Excellent exposure on Birchmount Rd



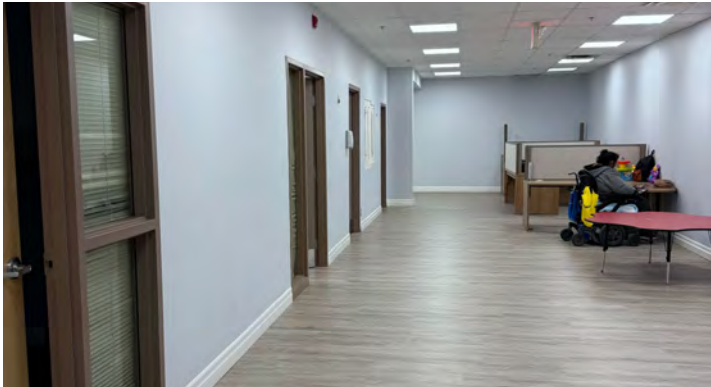
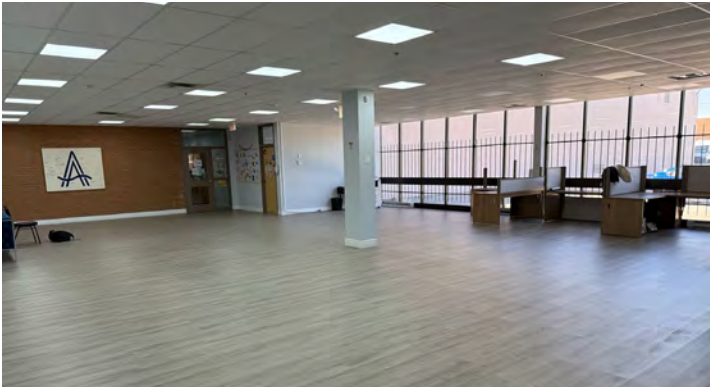
Ample parking



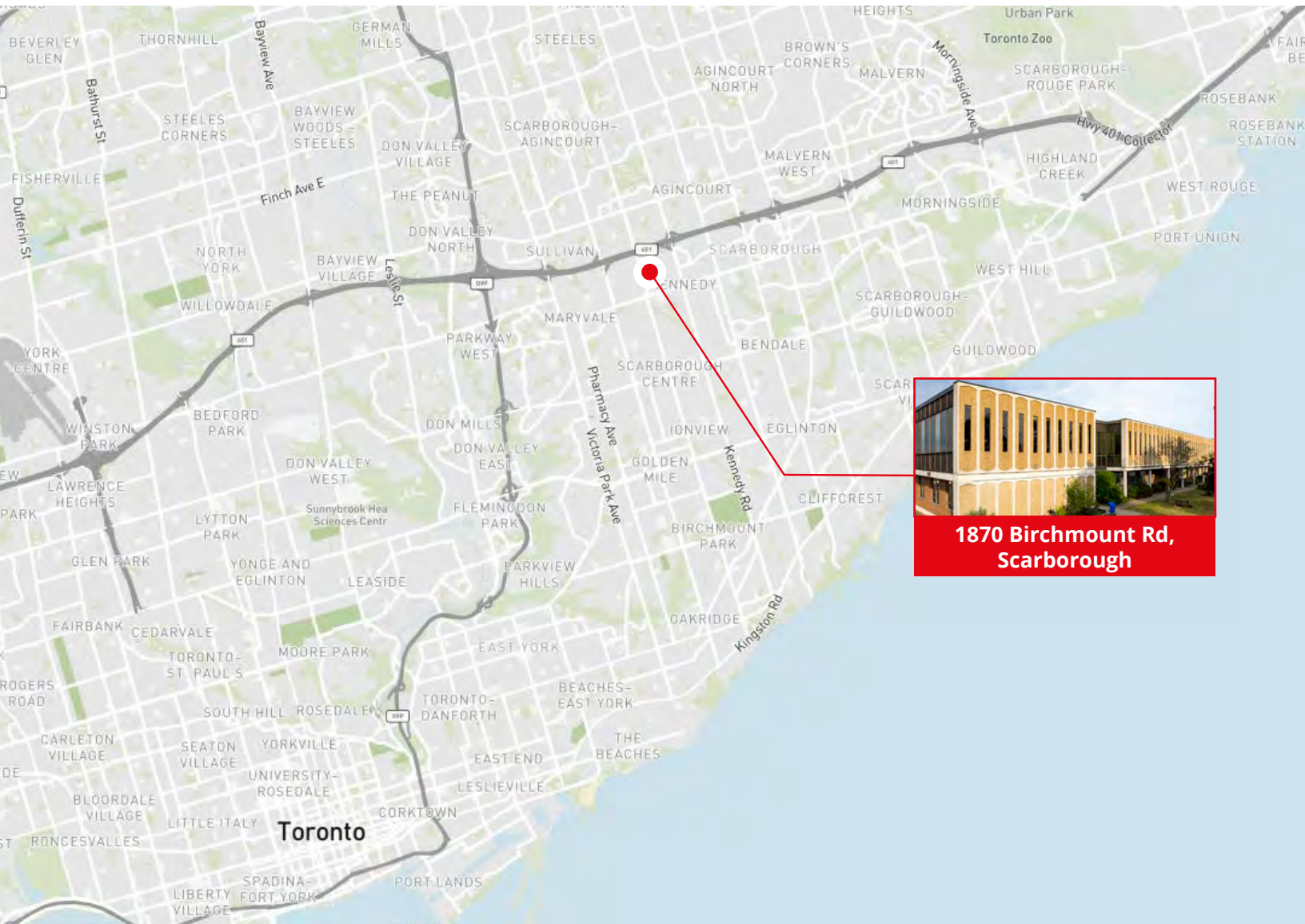
Minutes to Hwy 401 and amenities



TTC service at doorstep



Location



**1870 Birchmount Rd,
Scarborough**

Contact

Bryan Li, MBA**
Executive Vice President
416.564.8388
Bryan.Li@jll.com

Jenny Fang*
Sales Associate
416.823.6256
jenny.fang@jll.com

Ryan McDonnell*
Associate Vice President
647.204.8134
Ryan.Mcdonnell@jll.com

James Wagstaff*
Associate Vice President
647.640.2244
james.wagstaff@jll.com