



For lease

Crossroads Professional Center

1,375 - 3,117 r.s.f. available

2-story Office/Medical Building

4801 Dorsey Hall Dr/Ellicott City, Md 21042



4801 Dorsey Hall Dr Ellicott City, Md 21042

Highlights

1,375 - 3,117 r.s.f. of office/
medical space over two stories

1st Floor Suite 110 - 2,882 s.f.

1st Floor Suite 130 - 3,117 s.f.

2nd Floor Suite 206 - 1,375 s.f.

I-95

Immediate access
to I-95, Routes
29, 70, and 180

5.50

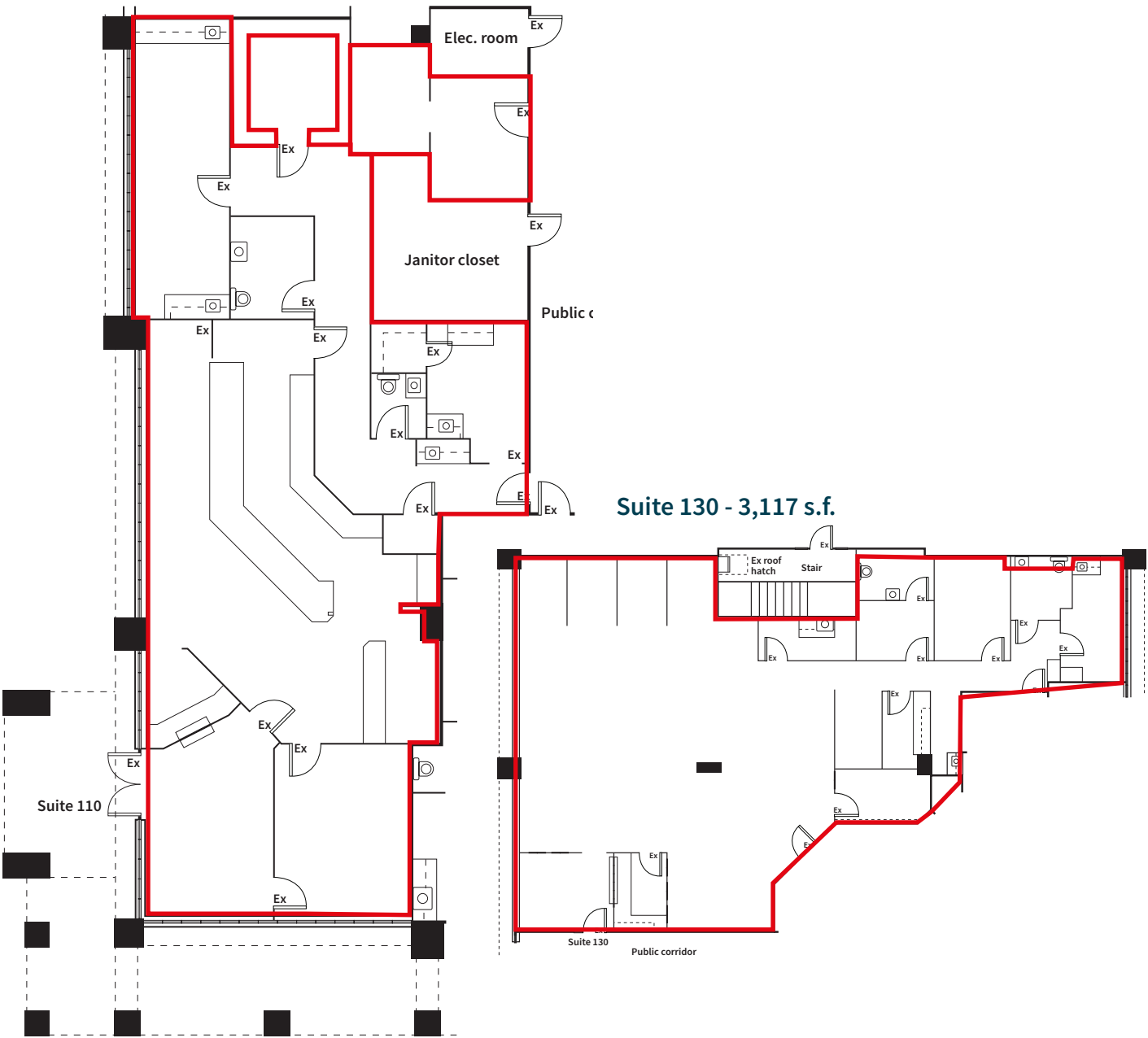
Parking: 5.50/1,000
s.f. ratio (150
surface spaces)

2025

2025 common area
renovations planned

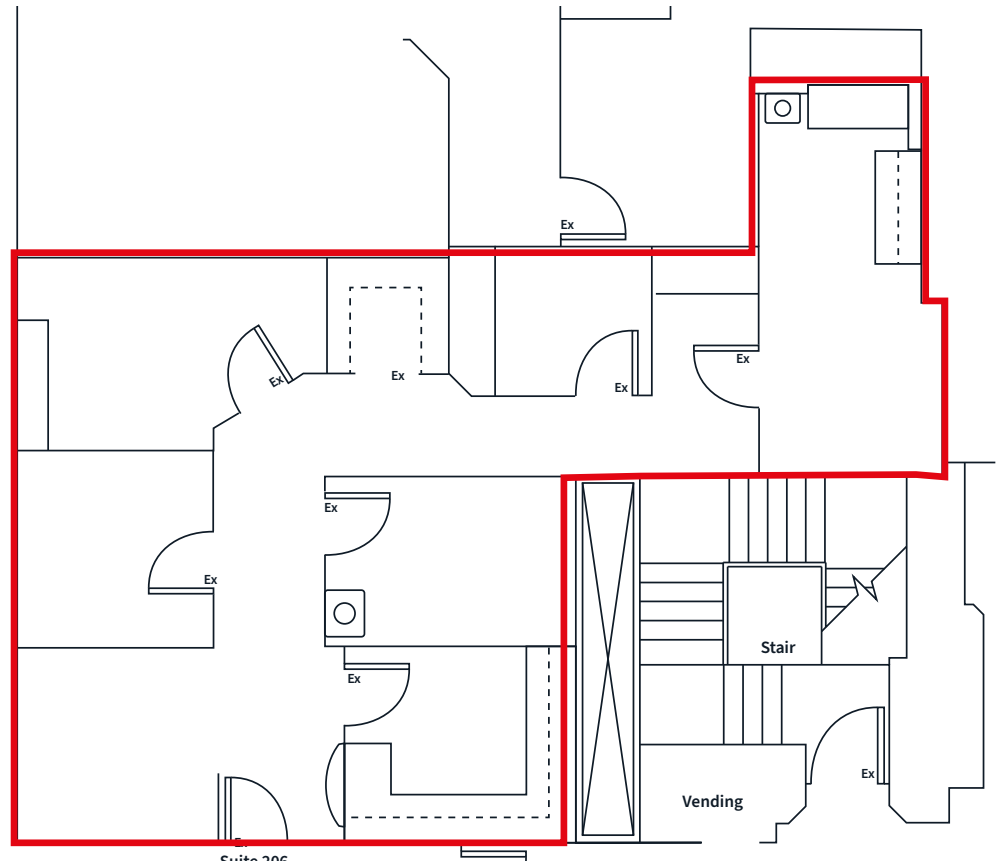
First floor plan

Suite 110 - 2882 s.f.



Second floor plan

Suite 206 - 1,375 s.f.





For more information, contact

Rob Freedman

rob.freedman@jll.com

+1 410 952 9444

Rachel Cappetta

rachel.cappetta@jll.com

+1 443 451 2607

About JLL

For over 200 years, JLL (NYSE: JLL), a leading global commercial real estate and investment management company, has helped clients buy, build, occupy, manage and invest in a variety of commercial, industrial, hotel, residential and retail properties. A Fortune 500® company with annual revenue of \$23.4 billion and operations in over 80 countries around the world, our more than 112,000 employees bring the power of a global platform combined with local expertise. Driven by our purpose to shape the future of real estate for a better world, we help our clients, people and communities SEE A BRIGHTER WAYSM. JLL is the brand name, and a registered trademark, of Jones Lang LaSalle Incorporated. For further information, visit jll.com.