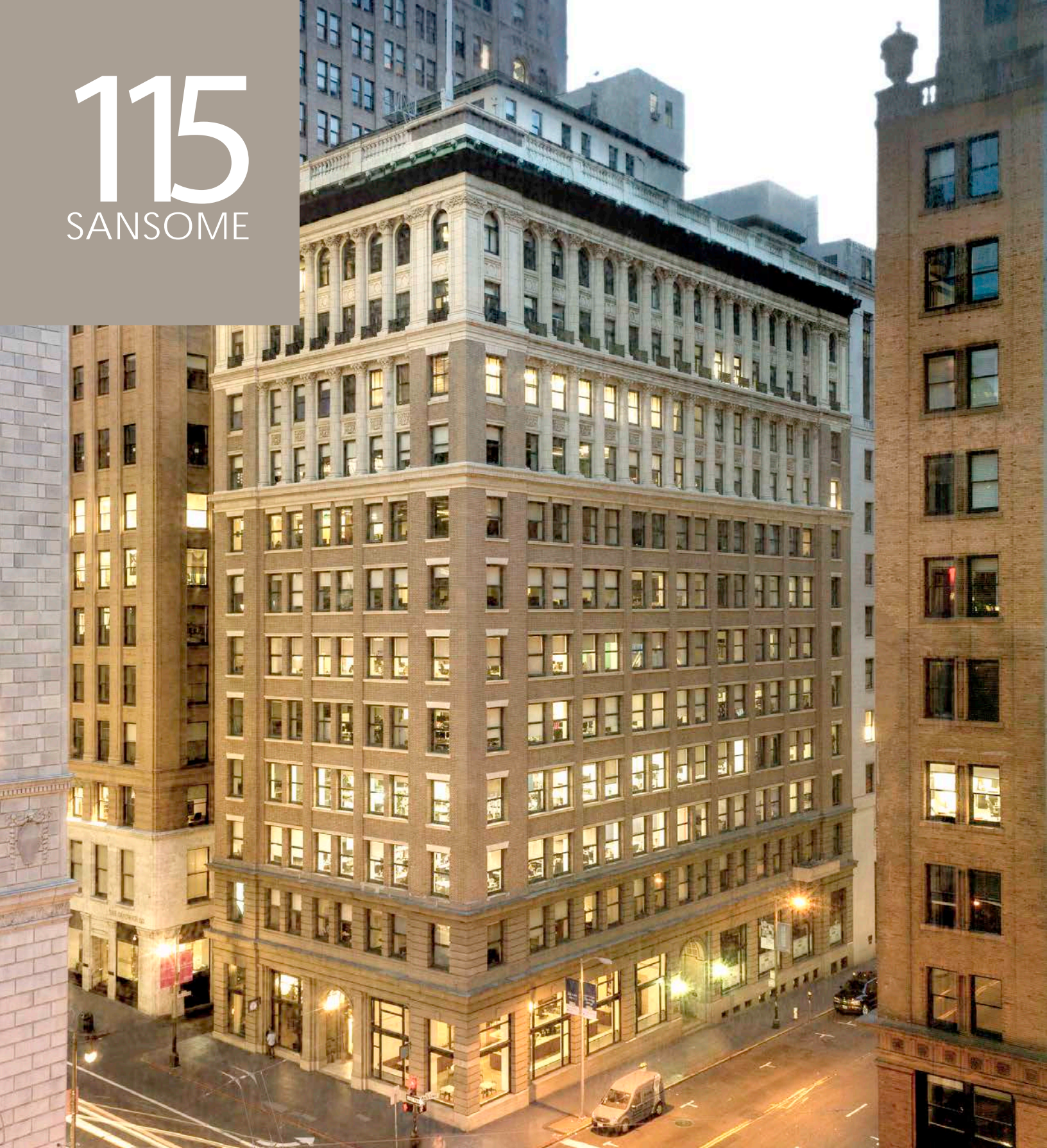


# 115

SANSOME



WES POWELL

+1 415 395 4901

[wes.powell@jll.com](mailto:wes.powell@jll.com)

RE License #1702003

CHRIS HOLLAND

+1 415 354 6917

[chris.holland@jll.com](mailto:chris.holland@jll.com)

RE License #01474598

V | VANBARTON  
GROUP

JLL

Jones Lang Lasalle Brokerage, Inc.  
Real estate License #: 01856260



# 115

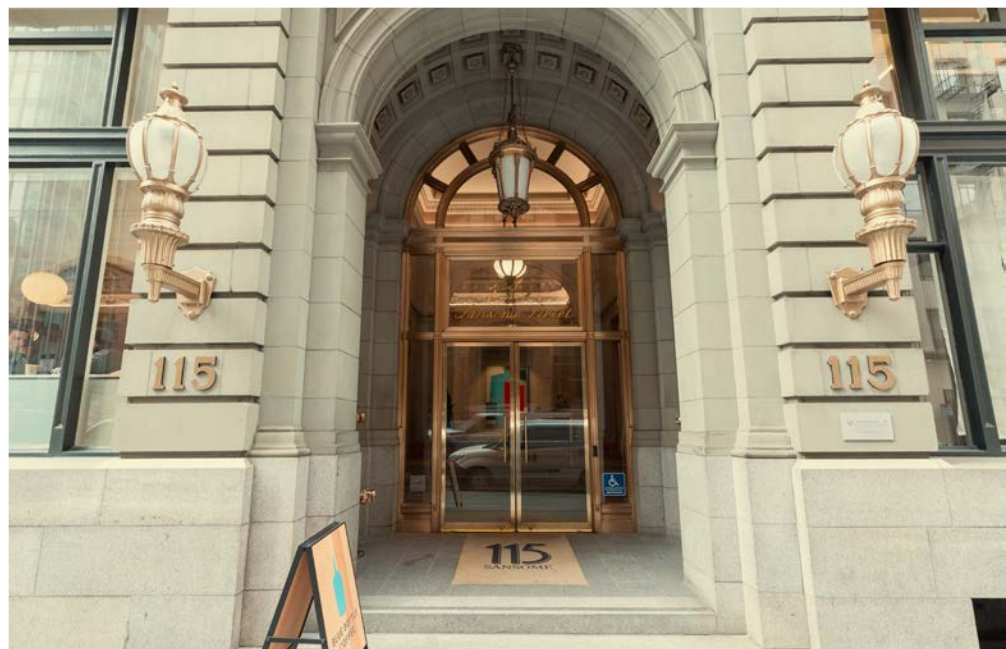
## SANSOME

## THE BUILDING

Built in 1912 to be the headquarters for Standard Oil Company, 115 Sansome is A San Francisco landmark and exquisite 19th century French Beaux-Arts masterpiece.

It has a total of 118,100 square feet of highly improved office and storage space with exceptional ground floor retail amenities including a sophisticated cocktail lounge and eatery, The Treasury and wildly-popular Blue Bottle Coffee, and the Shota, a Japanese sushi restaurant with seasonal items flown in from the Toyosu Fish Market in Tokyo.

There are 14 stories with the penthouse space located on both the 14th & 15th floor. The property is located less than one block from Market Street, home to San Francisco's Vast public transit network offering excellent connectivity to the entire Bay Area.



# PROPERTY FEATURES

San Francisco's premier  
creative boutique building



Efficient & Flexible  
Floor Plates



Exceptional Location,  
Steps away from  
BART/Muni/Bus/Rail



Exposed  
concrete floor,  
ceilings, and brick



Operable  
copper-clad  
windows



Large secure  
bike storage



Showers on site



Storage units



Cocktail lounge  
offering elevated  
drinks and new  
American nibbles



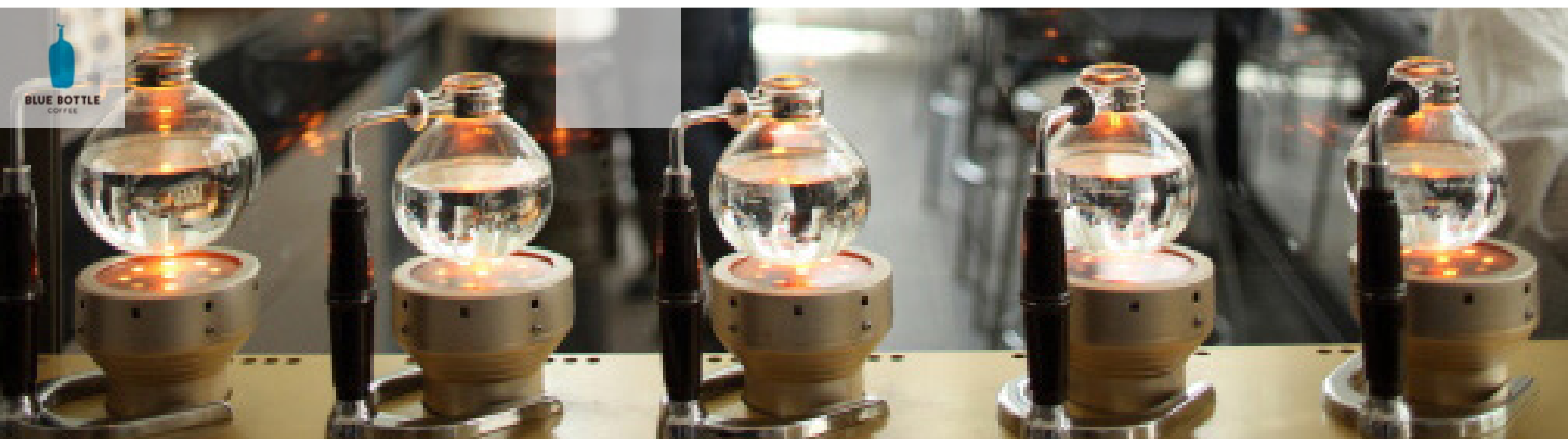
BLUE BOTTLE  
COFFEE

Specialty coffee  
roaster and brewer



THE SHOTA

Seasonally inspired  
Japanese  
tasting menu





# 2 Floor

9,005 RSF

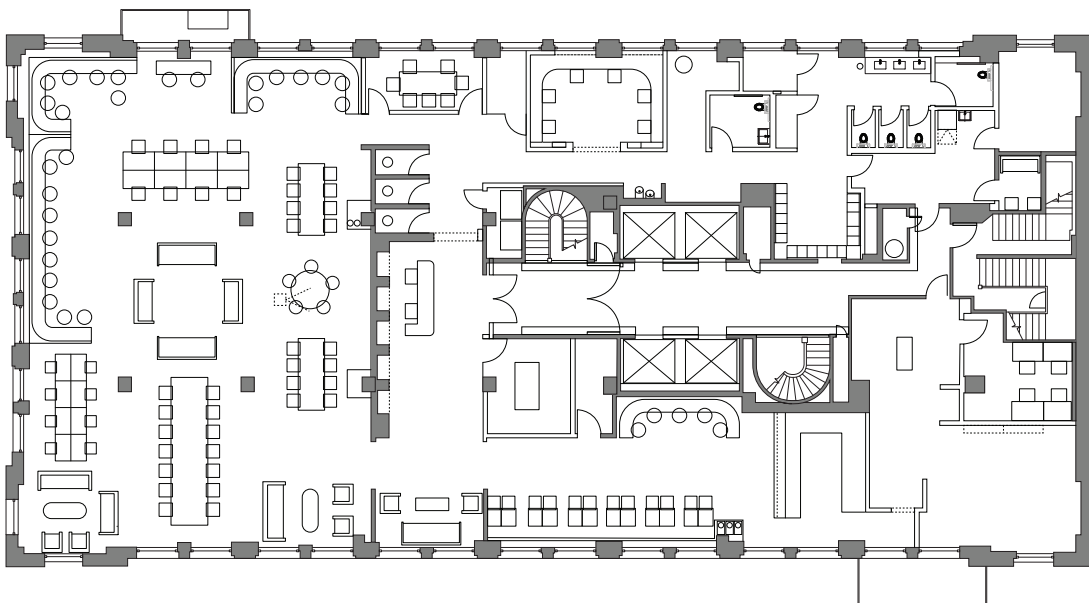
- Full PREP kitchen
- 2 conference rooms (seats 8)
- 4 phone booths
- Café and full coffee bar
- Seating for 111 people
- Locker room with showers
- Mother's room

115  
SANSOME



**High end furnishings** included exclusive suite amenities collaborative and flexible layout

VIRTUAL TOUR





# 2<sup>ND</sup> Floor Ammenity Center

9,005 RSF

- Full PREP kitchen
- 2 conference rooms (seats 8)
- 4 phone booths
- Café and full coffee bar
- Seating for 111 people
- Locker room with showers
- Mother's room

115  
SANSOME



**High end furnishings** included exclusive suite amenities collaborative and flexible layout

VIRTUAL TOUR





# 3 Floor

9,192 RSF

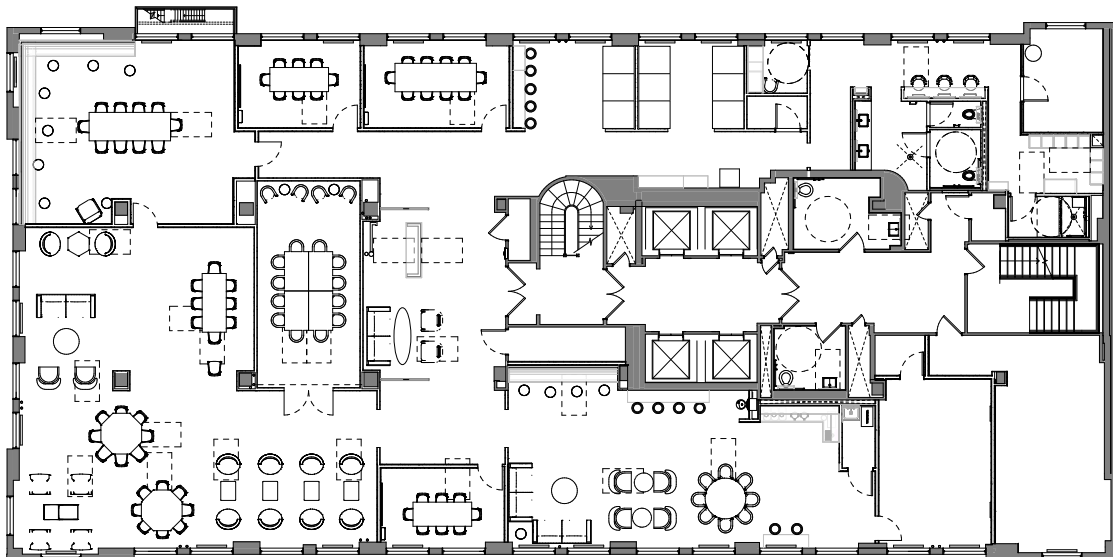
- 1 boardroom (seats 12)
- 3 conference rooms (seats 8)
- seating for 107 people
- 9 phone booths
- Coffee bar
- Mother's room
- Locker room with showers
- Fitness studio

115  
SANSOME



**High end furnishings** included exclusive suite amenities collaborative and flexible layout

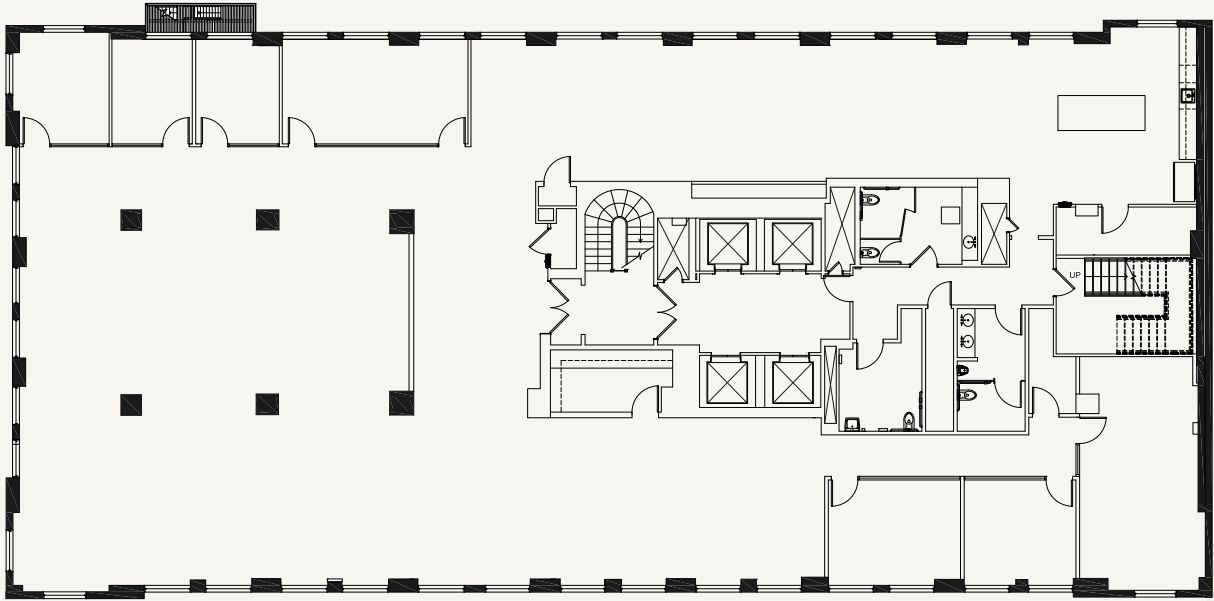
VIRTUAL TOUR



# 400 Suite

9,198 RSF

115  
SANSOME



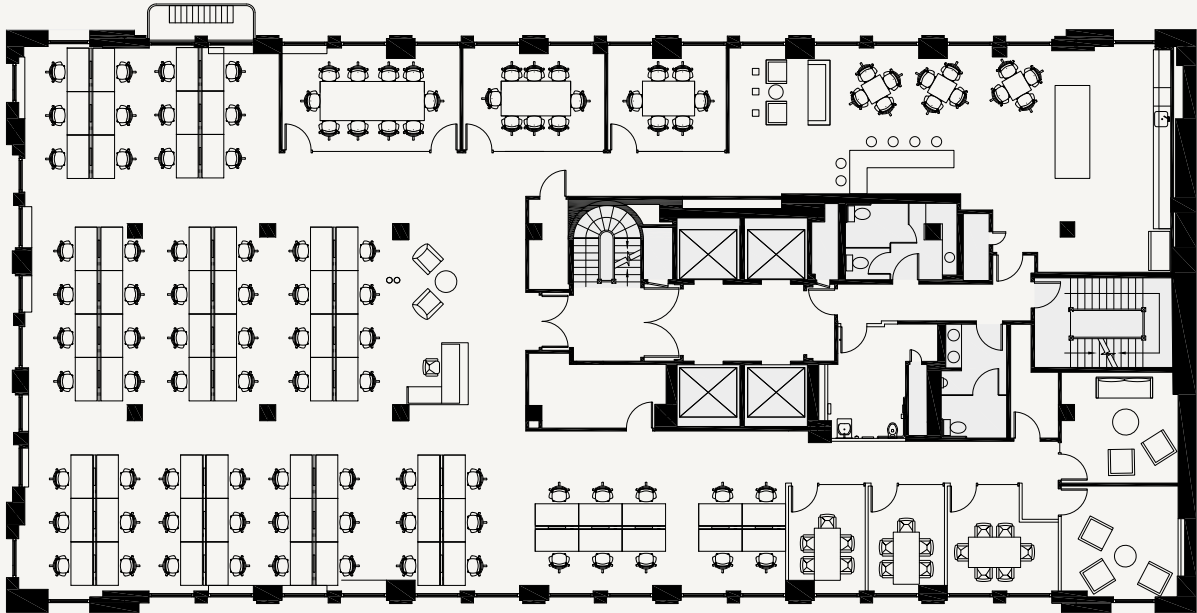
- Availability: 2/1/2026
- Creative Suite
- 4 private offices
- 2 conference rooms
- Kitchen/Break Area

- Exposed Ceiling
- IT room
- Storage Room
- Open area: Room for 60 workstations

# 500 Suite

9,351 RSF

115  
SANSOME



- Availability: 9/1/2025
- 3 private offices
- 5 conference rooms
- Kitchen/break area

- Storage room
- IT room
- Open area; room for 60 workstations



# 810 Suite

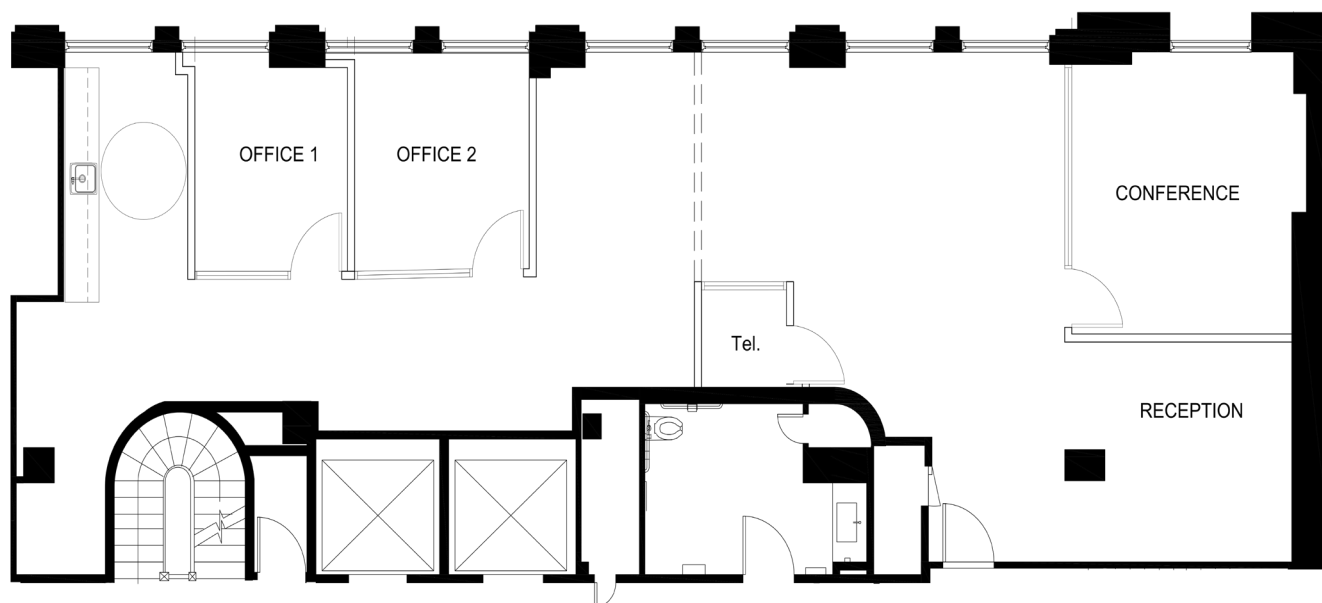
2,043 RSF

- Available now
- 2 private offices
- Conference room
- Kitchen
- Reception area
- IT room
- Open area

115  
SANSOME



VIRTUAL TOUR



# 1100 Suite

8,996 RSF

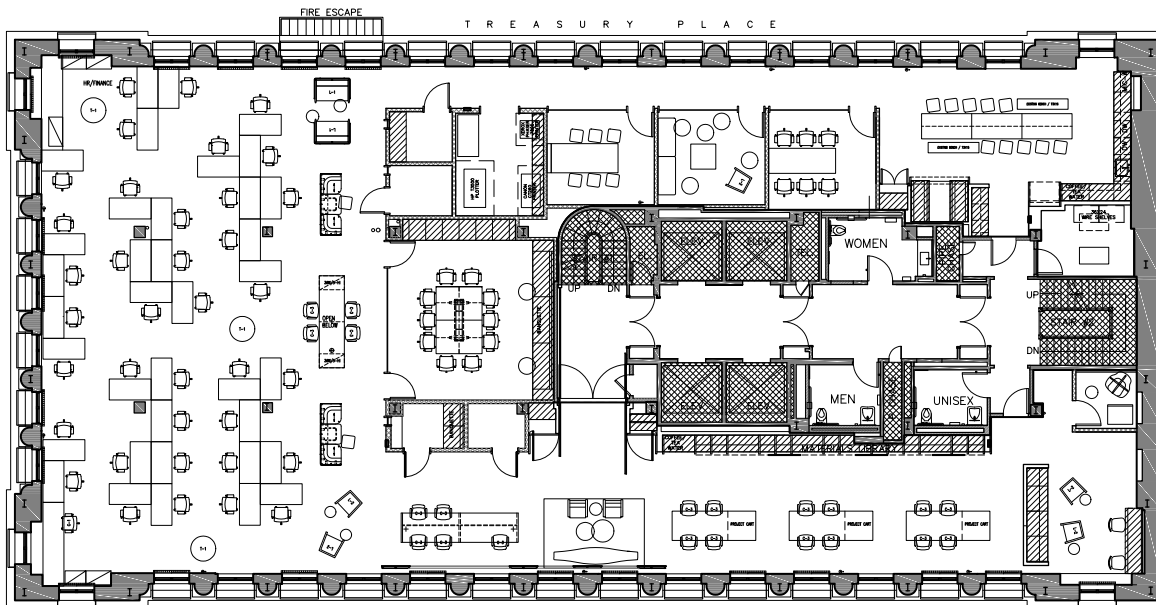
- Available now
- Creative space with exposed ceiling and brick
- Large open area for +/- 65 workstations
- Large all hands/break area
- 2 large conference rooms
- 2 medium conference rooms
- 3 huddle rooms

115  
SANSOME



VIRTUAL TOUR

\* Hypothetical Furniture Plan

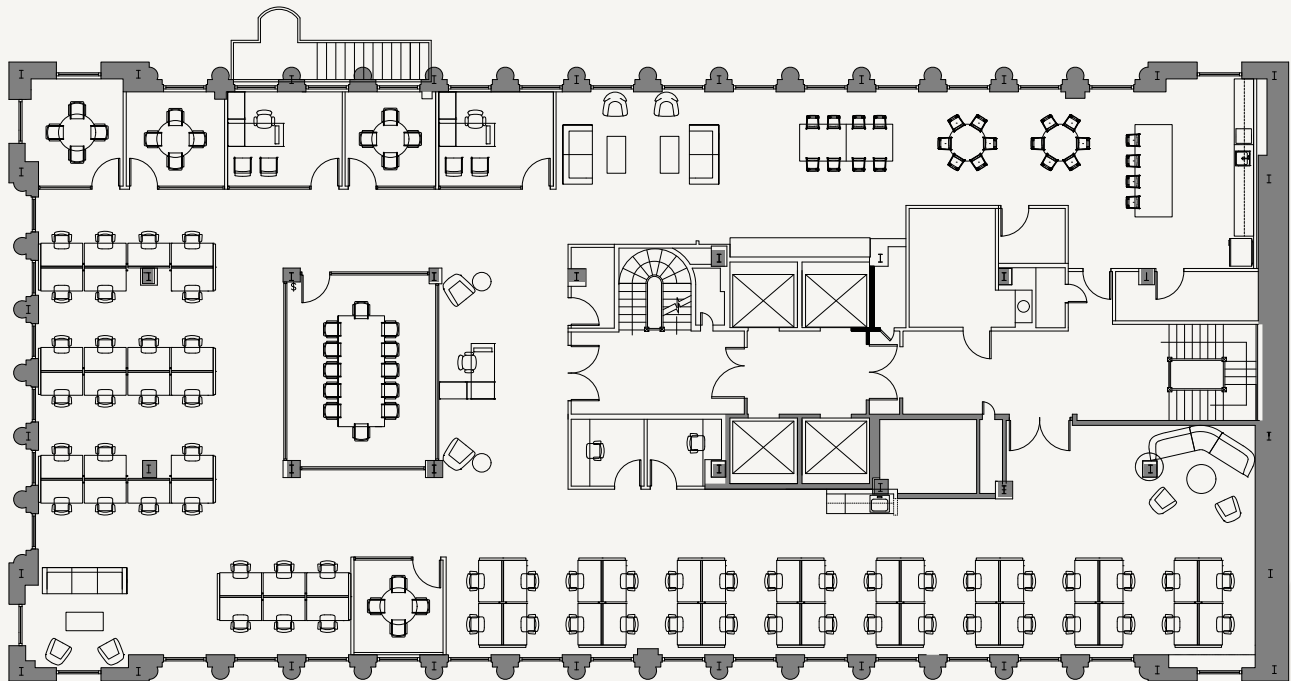




# 1200 Suite

8,921 RSF

115  
SANSOME



VIRTUAL TOUR

- Available now
- Brand new creative spec suite
- Open area: room for 60+ desks
- Full floor opportunity
- 2 private offices
- 4 conference rooms
- 1 large boardroom
- Kitchen/break area

# 115

SANSOME



## CONTACTS:

WES POWELL

+1 415 395 4901

[wes.powell@jll.com](mailto:wes.powell@jll.com)

RE License #1702003

CHRIS HOLLAND

+1 415 354 6917

[chris.holland@jll.com](mailto:chris.holland@jll.com)

RE License #01474598

V | VANBARTON  
GROUP

JLL

Jones Lang Lasalle Brokerage, Inc.  
Real estate License #: 01856260