



Brand New 26,807 SF
Medical/Office Building
For Lease



105 Doughty Boulevard, Inwood

Building Overview

Availability:

3rd floor: 7,157 RSF

2nd floor: 7,853 RSF

1st floor: 5,706 RSF

Lower Level: 6,089 RSF

Total: 26,807 RSF

Asking Rent: Upon Request



Built-to-suit
for one or
multiple users



2027 projected
delivery



Building signage/
naming rights
available



Outdoor
balconies/
lounge areas



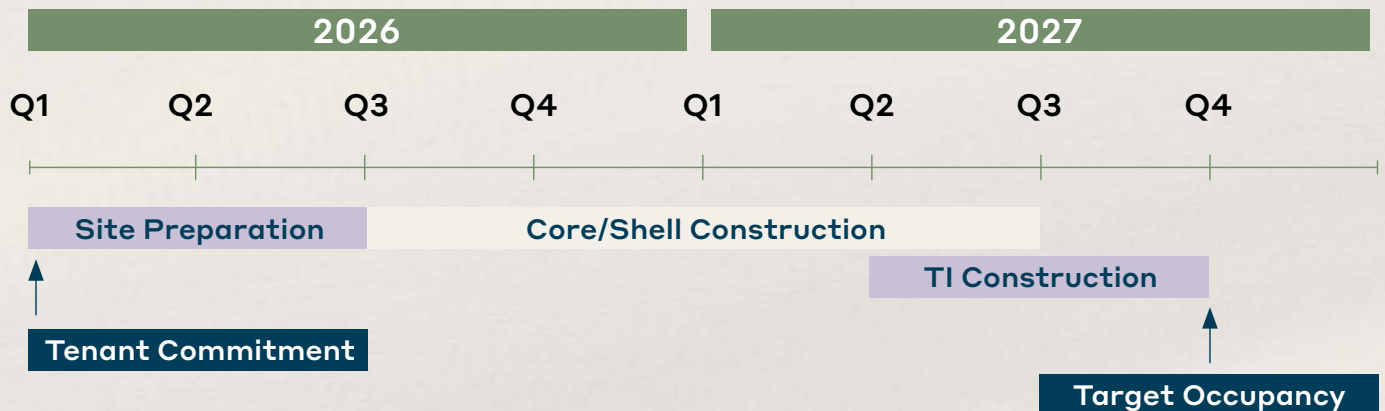
Densely
populated area



Municipal
parking across
the street

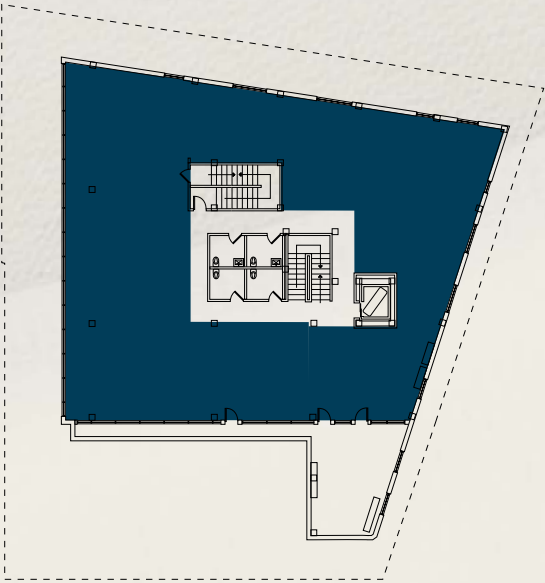


Walking
distance
to Inwood
LIRR Station

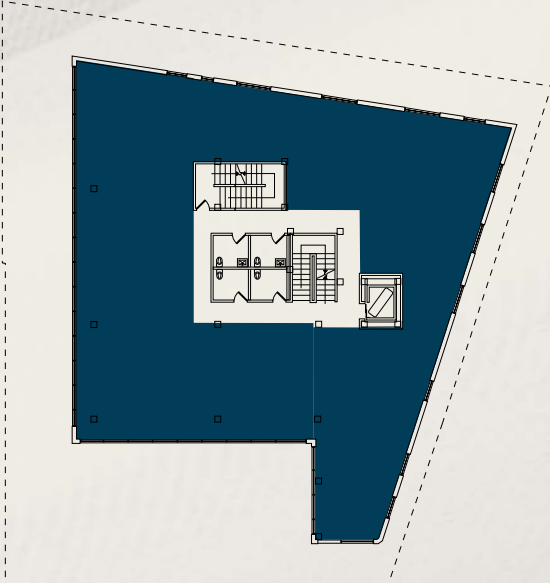


Floor Plans

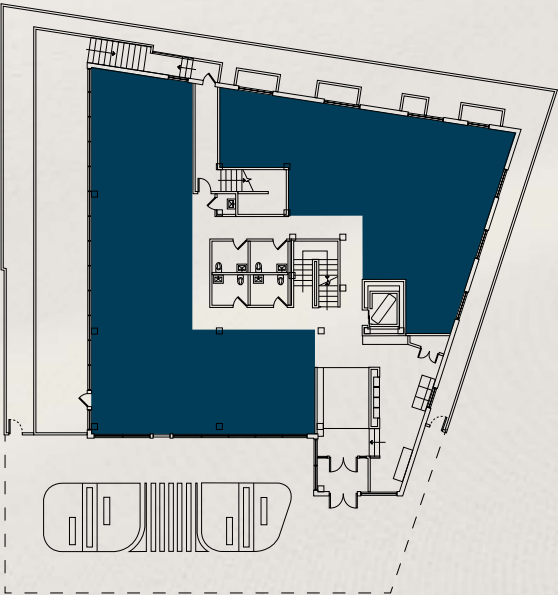
Third Floor
7,157 RSF



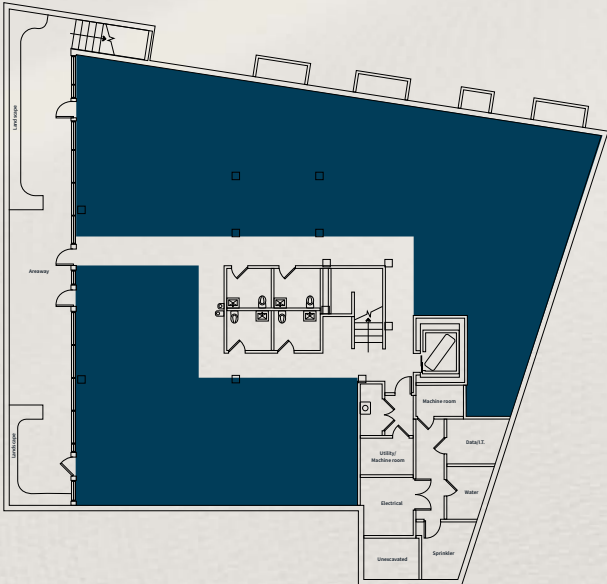
Second Floor
7,853 RSF



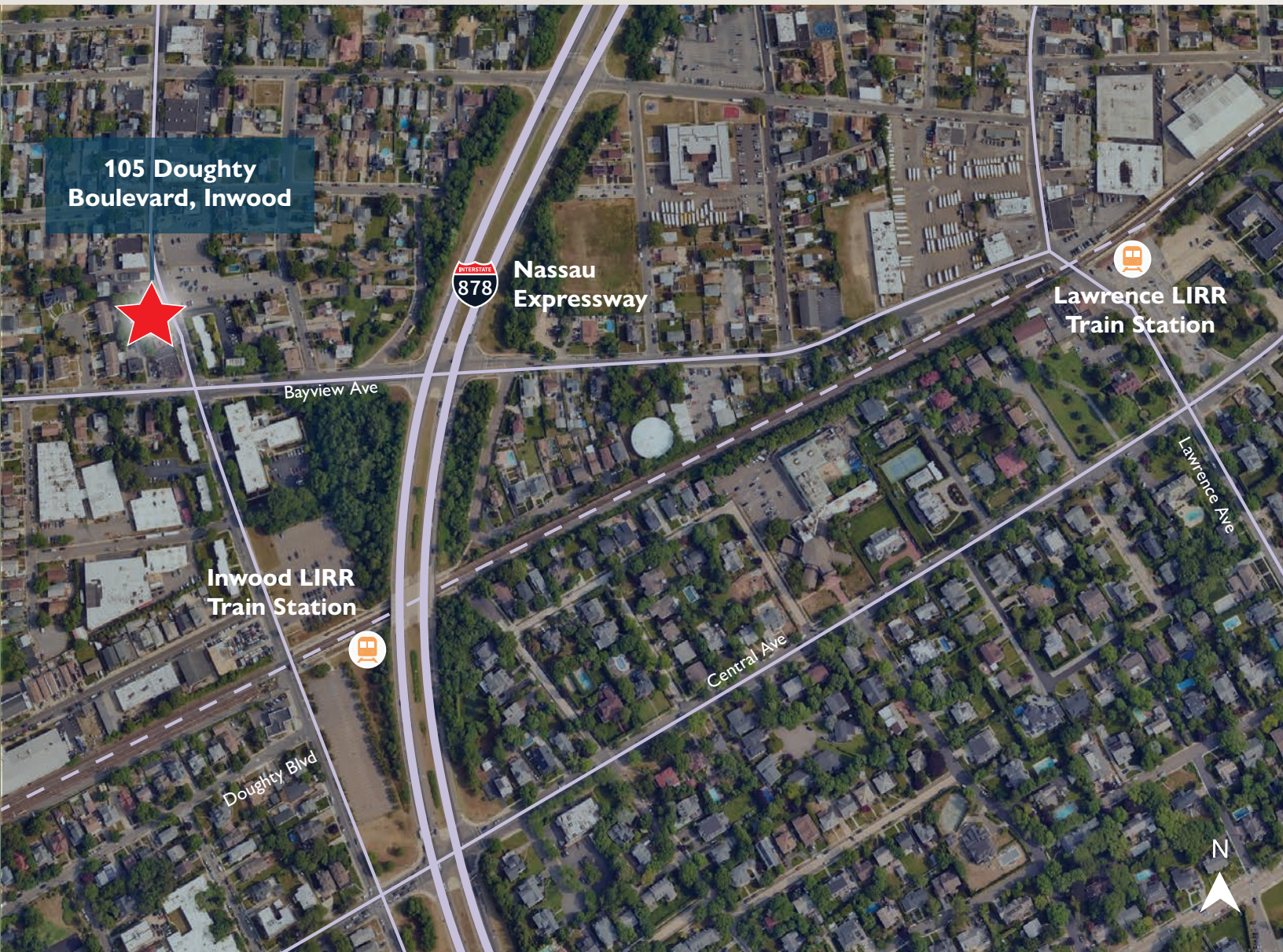
First Floor
5,706 RSF



Lower Level
6,089 RSF



Location



Exclusive Brokers

Kyle Crennan

Managing Director
kyle.crennan@jll.com
+1 631 962 2896

Joseph Lopresti

Executive Vice President
joseph.lopresti@jll.com
+1 631 962 7384



Although information has been obtained from sources deemed reliable, JLL does not make any guarantees, warranties or representations, express or implied, as to the completeness or accuracy as to the information contained herein. Any projections, opinions, assumptions or estimates used are for example only. There may be differences between projected and actual results, and those differences may be material. JLL does not accept any liability for any loss or damage suffered by any party resulting from reliance on this information. If the recipient of this information has signed a confidentiality agreement with JLL regarding this matter, this information is subject to the terms of that agreement. ©2025 Jones Lang LaSalle Brokerage, Inc. All rights reserved.