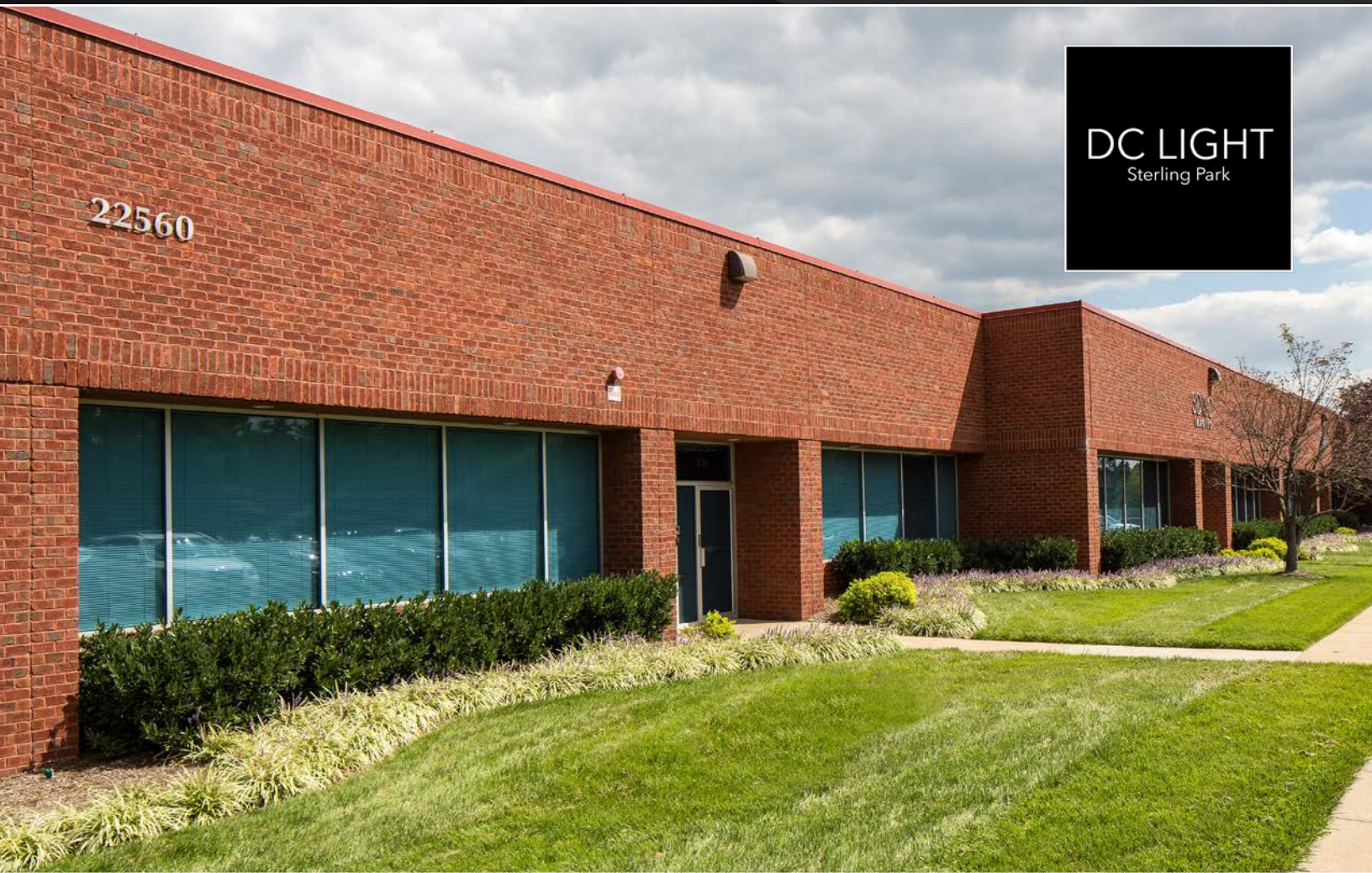


Sterling Park

*Sterling Park
Sterling, VA*

DC LIGHT
Sterling Park



**JLL METRO DC
INDUSTRIAL TEAM**

John Dettleff
703.485.8831
john.dettleff@jll.com

Dan Coats
703.891.8410
dan.coats@jll.com

Sam Haas
703.485.8733
sam.haas@jll.com



**LIGHT
INDUSTRIAL
SPACE**



**IMMEDIATE
ACCESS TO
RT 28 & RT 50**



**HIGH QUALITY
FLEX**



**INSTITUTIONALLY
OWNED AND
MANAGED**

E L I O N 



22446 Davis Drive

DC LIGHT
Sterling Park

22400 Davis Drive

22455 Davis Drive

22370 Davis Drive

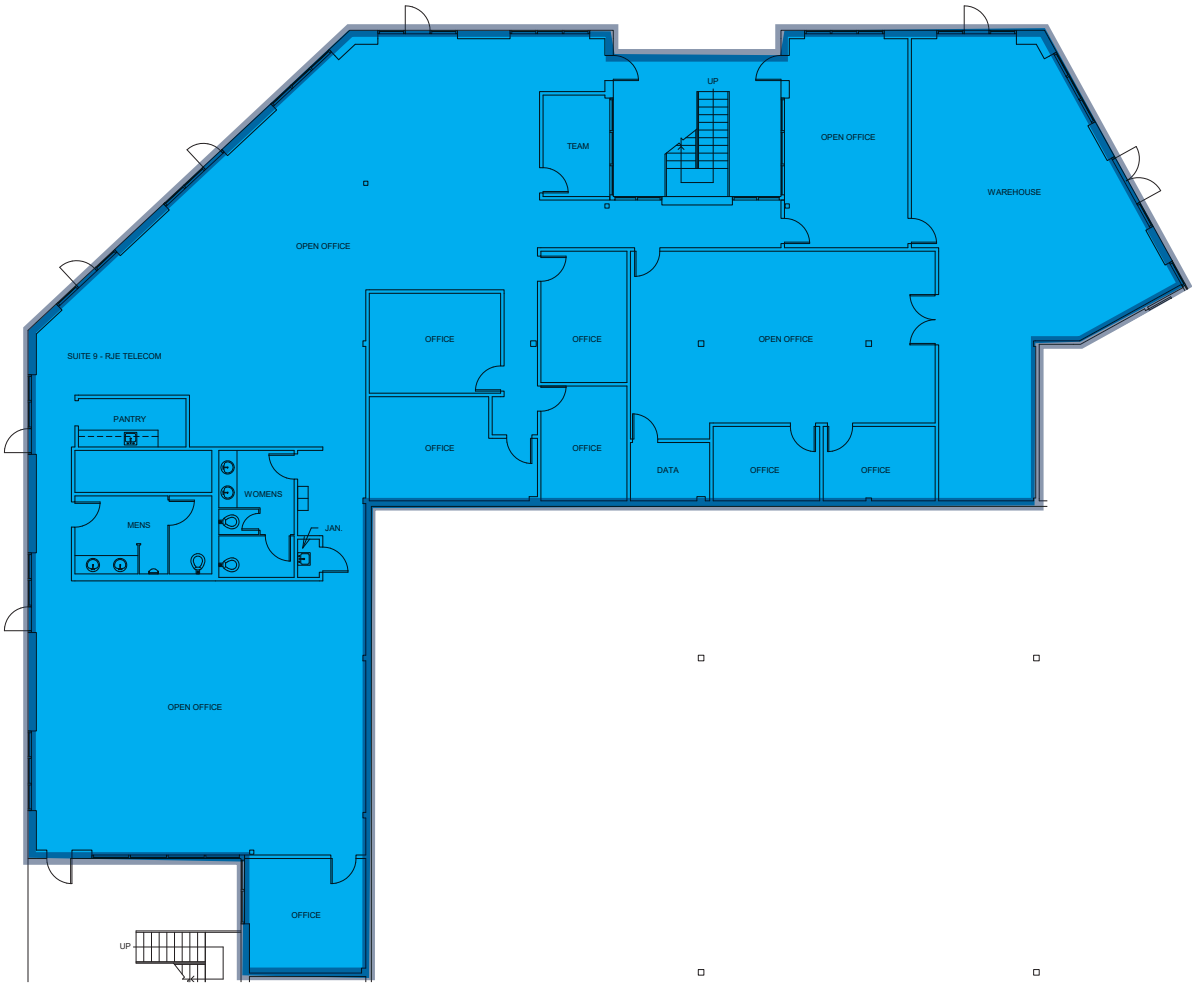
22560 Glenn Drive

405 Glenn Drive

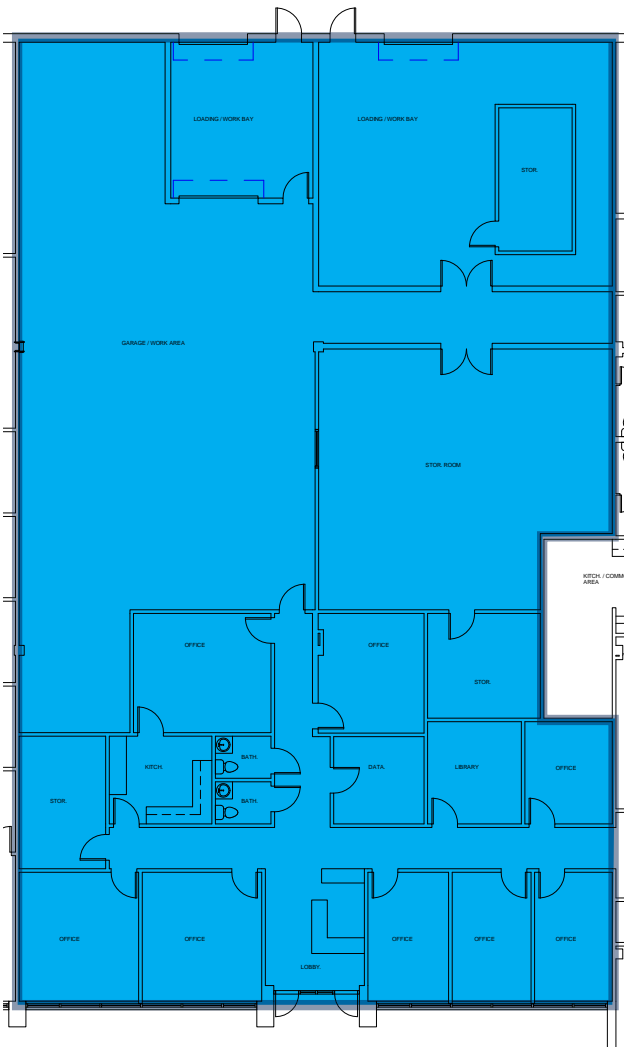
403 Glenn Drive



403 Glenn Drive
Suite 9 | 8,038 SF | FIRST FLOOR OFFICE SPACE



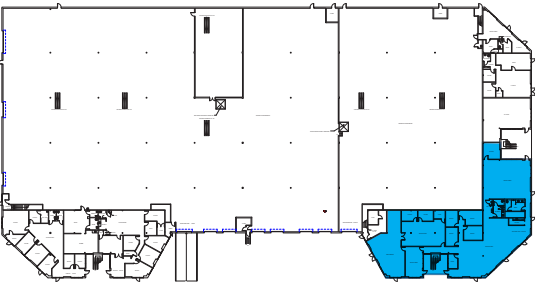
22560 Glenn Drive
Suite 114 | 7,967 SF | AVAILABLE



16.0'
CLEAR
HEIGHT

2
LOADING
DOCKS

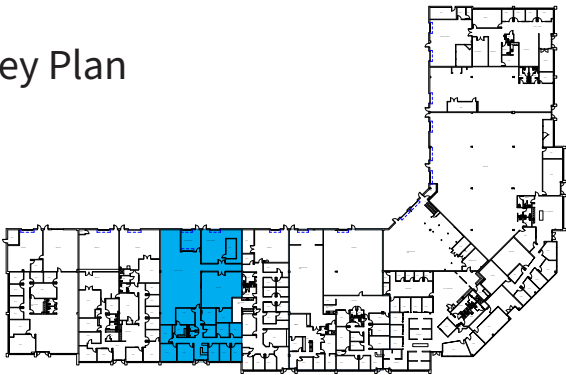
Key Plan



Front



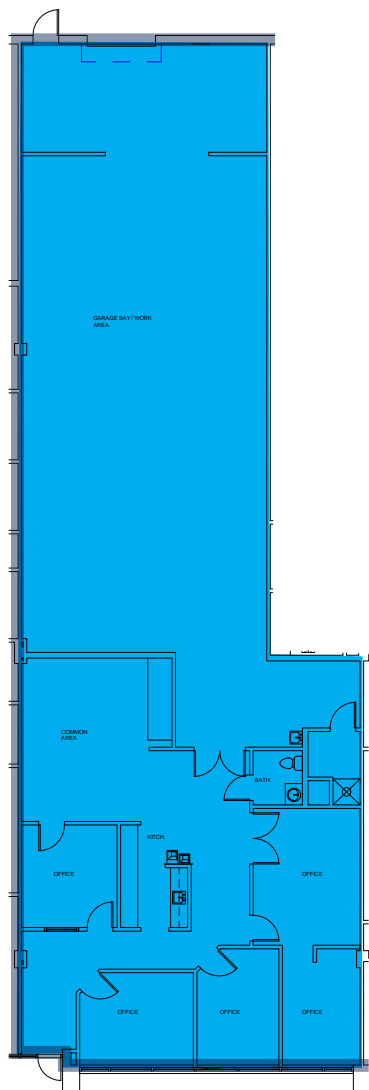
Key Plan



Front

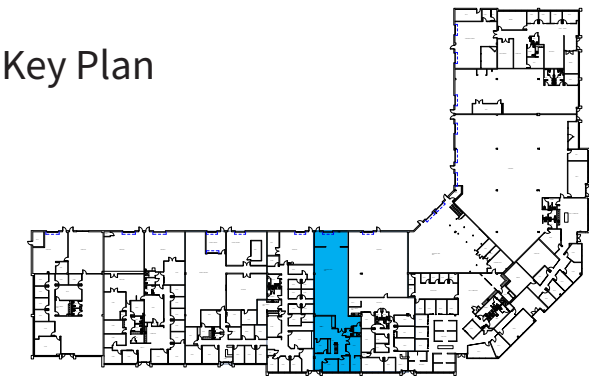


22560 Glenn Drive
Suite 112 | 4,049 SF | CAN BE COMBINED WITH SUITE 111
AVAILABLE MAY 2026



16.0'
CLEAR
HEIGHT

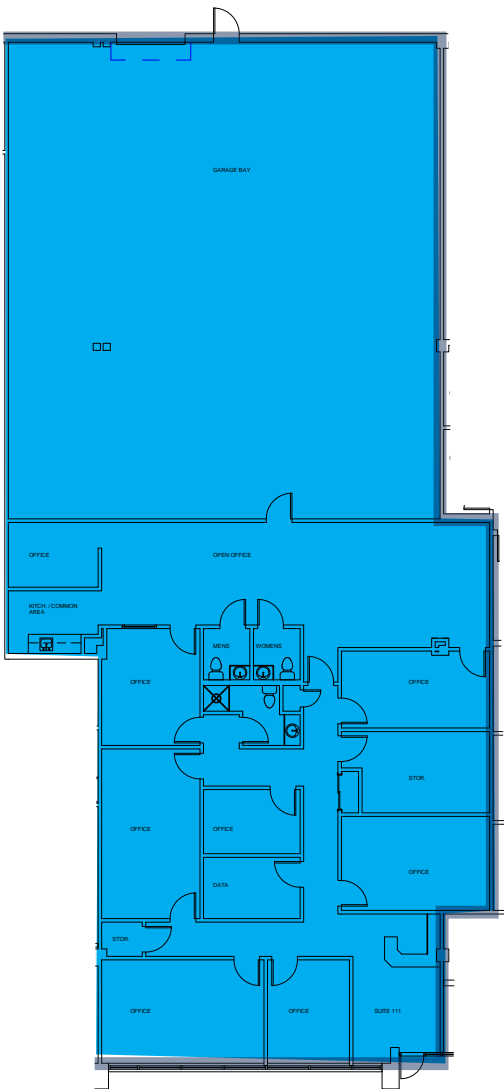
1
LOADING
DOCK



Front

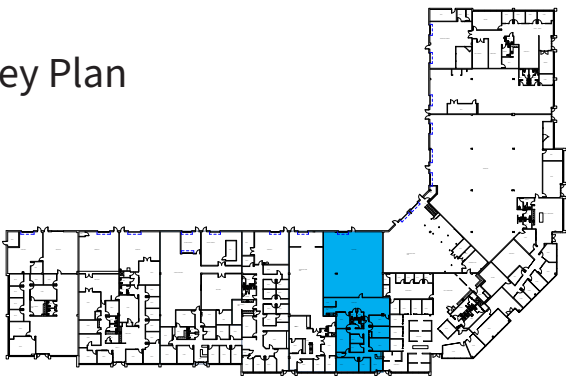


22560 Glenn Drive
Suite 111 | 5,965 SF | CAN BE COMBINED WITH SUITE 112



16.0'
CLEAR
HEIGHT

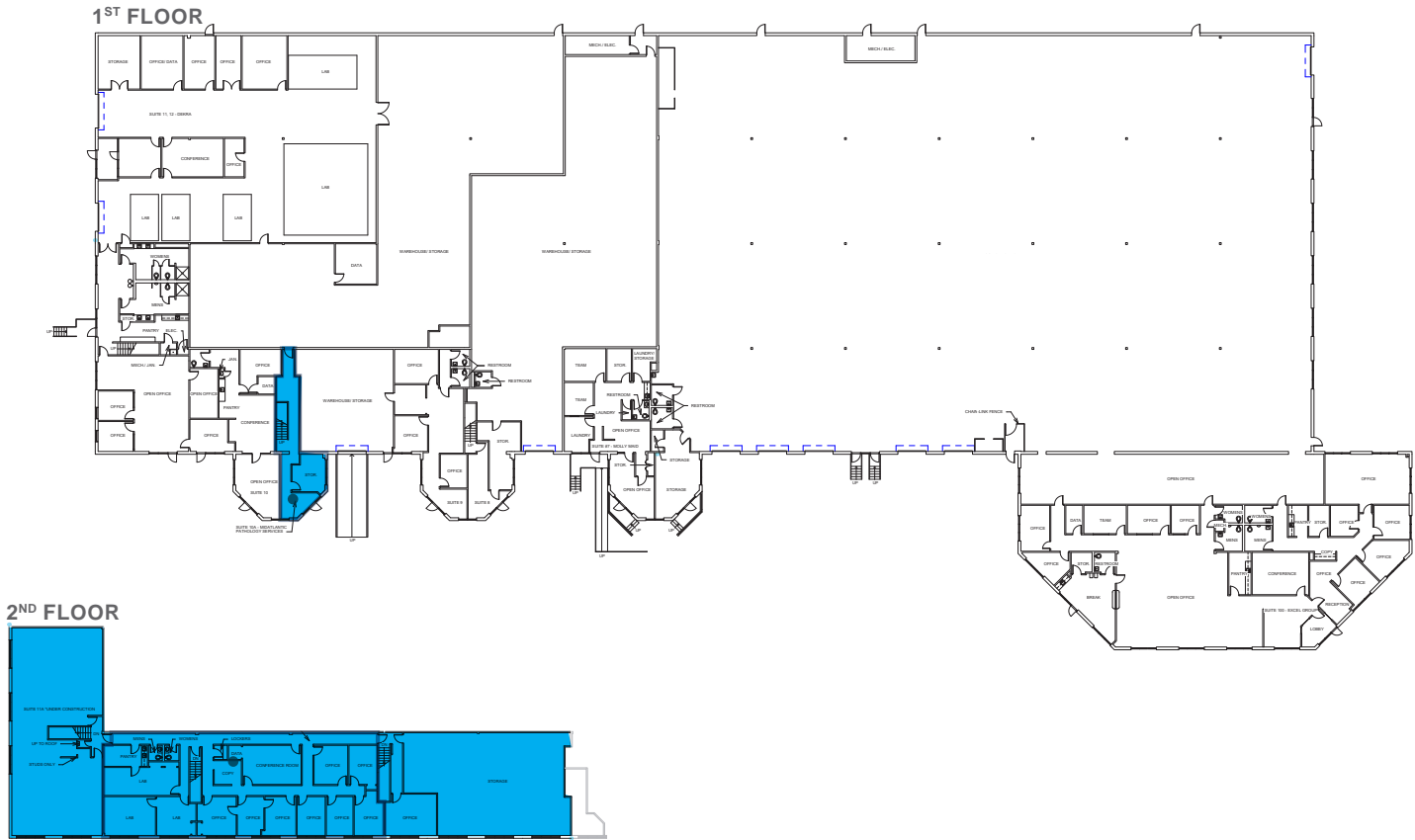
1
LOADING
DOCK



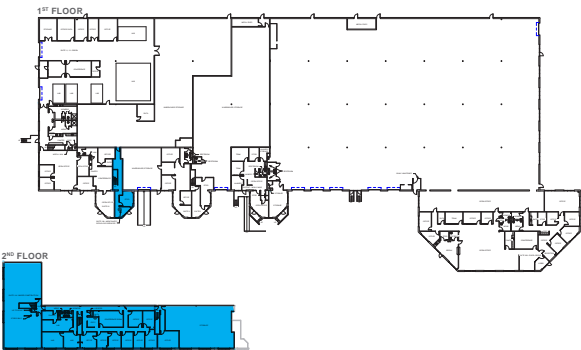
Front



405 Glenn Drive
Suite 10A | 6,624 SF | AVAILABLE

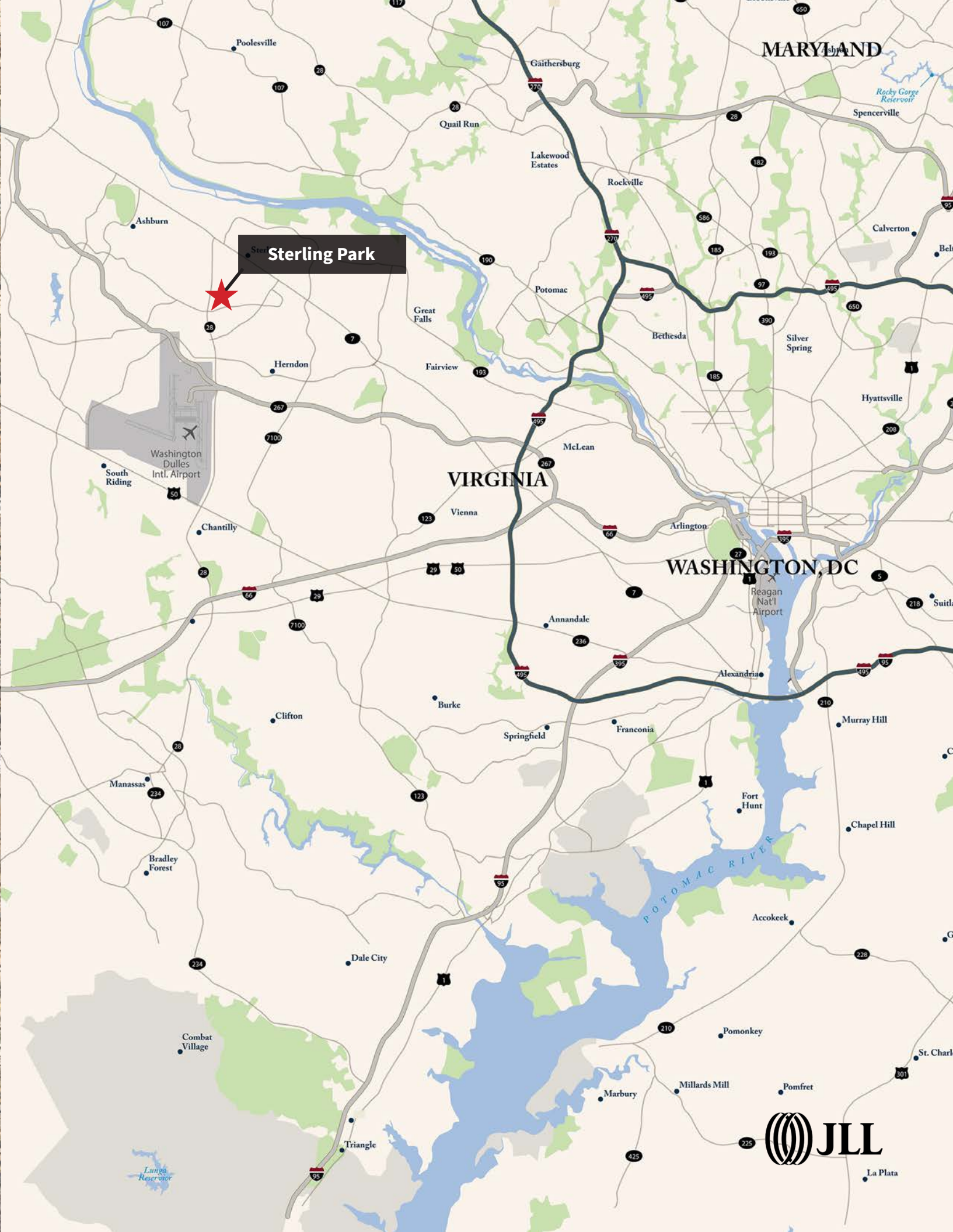


Key Plan



Front







DC LIGHT
Sterling Park

**FOR MORE INFORMATION,
PLEASE CONTACT:**

John Dettleff
703.485.8831
john.dettleff@jll.com

Dan Coats
703.891.8410
dan.coats@jll.com

Sam Haas
703.485.8733
sam.haas@jll.com



Although information has been obtained from sources deemed reliable, neither Owner nor JLL makes any guarantees, warranties or representations, express or implied, as to the completeness or accuracy as to the information contained herein. Any projections, opinions, assumptions or estimates used are for example only. There may be differences between projected and actual results, and those differences may be material. The Property may be withdrawn without notice. Neither Owner nor JLL accepts any liability for any loss or damage suffered by any party resulting from reliance on this information. If the recipient of this information has signed a confidentiality agreement regarding this matter, this information is subject to the terms of that agreement. ©2022. Jones Lang LaSalle IP, Inc. All rights reserved.