

DC LIGHT
Dulles Business Park



JLL METRO DC INDUSTRIAL TEAM

John Dettleff
703.485.8831
john.dettleff@jll.com

Dan Coats
703.891.8410
dan.coats@jll.com

Sam Haas
703.485.8733
sam.haas@jll.com



HIGH QUALITY
OFFICE SPACE



IMMEDIATE
ACCESS TO
RT 28 & RT 50



LIGHT
INDUSTRIAL
SPACE



INSTITUTIONALLY
OWNED AND
MANAGED



DC LIGHT
Dulles Business Park

3680 Centerview Drive

3684 Centerview Drive

3750 Centerview Drive

3855 Centerview Drive

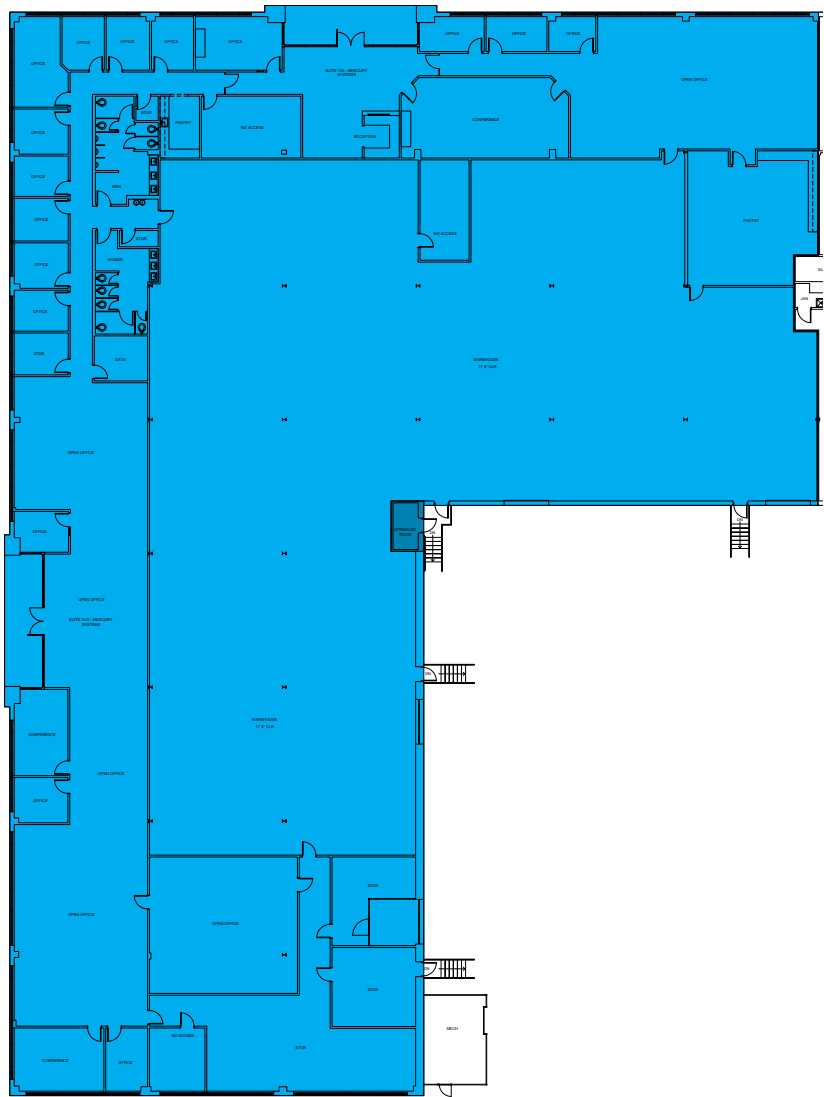
3859 Centerview Drive

3863 Centerview Drive

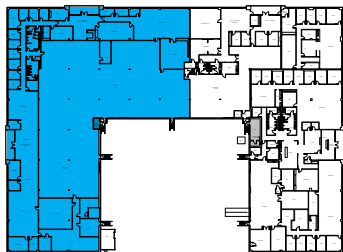


JLL

3680 Centerview Drive
Suite 100 | 32,498 SF | AVAILABLE 8/1/2026



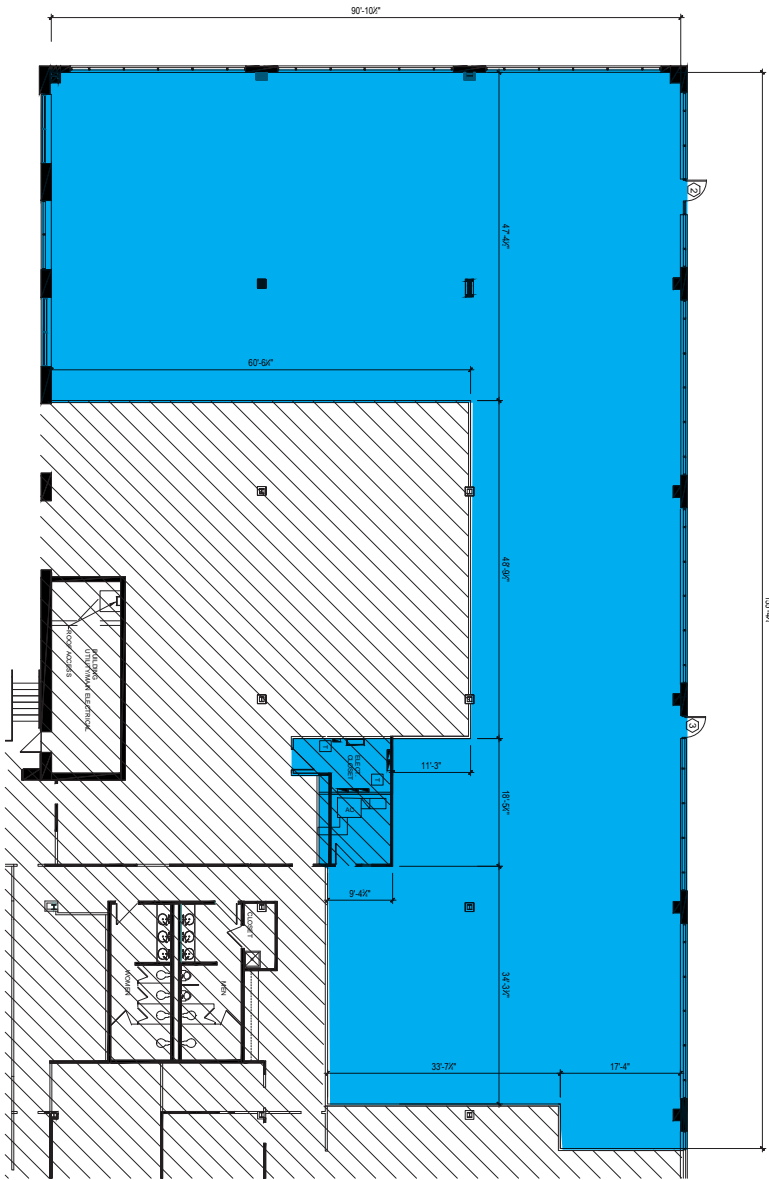
Key Plan



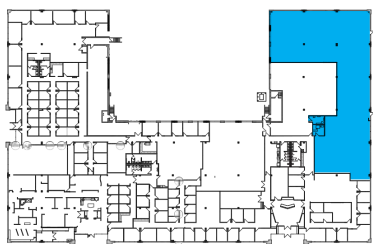
Front



3684 Centerview Drive
Suite 100F | 9,224 SF | OFFICE



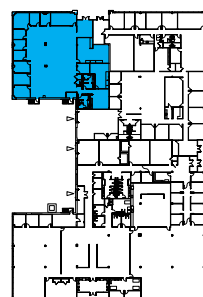
Key Plan



Front



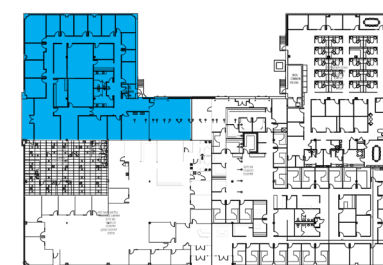
Suite 500 | 7,273 SF | OFFICE



Front

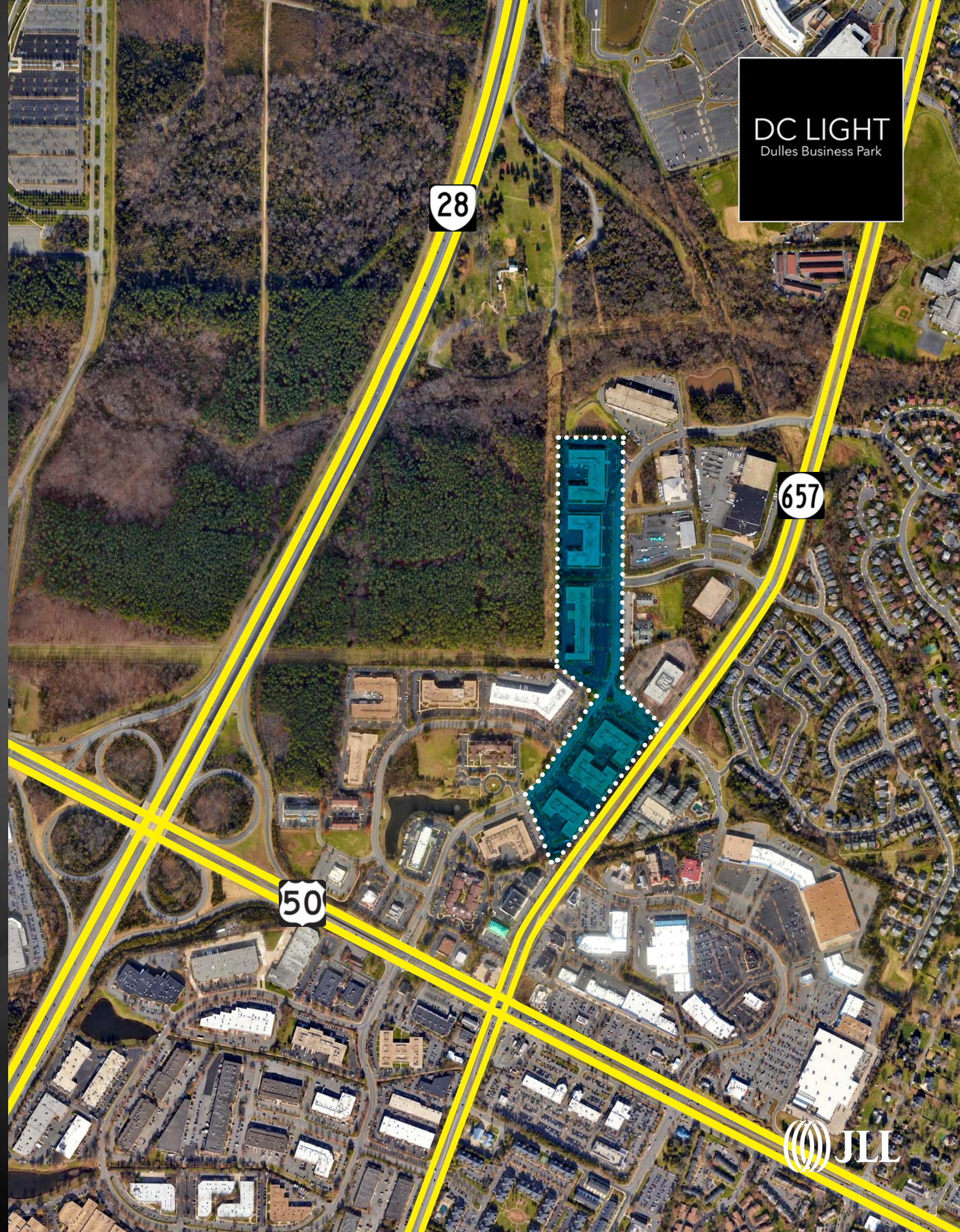


Suite 500A | 8,855 SF | OFFICE



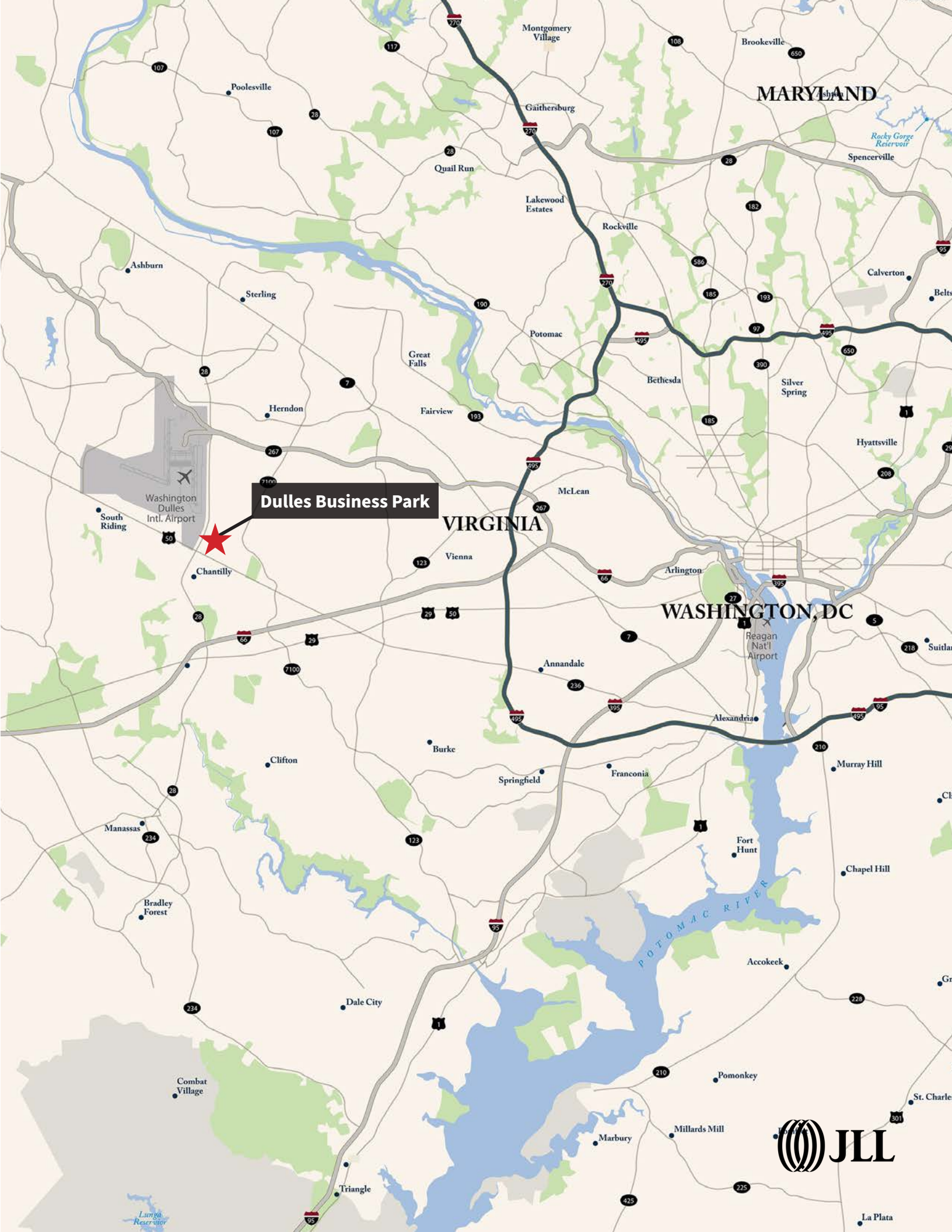
Front



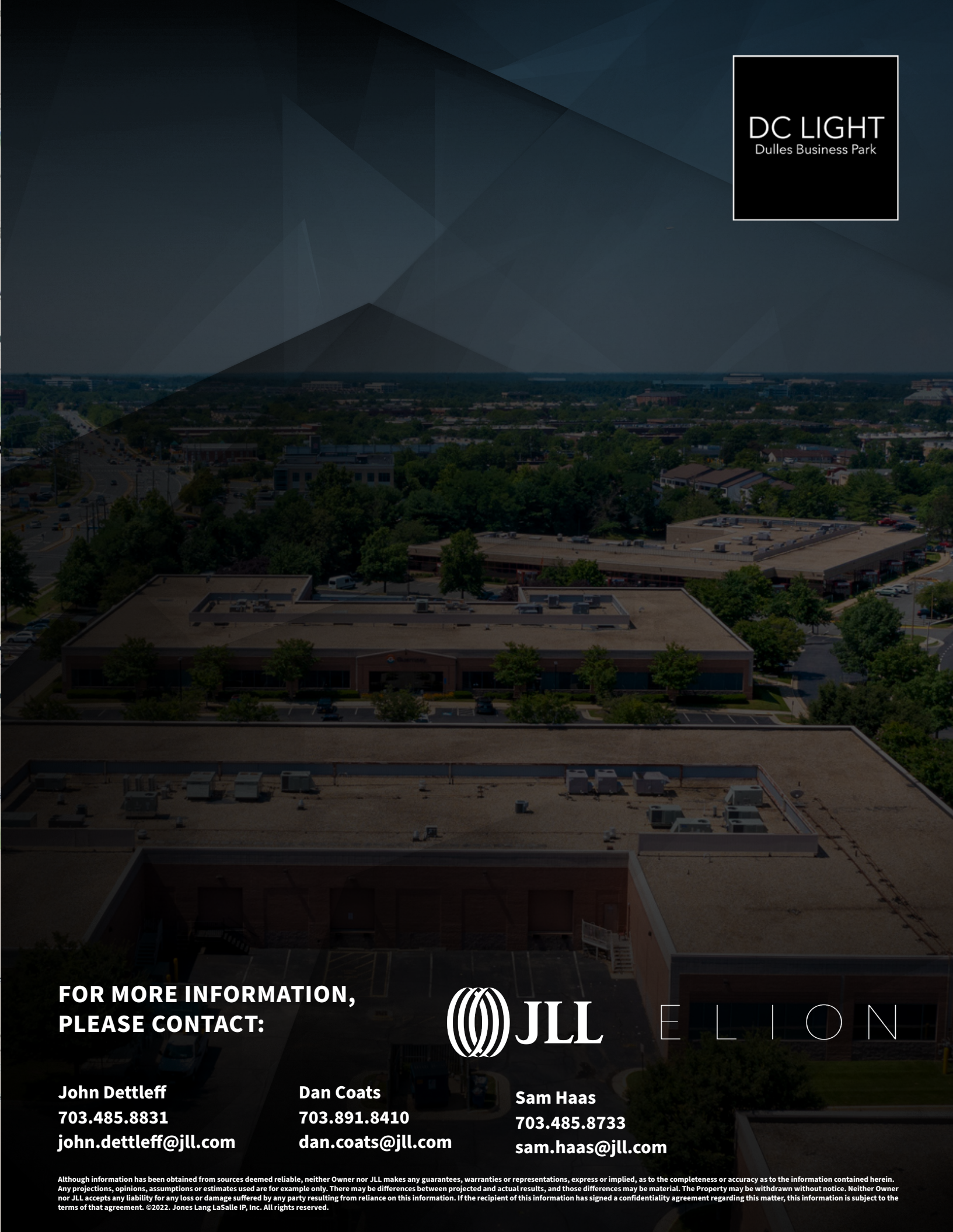


DC LIGHT
Dulles Business Park

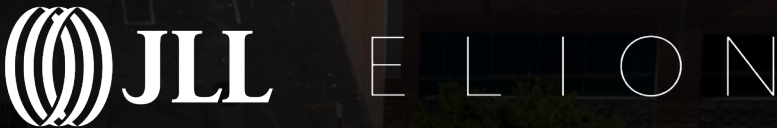




DC LIGHT
Dulles Business Park



FOR MORE INFORMATION,
PLEASE CONTACT:



John Dettleff
703.485.8831
john.dettleff@jll.com

Dan Coats
703.891.8410
dan.coats@jll.com

Sam Haas
703.485.8733
sam.haas@jll.com

Although information has been obtained from sources deemed reliable, neither Owner nor JLL makes any guarantees, warranties or representations, express or implied, as to the completeness or accuracy as to the information contained herein. Any projections, opinions, assumptions or estimates used are for example only. There may be differences between projected and actual results, and those differences may be material. The Property may be withdrawn without notice. Neither Owner nor JLL accepts any liability for any loss or damage suffered by any party resulting from reliance on this information. If the recipient of this information has signed a confidentiality agreement regarding this matter, this information is subject to the terms of that agreement. ©2022. Jones Lang LaSalle IP, Inc. All rights reserved.