



For lease

1201 N 50th St., Tampa, FL 33610

± 2.0 acres of industrial outdoor storage

 **JLL** SEE A BRIGHTER WAY

1201 N 50th St., Tampa, FL

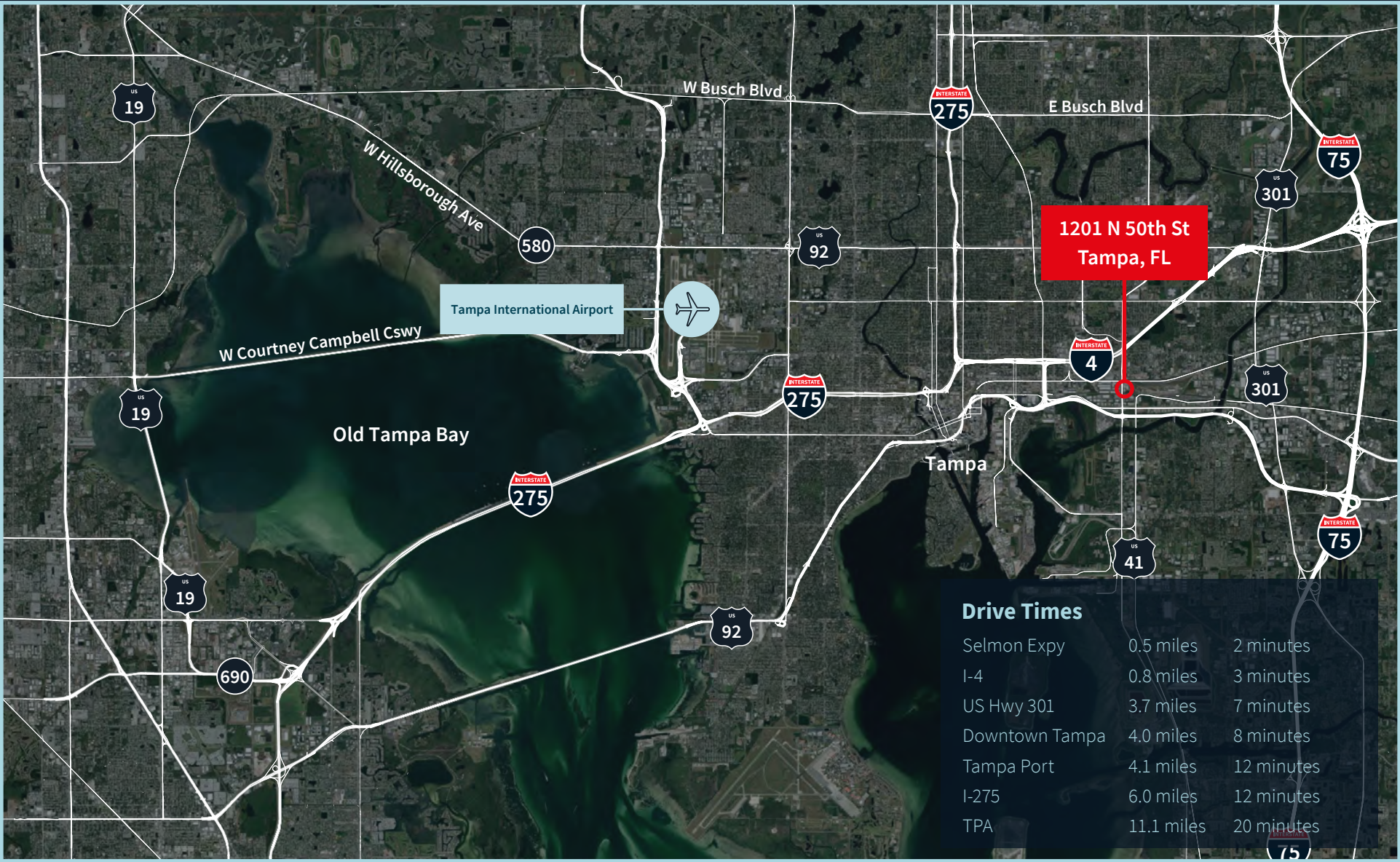
Highlights

Available	October 1, 2025
Acres	± 2.0
Warehouse SF	± 1,600 total
Office SF	± 150
Zoning	IH - Industrial Heavy
Grade level doors	One (1)
Warehouse clear height	18'
Site features	<ul style="list-style-type: none">- Full fenced, paved, and lit- Two (2) access points- Office pod- Small warehouse- Bathroom in warehouse- Visibility on 50th St



1201 N 50th St., Tampa, FL

Access Map



Contact:**Harrison Pithers***Associate*

+1 813 610 0239

harrison.pithers@jll.com

Pete Cecora, SIOR*Executive Managing Director*

+1 813 387 1297

peter.cecora@jll.com