



49,680 s.f. - 125,350 s.f.
Available Immediately

Sublease through May 31, 2030

**ELIGIBLE
ALTERNATIVE
FRAMEWORK
FOREIGN
TRADE ZONE
(FTZ 74)**



4601 Curtis Ave, Suite 100, Baltimore, MD 21226

Southside Logistics Center 2



Ryan Burrows

443 452 1514

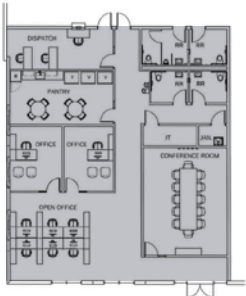
ryan.burrows@jll.com

Greg Ferraro

443 451 2618

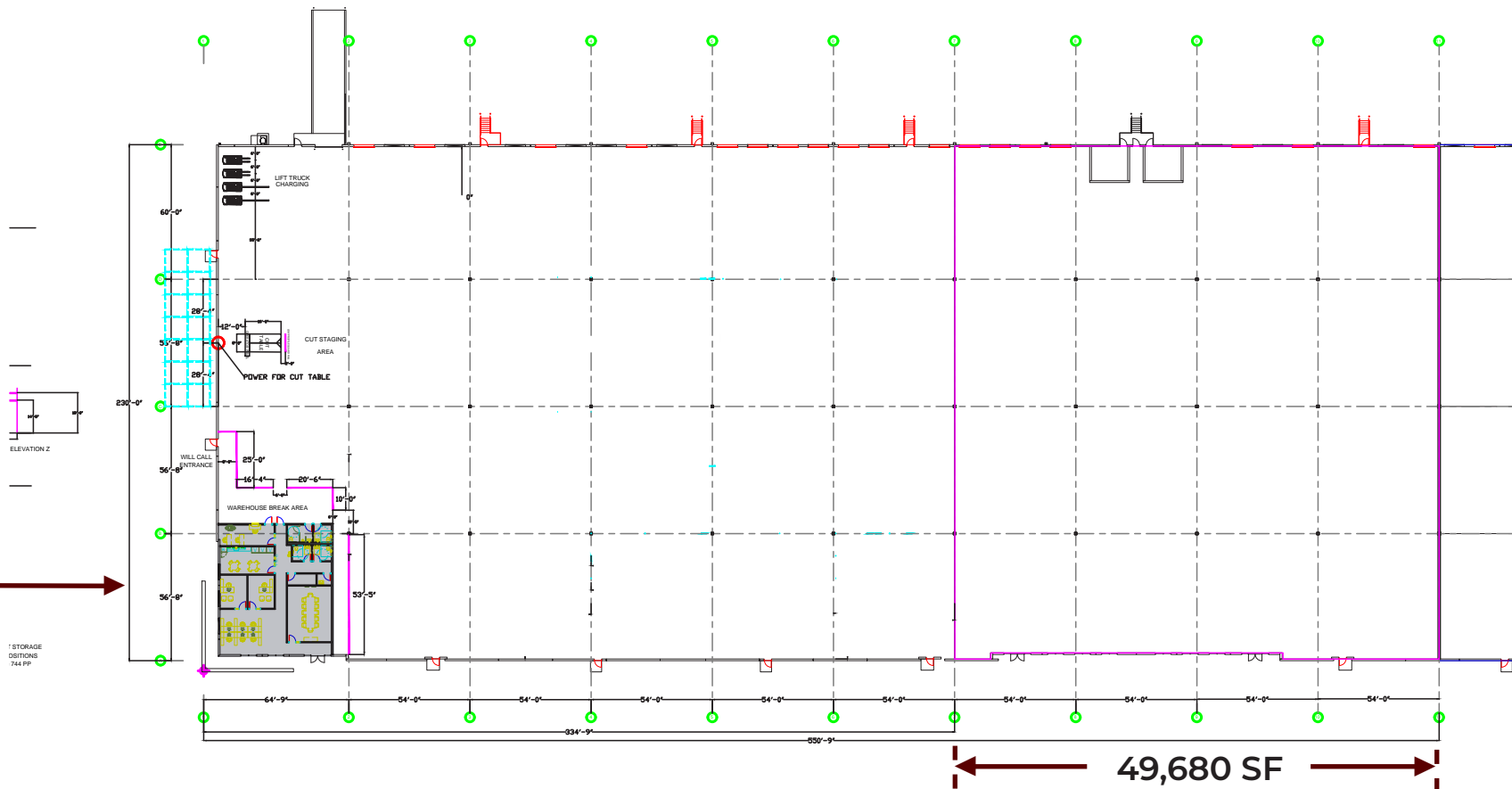
greg.ferraro@jll.com

Office

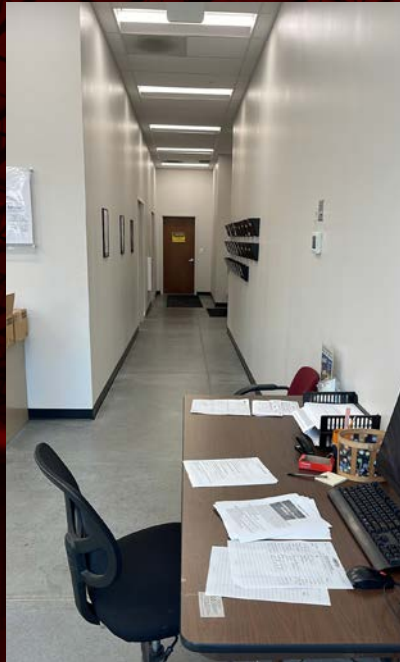


Overview

- 49,680 – 125,350 SF
- Aggressive terms
- 2,800 SF existing office
- 36' clear height
- LED Warehouse Lighting with motion sensors
- 28 Docks with dock lights and bollards (14 equipped with pit levelers and seals)
- 1 oversized drive-in
- 4 - Forklift charging stations
- Secured truck court and parking areas with automatic gates
- 20-45 trailer drops (overflow available upon request)

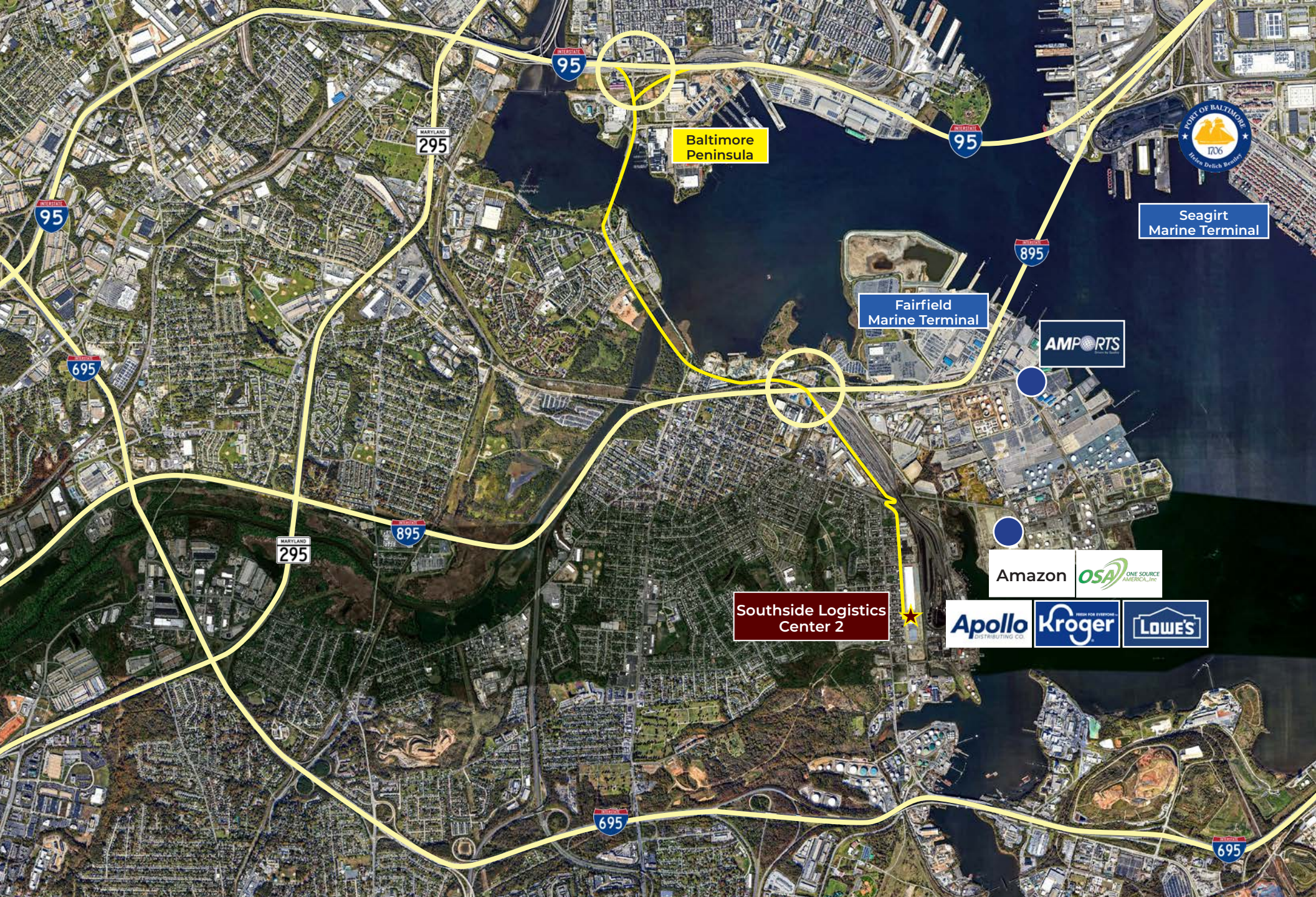


Property Summary



Property





Location

1.4 miles
to I-895

4 miles
to I-95

12 miles
to Baltimore Washington
International Airport

43 miles
to Washington DC

104 miles
to Philadelphia, PA





For more information, please contact:

Although information has been obtained from sources deemed reliable, neither Owner nor JLL makes any guarantees, warranties or representations, express or implied, as to the completeness or accuracy as to the information contained herein. Any projections, opinions, assumptions or estimates used are for example only. There may be differences between projected and actual results, and those differences may be material. The Property may be withdrawn without notice. Neither Owner nor JLL accepts any liability for any loss or damage suffered by any party resulting from reliance on this information. If the recipient of this information has signed a confidentiality agreement regarding this matter, this information is subject to the terms of that agreement. ©2021. Jones Lang LaSalle IP, Inc. All rights reserved.



Ryan Burrows

443 452 1514

ryan.burrows@jll.com

Greg Ferraro

443 451 2618

greg.ferraro@jll.com