


**CONSTRUCTION
UNDERWAY!**

See the progress! 



edgewoodlogisticscenter.com

Delivering Q4 2025

209,564 SF

1300 Business Center Way, Edgewood, MD



Ben Meisels
443.451.2614
ben.meisels@jll.com

Rob Maddux
443.931.3353
rob.maddux@jll.com

Site Plan



Edgewood Logistics Center

EDGEWOOD LOGISTICS CENTER
209,564 SF
37 DOCK DOORS
168 PARKING SPACES
43 TRAILER DROPS

209,564
Total SF

3,000
AMPS
of Power

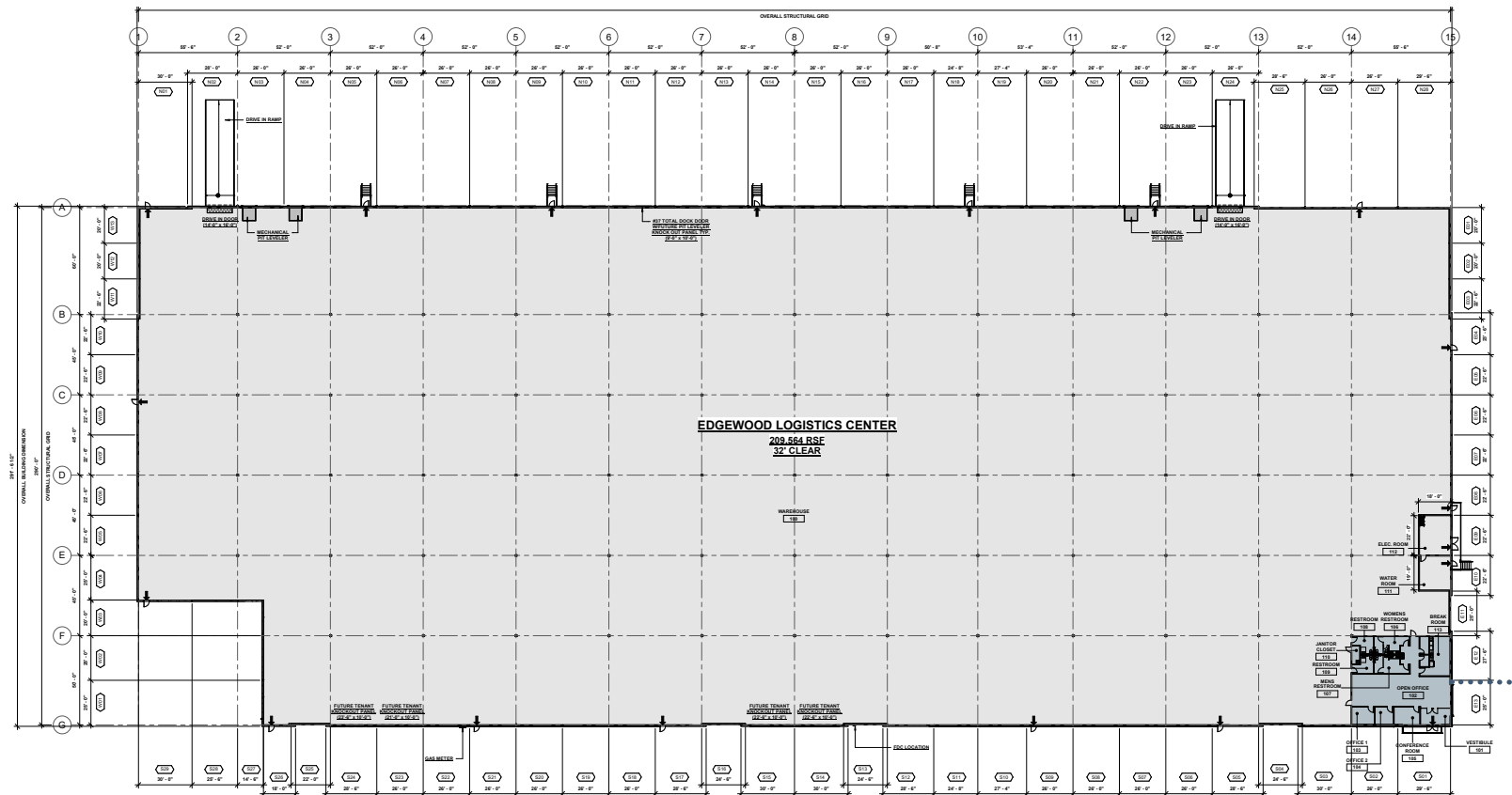
168
Parking
Spaces

43
Trailer
Parking

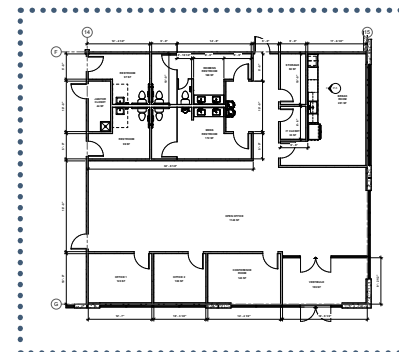
37
Dock
Doors



Floor Plan



Office
2,569 SF



Location Map



95 South

95 North

MARYLAND
152

95

Philadelphia Road

1 mile / 2 minutes
to I-95

Mountain Road

1300 Business Center Way

40

40

MARYLAND
152



Regional Map

1300 Business Center Way

25 miles

50 miles

75 miles

21 miles
to
Baltimore, MD

52 miles
to
Wilmington, DE

62 miles
to
Washington, D.C.

84 miles
to
Philadelphia, PA

170 miles
to
New York, NY



For more information, please contact:

Ben Meisels
443.451.2614
ben.meisels@jll.com

Rob Maddux
443.931.3353
rob.maddux@jll.com



Although information has been obtained from sources deemed reliable, neither Owner nor JLL makes any guarantees, warranties or representations, express or implied, as to the completeness or accuracy as to the information contained herein. Any projections, opinions, assumptions or estimates used are for example only. There may be differences between projected and actual results, and those differences may be material. The Property may be withdrawn without notice. Neither Owner nor JLL accepts any liability for any loss or damage suffered by any party resulting from reliance on this information. If the recipient of this information has signed a confidentiality agreement regarding this matter, this information is subject to the terms of that agreement. ©2021. Jones Lang LaSalle IP, Inc. All rights reserved.

JLL Baltimore Industrial