

For sale

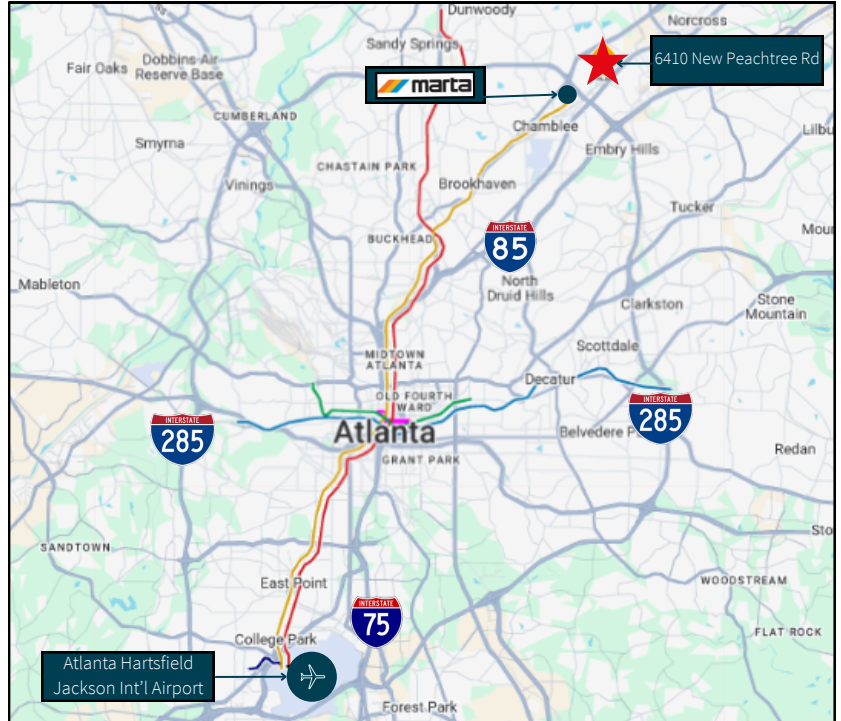
Prime infill warehouse with outside storage

6410 New Peachtree Rd
Doraville, GA 30340

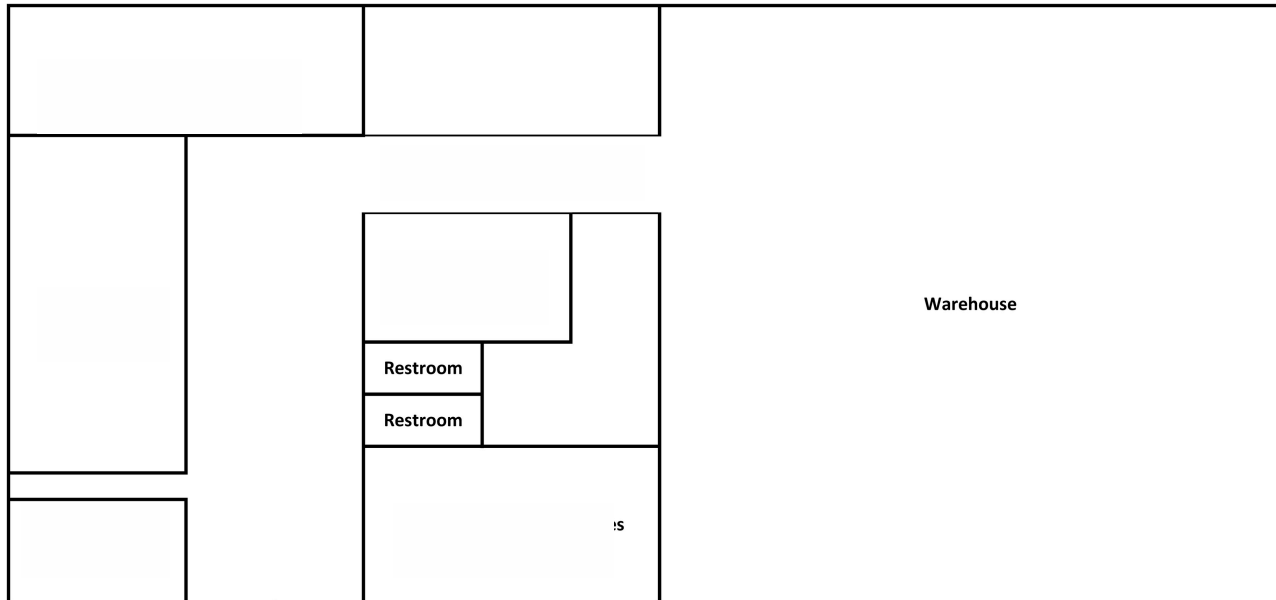
6410 New Peachtree Rd Doraville, GA 30340

Property specifications

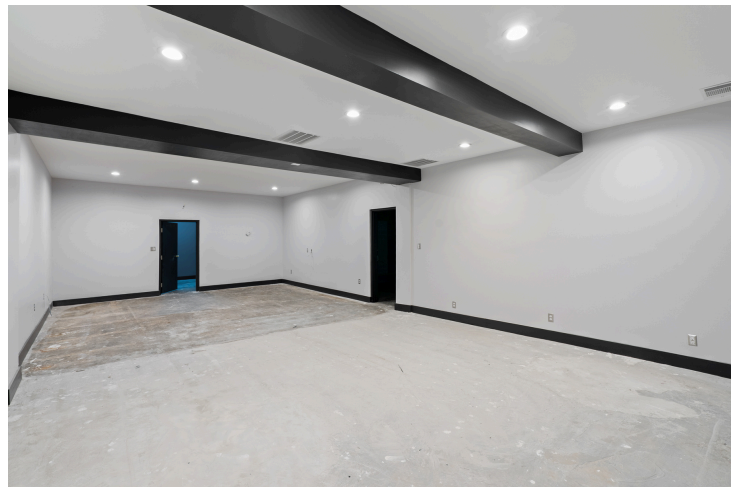
- Building size +/- 33,840 SF available
- Office size +/- 9,179 SF
- Clear height 18' - 21'
- Dock doors - Six(6) - four(4) with levelers
- Drive-in door - One (1) - 12'W x 16'H grade level
- Distance to I-285 - 0.7 Miles
- Distance to I-85 - 3.3 Miles
- Distance to MARTA - 1.1 Miles
- Distance to Hartsfield Jackson Atlanta Int'l Airport - 25.2 Miles
- Robust surrounding amenity base



Floorplan



- Total Warehouse Building Sq/Ft is 33,840



6410 New Peachtree Rd
Doraville, GA 30340



Ray Dankberg, SIOR
Executive Vice President
ray.dankberg@jll.com
mobile: +1 404 291 7127

[jll.com](https://www.jll.com)

Although information has been obtained from sources deemed reliable, JLL does not make any guarantees, warranties or representations, express or implied, as to the completeness or accuracy as to the information contained herein. Any projections, opinions, assumptions or estimates used are for example only. There may be differences between projected and actual results, and those differences may be material. JLL does not accept any liability for any loss or damage suffered by any party resulting from reliance on this information. If the recipient of this information has signed a confidentiality agreement with JLL regarding this matter, this information is subject to the terms of that agreement. ©2025. Jones Lang LaSalle IP, Inc. All rights reserved.

Jones Lang LaSalle Americas, Inc. License #: CO508577000