

Warehouse / Distribution • ESFR

# 1733

**±38,988 SF  
FOR LEASE**

## MORGAN RD

Modesto • California



Jones Lang LaSalle Brokerage, Inc., CA Real Estate License #01856260

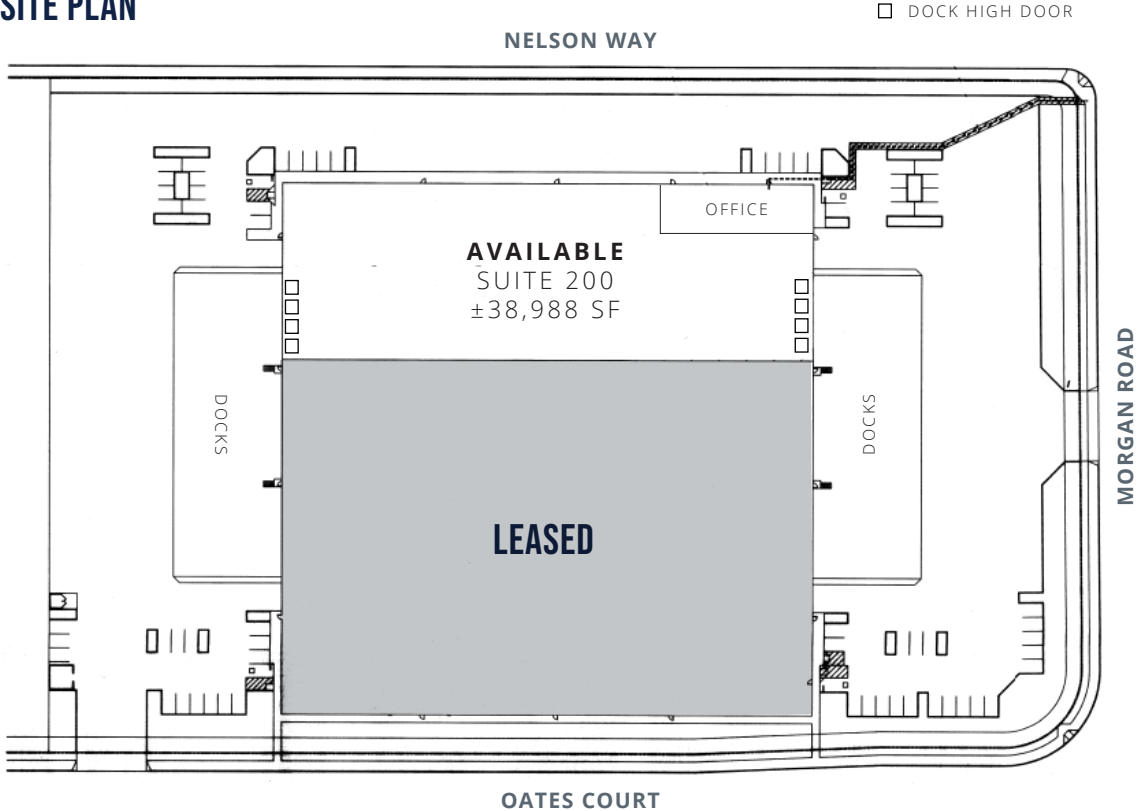
# PROPERTY FEATURES



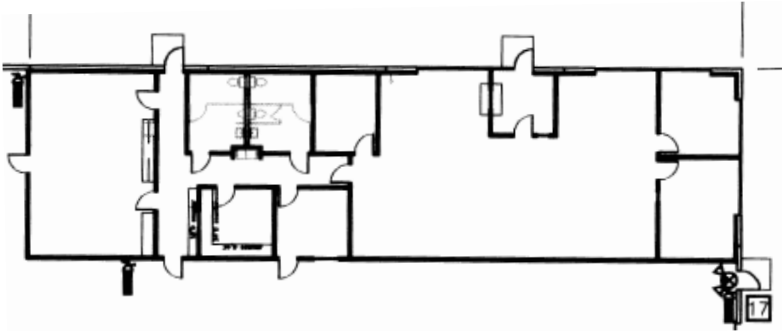
Total Building Size	±116,964 SF
Available	Suite 200   ±38,988 SF
Office	±3,488 SF
Clear Height	28' - 32'
Column Spacing	57' x 57'
Dock Doors	8 (cross dock) with levelers and seals
Grade Level Doors	2

Power	400 amps
Yard	Secured premises
Sprinklers	ESFR
Lighting	LED
Skylights	Yes
Construction	Concrete tilt-up
Lease Rate	Contact Broker

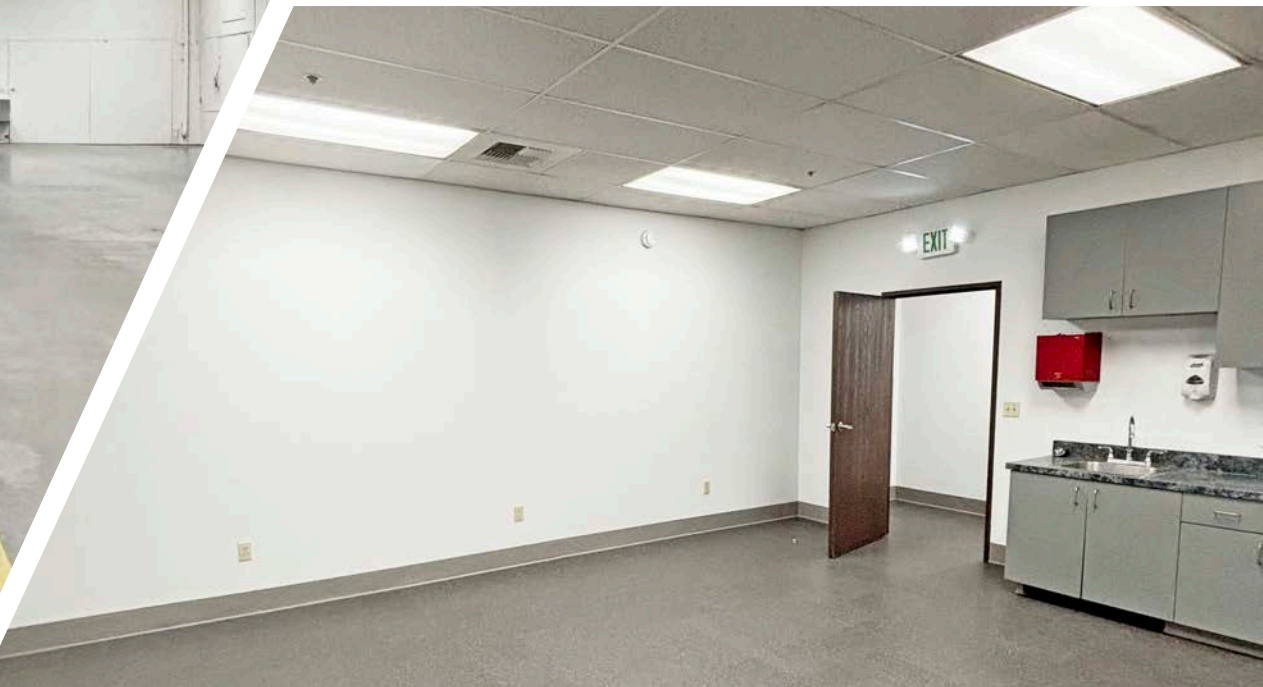
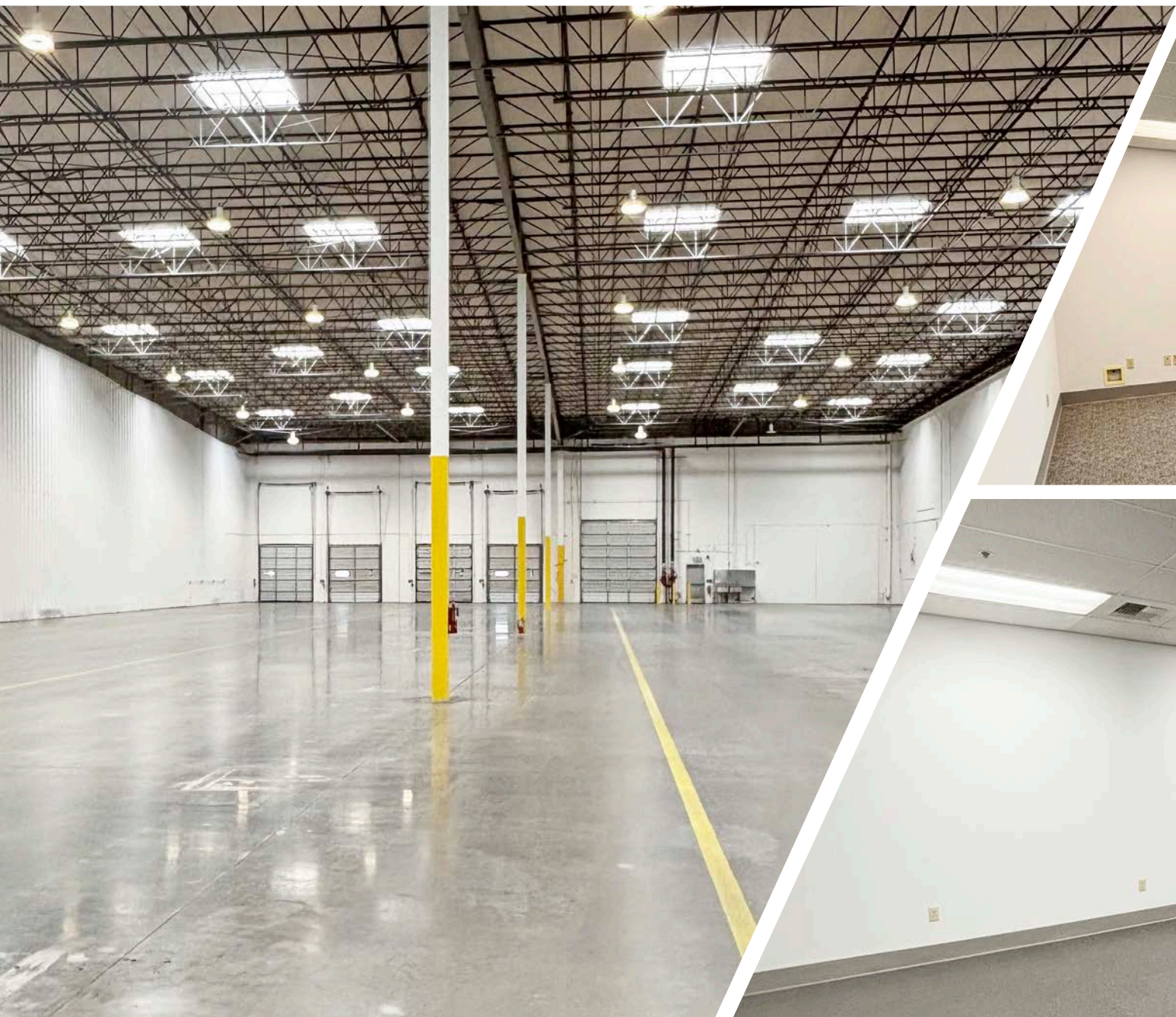
## 1733 MORGAN ROAD, MODESTO, CA SITE PLAN



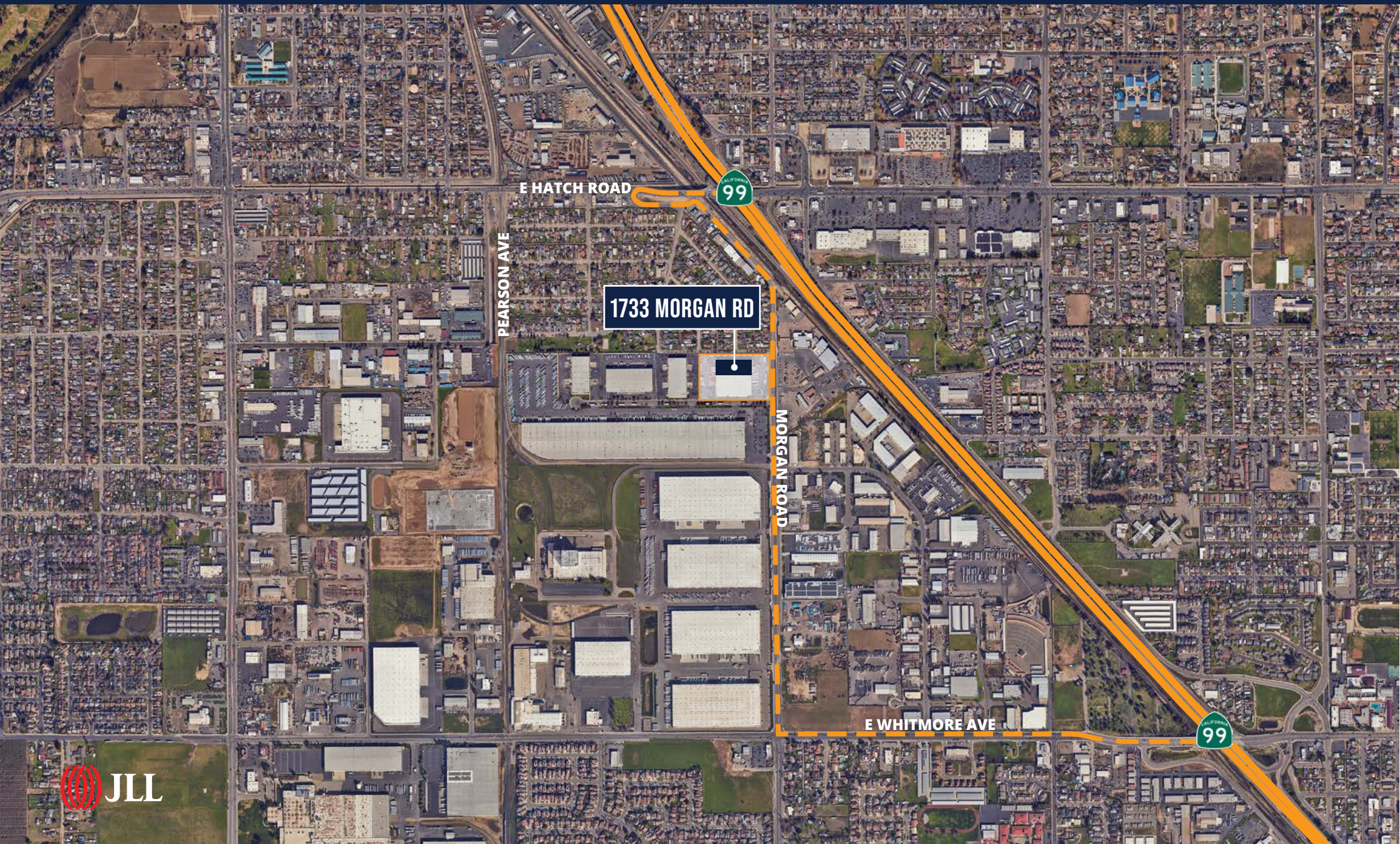
## SUITE 200 OFFICE FLOOR PLAN



# PROPERTY PHOTOS



# PROPERTY LOCATION & ACCESS



# 1733 MORGAN RD

## EXCLUSIVE BROKERS

### TIM MUSTIN

JLL | Managing Director  
tim.mustin@jll.com  
+1 209 390 1687  
RE License #01857876

### JOHN FONDALE, SIOR

JLL | Managing Director  
john.fondale@jll.com  
+1 209 390 1694  
RE License #01017415

### MICHAEL MATTER

JLL | Vice President  
michael.matter@jll.com  
+1 209 390 1702  
RE License #01435801

### MICHAEL REED

Buzz Oates | Asset Manager  
michaelreed@buzzoates.com  
+1 916 379 3859  
RE License #01477117



Although information has been obtained from sources deemed reliable, neither Owner nor JLL makes any guarantees, warranties or representations, express or implied, as to the completeness or accuracy as to the information contained herein. Any projections, opinions, assumptions or estimates used are for example only. There may be differences between projected and actual results, and those differences may be material. The Property may be withdrawn without notice. Neither Owner nor JLL accepts any liability for any loss or damage suffered by any party resulting from reliance on this information. If the recipient of this information has signed a confidentiality agreement regarding this matter, this information is subject to the terms of that agreement. ©2025. Jones Lang LaSalle IP, Inc. All rights reserved.