



For lease or sale

3131 Woodcreek Drive, Downers Grove, IL
72,929 SF

Building Specs



Total Building SF: 72,929 SF
(Total Available)

Office SF: 25,350 SF Total
(12,000 SF
1st and 2nd floor)

Test Kitchens: 6 on 2nd floor

Year Built/Expansion: 1990 | 2008

Loading: 2 dock doors with
packages,
1 unfinished door

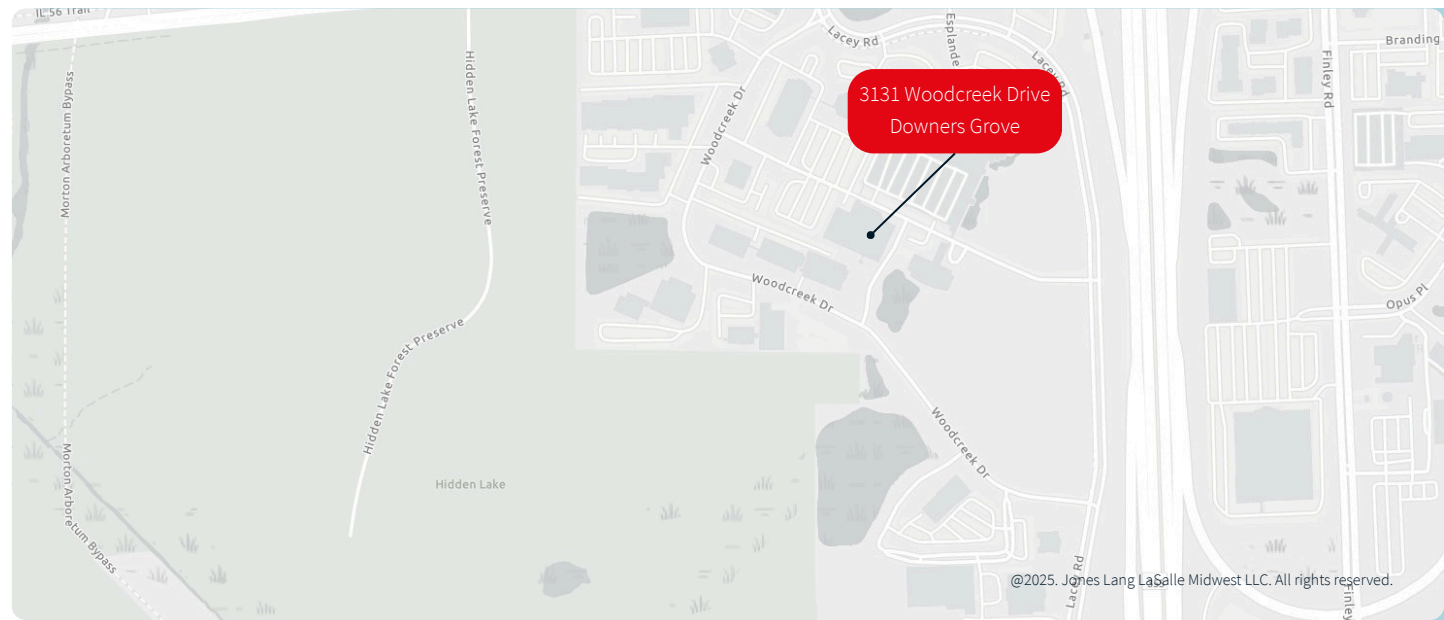
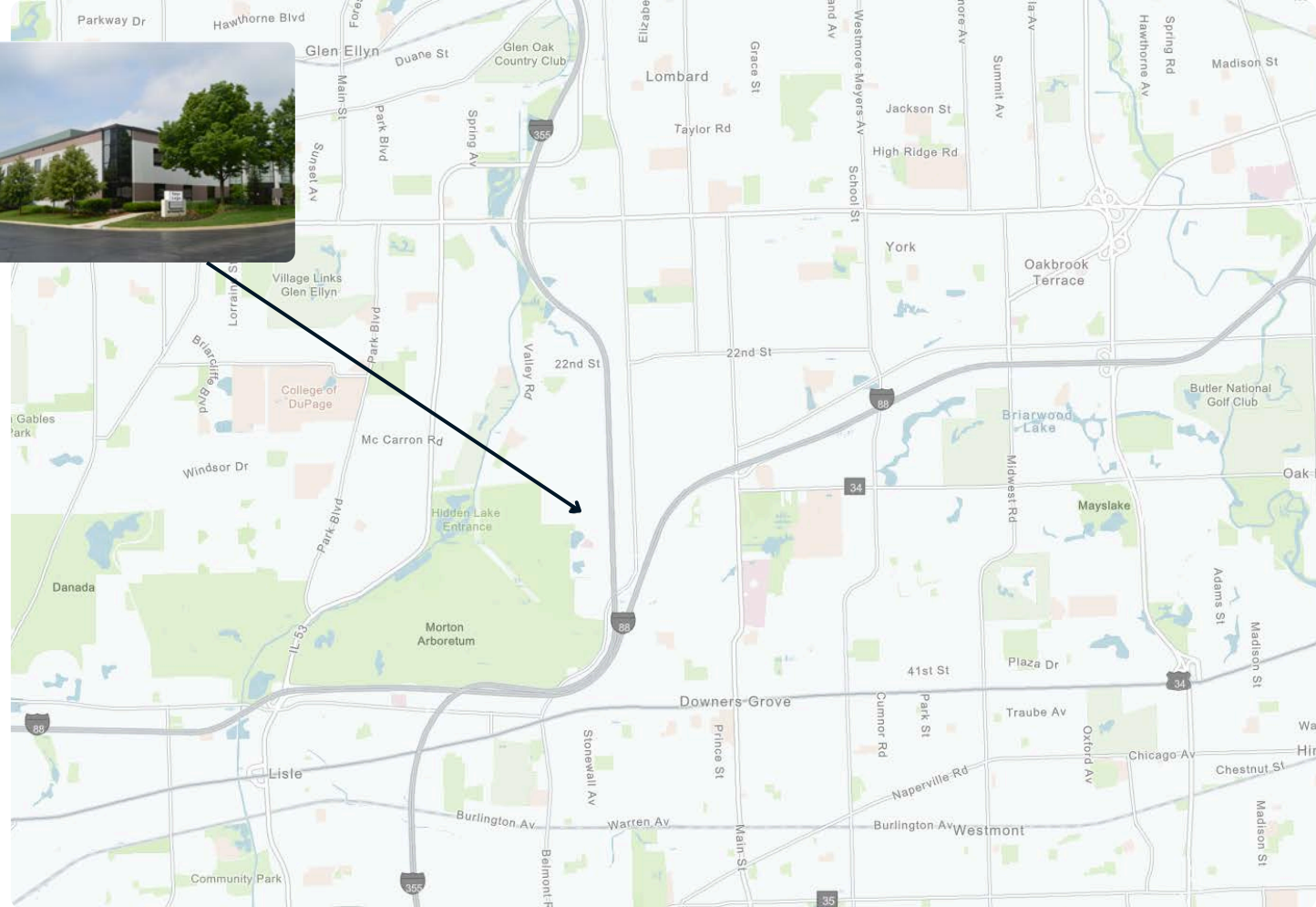
Power: Ample

Clear Height: 28'

Sprinkler: Wet

Parking: Ample

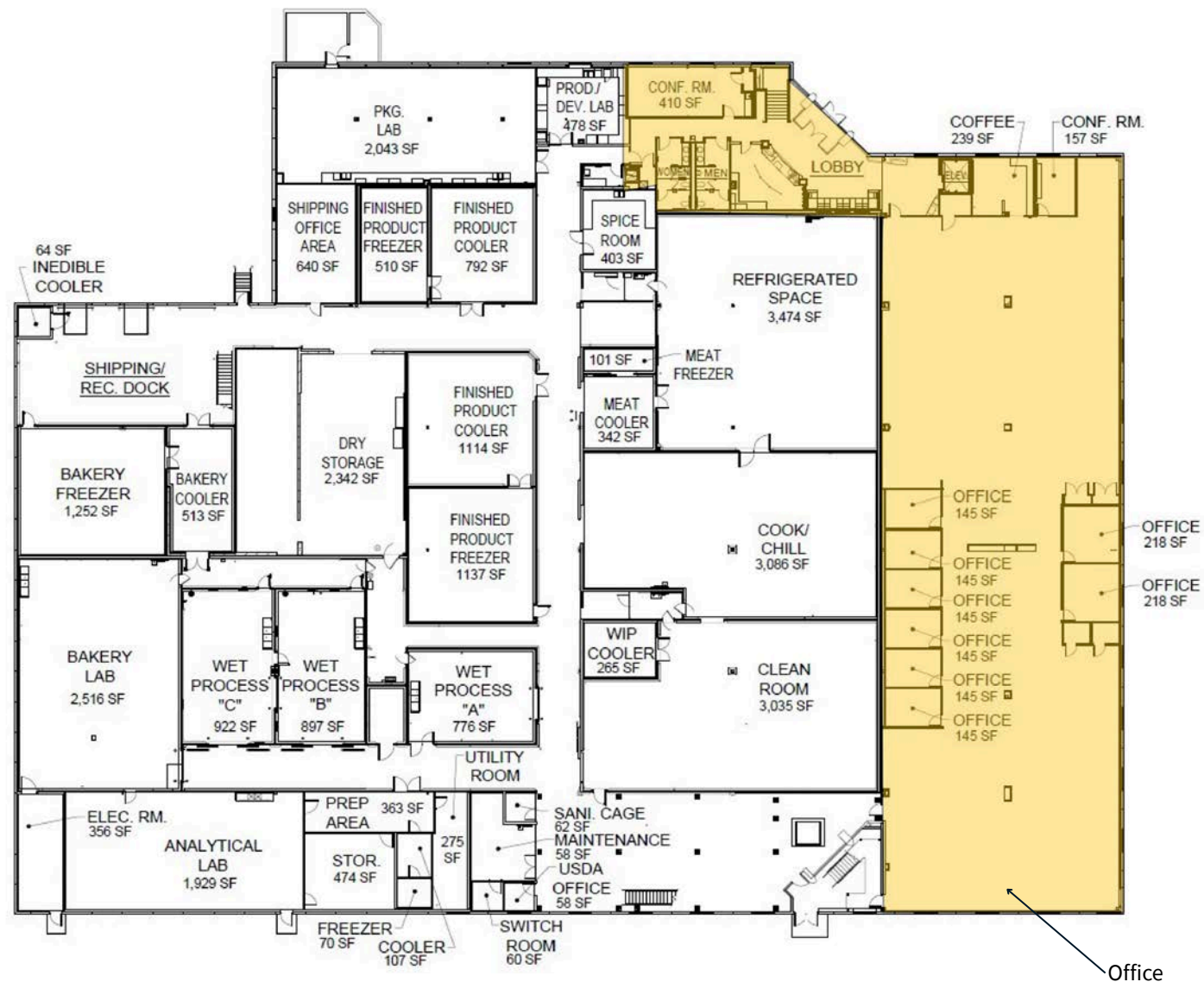
Zoning: Office, Research,
Manufacturing



3131 Woodcreek Road

1st Floor

36,465 SF

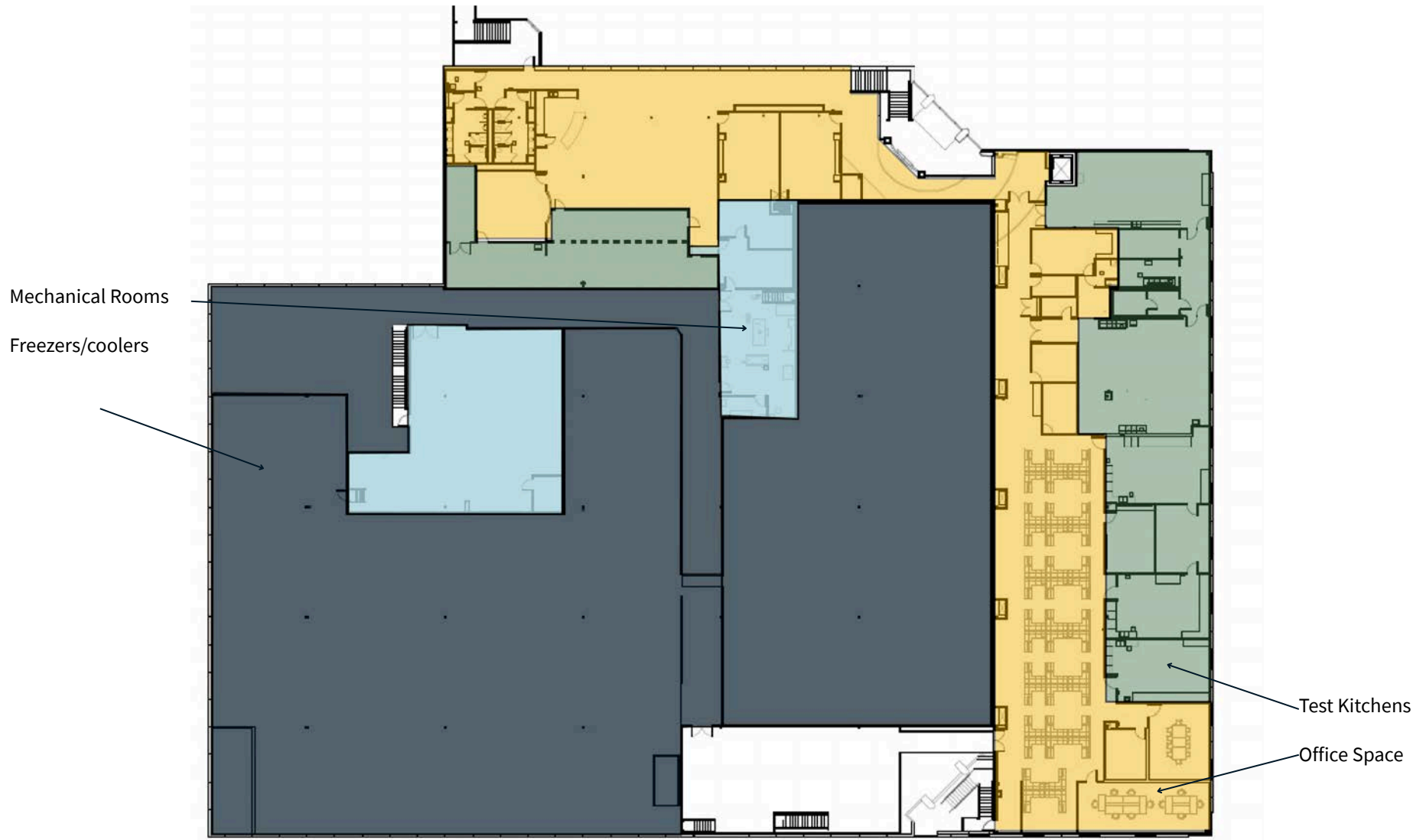


3131 Woodcreek Road

2nd Floor

36,464 SF

11,000 SF | 2nd Floor Office



Thank you

About JLL

For over 200 years, JLL (NYSE: JLL), a leading global commercial real estate and investment management company, has helped clients buy, build, occupy, manage and invest in a variety of commercial, industrial, hotel, residential and retail properties. A Fortune 500® company with annual revenue of \$20.9 billion and operations in over 80 countries around the world, our more than 103,000 employees bring the power of a global platform combined with local expertise. Driven by our purpose to shape the future of real estate for a better world, we help our clients, people and communities SEE A BRIGHTER WAYSM. JLL is the brand name, and a registered trademark, of Jones Lang LaSalle Incorporated. For further information, visit jll.com.

Dan Svachula

Executive Vice President
Dan.Svachula@jll.com
+ 1 773 490 8555

Michael Connor

Senior Vice President
Michael.Connor@jll.com
+ 1 847 436 6662