

# Former Bank for Lease

2,630 SF with Drive-Thru

510 Main Street, Chester, NJ





# Property Overview & Demographics

## 510 Main Street, Chester, NJ

Introducing an exclusive opportunity in Chester, NJ - a sought-after location that seamlessly combines history and modernity. This former Fulton Bank branch is situated in the picturesque landscapes of Morris County, offering a strong local economy, affluent demographics, and a growing population. With its strategic proximity to major business centers and appeal as a tourist destination, this bank branch presents an exciting investment prospect to establish a prominent financial presence in Chester's vibrant community.

### Location

2,630 SF building with a three-lane drive-thru

0.62 acres

15 car parking spaces

Washington Turnpike: 12,590 VPD

### Financials

Asking price: Upon request

Taxes: \$29,652.49 (2024)

### Additional Information

Located in a B-2 zone  
[Click to view zoning information](#)

[Click to view Matterport](#)



	3 miles	5 miles	10 miles
Population	11,361	42,374	241,973
Med. HH income	\$159,728	\$150,341	\$117,348
Employees	5,400	14,078	103,922
Businesses	837	1,978	11,130

Source: ESRI, 2023

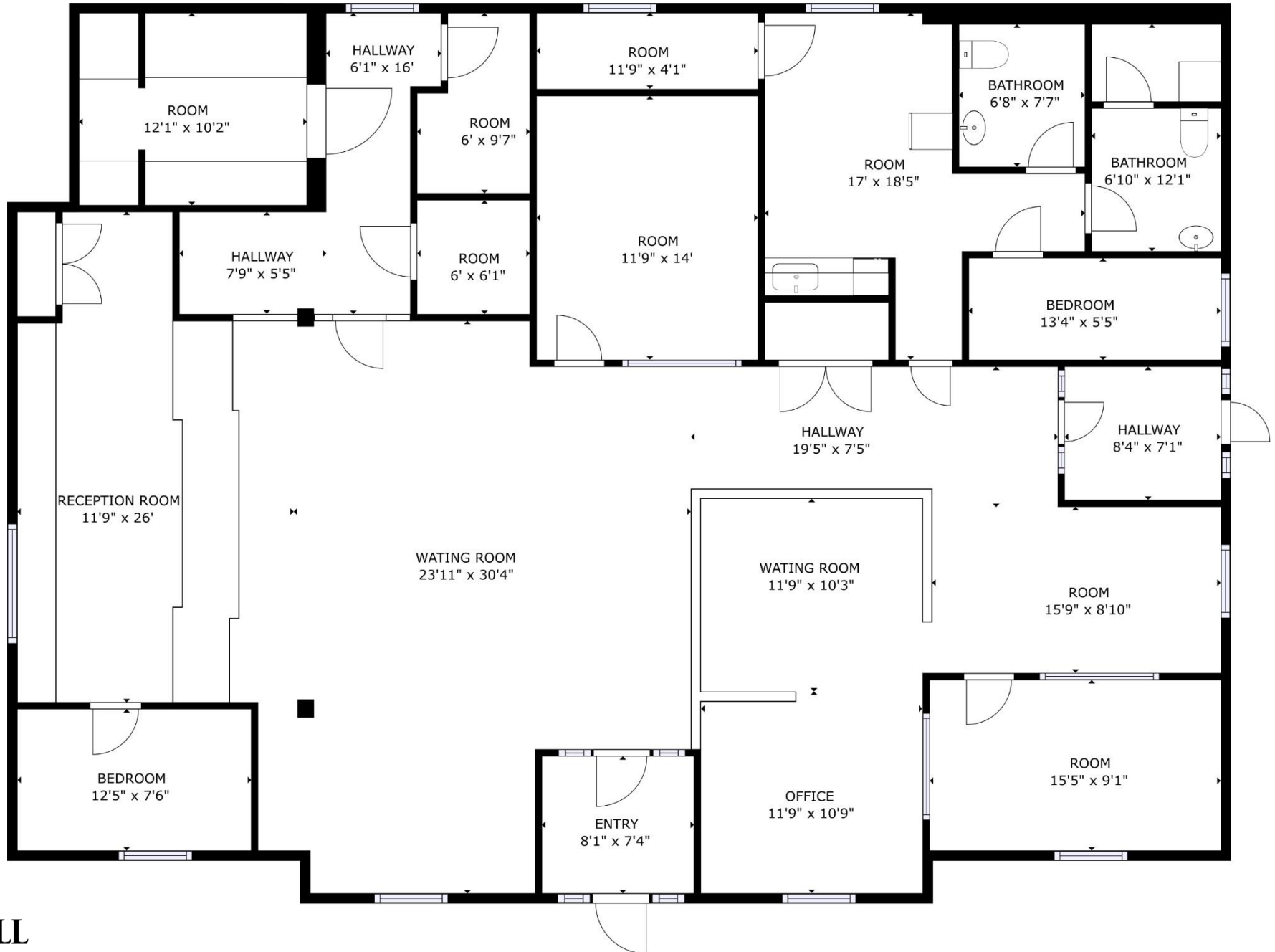


Additional images

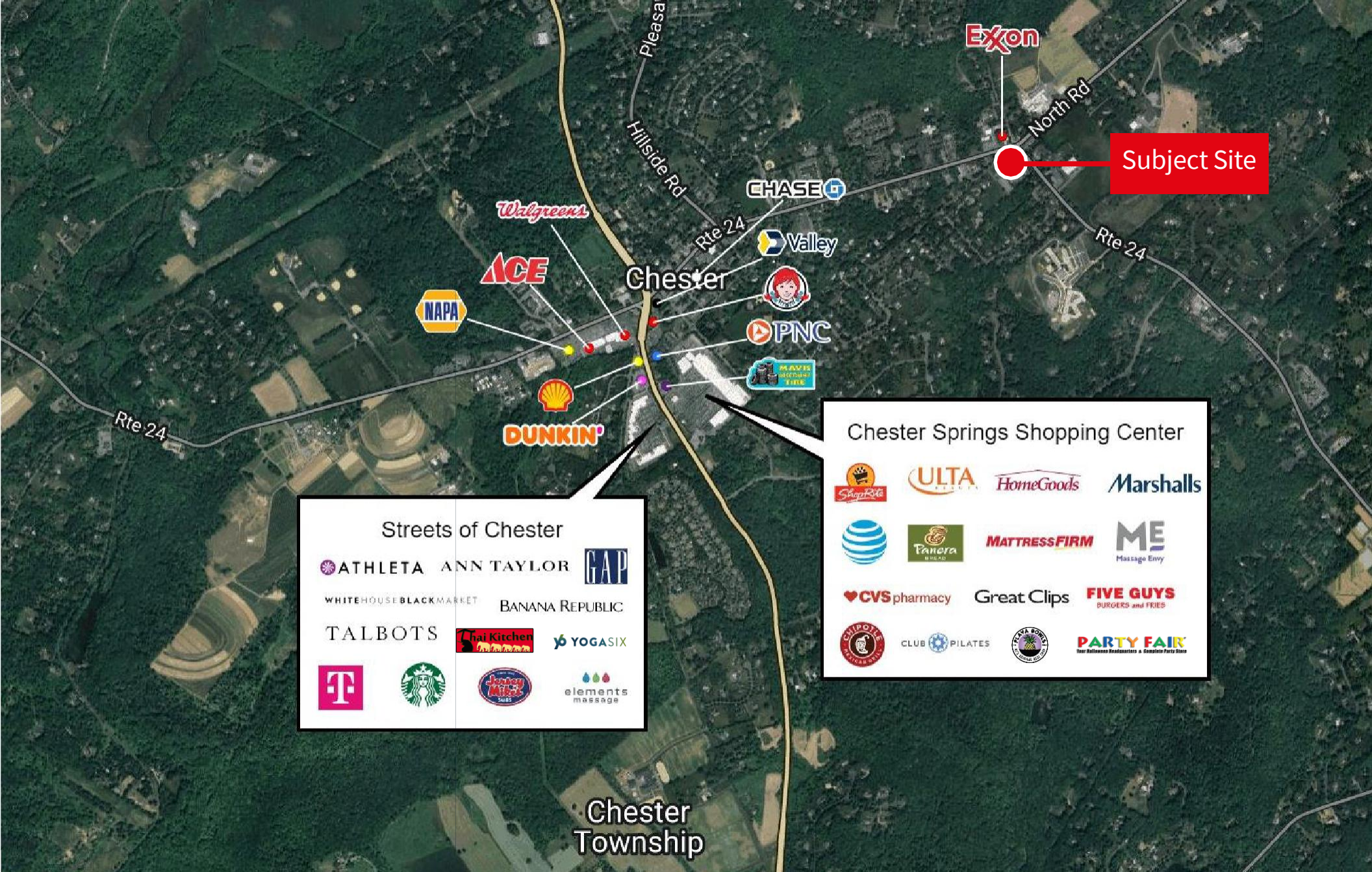




# Floor plan







**Craig Parcels**  
Senior Vice President  
[craig.parcels@jll.com](mailto:craig.parcels@jll.com)  
M: +1 201 618 7223

**David Townes**  
Managing Director  
[David.townes@jll.com](mailto:David.townes@jll.com)  
M: +1 917 993 5515

**Alana Friedman**  
Vice President  
[Alana.friedman@jll.com](mailto:Alana.friedman@jll.com)  
M: +1 201 741 0990

