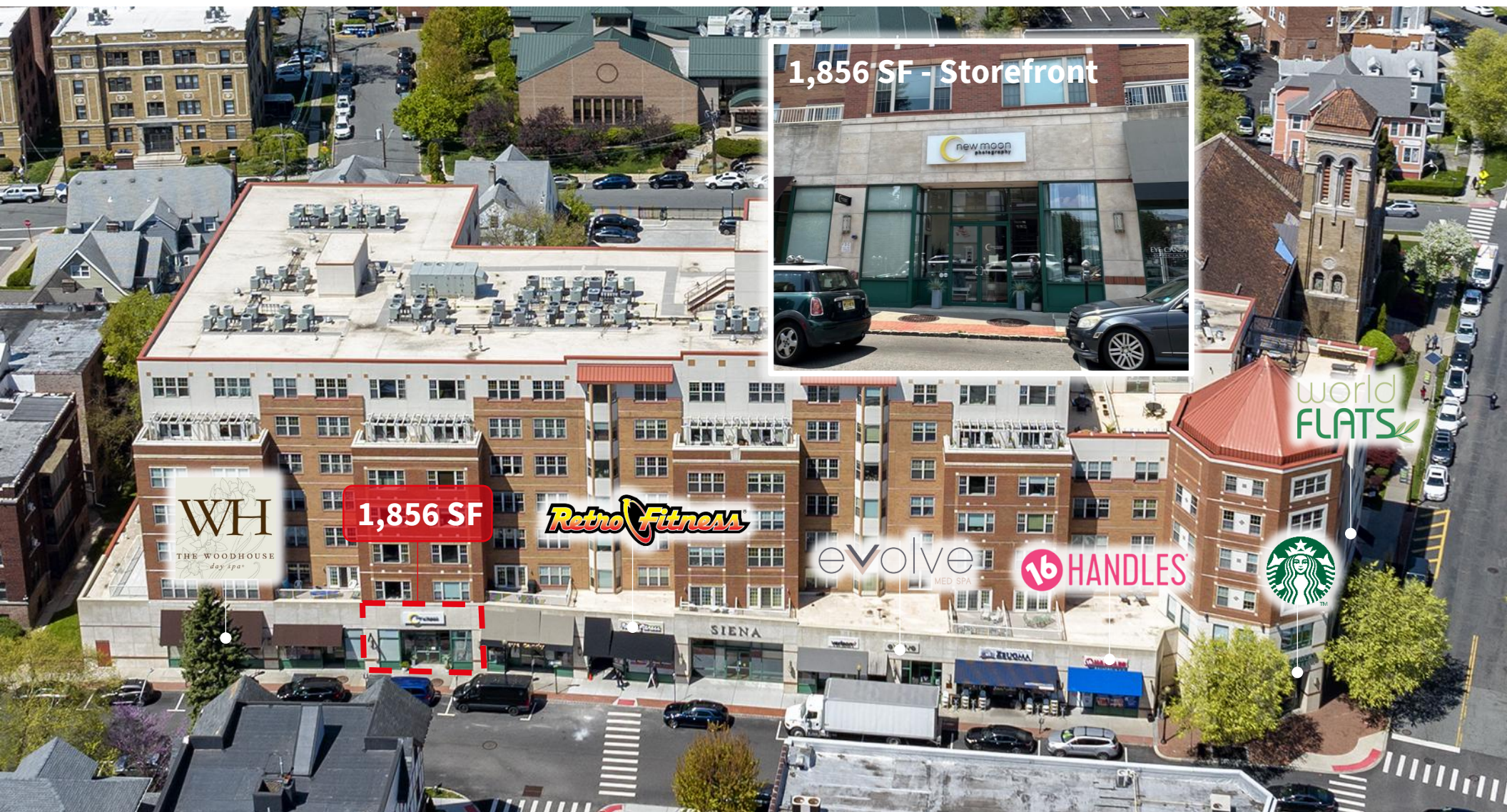


The Siena Montclair, NJ

54 S Park Street, Montclair, NJ



1,856 SF - Storefront

1,856 SF

1,856 SF Available for Lease

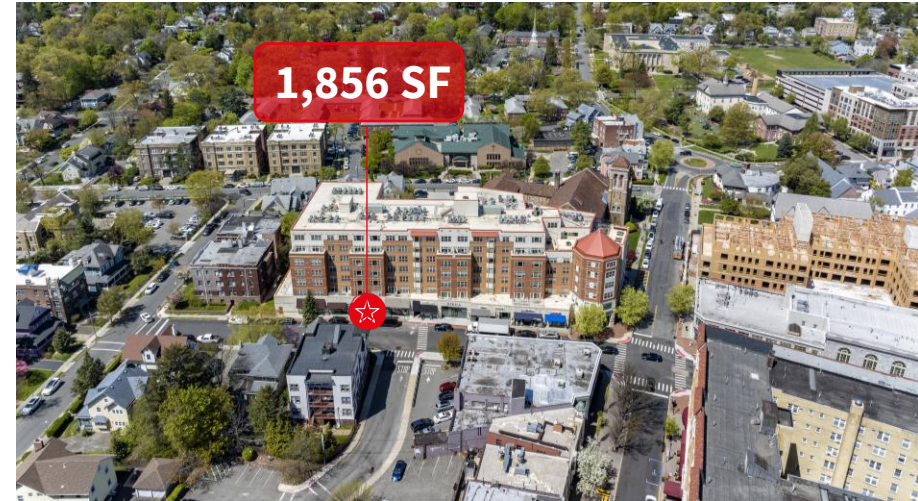
David Townes
Managing Director
+1 917 993 5515
david.townes@jll.com

Alana Friedman
Vice President
+1 201 741 0990
alana.friedman@jll.com



Property Location

- » Retail space at the epicenter of downtown Montclair's retail intersection of South Park Street and Church Street.
- » Steps away from The Crescent public parking deck with allocated validated parking
- » Located at the base of 101 Residential Unit building
- » Currently New Moon Photography Studio



Space Availability

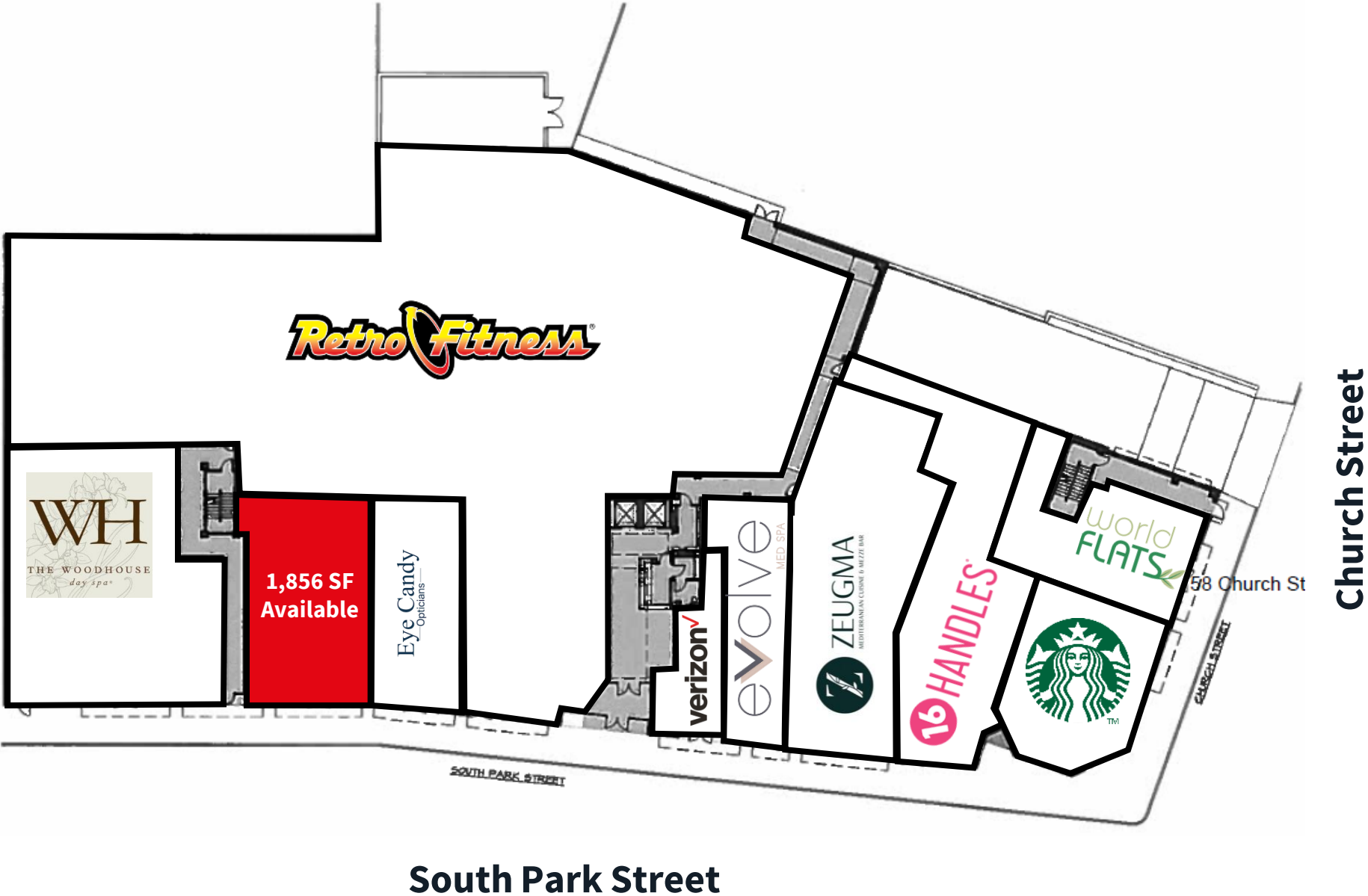
- » 1,856 SF Available
- » Available January 1, 2026
- » Asking Rent: Upon Request



Co-Tenants



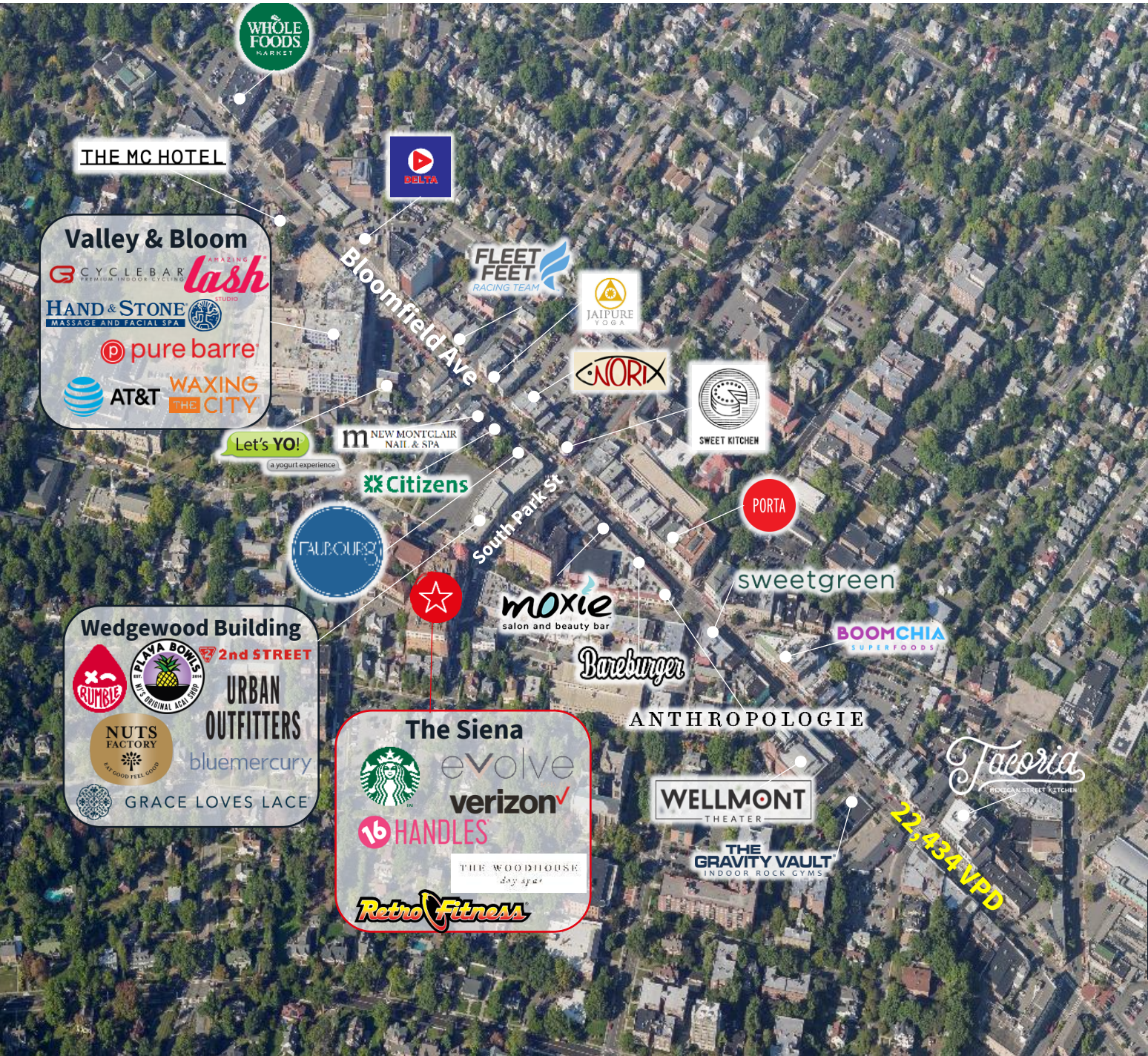
Site Plan



Neighborhood Aerial



Retail Aerial



Demographics



1 Mile	2 Mile	3 Mile
23,276	87,832	196,966

Population



1 Mile	2 Mile	3 Mile
\$118,112	\$110,002	\$95,069

Med. HH Income



1 Mile	2 Mile	3 Mile
14,053	29,863	62,218

Employees



1 Mile	2 Mile	3 Mile
2,414	5,010	9,269

Businesses