

# CENTURY SQUARE

## SUBLEASE

1501 4<sup>TH</sup> AVE SEATTLE, WA

**FLOOR 3**

**6,685 SF**

10.15.2026 LED

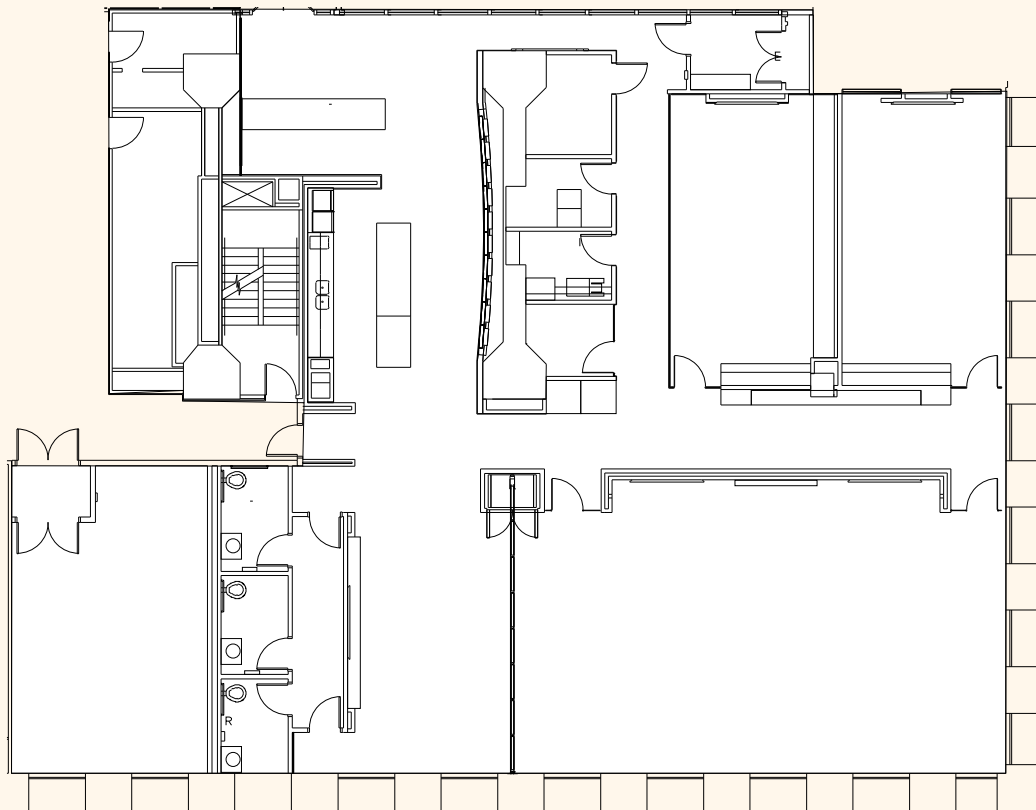


# FLOOR 3

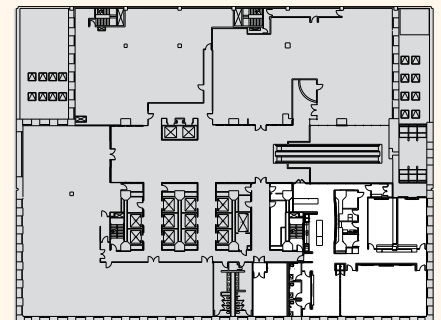
6,685 SF

TERM THROUGH 10.15.2026

PRICE: NEGOTIABLE



- 2 LARGE CONFERENCE ROOMS
- TRAINING ROOM
- RECEPTION
- BREAK AREA
- FOCUS ROOM
- AV STUDIO
- 2 PHONE ROOMS





# BUILDING FEATURES



FITNESS CENTER



TENANT LOUNGE



ON-SITE PARKING



EASY ACCESS TO TRANSIT  
LINES & RETAIL



ON-SITE SECURITY AND  
PROPERTY MANAGEMENT



UPGRADED LOBBY





# CENTURY SQUARE

SUBLEASE

FLOOR 3

6,685 SF

10.15.2026 LED

JOE GOWAN

+1 206 607 1738

joe.gowan@jll.com

CHARLOTTE EVANS

+1 206 607 1720

charlotte.evans@jll.com



Although information has been obtained from sources deemed reliable, neither Owner nor JLL makes any guarantees, warranties or representations, express or implied, as to the completeness or accuracy as to the information contained herein. Any projections, opinions, assumptions or estimates used are for example only. There may be differences between projected and actual results, and those differences may be material. The Property may be withdrawn without notice. Neither Owner nor JLL accepts any liability for any loss or damage suffered by any party resulting from reliance on this information. If the recipient of this information has signed a confidentiality agreement regarding this matter, this information is subject to the terms of that agreement. © 2025 Jones Lang LaSalle IP, Inc. All rights reserved.