

1301 2ND AVE SEATTLE, WA

Russell Investments Center *Sublease*

FLOOR 12 | 45,167 SF

TERM THROUGH 5.15.2028



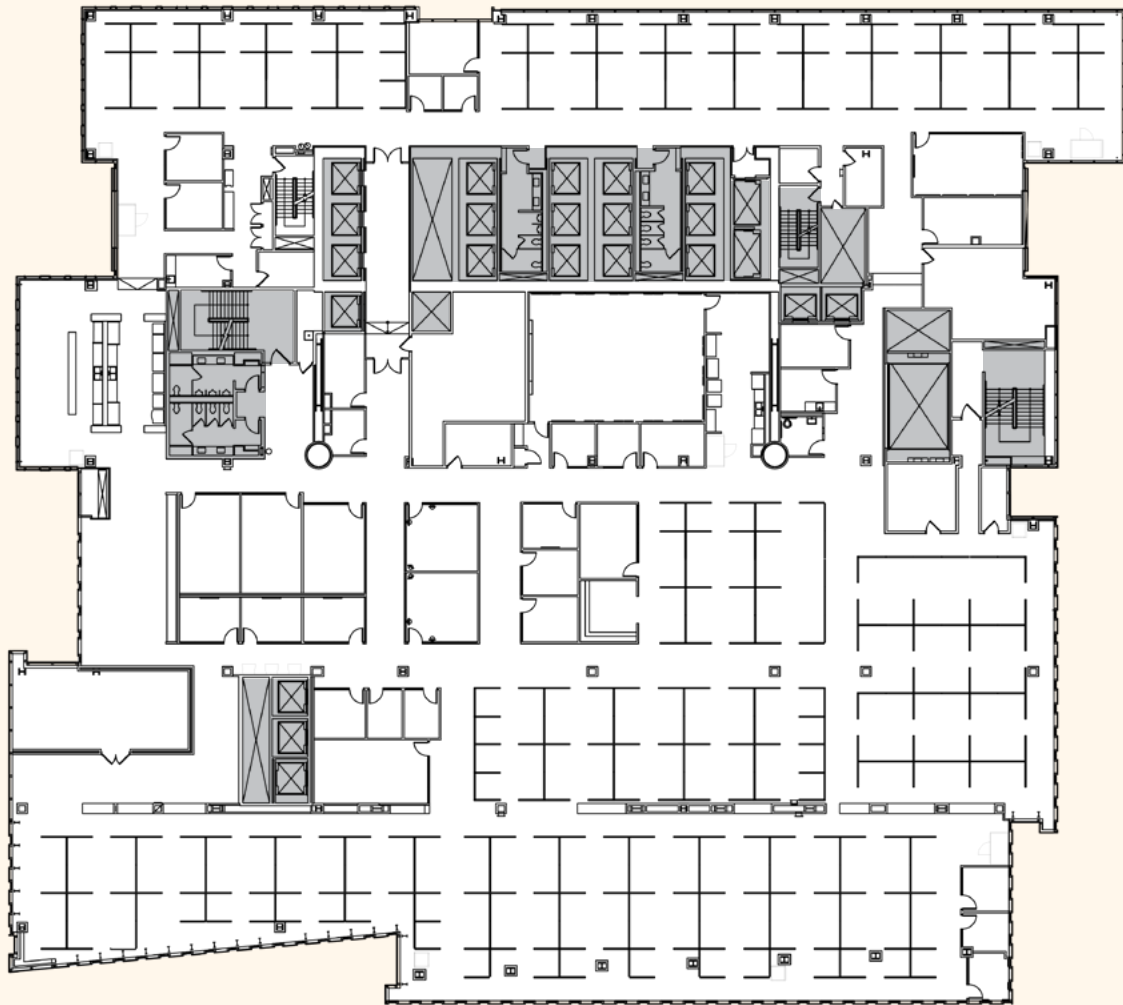
Floor 12

45,167 SF

TERM THROUGH 5.15.2028

FULL FLOOR OPPORTUNITY

PRICE: NEGOTIABLE



◀ N

- Conference rooms:
5 large, 7 medium, 3 small
- Training room
- Existing work stations
- Huddle rooms
- Break area
- Phone rooms & focus areas
- Two kitchens
- Mothers room
- Spiritual room



Project Highlights



TENANT FITNESS
CENTER



10K SF TENANT LOUNGE



ON-SITE PARKING WITH
EV CHARGING & BIKE
STORAGE



EASY ACCESS TO
MAJOR TRANSIT
LINES



23K SF LANDSCAPED
ROOFTOP DECK



DIRECT ACCESS TO THE
NEWLY REVITALIZED
WATERFRONT





Russell Investments Center *Sublease*

FLOOR 12 | 45,167 SF

TERM THROUGH 5.15.2028

JOE GOWAN
+1 206 607 1738
joe.gowan@jll.com

CHARLOTTE EVANS
+1 206 607 1720
charlotte.evans@jll.com



Although information has been obtained from sources deemed reliable, neither Owner nor JLL makes any guarantees, warranties or representations, express or implied, as to the completeness or accuracy as to the information contained herein. Any projections, opinions, assumptions or estimates used are for example only. There may be differences between projected and actual results, and those differences may be material. The Property may be withdrawn without notice. Neither Owner nor JLL accepts any liability for any loss or damage suffered by any party resulting from reliance on this information. If the recipient of this information has signed a confidentiality agreement regarding this matter, this information is subject to the terms of that agreement. © 2025 Jones Lang LaSalle IP, Inc. All rights reserved.