

For sublease

Millrock Park North

6440 Millrock Dr, Holladay, Utah

Suite 425 - 6,675 RSF



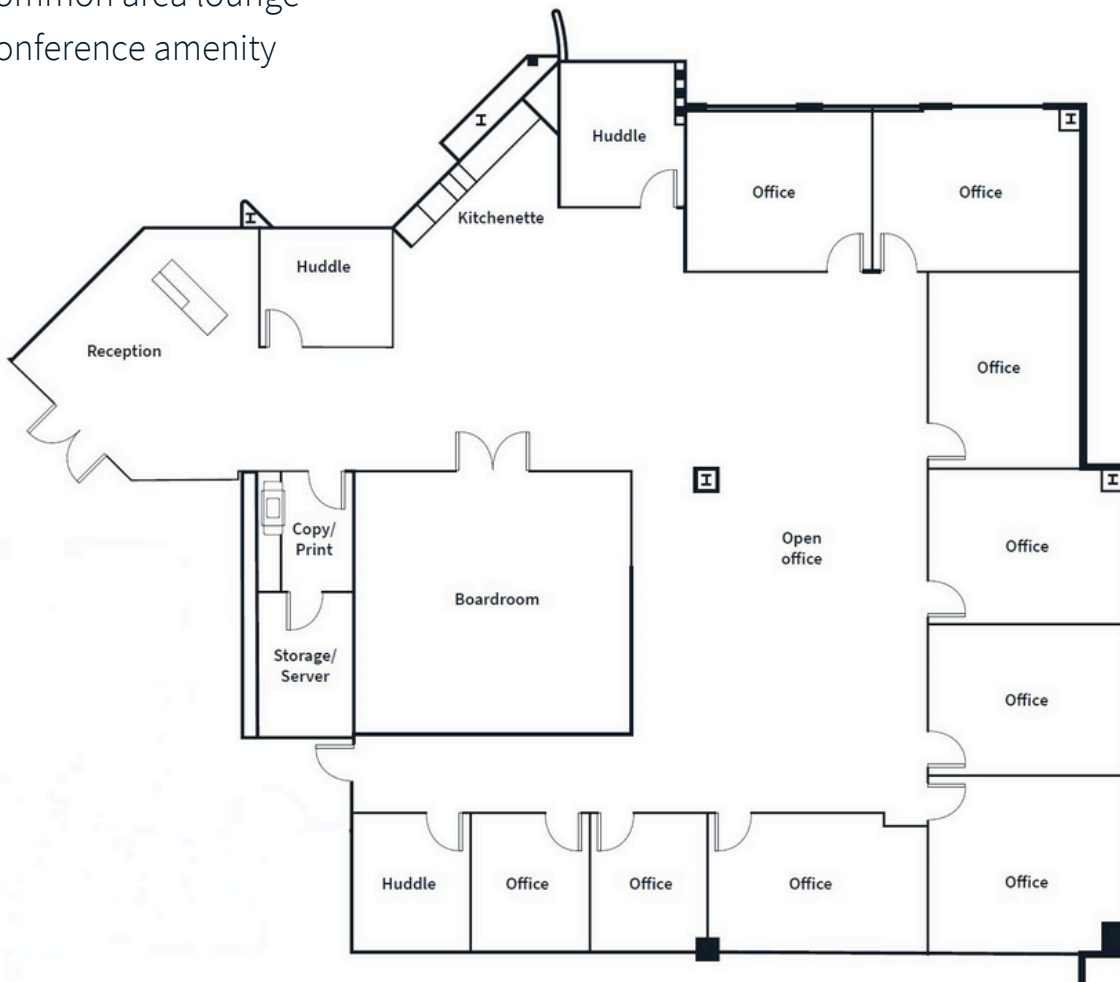
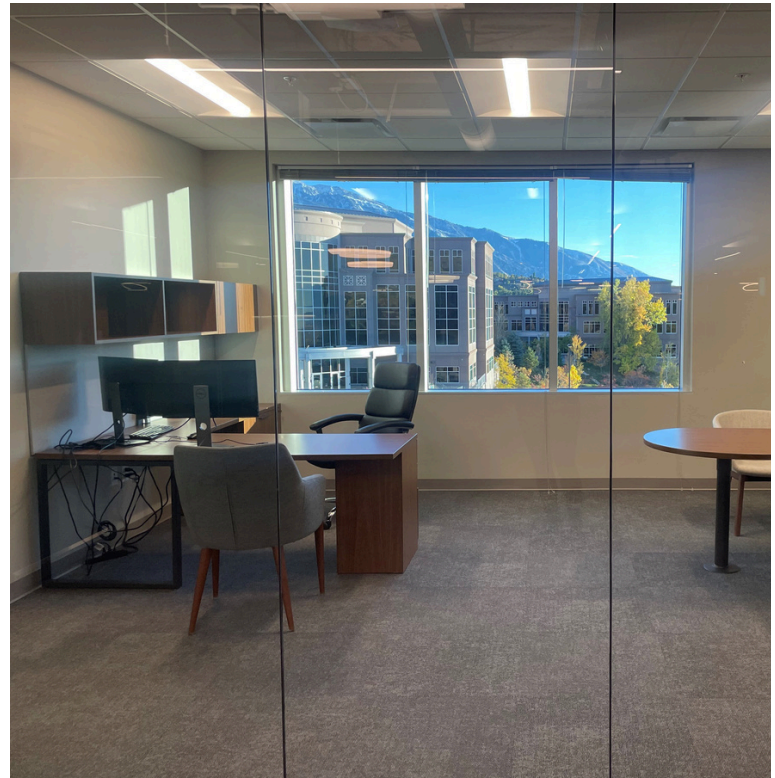
Suite 425 available for sublease

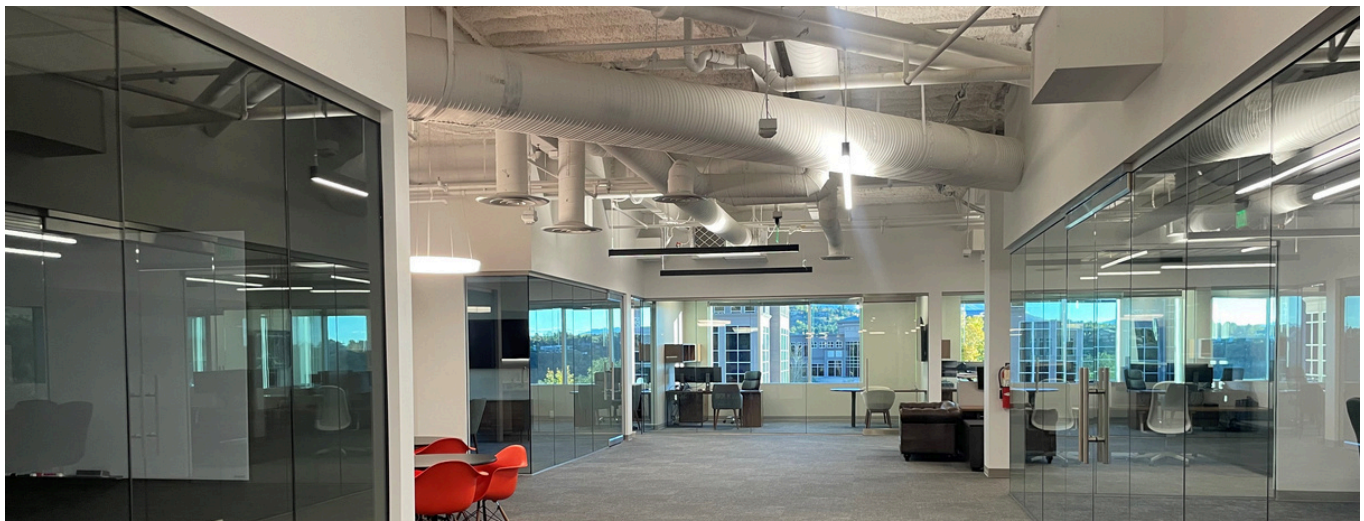
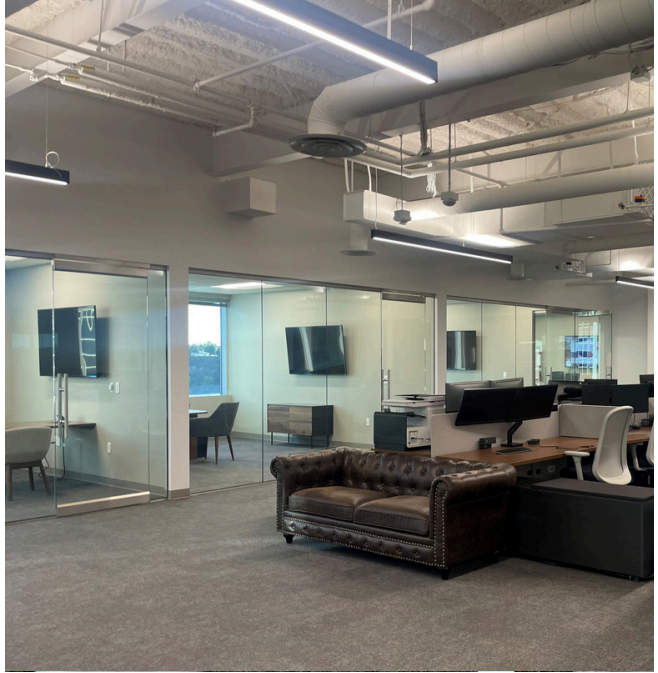
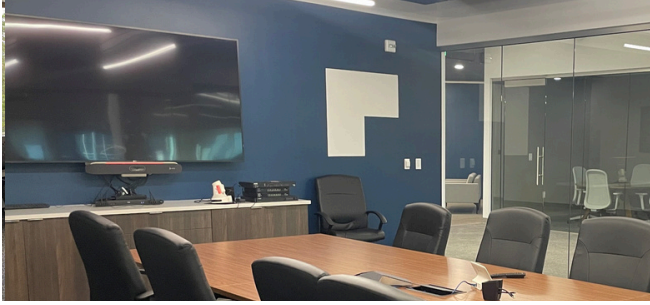
Space Highlights

- 6,675 RSF
- LXD: June 30, 2027
- \$24.00/SF Full Service
- High end glass offices on the perimeter
- Plug n Play
- East facing views
- Large boardroom
- Elevator presence with reception

Building Amenities

- Fitness center
- Covered parking
- Common area lounge
- Conference amenity







David Nixon

+1 801 456 9518

david.nixon@jll.com

Bronson Rawlins

+1 801 456 9513

bronson.rawlins@jll.com

Although information has been obtained from sources deemed reliable, neither Owner nor JLL makes any guarantees, warranties or representations, express or implied, as to the completeness or accuracy as to the information contained herein. Any projections, opinions, assumptions or estimates used are for example only. There may be differences between projected and actual results, and those differences may be material. The Property may be withdrawn without notice. Neither Owner nor JLL accepts any liability for any loss or damage suffered by any party resulting from reliance on this information. If the recipient of this information has signed a confidentiality agreement regarding this matter, this information is subject to the terms of that agreement. ©2024. Jones Lang LaSalle IP, Inc. All rights reserved.