

# Mendota Plaza

750 Highway 110, Mendota Heights, MN 55120



**Jack Whitcomb**

Associate

[jack.whitcomb@jll.com](mailto:jack.whitcomb@jll.com)

651 207 3498

**Zac Hoang**

Senior Vice President

[zac.hoang@jll.com](mailto:zac.hoang@jll.com)

612 250 4663





# Property overview & demographics

- Targeting restaurants, breweries, distilleries, and other retail uses
- Proposed brewery/distillery in endcap space
- Prominent pylon signage available
- Walgreens anchored retail center
- Adjacent to new 139-unit luxury apartment complex

## Site information

**Location:** 750 Highway 110,  
Mendota Heights, MN 55120

**Description:** 52,887 SF Retail Strip Center

## Availability

**Lot Size:** 1,227 - 8,488 SF

## Expenses

**CAM:** \$6.73

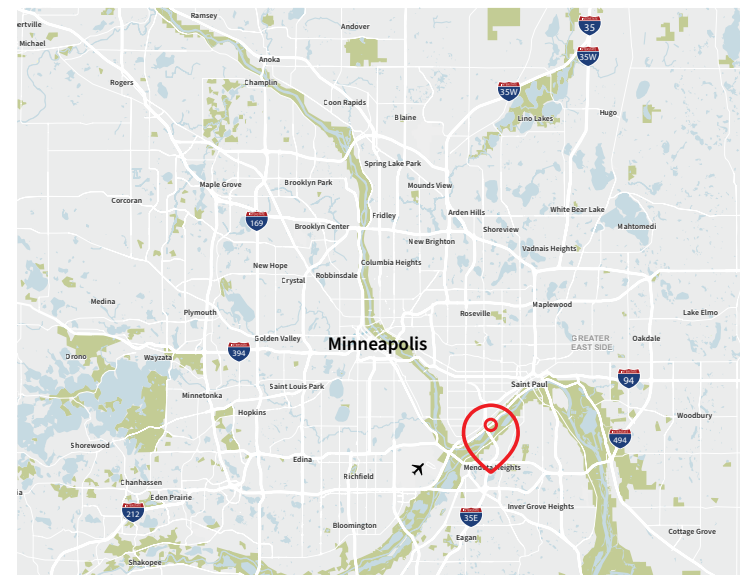
**RE Taxes:** \$2.62

**Total:** \$9.35

## Traffic counts

**Highway 62:** 33,110 vpd

**Dodd Road:** 11,855 vpd



## Nearby retailers

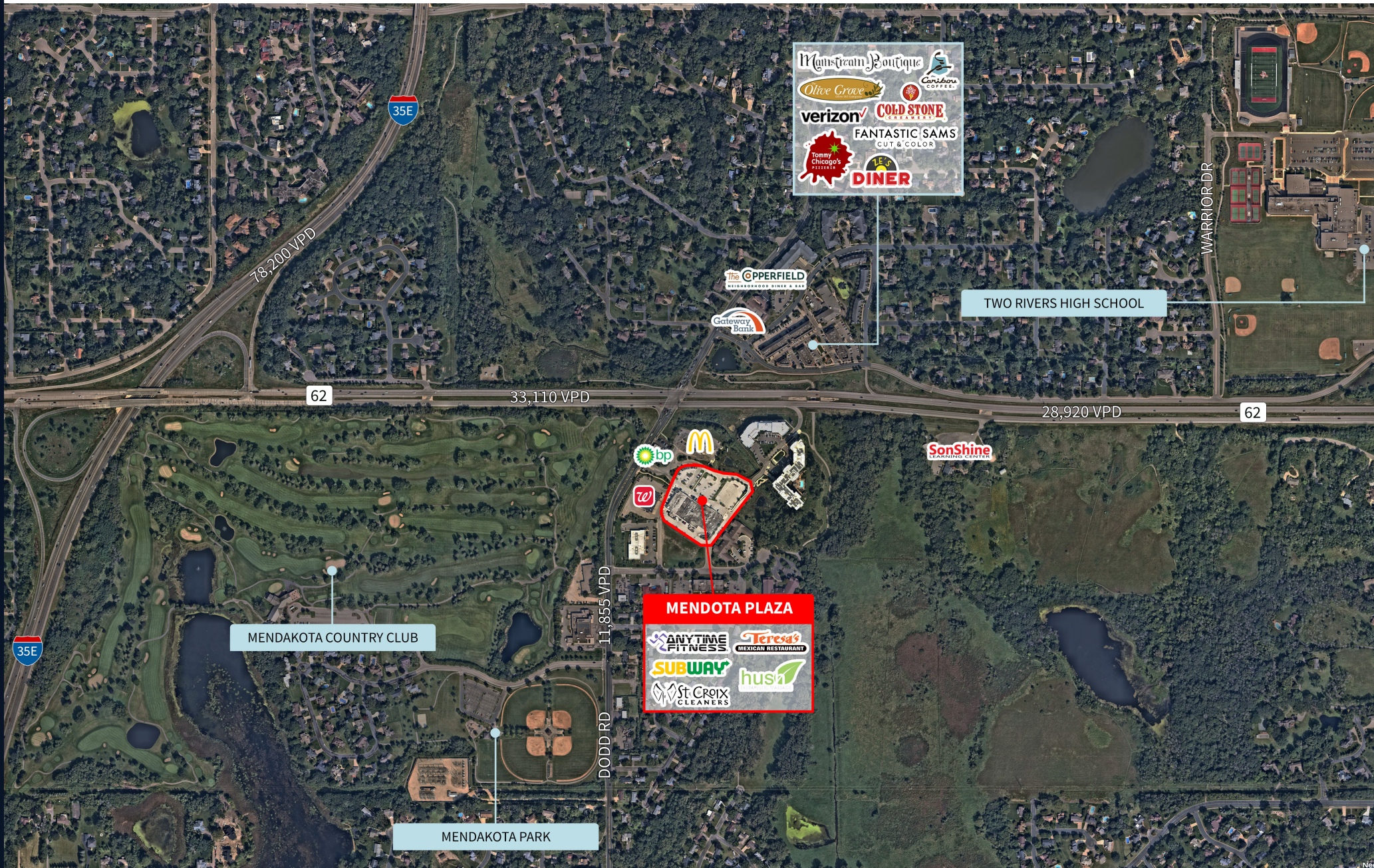


	1 mile radius	3 mile radius	5 mile radius
Population	4,553	50,717	218,155
Median HH Income	\$150,059	\$79,068	\$83,996
Average HH Income	\$192,942	\$117,898	\$120,907

\* Source: 2024 Esri Forecasts based on The Census 2000 and 2010 data converted by Esri into 2020 geography



# Aerial - Trade Area





# Site Plan



SUITE	TENANT	SQUARE FOOTAGE
752	AT LEASE   Brew Pub / Restaurant	8,488 SF
<b>754</b>	<b>AVAILABLE</b>   2nd Gen Restaurant Space	<b>2,856 SF</b>
756	Anytime Fitness	7,683 SF
758	AT LEASE   Medical	3,200 SF
760	King and I Thai	3,046 SF
762	Teresa's Mexican Restaurant	6,571 SF
766	Mendota Liquor Barrel	3,650 SF
768	Subway	1,567 SF
770	Brighter Minds	1,310 SF
772	Enchanted Nails Spa	1,144 SF
<b>774</b>	<b>AVAILABLE</b>   Second Generation Office	<b>1,227 SF</b>
776	Hush Therapeutic Massage	1,227 SF
778	St. Croix Cleaners	1,208 SF
780	AT LEASE   Medical	1,869 SF
790	Walgreens	14,820 SF

**Contact Us** >>

**Jack Whitcomb**

Associate

jack.whitcomb@jll.com

651 207 3498

**Zac Hoang**

Senior Vice President

zac.hoang@jll.com

612 250 4663