



For Lease

Yaletown Mews

1003 — 1083 Cambie Street
Vancouver, BC

THE LOCATION

Yaletown Mews is centrally located at the corner of Cambie Street and Nelson Street in the popular and upbeat Yaletown district within the downtown core of the City of Vancouver.

The building is two blocks from the Yaletown Roundhouse Canada Line Station which reaches destinations of Richmond and the YVR Airport within twenty minutes.

SALIENT DETAILS

| BASIC RENT | ADD'L RENT (2025) | SIGNAGE |
|----------------------------|-------------------|--|
| Contact the listing agents | \$23.66 psf/pa | Building signage opportunity available |

AVAILABLE SUITES

| SUITE | SF | AVAILABILITY | |
|------------------------|-----------------------|------------------------|-------------------------|
| 200 Nelson | 3,898 s.f. | Immediately | DETAILS |
| 1005 Cambie | 1,564 s.f. | Immediately | DETAILS |
| 1019 Cambie | 1,322 s.f. | Immediately | LEASED |
| 1081 Cambie | 1,827 s.f. | Immediately | DETAILS |
| 1083 Cambie | 1,830 s.f. | Immediately | DETAILS |



100
Rider's Paradise



92
Very Bikeable



77
Walker's Paradise



For Lease

200 Nelson

SALIENT DETAILS

SQUARE FOOTAGE
3,898 s.f.

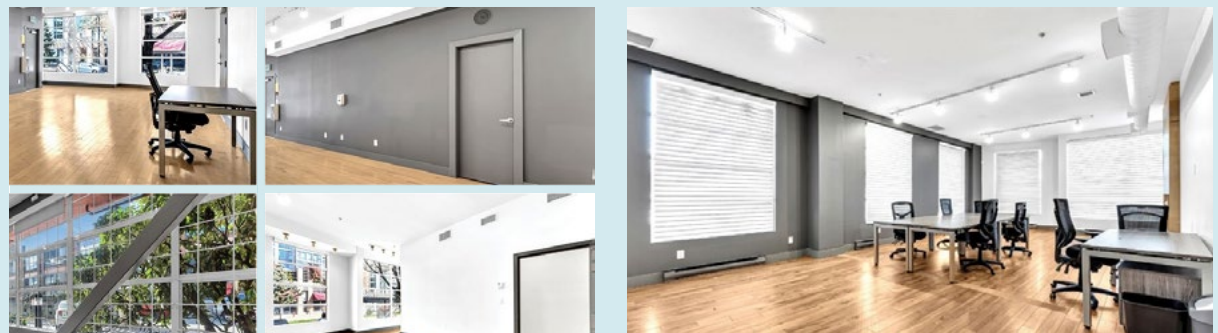
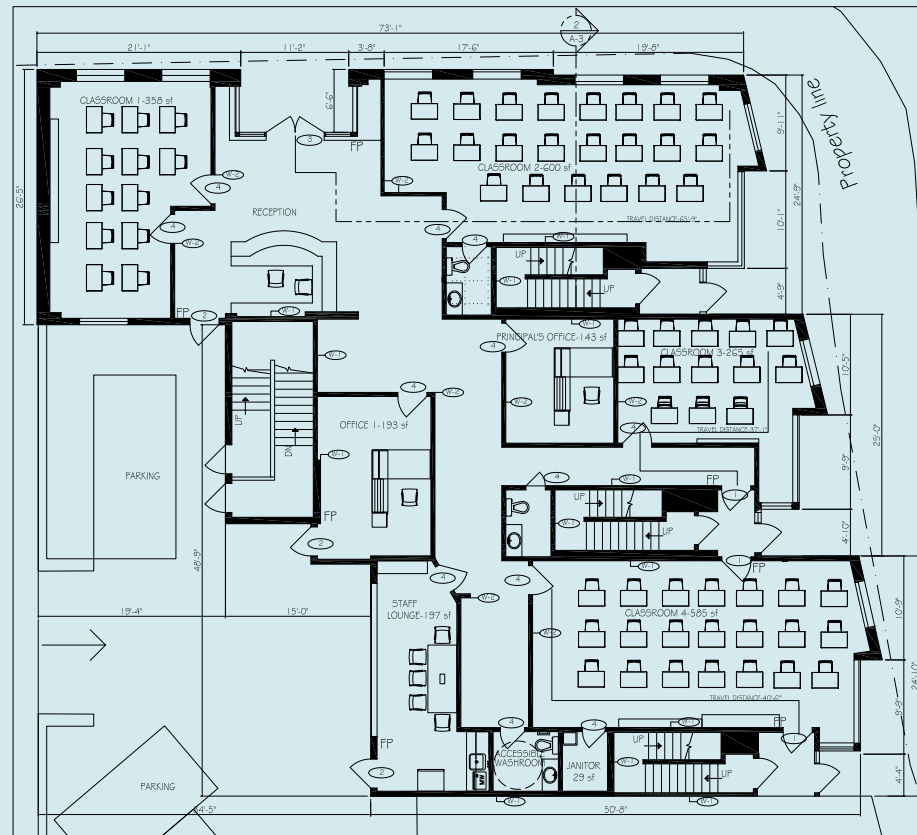
ADDRESS
**200 Nelson Street
Vancouver, BC**

AVAILABILITY
Immediately

BASIC RENT
Contact listing agents

ADDITIONAL RENT (2025)
\$23.66 psf/pa

SUITE COMMENTS
Well improved school premises with high ceilings. The premises includes multiple street front entrances/exits, 8 classrooms, administration and lounge areas, private washrooms and reception.



For Lease

1005

Cambie

SALIENT DETAILS

SQUARE FOOTAGE

1,564 s.f.

ADDRESS

**1005 Cambie Street
Vancouver, BC**

AVAILABILITY

Immediately

BASIC RENT

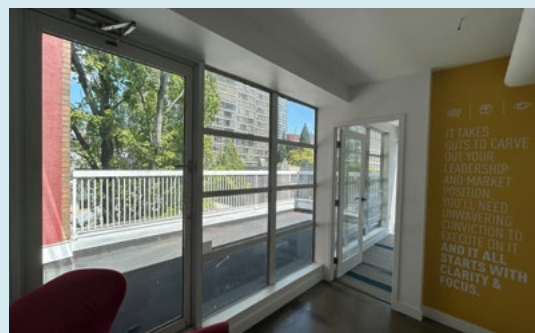
Contact listing agents

ADDITIONAL RENT (2025)

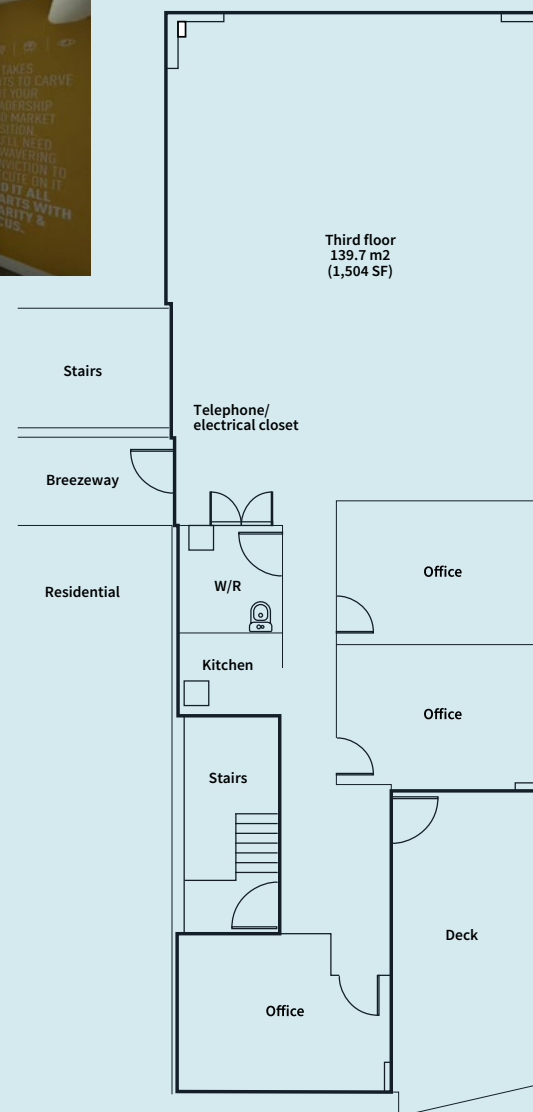
\$23.66 psf/pa

SUITE COMMENTS

3rd floor office premises complete with two offices, boardroom, private patio and open work area. The suite is accessible via elevator or stairs with direct access to Cambie Street. Signage is available.



First floor



Third floor
139.7 m2
(1,504 SF)

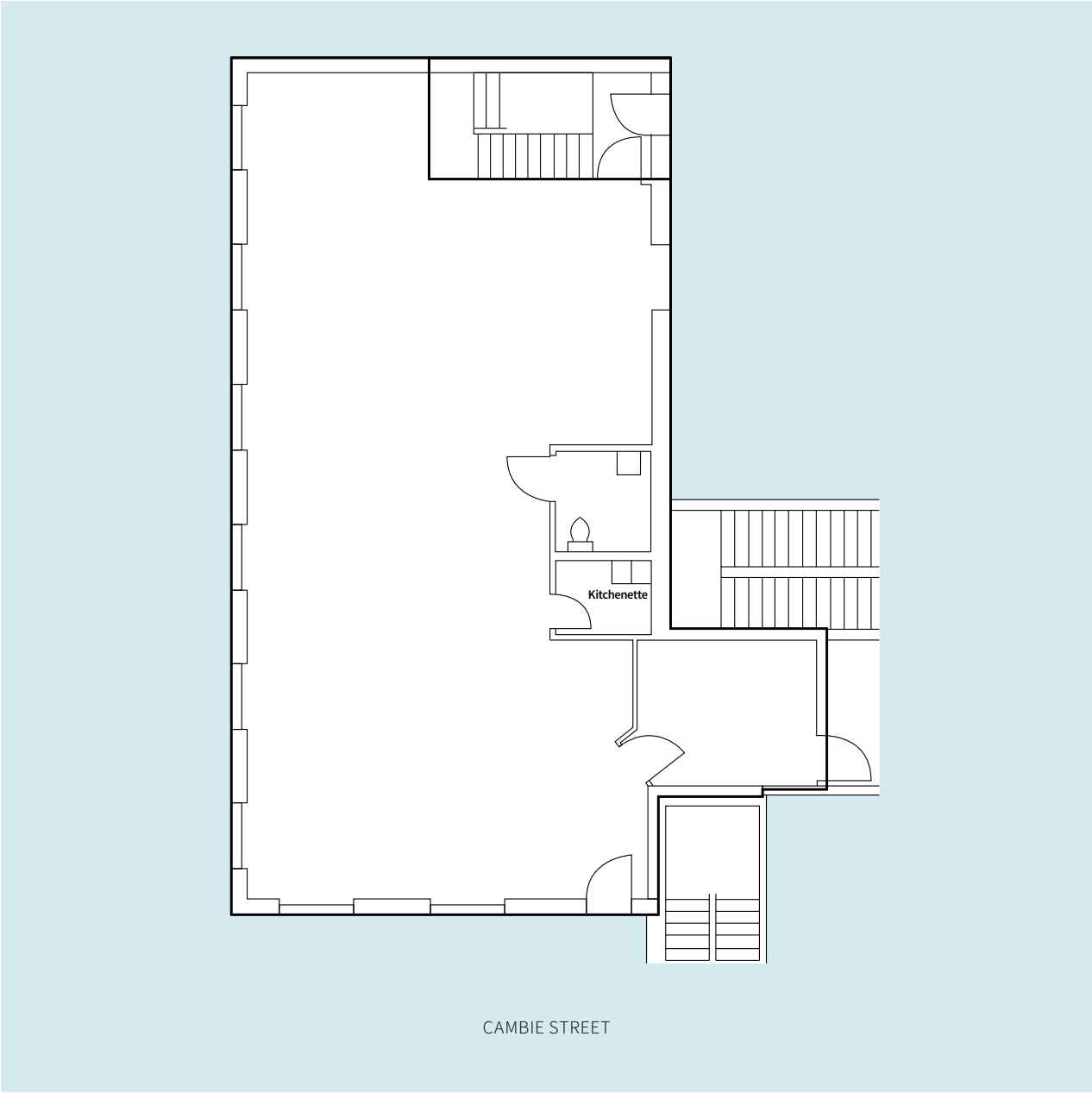
For Lease

1081

Cambie

SALIENT DETAILS

| | |
|------------------------|-------------------------------------|
| SQUARE FOOTAGE | 1,827 s.f. |
| ADDRESS | 1081 Cambie Street Vancouver, BC |
| AVAILABILITY | Immediately |
| BASIC RENT | \$28.00 |
| ADDITIONAL RENT (2025) | \$23.66 psf/pa |
| SUITE COMMENTS | Open office/retail space |



For Lease

1083

Cambie

SALIENT DETAILS

SQUARE FOOTAGE
1,830 s.f.

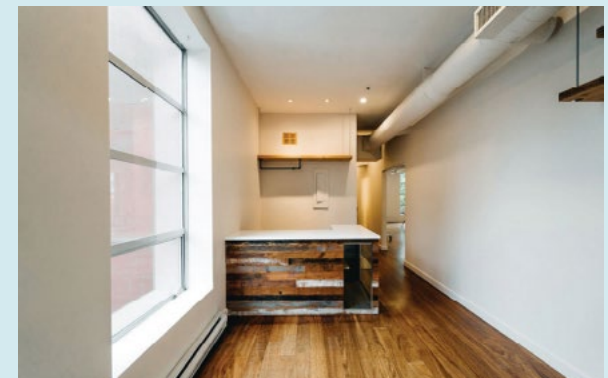
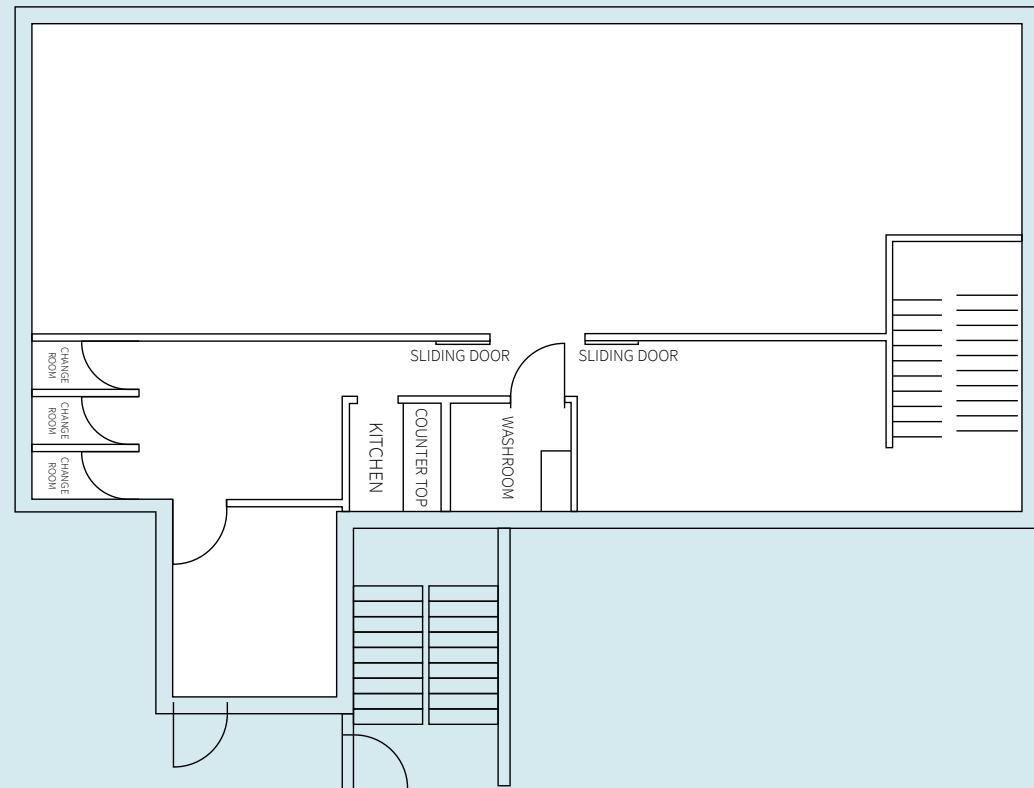
ADDRESS
**1083 Cambie Street
Vancouver, BC**

AVAILABILITY
Immediately

BASIC RENT
Please contact listing agents

ADDITIONAL RENT (2025)
\$23.66 psf/pa

SUITE COMMENTS
**Beautifully improved office/
studio premises consisting
of open plan, changerooms,
private washroom and
reception/waiting area.**



NEARBY AMENITIES

Wellness

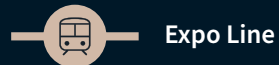
1. David Lam Park
2. YVR Cycle Spin Studio
3. Skoah Yaletown
4. Emery Barnes Park
5. YYOGA
6. Seawall
7. Kondi Fitness

Food and Fun

8. Earls Kitchen + Bar
9. Cactus Club Cafe
10. The Parlour
11. Yaletown Brew Pub
12. The Flying Pig
13. The Keg Steakhouse + Bar

Necessities

14. Urban Fare
15. Choices Market
16. Nesters Food Market
17. Shoppers Drug Mart



Expo Line



Canada Line



Andrew Astles

Associate Vice President
+1 604 363 6673
andrew.astles@jll.com

Mark Trepp*

Executive Vice President
+1 604 998 6035
mark.trepp@jll.com

