

2001 ADDISON STREET



Office Space Available For Lease



Building Specifications



Located in Historic Downtown Berkeley



Recently upgraded building
HVAC system



Monthly parking across the
street at the Center Street
Parking Garage



Walking distance to
neighborhood amenities –
restaurants, Cafes & Bars



Minutes from
UC Berkeley Campus



2 blocks from Downtown
Berkeley BART station



5 bus stops
within walking distance



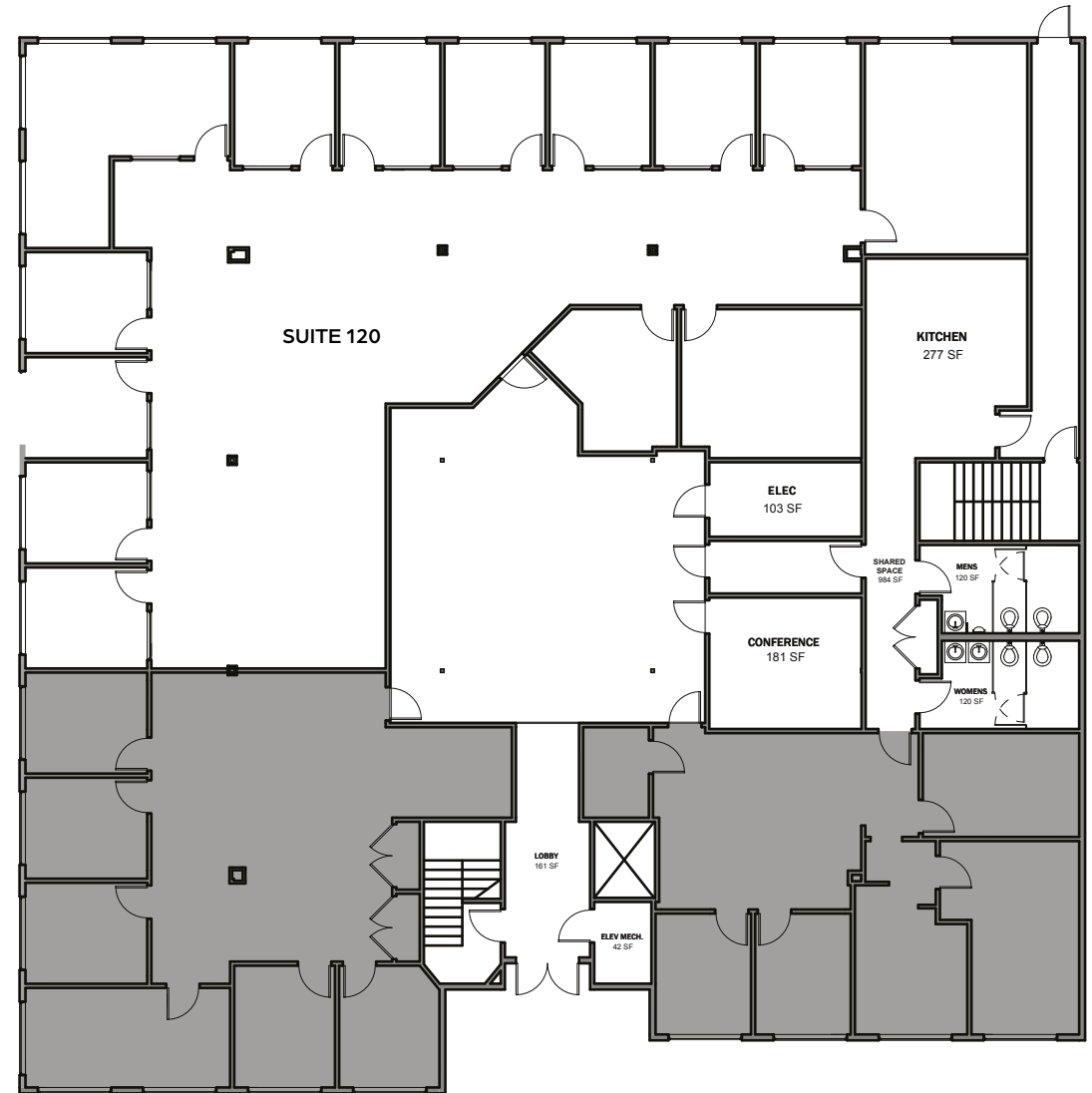
Located within an
Opportunity Zone



Availabilities Overview

First Floor | Suite 120

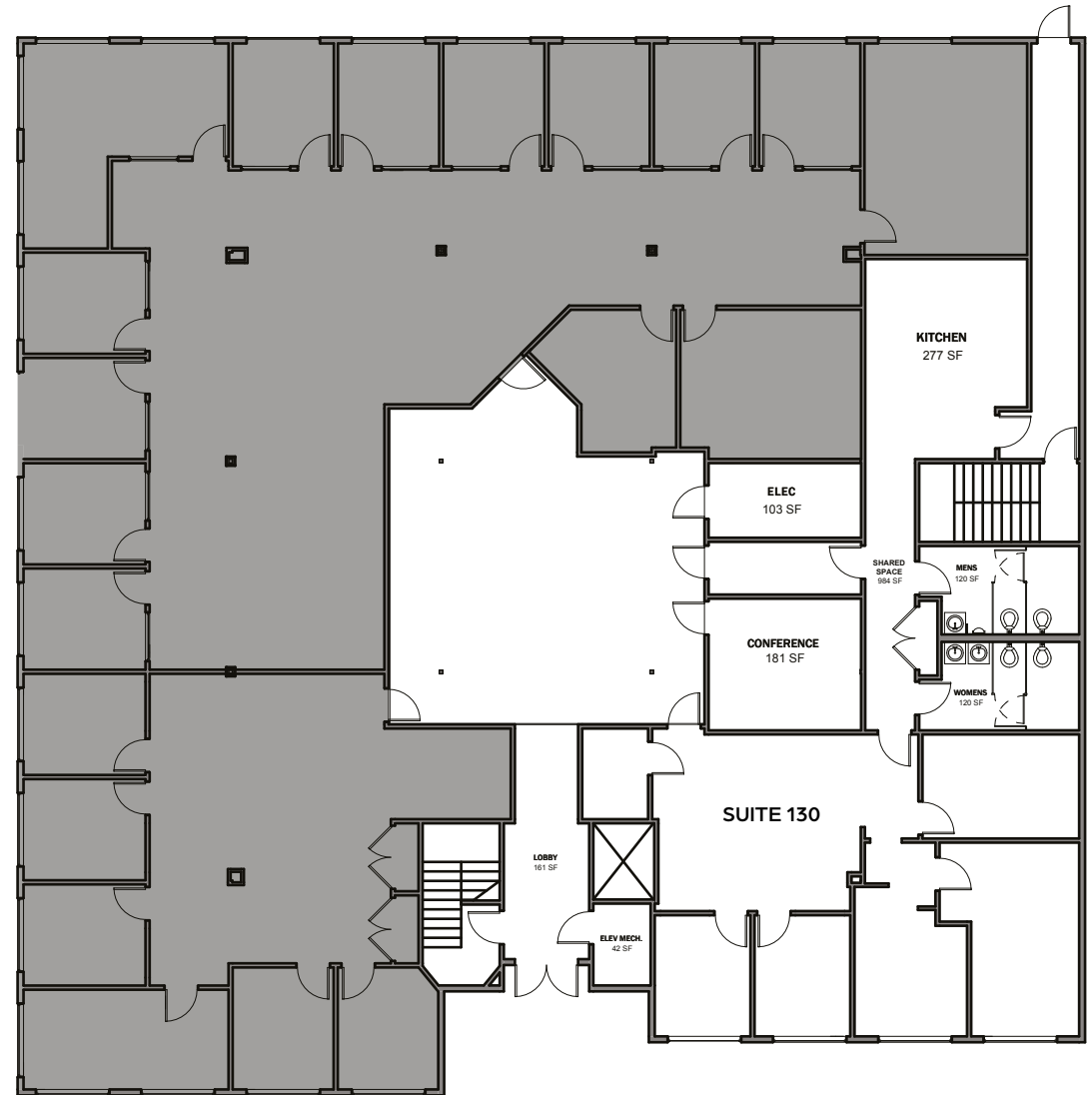
- ±4,140 SF
- Extensive natural light
- One central and 3-stop elevator
- Large glass atrium



Availabilities Overview

First Floor | Suite 130

- $\pm 1,277$ SF
- Extensive natural light
- One central and 3-stop elevator
- Large glass atrium



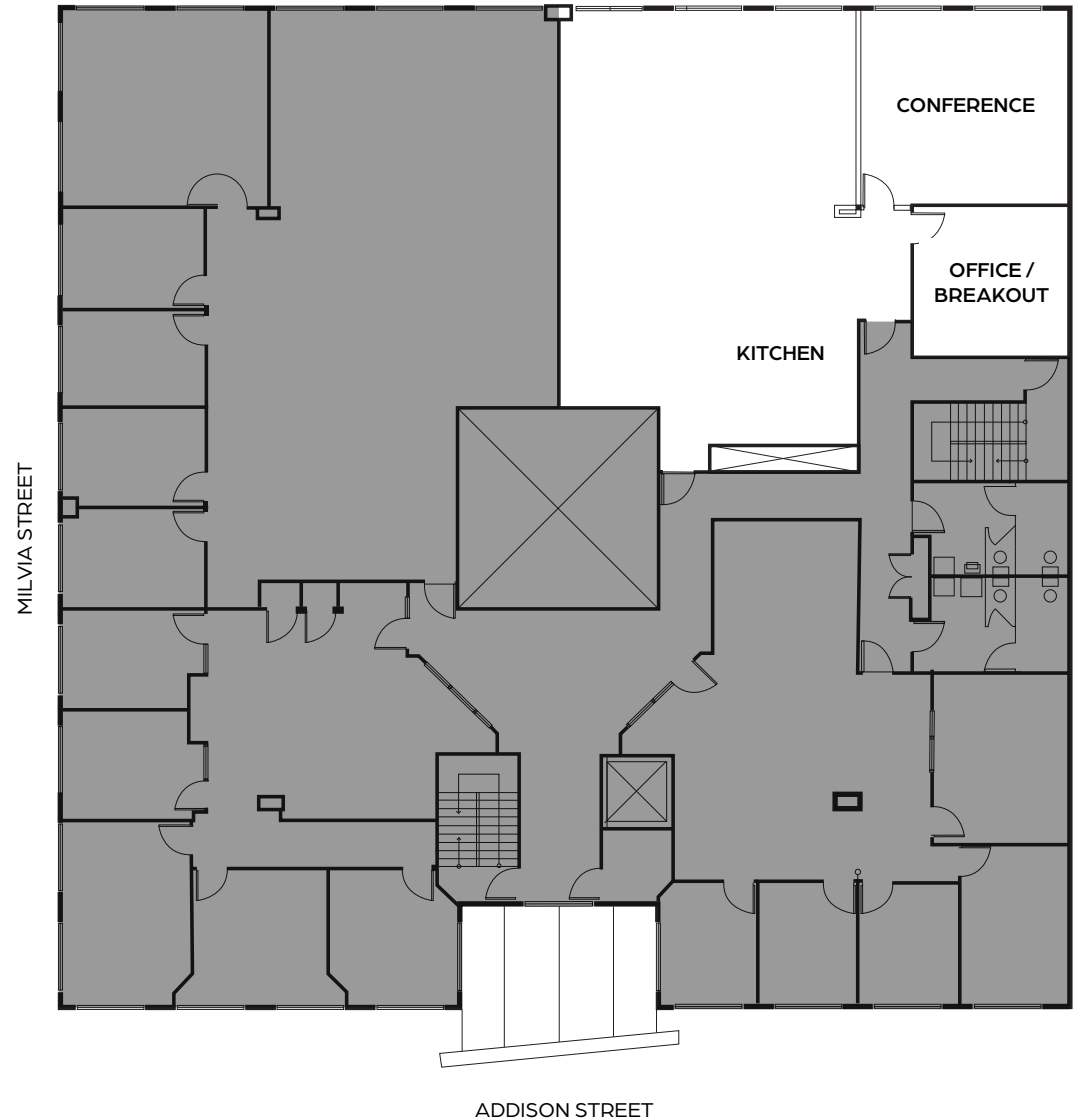
Availabilities Overview

Second Floor | Suite 260

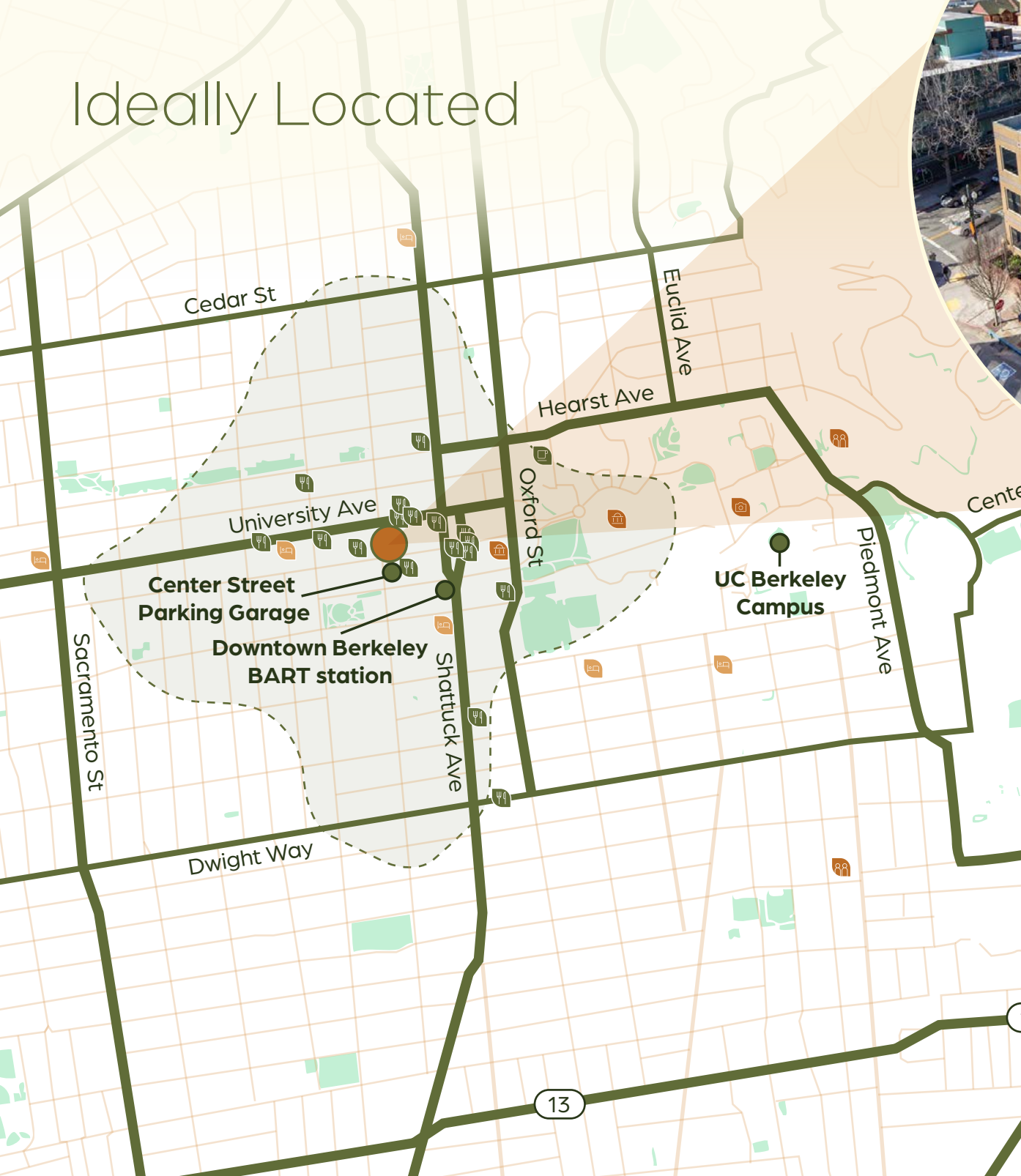
- ±2,373 RSF
- Spec suite with new finishes
- 1 Private office/breakout room
- 1 Conference room
- Large open space
- 1 Newly finished kitchenette
- Extensive natural light



Virtual Tour



Ideally Located



Just minutes from what matters

- Walk score – 100
- Transit score – 72
- Bike score – 100
- 2 blocks from Downtown Berkeley BART station
- 5 bus stops within walking distance



2001 ADDISON STREET

CHARLIE SWEENEY | License #01987199
Vice President
+1 510 593 8034
Charlie.Sweeney@jll.com

SAM SWAN | License #00992868
Managing Director
+1 510 388 6400
Sam.Swan@jll.com



Although information has been obtained from sources deemed reliable, neither Owner nor JLL makes any guarantees, warranties or representations, express or implied, as to the completeness or accuracy as to the information contained herein. Any projections, opinions, assumptions or estimates used are for example only. There may be differences between projected and actual results, and those differences may be material. The Property may be withdrawn without notice. Neither Owner nor JLL accepts any liability for any loss or damage suffered by any party resulting from reliance on this information. If the recipient of this information has signed a confidentiality agreement regarding this matter, this information is subject to the terms of that agreement. ©2025 Jones Lang LaSalle IP, Inc. All rights reserved.