



# Available

**The Plaza at West Lakes**  
**6750 Westown Parkway**  
**West Des Moines, IA 50266**

## **The Plaza at West Lakes – Office/Retail Space**

**Availability:** Suite 115: 3,447 RSF

**Rate:** \$16.00/RSF NNN

**Est. OPEX:** \$10.64/RSF

### **Property information:**

- Building signage available
- Ample parking
- Quality finishes with Google fiber internet available
- Neighboring tenants include Wintrust Mortgage, Farm Bureau, Aesthetic Collective, Dommer Massage, Salon Suites, Northern Lights Pizza, The UPS Store, West Lakes Salon, and Pickleman's
- Total building size: 28,673 SF

---

**Thomas Edwards**  
Associate

+1 515 802 4684

[thomas.edwards@jll.com](mailto:thomas.edwards@jll.com)

**Nick Anderson**  
Associate

+1 515 729 6015

[nicholas.anderson@jll.com](mailto:nicholas.anderson@jll.com)

**Marcus R. Pitts, CCIM, SIOR**  
Senior Managing Director

+1 515 556 4727

[marcus.pitts@jll.com](mailto:marcus.pitts@jll.com)

---

[jll.com/des-moines](http://jll.com/des-moines)





Exterior images

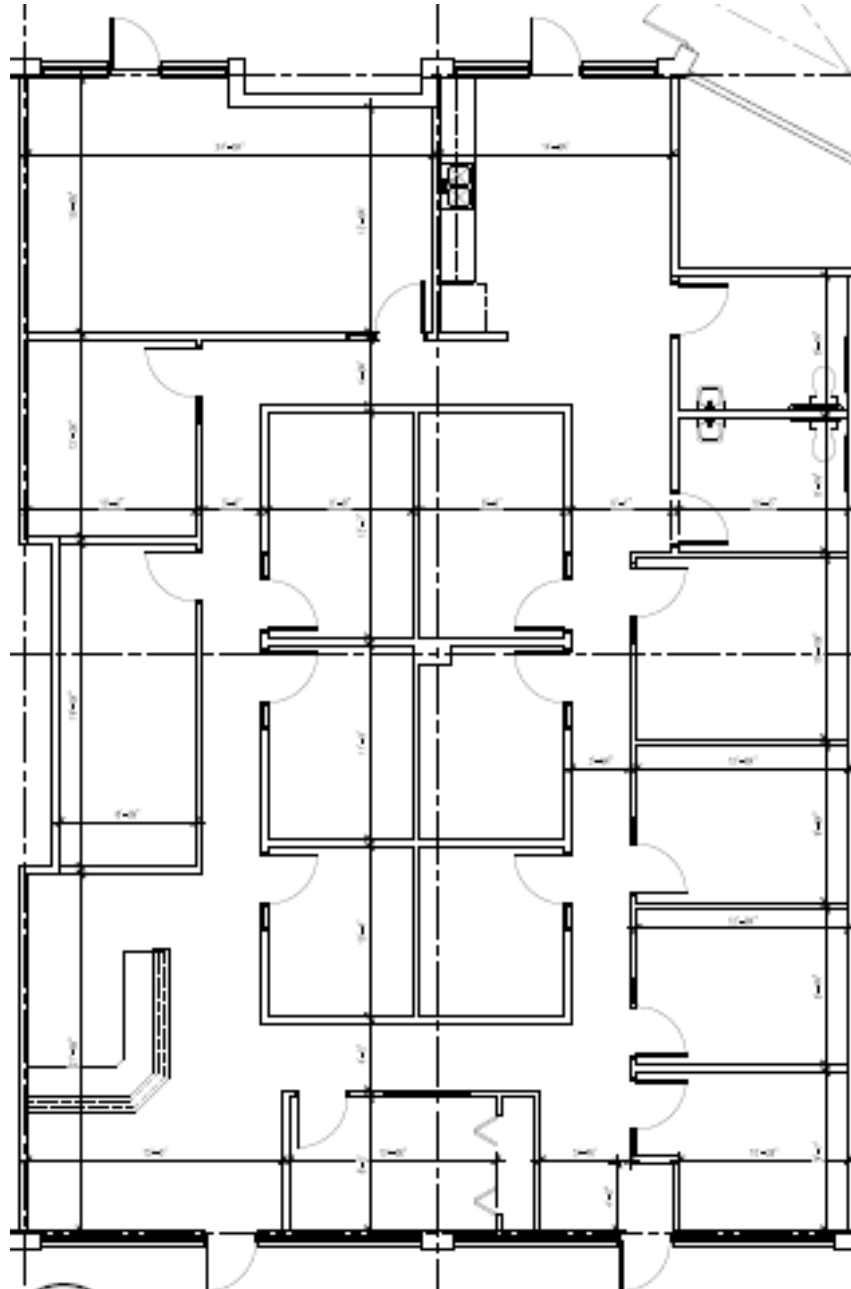


Floor plan



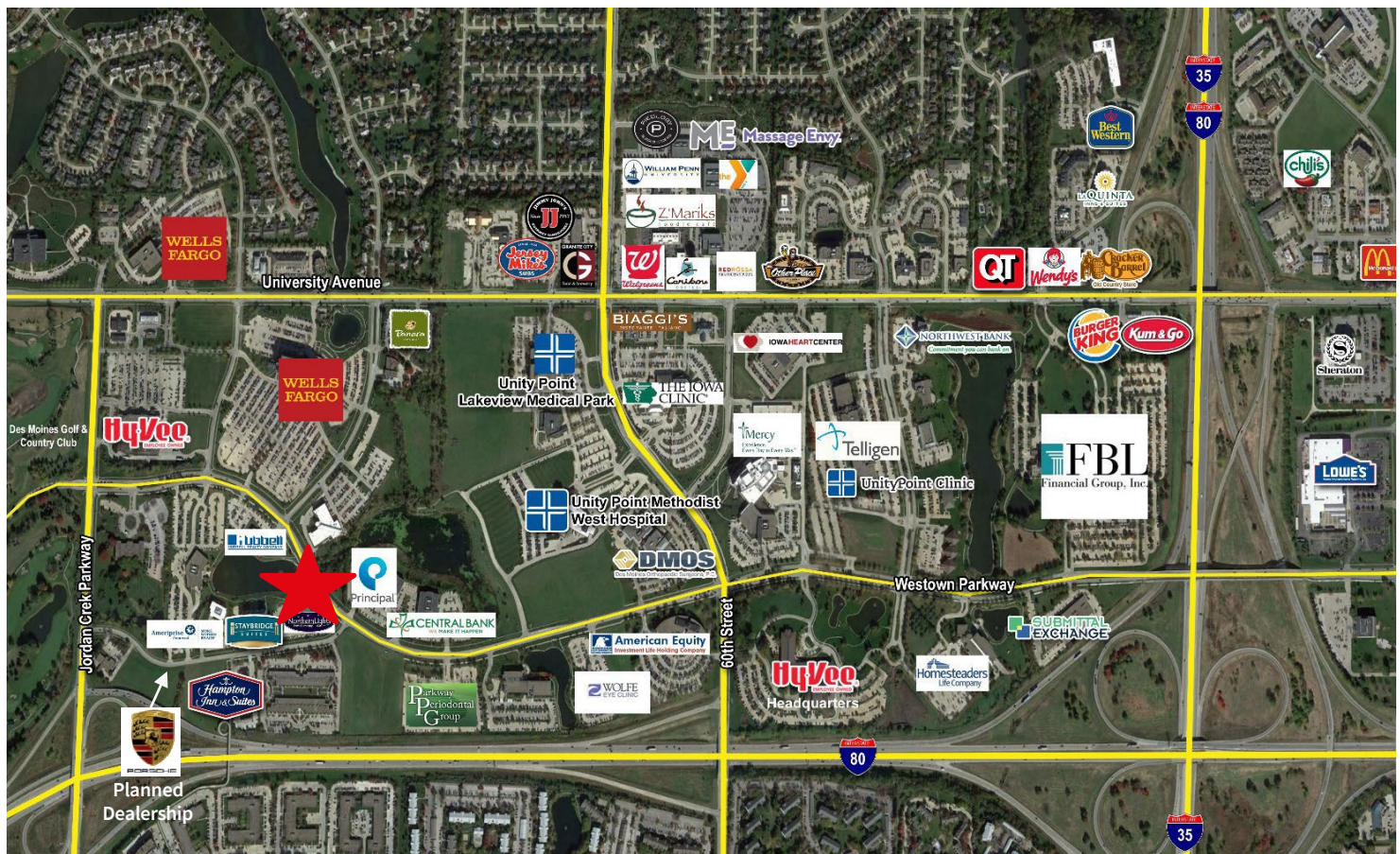
For lease  
Suite 115  
3,447 RSF

**Estimated OPEX: \$10.64/SF**





## Location map



## Demographics

	1 Mile	3 Miles	5 Miles
Population	6,121	72,549	151,659
Households	2,584	28,966	60,917
Average HH Income	\$89,652	\$98,651	\$88,752

## Traffic counts

Westown Parkway	7,705 VPD
Interstate 80/35	71,835 VPD
Jordan Creek Parkway	29,904 VPD

## Contact

**Thomas Edwards**

Associate

+1 515 802 4684

[thomas.edwards@jll.com](mailto:thomas.edwards@jll.com)

**Nick Anderson**

Associate

+1 515 729 6015

[nicholas.anderson@jll.com](mailto:nicholas.anderson@jll.com)

**Marcus R. Pitts, CCIM, SIOR**

Senior Managing Director

+1 515 556 4727

[marcus.pitts@jll.com](mailto:marcus.pitts@jll.com)