



1407 MAIN ST
RAMONA, CA



5,460 SF retail space with drive-thru,
divisible between 2,094 SF & 3,366 SF

Here your business is **ESSENTIAL**

Step into the charm of Ramona where natural awe-inspiring landscapes are the backdrop to this free-standing retail space spanning 5,460 SF (with the option to demise).

1407 Main St. is suited for a range of commercial uses catering to a close-knit community and visitors throughout the balance of east San Diego County.

Property highlights



5,460 SF available with drive-thru divisible between 2,094 SF & 3,366 SF



Located in the bustling Homestar Shopping Center, one of Ramona's primary retail destinations.



Strong retail thoroughfare, 48 minutes to Downtown San Diego via highway 67.

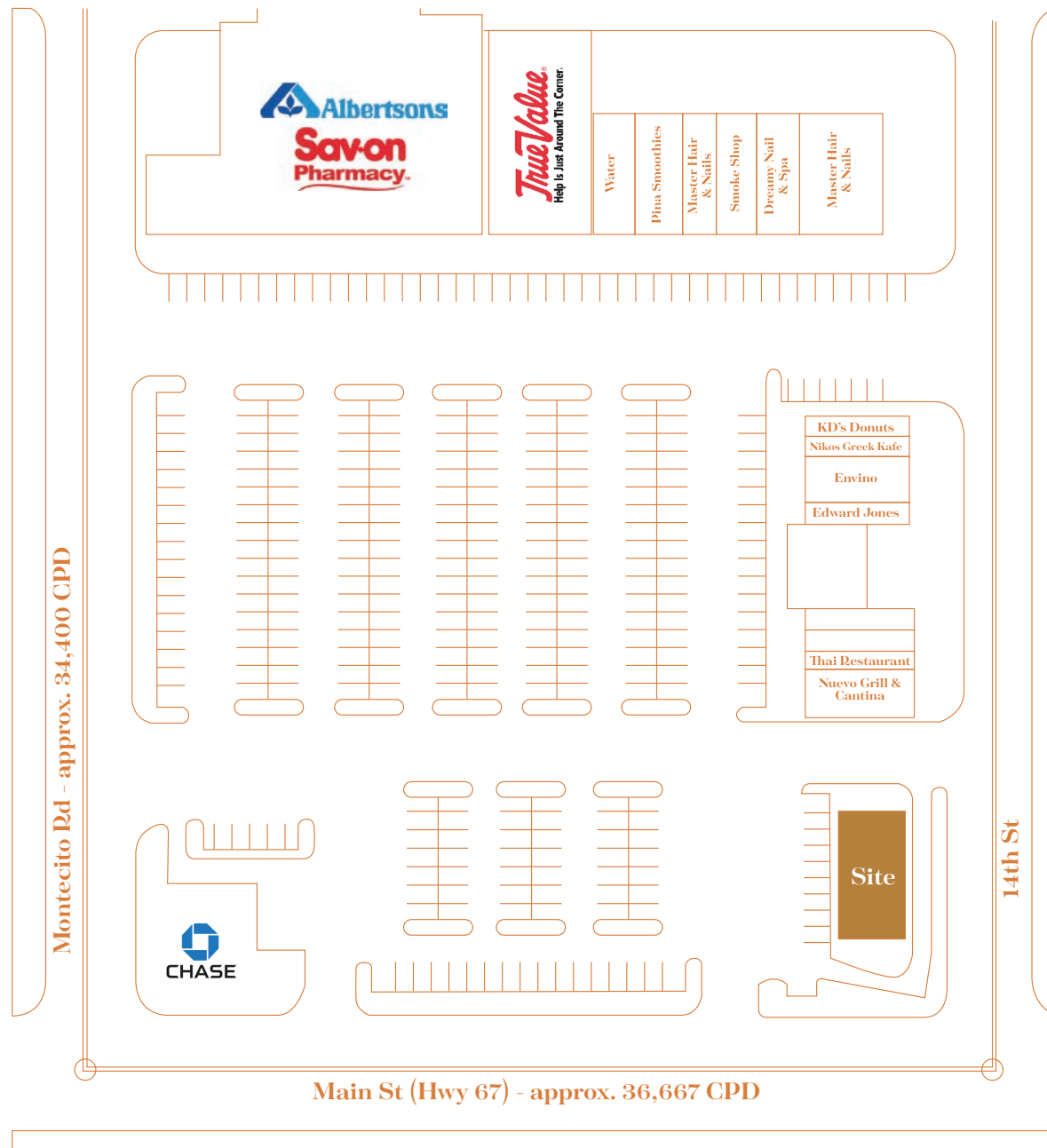


Visitors travel from neighboring cities of Julian, Santa Ysabel, Ranchita and Borrego Springs. *Source: Placer.AI*



1407 MAIN ST RAMONA, CA

5,460 SF
available

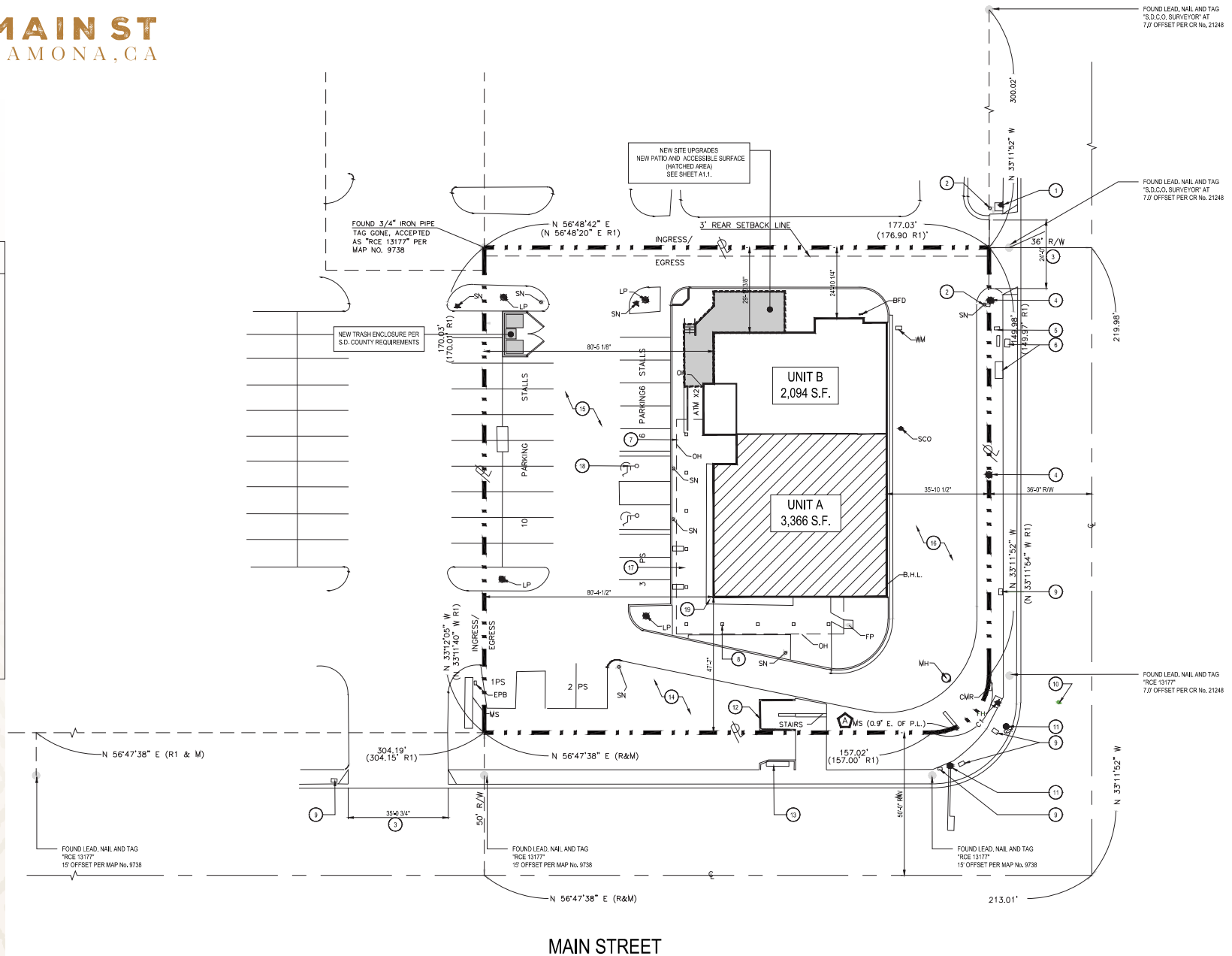


1407 MAIN ST RAMONA, CA

5,460 SF
available

SHEET KEYNOTES

1. EXISTING FIRE HYDRANT.
2. EXISTING SIGN.
3. EXISTING DRIVEWAY.
4. EXISTING LIGHT POLE.
5. EXISTING WATER METER.
6. EXISTING COMMUNICATION CABINET.
7. EXISTING ROOF OVERHANG.
8. EXISTING COLUMN.
9. EXISTING TRAFFIC SIGNAL PULLBOX.
10. EXISTING WATER VALVE.
11. EXISTING TRAFFIC SIGNAL.
12. EXISTING BLOCK WALL.
13. EXISTING BENCH.
14. EXISTING LANDSCAPE AREA.
15. EXISTING PARKING LOT.
16. EXISTING DRIVE THRU LANE.
17. EXISTING CONC. SIDEWALK.
18. EXISTING VAN ACCESSIBLE PARKING STALLS.
19. EXISTING PLANTER.

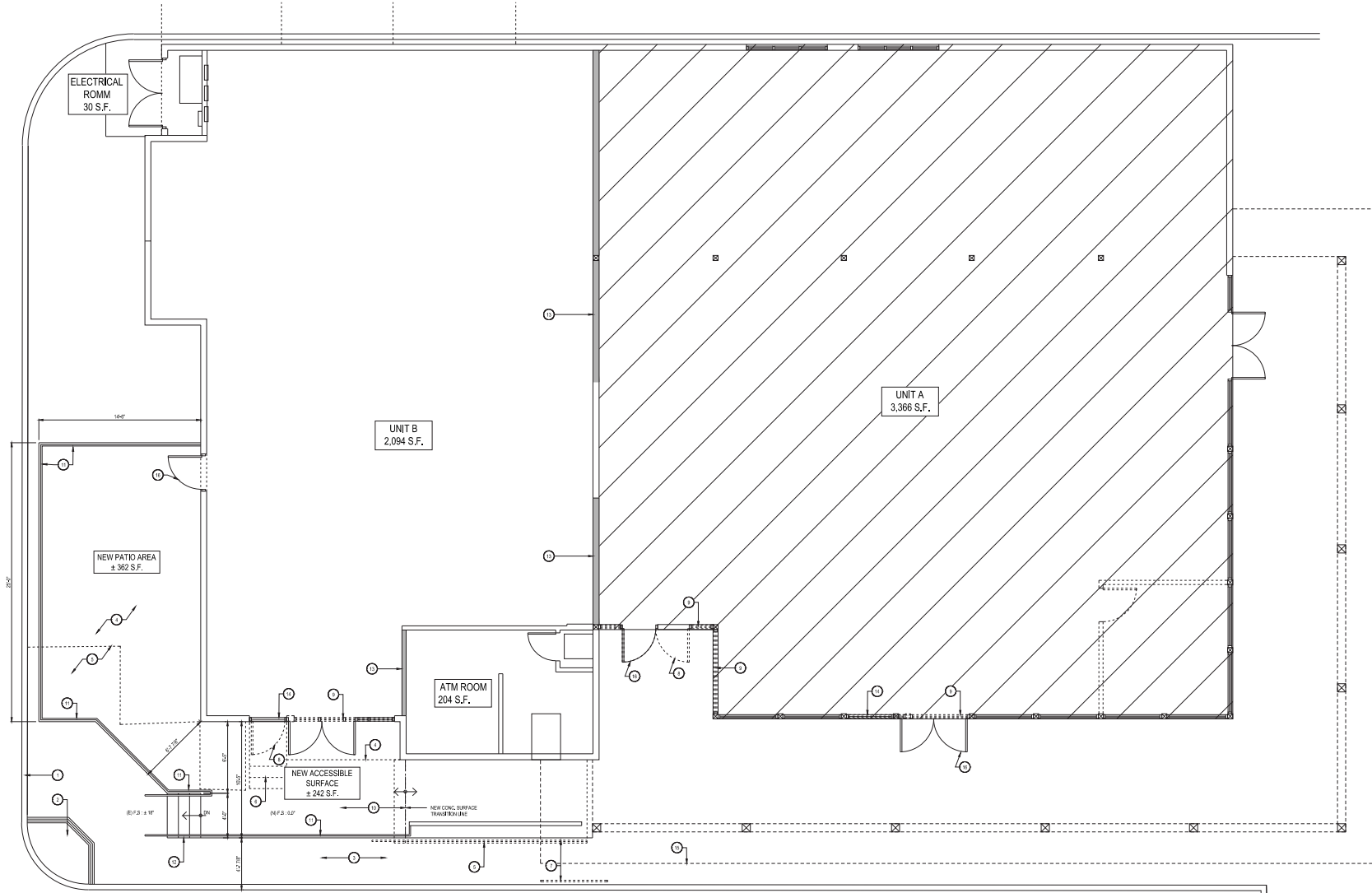


SITE PLAN

A

1407

MAIN ST
RAMONA, CA



FLOOR PLAN WALL LEGEND

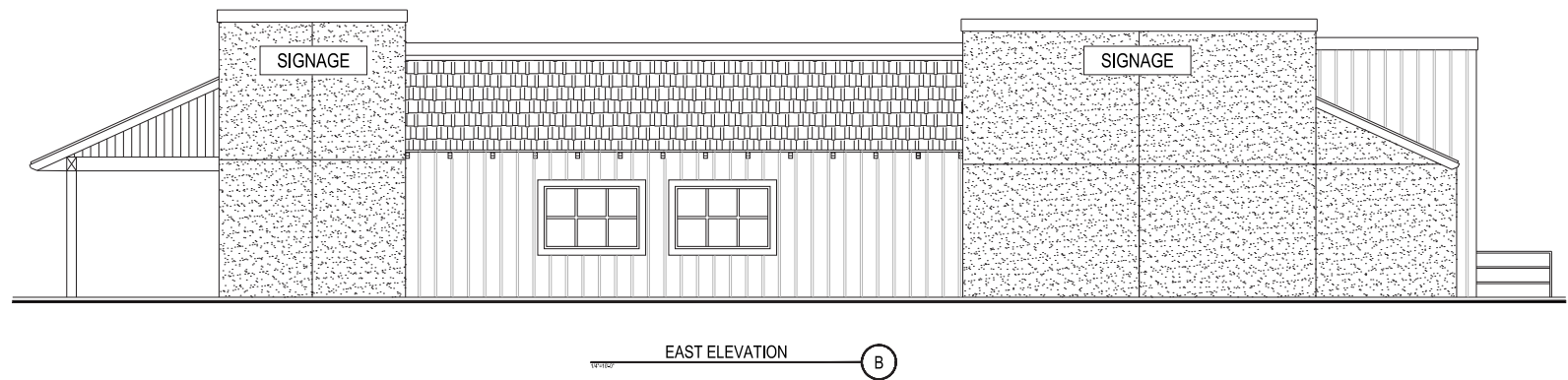
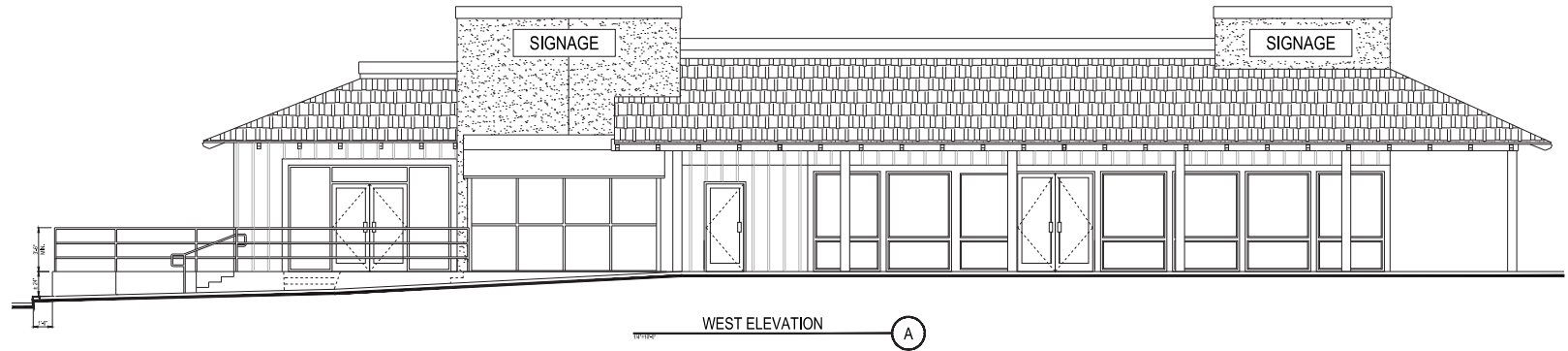
---	DEMO ITEMS.
---	EXISTING WALLS
—	NEW DEMISING WALL (TO MATCH EXISTING)

SHEET KEYNOTES

1. EXISTING CURB.
2. EXISTING CURB-CUT RAMP TO REMAIN.
3. EXISTING CONC. SIDEWALK.
4. EXISTING LANDSCAPE TO BE REMOVED.
5. EXISTING PORTION OF CONCRETE TO BE REMOVED.
6. EXISTING CONCRETE STEPS AND LANDING TO BE REMOVED.
7. EXISTING RAILING TO BE REMOVED.
9. EXISTING WINDOW TO BE REMOVED.
10. NEW CONCRETE SURFACE.
11. NEW CONTINUOUS GUARDRAIL.
12. NEW CONCRETE STEPS.
13. NEW DEMISING WALL.
14. NEW STOREFRONT.
15. ROOF PROJECTION (DSH LINE).
16. NEW DOOR(S) PER PLAN.

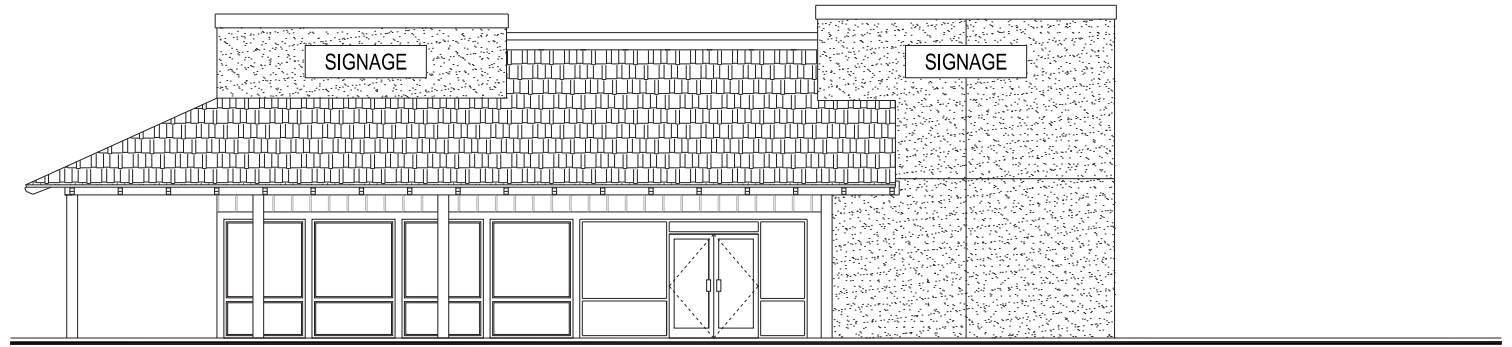
1407

MAIN ST
RAMONA, CA



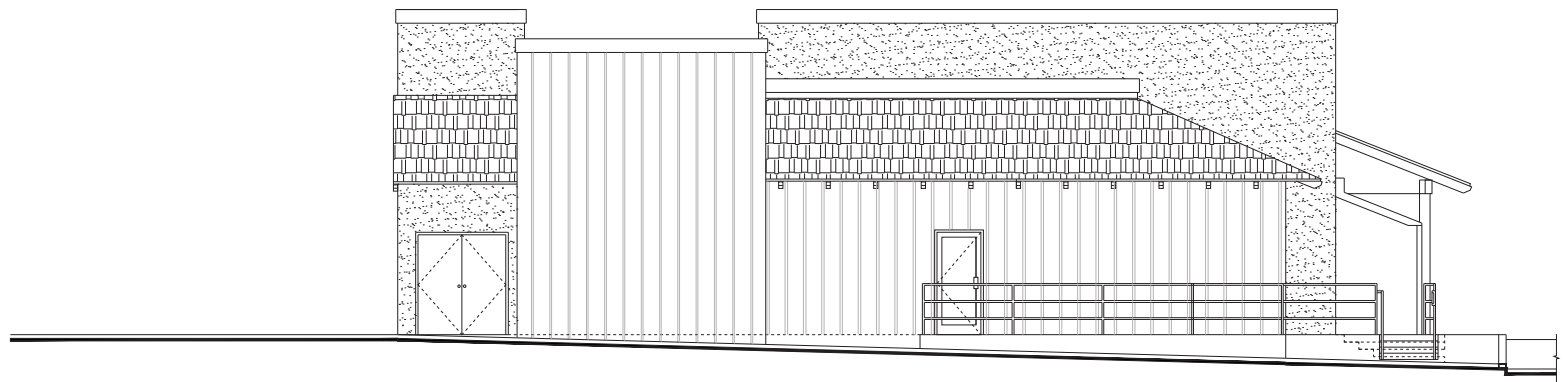
1407

MAIN ST
RAMONA, CA



SOUTH ELEVATION

A



NORTH ELEVATION

B

Community SNAPSHOT

Beyond the demographics

Ramona’s scenic landscape and essential amenities draws visitors across the Inland region of San Diego, from the neighboring communities of Santa Ysabel to Julian. 1407 Main St is situated in the Homestar Shopping Center, catering to the needs of the close-knit community. With bustling traffic of 36,667 cars passing along Main St., this location ensures visibility and accessibility.



1.4M visits/per year

Source: Placer.Ai







Over \$423M spent on retail services within 10 miles

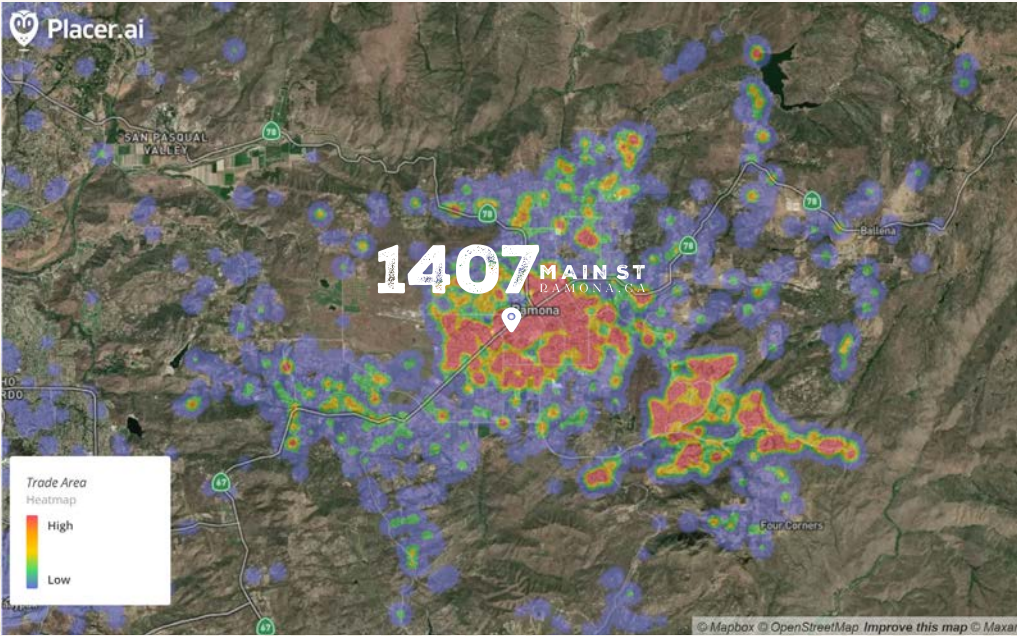
Source: ESRI



\$753,699
Average home value

Source: ESRI

Demographics	3 Miles	5 Miles	10 Miles
 Population	18,726	29,763	55,750
 Average Household Income	\$132,796	\$147,993	\$180,498
 Average Household Size	3	3	3
 Median Age	39	41	43



Ramona's primary

TRADE AREA

Meet your neighbors



1407 MAIN ST
RAMONA, CA

Walnut St

Montecito Rd

Main Street

67

10th Street

True Value

Chase

Starbucks

Dunkin' Donuts

McDonald's

CHASE

ALDI

DOLLAR TREE

POPEYES

67

Walgreens

McDonald's

STATER BROS.

Rubio's

CVS/pharmacy

Auto Zone

Kahoots

Denny's

67

↓ San Diego

🚗 38.6 mi / 48 min

1407 MAIN ST RAMONA, CA

For more information, contact:

Craig Killman
Managing Director
License # 00884183
+ 1 858 410 1237
craig.killman@jll.com

Maxx Killman
Associate
License # 02243247
+ 1 858 812 2360
maxx.killman@jll.com



Although information has been obtained from sources deemed reliable, JLL does not make any guarantees, warranties or representations, express or implied, as to the completeness or accuracy as to the information contained herein. Any projections, opinions, assumptions or estimates used are for example only. There may be differences between projected and actual results, and those differences may be material. JLL does not accept any liability for any loss or damage suffered by any party resulting from reliance on this information. If the recipient of this information has signed a confidentiality agreement with JLL regarding this matter, this information is subject to the terms of that agreement. ©2025 Jones Lang LaSalle Brokerage, Inc. All rights reserved.