



19,140 SF Available

# For Sale

885 Rochester Road | Troy, MI

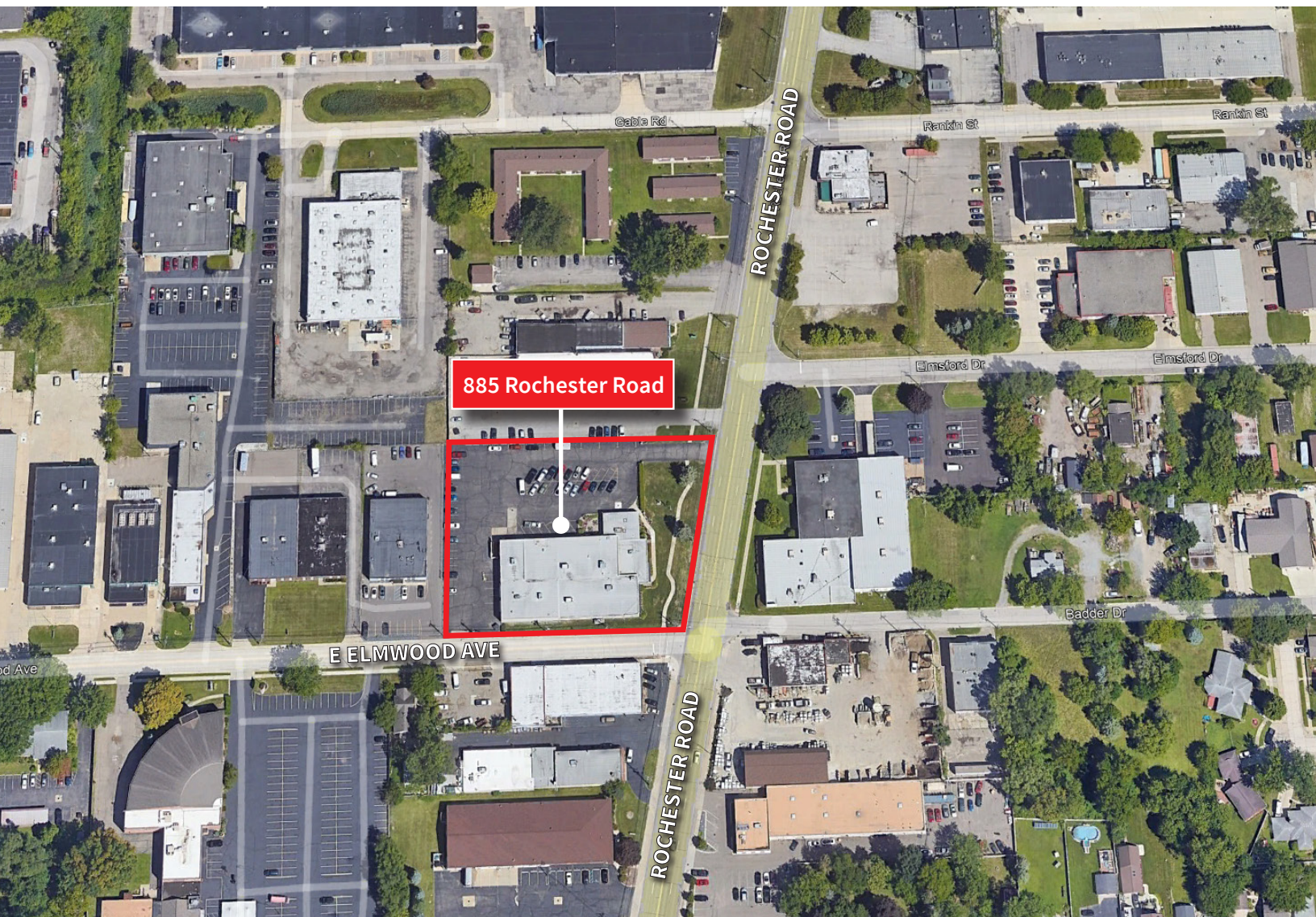


## Property Highlights

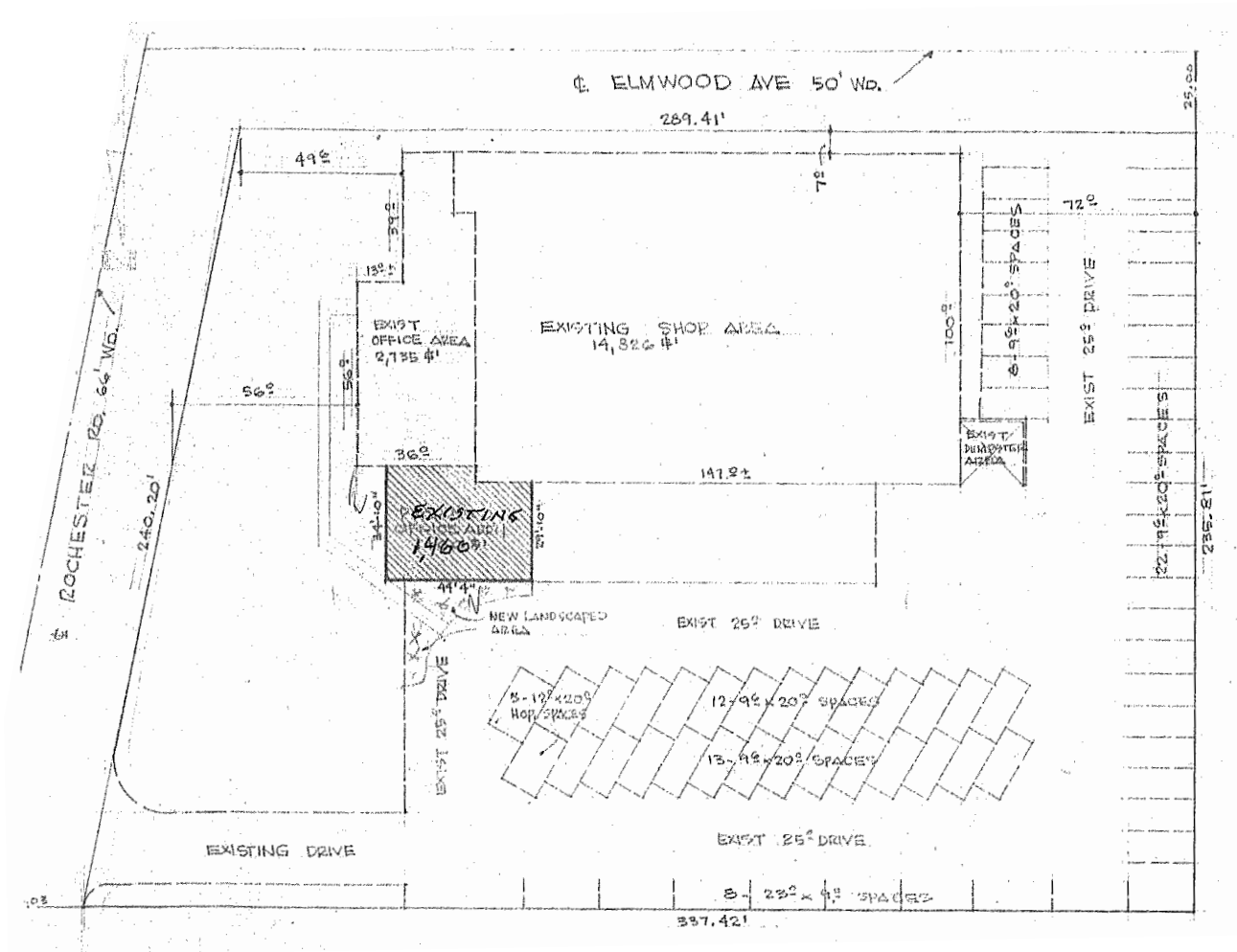
- Well maintained industrial building
- Single tenant - Great owner user opportunity
- Abundant parking - 65 spaces
- Full A/C in shop and offices
- One (1) grade level door
- Remodeled in 2010
- Rare 1.45 acre lot
- Heavy 3-phase power

**Asking Price: \$2,200,000**

Size	19,140 SF
Shop space	14,826 SF
Office space	4,314 SF
Zoning	IB (Integrated Industrial Business Park)
Parking	4.53/1,000 SF
Clear height	16'



# Site plan



JLL

Robert Mihelich

robert.mihelich@jll.com

+1 248 581 3366



## Property photos

[CLICK HERE  
TO VIEW PHOTOS](#)



JLL

**Robert Mihelich**

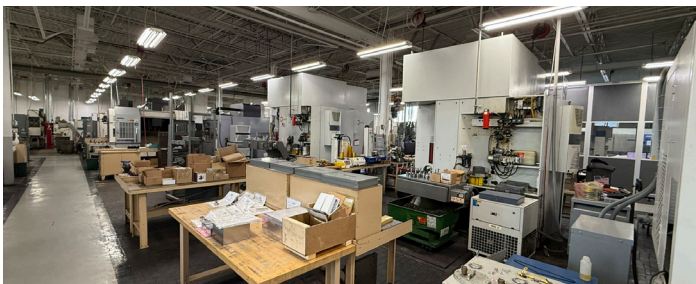
robert.mihelich@jll.com

+1 248 581 3366



## Property photos

[CLICK HERE  
TO VIEW PHOTOS](#)



JLL

**Robert Mihelich**

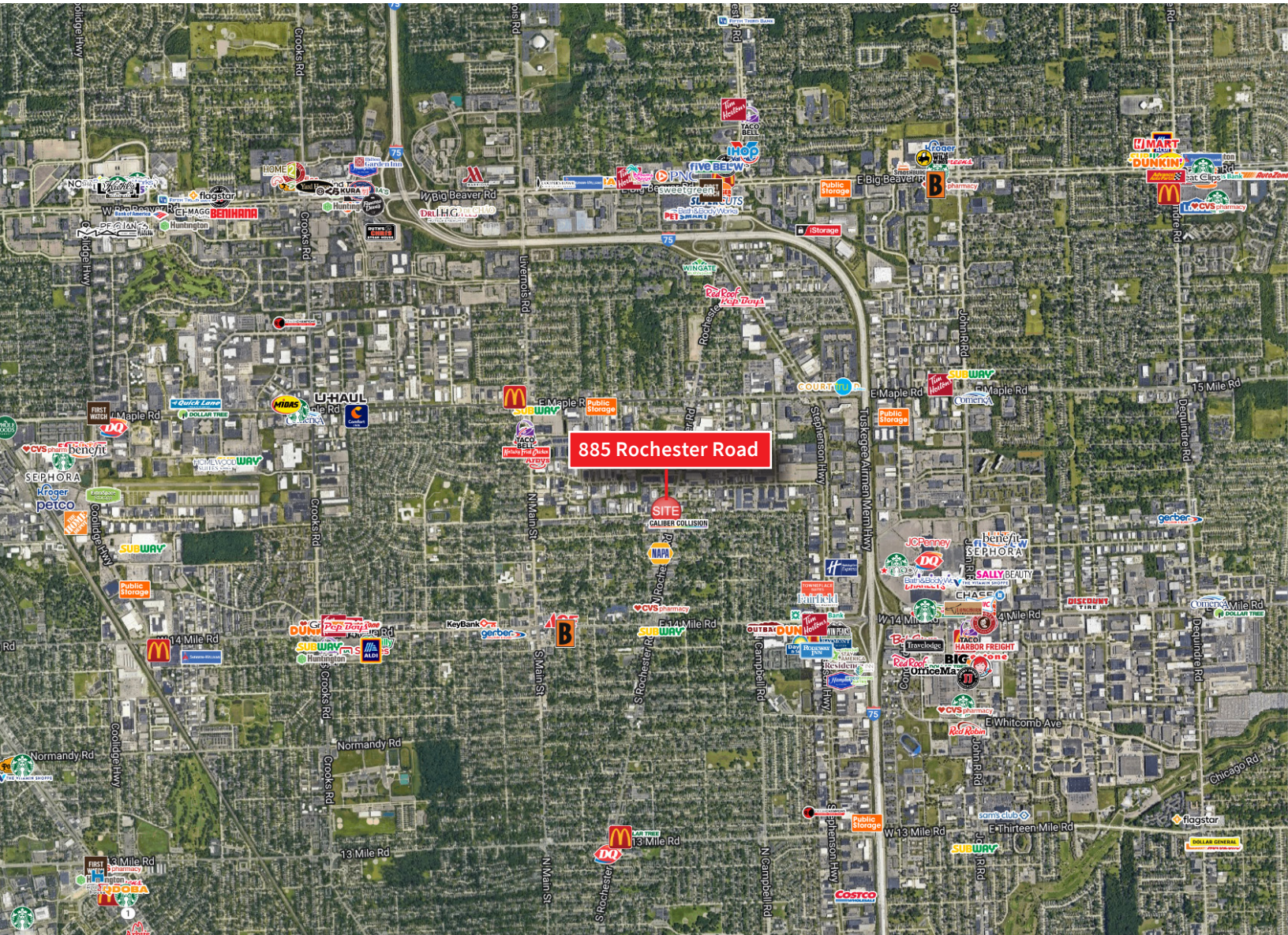
robert.mihelich@jll.com

+1 248 581 3366



885 Rochester Road / Troy

## Location map



JLL

Robert Mihelich

robert.mihelich@jll.com

+1 248 581 3366

Although information has been obtained from sources deemed reliable, JLL does not make any guarantees, warranties or representations, express or implied, as to the completeness or accuracy as to the information contained herein. Any projections, opinions, assumptions or estimates used are for example only. There may be differences between projected and actual results, and those differences may be material. JLL does not accept any liability for any loss or damage suffered by any party resulting from reliance on this information. If the recipient of this information has signed a confidentiality agreement with JLL regarding this matter, this information is subject to the terms of that agreement. ©2025. Jones Lang LaSalle IP, Inc. All rights reserved.