



PARKVIEW



# PFEIFFER PLACE AT PARKVIEW

10300 ALLIANCE ROAD | CINCINNATI, OH 45242

## CONTACT:

**Todd Pease**

+1 513 297 2506

[todd.pease@jll.com](mailto:todd.pease@jll.com)

**Michelle Klingenberg**

+1 513 719 3703

[michelle.klingenberg@jll.com](mailto:michelle.klingenberg@jll.com)

# CLASS A OFFICE SPACE FOR LEASE

# PROJECT HIGHLIGHTS



**161,629 SF  
BUILDING**



**EXCEPTIONAL VIEWS OF  
SUMMIT PARK WITH FLOOR  
TO CEILING WINDOWS**



**LEASE RATE:  
\$15.25/SF NET**



**ENERGY STAR CERTIFIED**



**OPERATING  
EXPENSES:  
\$9.89/SF**



**SIGNAGE OPPORTUNITIES  
AVAILABLE**



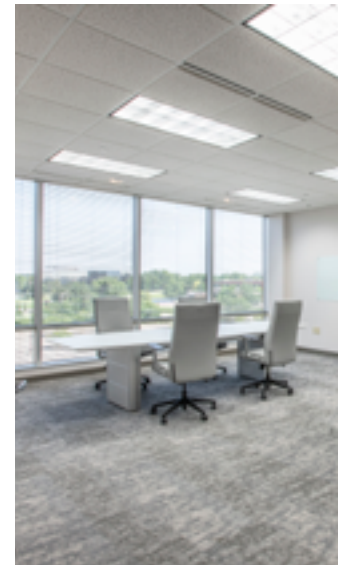
**BEAUTIFUL  
TWO-STORY  
ATRIUM**



**STATE-OF-THE-ART ON SITE  
CONFERENCE CENTER**

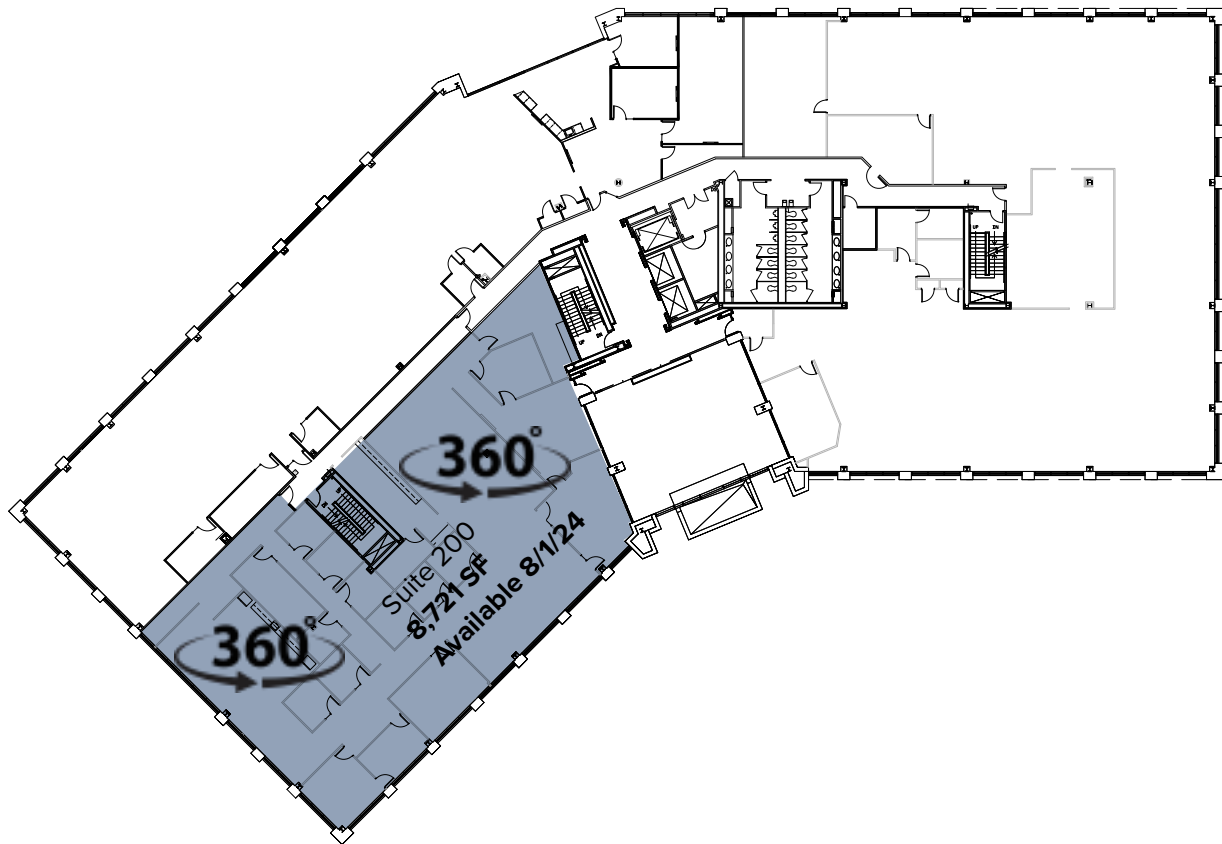


# BEAUTIFUL, UPDATED CLASS A OFFICE SPACE WITH FLEXIBLE AVAILABILITY



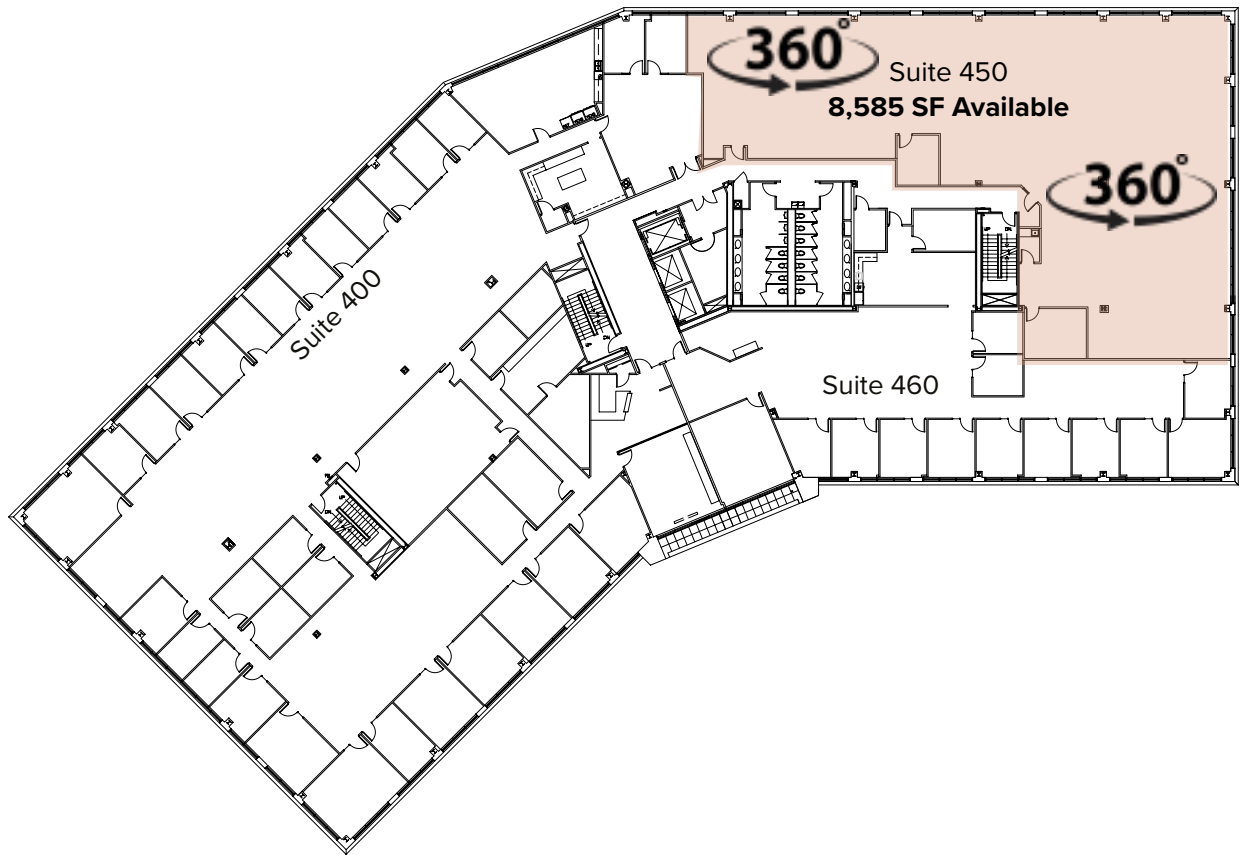
## NEW CONFERENCE ROOM COMPLETE!





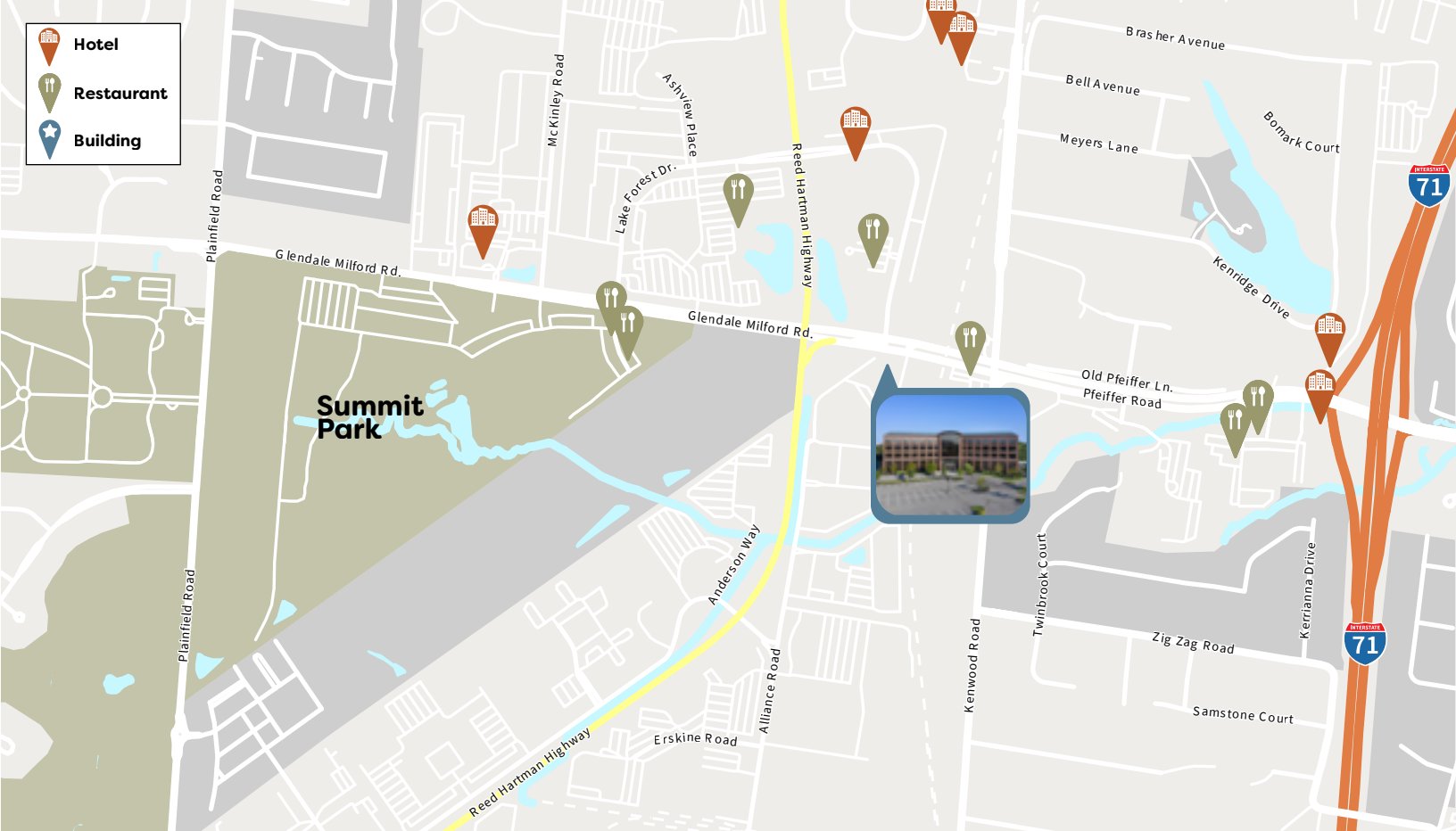
# SECOND FLOOR

---



# FOURTH FLOOR

---



## CONTACT:

**Todd Pease**

+1 513 297 2506

todd.pease@jll.com

**Michelle Klingenberg**

+1 513 719 3703

michelle.klingenberg@jll.com



Although information has been obtained from sources deemed reliable, neither Owner nor JLL makes any guarantees, warranties or representations, express or implied, as to the completeness or accuracy as to the information contained herein. Any projections, opinions, assumptions or estimates used are for example only. There may be differences between projected and actual results, and those differences may be material. The Property may be withdrawn without notice. Neither Owner nor JLL accepts any liability for any loss or damage suffered by any party resulting from reliance on this information. If the recipient of this information has signed a confidentiality agreement regarding this matter, this information is subject to the terms of that agreement. ©2021. Jones Lang LaSalle IP, Inc. All rights reserved.