

For sale

±7,427 Truck Terminal

±3.32 Acres

510 Thatcher Avenue, St. Louis, MO 63147



Property specifications

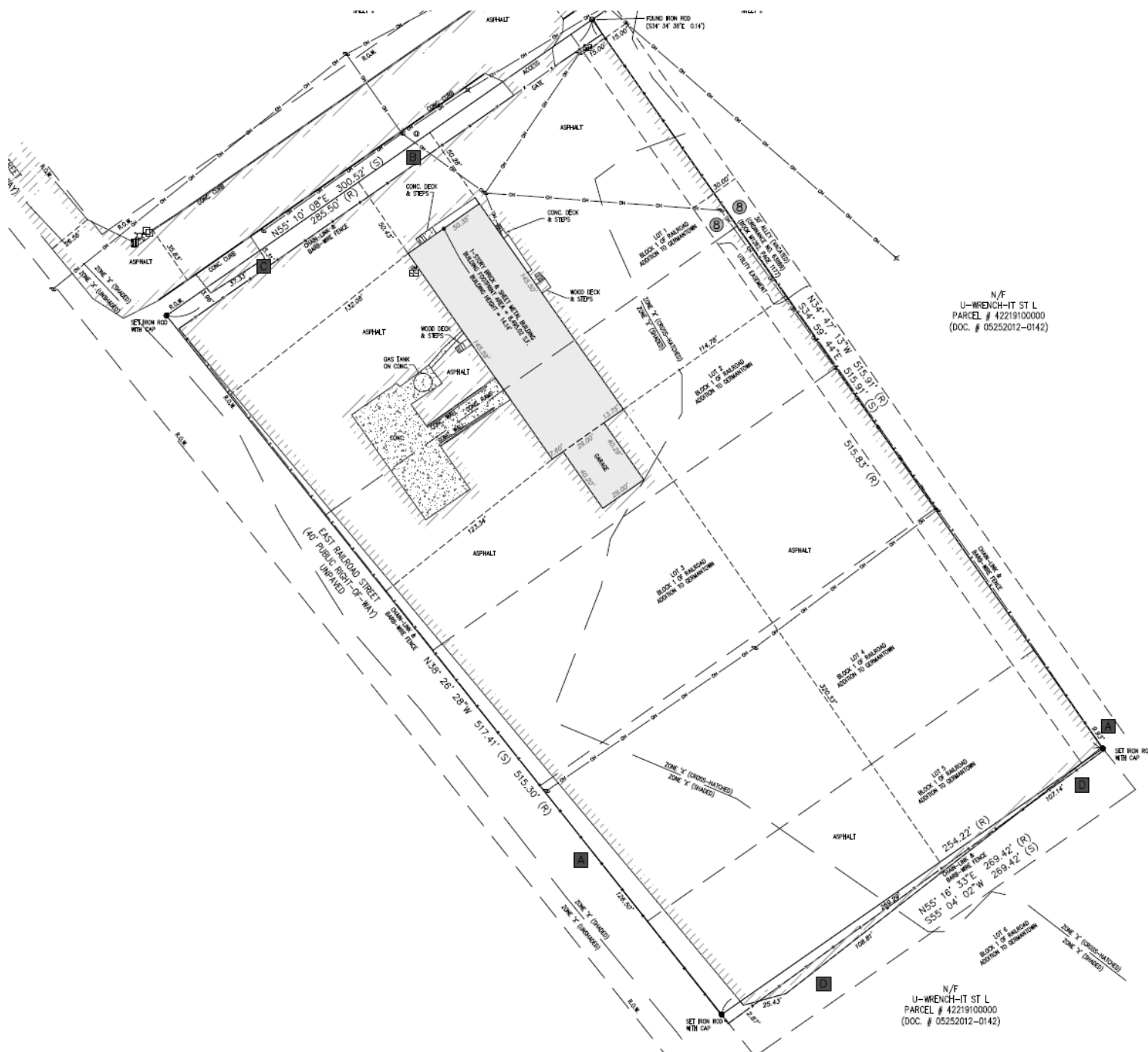
- Full Building Renovation in 2022
- 30% office finish updated in 2022
- 70% warehouse/terminal space
- 10 dock doors & 1 ramped dock door
- Fully fenced and paved lot with automated gate access
- Above ground fuel tank in place
- Zoned K “unrestricted”
- Current month to month in place income (contact broker for details)

Asking Price: Contact Broker





Location Map



Will Meehan
Senior Vice President
Will.Meehan@jll.com
+1 314 368 6201