

# For Lease



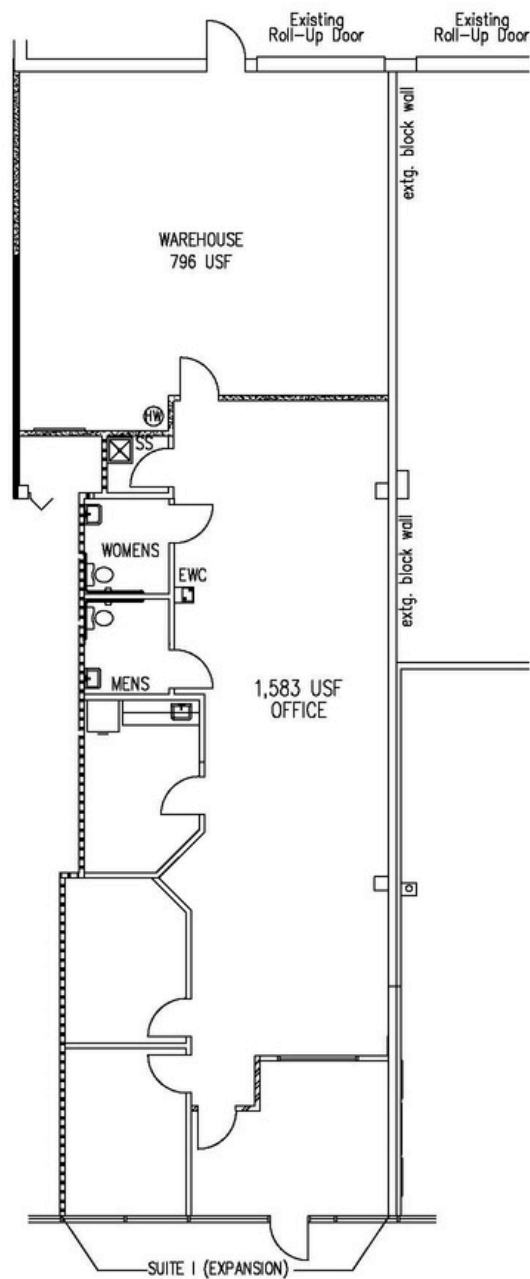
**509 Viking Drive  
Parkway West Building  
Virginia Beach, VA 23452**

## **Corporate quality office/flex space available**

Ideal location for companies requiring office, showroom, warehouse or sales and service space

- Rates starting at \$12.25 p.s.f., NNN
- Abundant parking
- Situated off Lynnhaven Parkway on Viking Drive in the heart of the Lynnhaven business corridor
- Nearby amenities within 1/2 mile +/- include: post office, regional shopping mall, banks and restaurants
- Building is located within 1/4 mile of I-264

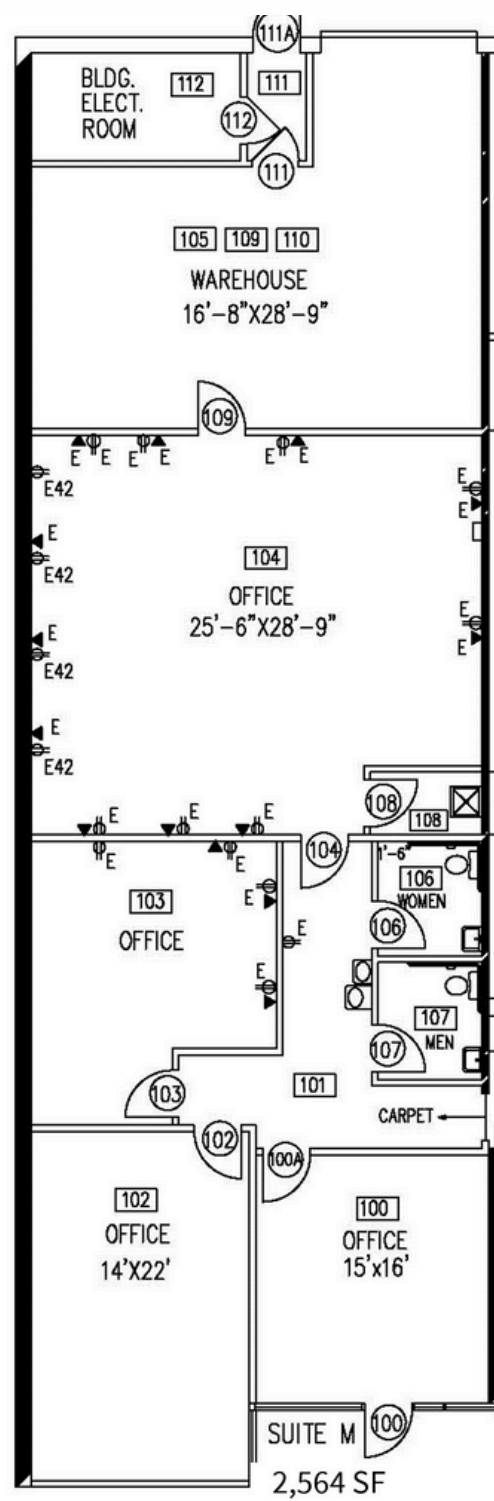
Suite I - 2,379 SF Available - 4th Quarter 2025



509 VIKING DRIVE – SUITE I  
SCALE: NTS

Availabilities	Total SF	Office SF	Warehouse SF	Loading
Suite I	2,379	1,583	796	Drive-in

Suite M - 2,564 SF Available



Availabilities	Total SF	Office SF	Warehouse SF	Loading
Suite M	2,564	1,979	585	Drive-in

## Building Fact Sheet

Located at 509 Viking Drive in Oceana West Park, Directly off Lynnhaven Parkway and Interstate 264, Parkway West is easily accessible to the Hampton Roads area:

- 2 minutes from the Virginia Beach/Norfolk Expressway
- 5 minutes from the Oceanfront
- 20 minutes from Norfolk International Airport
- 25 minutes from Downtown Portsmouth

This attractive, single-story brick structure incorporates 42,000 square feet of office and warehouse space. Constructed of brick and double-insulated reflective storefronts, Parkway West's streamlined structure is highlighted by innovative landscaping

## Property Description

<b>Site square footage:</b>	192,607 square feet
<b>Building Square footage:</b>	41,813 square feet
<b>Total leasable square footage:</b>	41,563 square feet
<b>Exterior construction:</b>	Brick veneer with metal stud backing or "cavity" wall
<b>Windows:</b>	Double insulated reflective glass
<b>Insulation:</b>	R-19 in demising walls
<b>Overhead doors:</b>	Twelve (10' x 9') roll-up
<b>roof systems:</b>	Ballasted single-ply elastomeric membrane
<b>Floor slab:</b>	5" reinforced, 250 pounds per square foot capabilities
<b>Column spacing:</b>	Varies from 26' to 35'
<b>Clear ceiling height/office:</b>	8' (flexible)
<b>Clear ceiling height/warehouse:</b>	10' to 12'
<b>Office HVAC:</b>	Electric heat pump
<b>Warehouse heat:</b>	Ceiling mounted gas
<b>Electrical:</b>	200 amp, three-phase, four wire providing 208 with 120-volt service per unit
<b>Sewer service /Water service:</b>	4" Main / 8" Main
<b>Parking ratio:</b>	4.5: 1,00 sq. ft





Contact:

Wesley Edwards, CCIM  
Senior Vice President  
wesley.edwards@jll.com  
+1 757 287 4953

999 Waterside Drive, Suite 850 | Norfolk, VA 23510 | 757 965 3006

Although information has been obtained from sources deemed reliable, neither Owner nor JLL makes any guarantees, warranties or representations, express or implied, as to the completeness or accuracy as to the information contained herein. Any projections, opinions, assumptions or estimates used are for example only. There may be differences between projected and actual results, and those differences may be material. The Property may be withdrawn without notice. Neither Owner nor JLL accepts any liability for any loss or damage suffered by any party resulting from reliance on this information. If the recipient of this information has signed a confidentiality agreement regarding this matter, this information is subject to the terms of that agreement. © 2025 Jones Lang LaSalle Brokerage, Inc. All rights reserved.