 **JLL** SEE A BRIGHTER WAY

Point 6

For Lease

24651 Center Ridge Rd / Westlake, Ohio

jll.com

Point 6

Prime Five-Story Office Space in Westlake, Ohio



Strategically positioned with exceptional access to I-90 and I-480, this five-story office building delivers the ideal workspace in Westlake's premier business district. Enjoy the perfect blend of convenience, visibility, and professional environment in this optimally located property.

Property Highlights

- Office spaces ranging from 1,500 - 15,000 SF
- 93,028 SF Total Building Size
- Rental Rate: \$18.50 per SF
- Free surface parking
- Located within close proximity to Columbia and Clague Road with access to I-90 and I-480.
- Multiple amenities in the area including; restaurants, retailers, childcare, auto services and much more.
- RTA Bus line located within walking distance of the building.

4.6

Miles to
Crocker Park

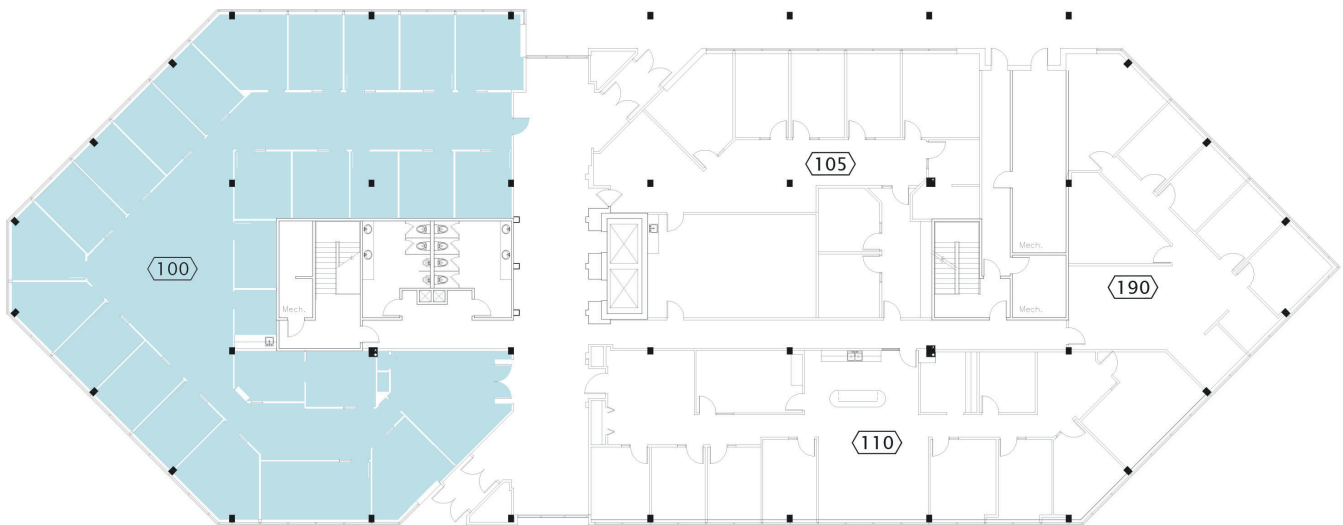
6.4

Miles to Cleveland Hopkins
International Airport

16.2

Miles to Downtown
Cleveland

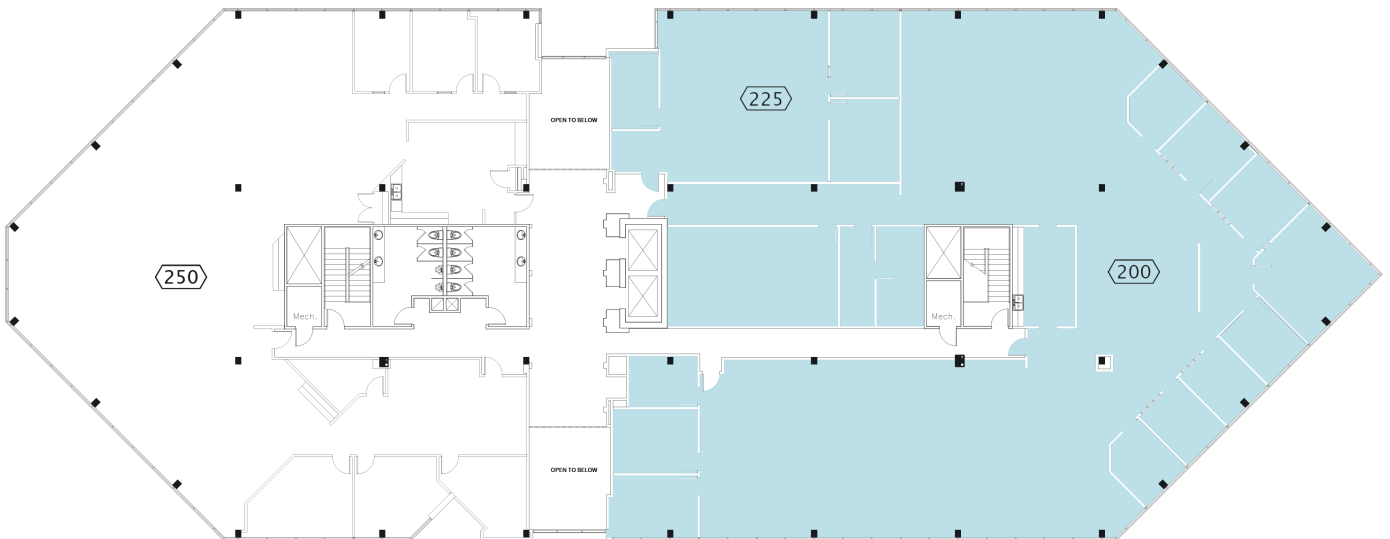
First Floor



Available Suites

- Suite 100 - 6,396 SF

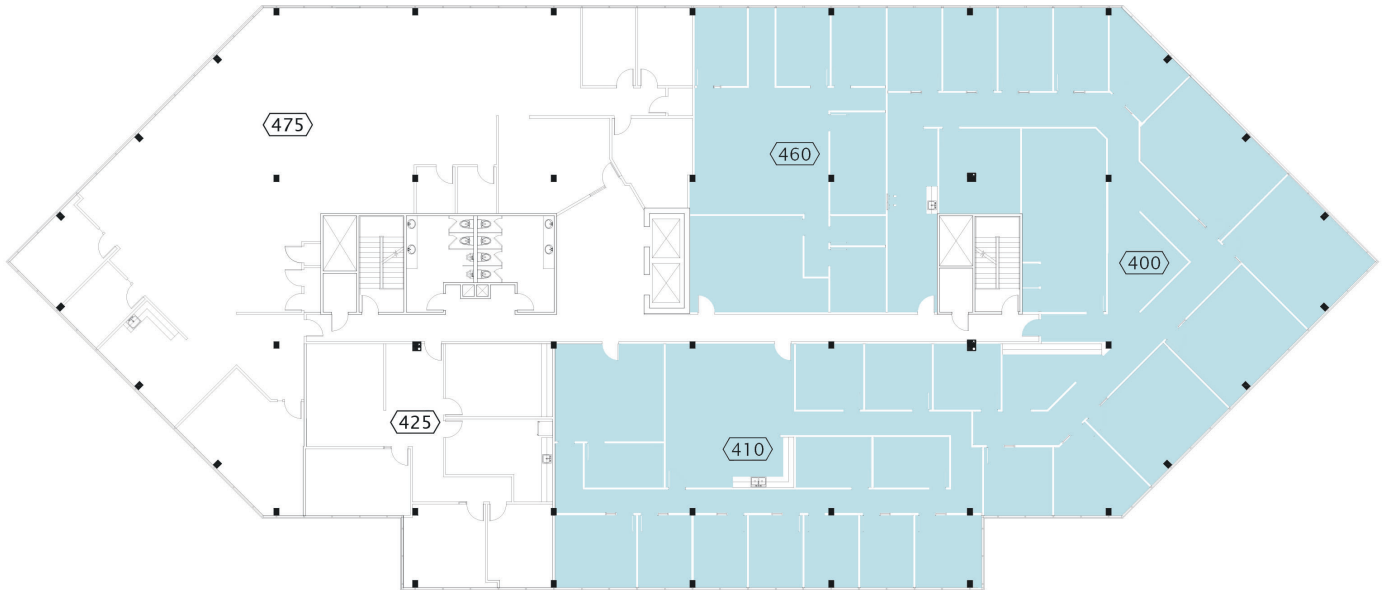
Second Floor



Available Suites

- Suite 200 - 8,686 SF
- Suite 225 - 1,643 SF

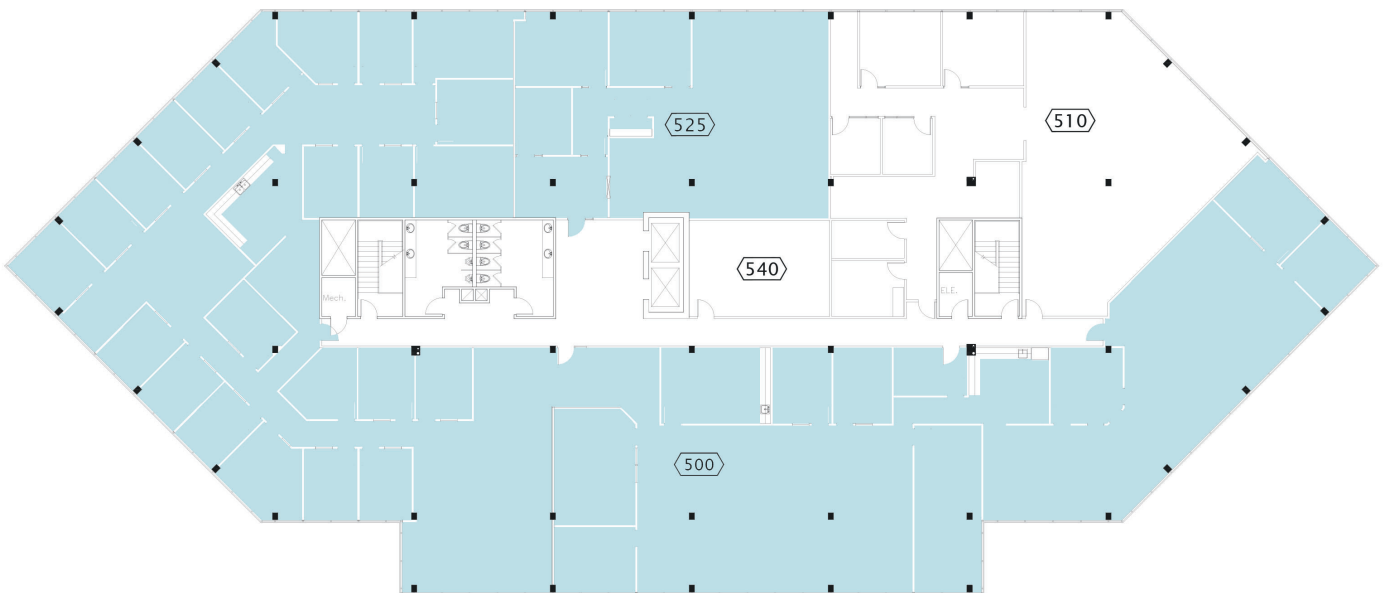
Fourth Floor



Available Suites

- Suite 400 - 5,813 SF
- Suite 410 - 3,697 SF
- Suite 460 - 2,167 SF

Fifth Floor



Available Suites

- Suite 500 - 13,255 SF
- Suite 525 - 2,363 SF

Location Map



JLL

Daniel Rose

Vice President

daniel.rose@jll.com

+1 (216) 912 4510