



427 King Street West, Toronto

Signature Lower Level Retail Corner For Lease

ALLIED |  JLL

The Gateway to King Street West

Located on the highly coveted southwest corner of King & Spadina, 427 King Street West represents a landmark retail offering at the entrance to Toronto's most exciting live, work and play neighbourhood, King Street West.

The prominent retail offering is a rare, large format opportunity in the downtown west, consisting of approximately 6,599 SF on the lower level of the building. The retail premises features beautiful brick-and-beam character attributes throughout with a signature entrance vestibule off King Street West. With ample windows and exposure on Spadina Avenue combined with a dedicated entrance on King Street West, 427 King Street West offers exceptional branding opportunities.

King West is one of Toronto's fastest growing neighborhoods and is especially popular with young urban professionals. Bolstered by the most active office and residential markets in the country, King West has experienced exponential growth over the past decade with ample mixed-used development projects under construction in the immediate area. The most notable development, The Well, is situated to the south at a short distance from the downtown's financial core.



Retail Overview

Property Details

Lower Level:	6,599 SF
Ceiling Height:	9-10 FT
Term:	5-10 years
Available:	Immediately
Net Rent:	Please Contact Listing Agents
Additional Rent:	\$28.09 PSF (est. 2025)

Highlights

- Signature lower level retail location at King & Spadina
- Dedicated entrance vestibule on King Street West
- Premises features exposed brick-and-beam characteristics and ample natural light off Spadina Avenue.
- 504 King and 510 Spadina streetcars at front door and a short distance to the Financial Core
- Excellent co-tenancies, including Baro, Fresh & Wild, MARBL, Patagonia, Elle Fitness + Social, SOMA Chocolatemaker
- High-traffic location with 36,318 pedestrians and 47,395 vehicles passing the property per day
- Wheelchair accessible

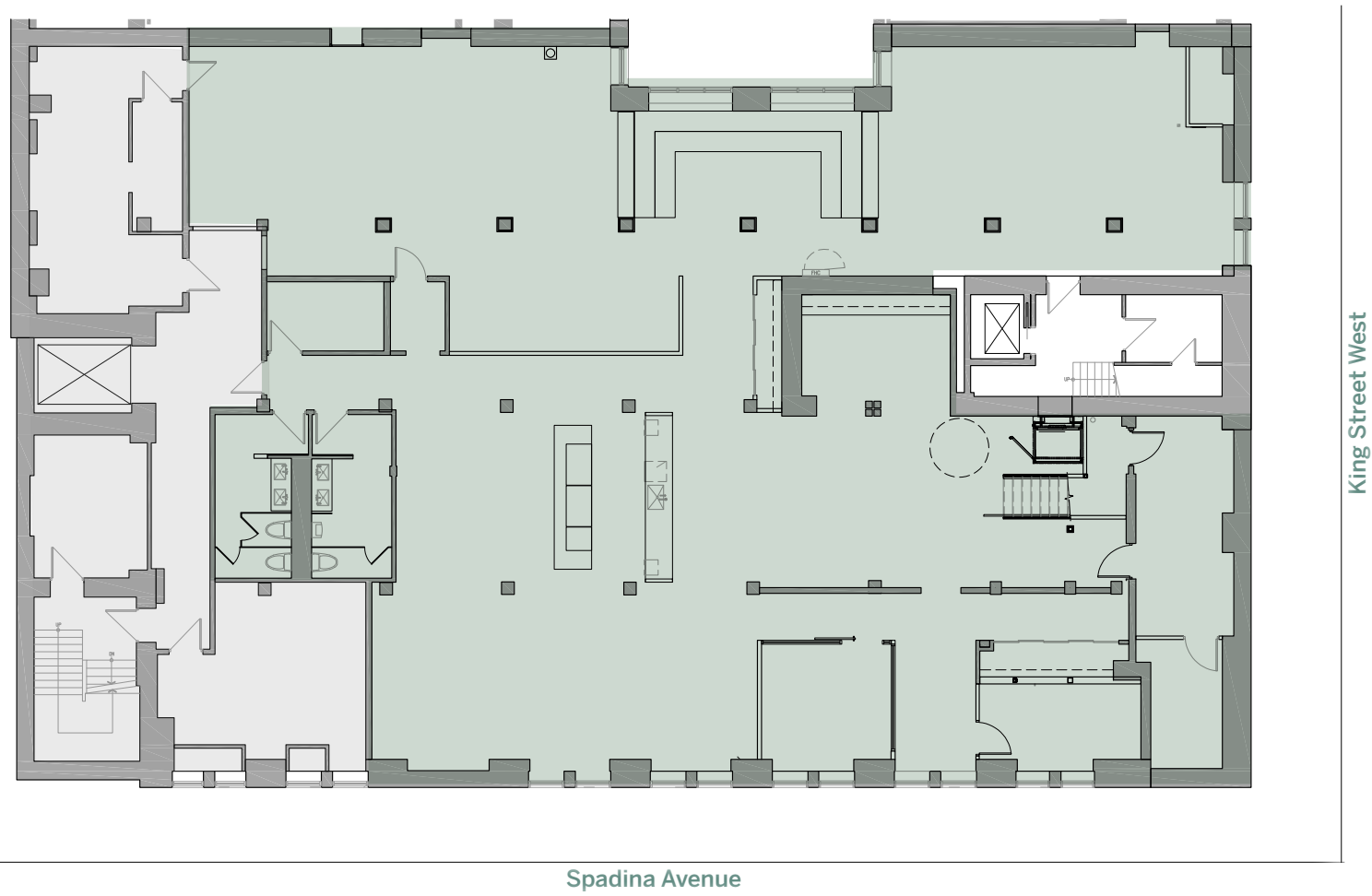


Ruby Soho



Floor Plan

Lower Level 6,599 SF



King West Retailers







Signature Lower Level Retail For Lease

427 King Street West

ALLIED



Graham Smith*

Executive Vice President
+1 416 855 0914
Graham.Smith@jll.com

Brandon Gorman**

Executive Vice President
+1 416 855 0907
Brandon.Gorman@jll.com

Austin Jones**

Associate Vice President
+1 416 304 6050
Austin.Jones@jll.com

Matthew Marshall*

Associate Vice President
+1 416 238 9925
Matthew.Marshall@jll.com

Although information has been obtained from sources deemed reliable, neither Owner nor JLL makes any guarantees, warranties or representations, express or implied, as to the completeness or accuracy as to the information contained herein. Any projections, opinions, assumptions or estimates used are for example only. There may be differences between projected and actual results, and those differences may be material. The Property may be withdrawn without notice. Neither Owner nor JLL accepts any liability for any loss or damage suffered by any party resulting from reliance on this information. If the recipient of this information has signed a confidentiality agreement regarding this matter, this information is subject to the terms of that agreement. ©2024 Jones Lang LaSalle IP, Inc. All rights reserved. **Broker. *Sales Representative.