



4174 NW Urbandale Dr
Urbandale, Iowa 50322

For lease

Flex space available in
Urbandale, Iowa

Available: 3,000 - 8,412 SF
Lease rate: \$8.75/RSF NNN

Property specifications

Availability: 3,000 - 8,412 SF

Lease rate: \$8.75/RSF NNN

- Office space: ~ 2,800 SF
- Drive-in doors (12' tall)
- Dock doors: 1
- Clear height: 20'
- Office and warehouse space has HVAC
- Ample parking on site
- Frontage on NW Urbandale Dr

Contact broker for
additional information

jll.com/des-moines

Tanner Hedstrom

Vice President

tanner.hedstrom@jll.com

+1 515 745 2734

Austin Hedstrom, SIOR

Executive Vice President

austin.hedstrom@jll.com

+1 515 414 1767

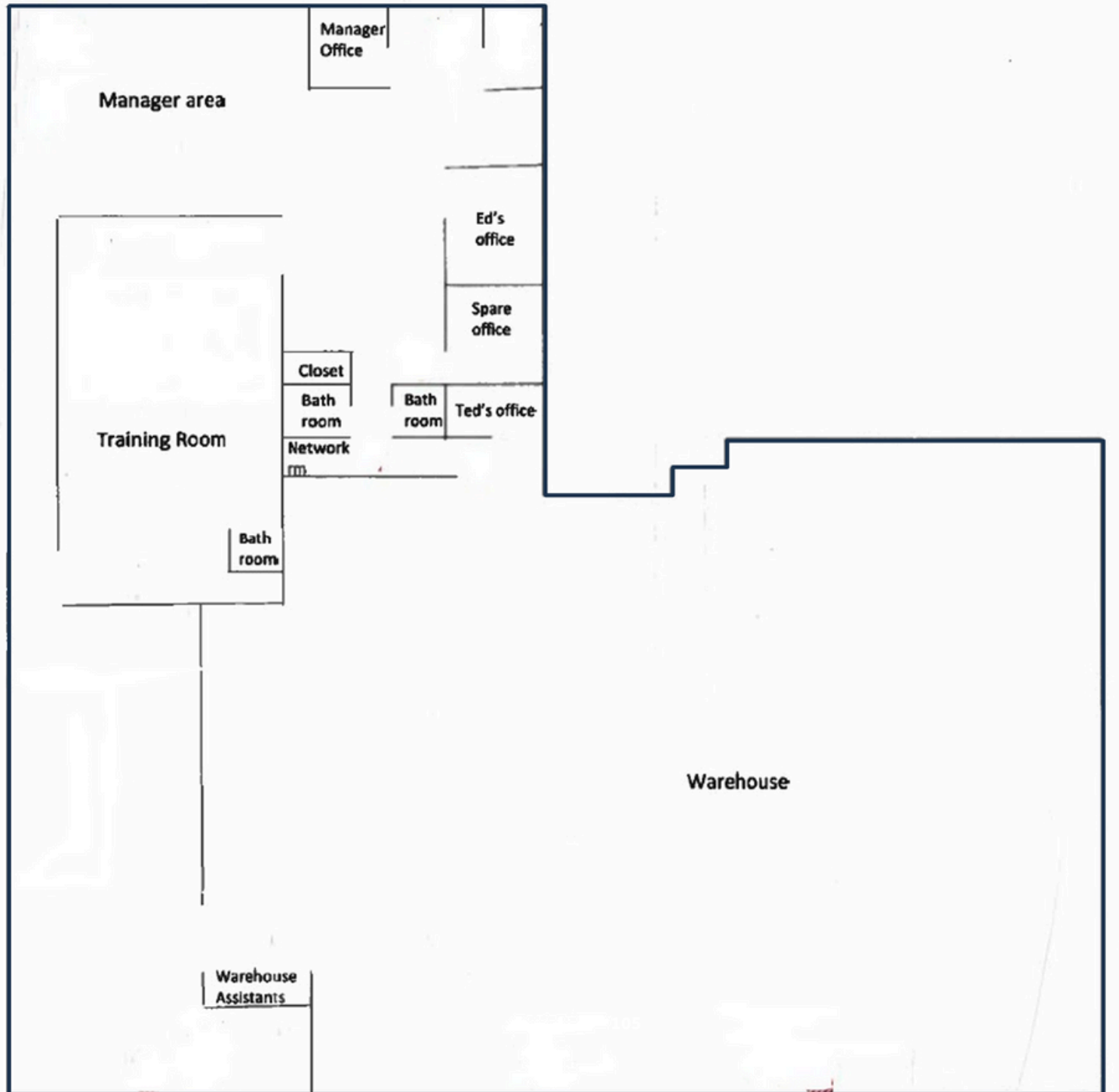
Thomas Edwards

Analyst

thomas.edwards@jll.com

+1 515 802 4684

Floor plan

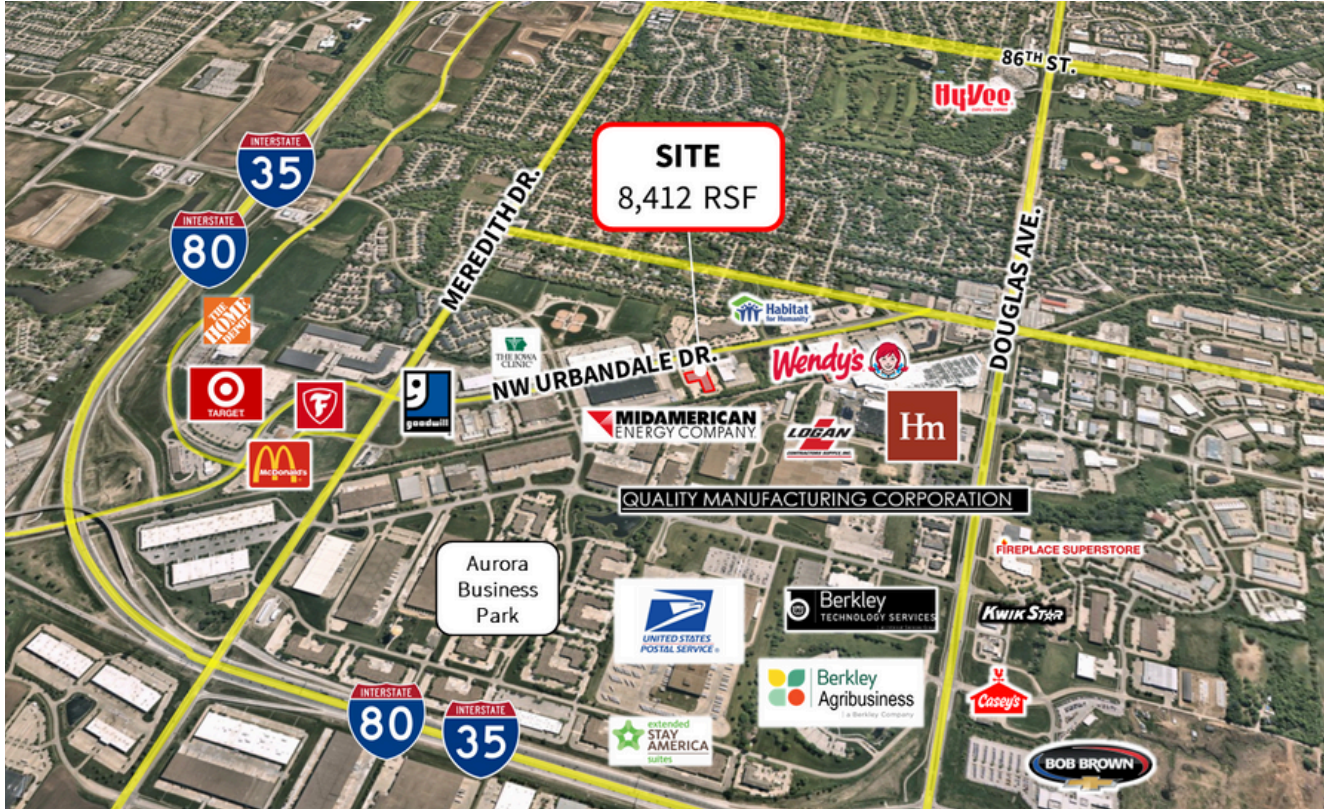


Images



For lease

4174 NW Urbandale Drive | Urbandale, Iowa 50322



Tanner Hedstrom

tanner.hedstrom@jll.com

+1 515 745 2734

Austin Hedstrom, SIOR

austin.hedstrom@jll.com

+1 515 414 1767

Thomas Edwards

thomas.edwards@jll.com

+1 515 802 4684

jll.com/des-moines

Although information has been obtained from sources deemed reliable, neither Owner nor JLL makes any guarantees, warranties or representations, express or implied, as to the completeness or accuracy as to the information contained herein. © 2023 Jones Lang LaSalle IP, Inc. All rights reserved.

Demographics

	<u>1 Mile</u>	<u>3 Miles</u>	<u>5 Miles</u>
Population	4,251	54,146	186,662
Households	1,807	21,761	75,890
Average HH Income	\$135,321	\$117,347	\$111,761