

For sale

±69,356 SF Warehouse on
±4.2 Acres

6038 North Lindbergh Boulevard, Hazelwood, MO 63042

Jones Lang LaSalle Americas, Inc.

Amenities and advantages

Property specifications

Building size	69,356 SF
Acres	4.2
Dock doors	11 docks with levelers
Drive-in doors	2 doors in new repair garage
Ceiling height	20'-22'
Lighting	New LED lighting
Fire suppression	Partial wet sprinkler
Power	Heavy power

Outside storage is available or room for building expansion

Sale Price: \$6,000,000



4.2

Acres

69K

Square footage

2

Drive-in doors

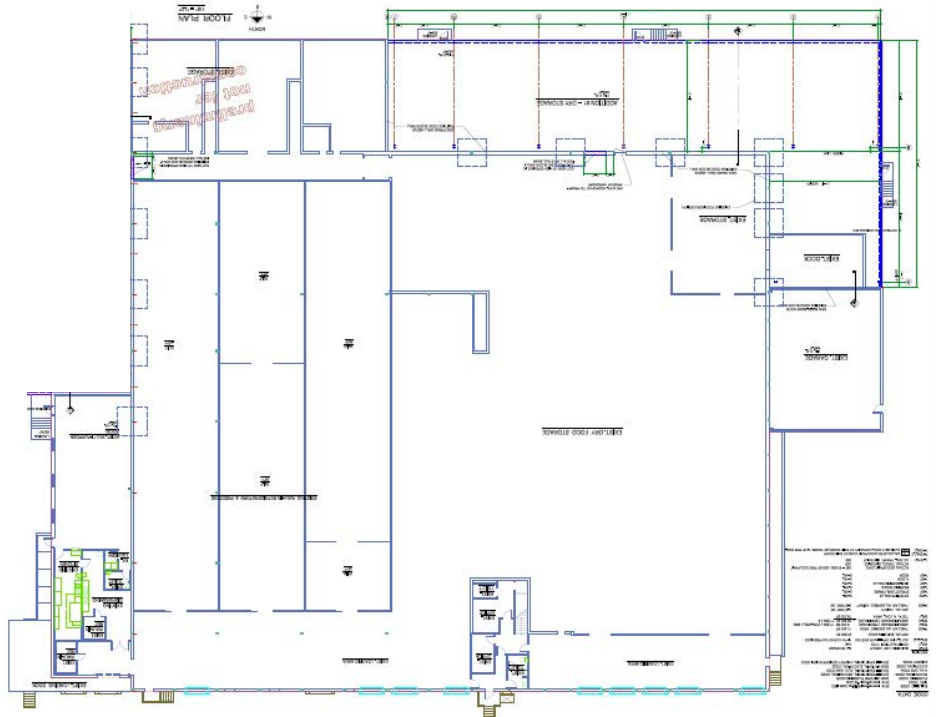
11

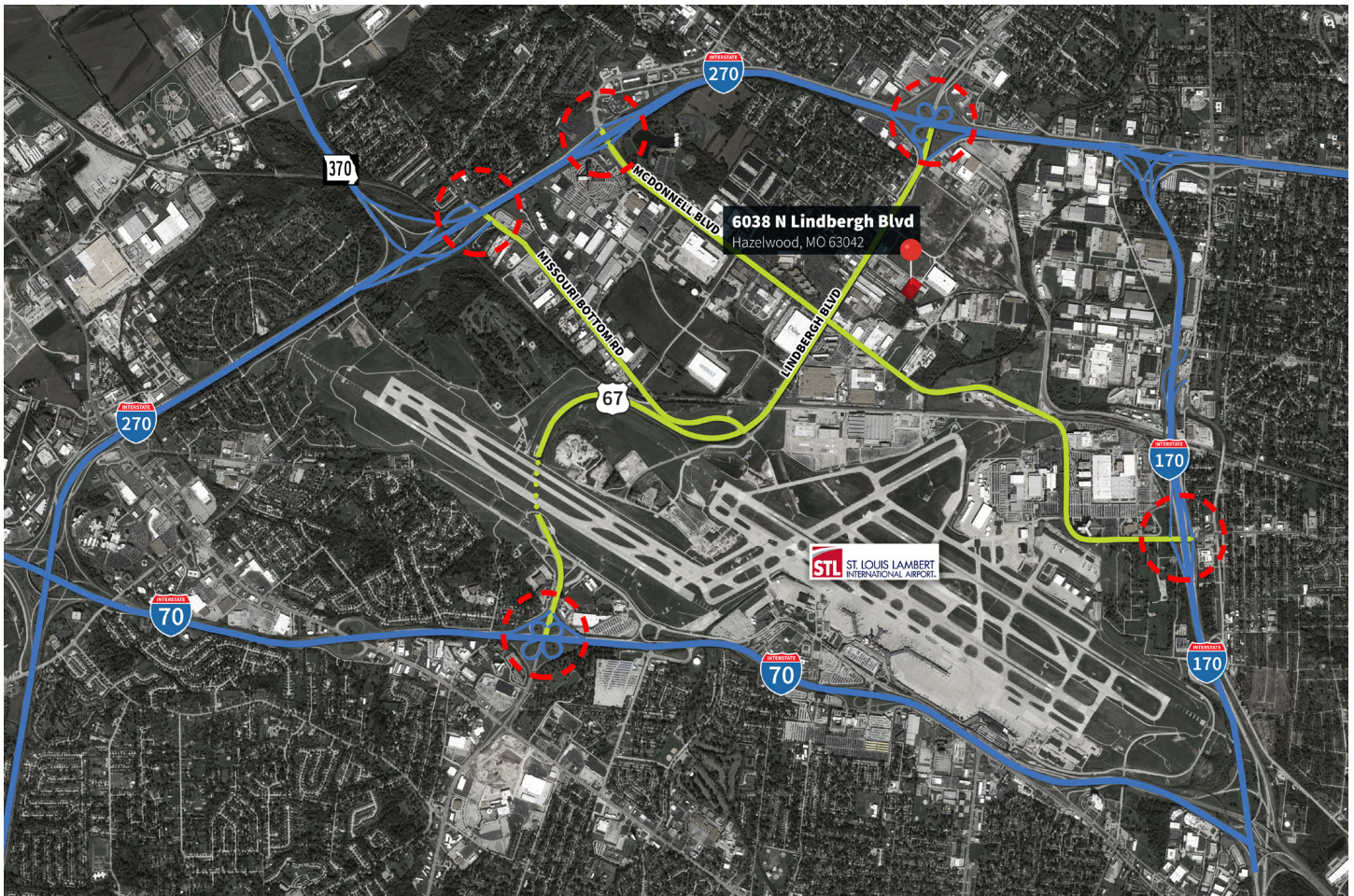
Dock doors

Floor plan

Details

- 69,356 SF
- 20'-22' ceiling height
- 2 doors in new repair garage
- 11 docks with levelers





Conveniently situated in Hazelwood, this property offers easy access to major transportation routes, including I-70, I-170 and I-270. This provides excellent connectivity to various destinations and St. Louis Lambert International Airport.

1 mi
to I-270

2 mi
to I-170

3.5 mi
to I-70

5 mi
to Lambert Airport

Will Meehan
Senior Vice President
+1 314 368 6201
will.meehan@jll.com

jll.com/st-louis