



**OFFICE SPACE FOR LEASE**

**535** THURLOW  
STREET

TURN-KEY SOLUTIONS

**ANDREW ASTLES**

Associate Vice President  
+1 604 998 6045  
[andrew.astles@jll.com](mailto:andrew.astles@jll.com)

**SCOTT MACDONALD\***

Executive Vice President  
+1 604 998 6020  
[scott.macdonald@jll.com](mailto:scott.macdonald@jll.com)

THE PRINTING HOUSE

PARKING



# Overview

535 Thurlow Street is situated on the west side of Thurlow Street between Melville and West Hastings Streets, in the heart of Vancouver's Central Business District.

Several amenities compliment the area including restaurants, hotels, several financial institutions and the Bentall Centre and Burrard Station within one block.

## ASKING RENT

Contact Agents for Details

## ADDITIONAL RENT

\$16.34 (2025) + management fee

## UNDERGROUND PARKING

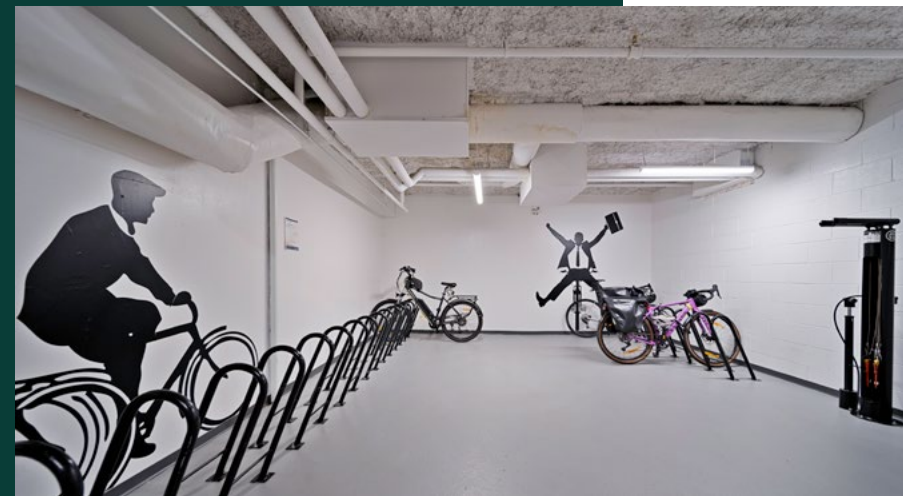
Available





# Availabilities

UNIT/SUITE #	LEASE TYPE	SQ FT	POSSESSION DATE	
800	Direct	1,974	Immediately	<a href="#">DETAILS</a>
802	Direct	2,285	Immediately	<a href="#">DETAILS</a>

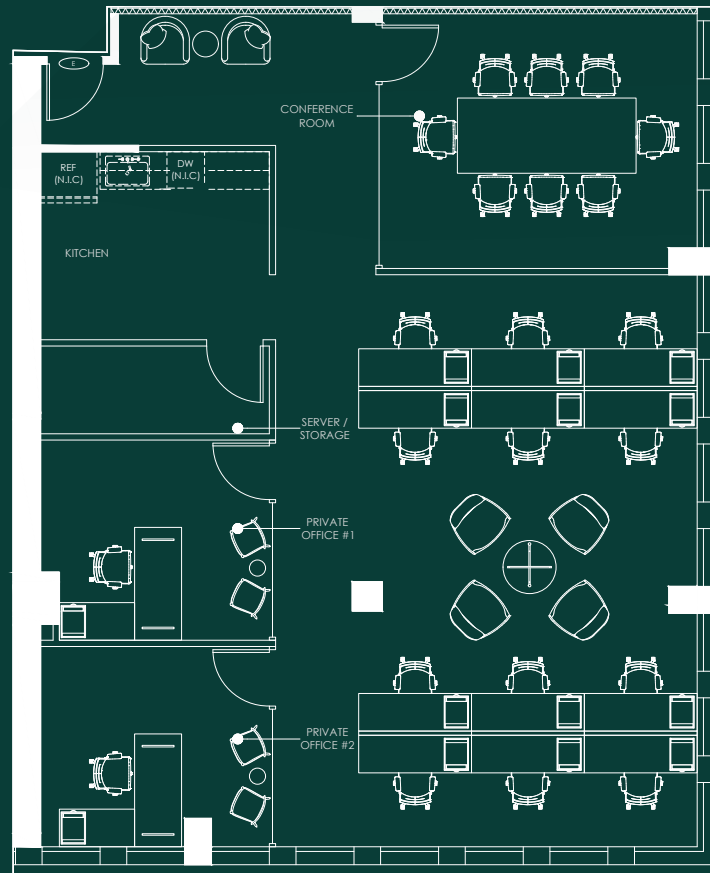


## SUITE

800

1,974 SF

Under construction, this show suite is planned to be delivered around May 2025. It features modern improvements consisting of open-concept ceilings with ceiling tiles in the offices/boardroom for sound dampening. Two offices, a boardroom, kitchenette and sever room with ample open area for workstations.

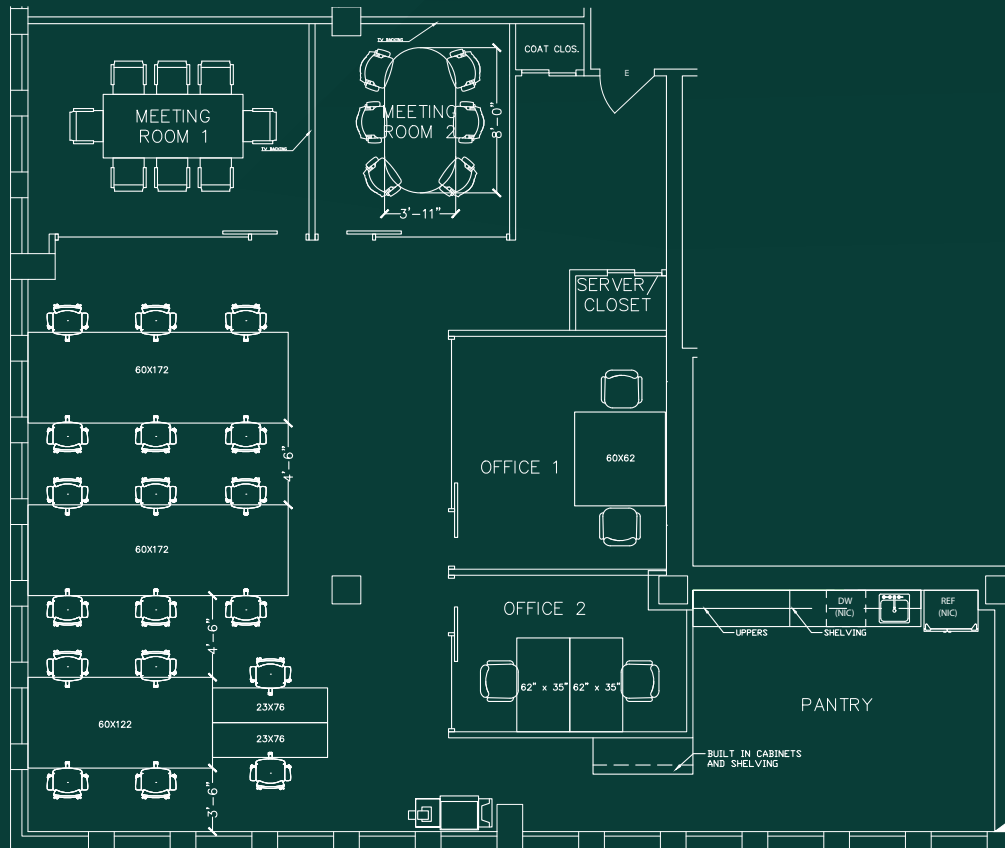


SUITE

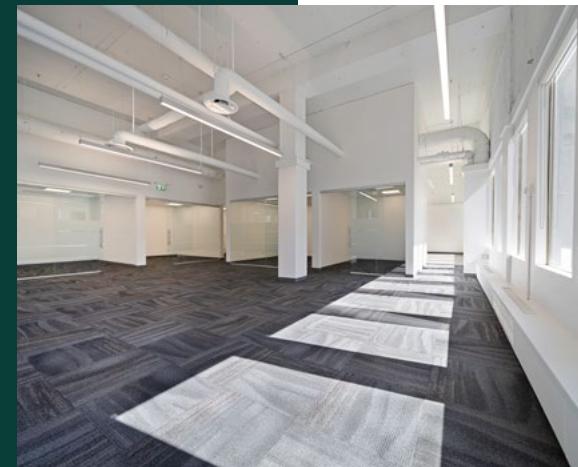
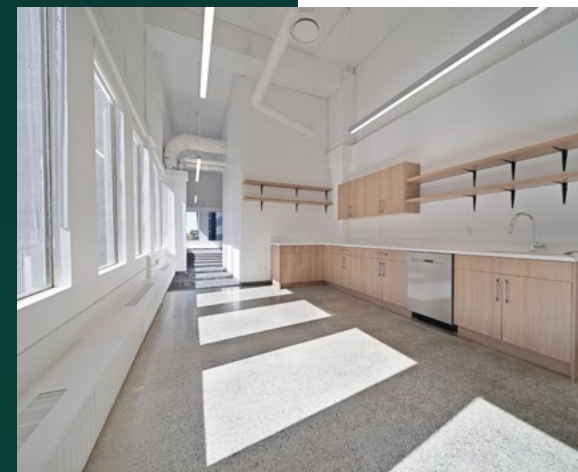
802

2,285 SF

Available Immediately



\*FURNITURE AND APPLIANCES NOT INCLUDED

SCALE:  $\frac{3}{16}" = 1'-0"$ 



# Leasing Inquiries

## ANDREW ASTLES

Associate Vice President

+1 604 998 6045

andrew.astles@jll.com

## SCOTT MACDONALD\*

Executive Vice President

+1 604 998 6020

scott.macdonald@jll.com

Although information has been obtained from sources deemed reliable, neither Owner nor JLL makes any guarantees, warranties or representations, express or implied, as to the completeness or accuracy as to the information contained herein. Any projections, opinions, assumptions or estimates used are for example only. There may be differences between projected and actual results, and those differences may be material. The Property may be withdrawn without notice. Neither Owner nor JLL accepts any liability for any loss or damage suffered by any party resulting from reliance on this information. If the recipient of this information has signed a confidentiality agreement regarding this matter, this information is subject to the terms of that agreement.

©2024 Jones Lang LaSalle Real Estate Services, Inc. All rights reserved. | [www.jll.ca](http://www.jll.ca) | \*Personal Real Estate Corporation

