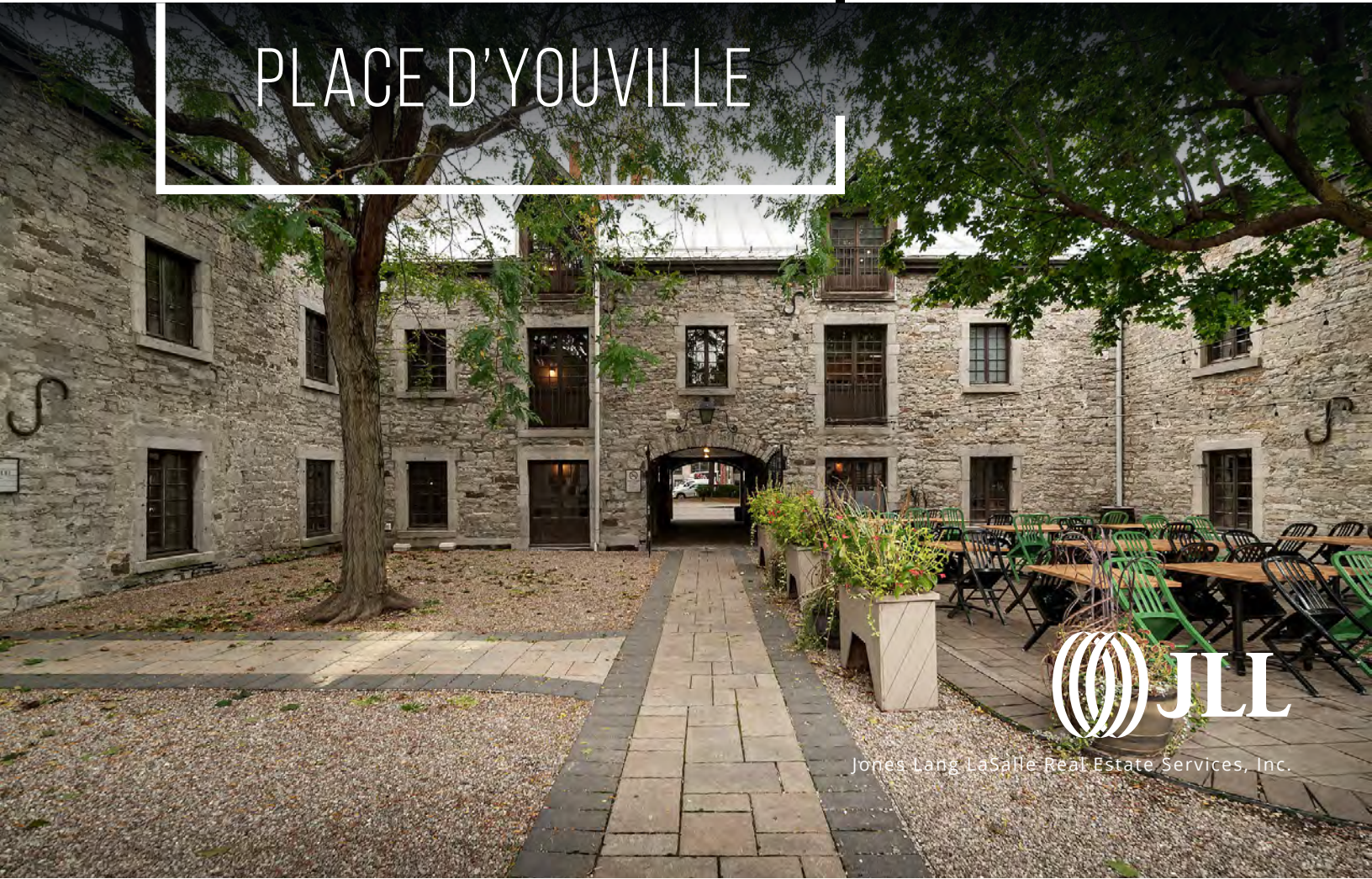


FOR SUBLEASE

**5,104 SF (DIVISIBLE)
PLUG & PLAY
LOFT STYLE OFFICE SPACE**

300

PLACE D'YOUVILLE



Jones Lang LaSalle Real Estate Services, Inc.

300 PLACE D'YOUVILLE

Plug and play space located in the heart of Old Montreal, close to Square-Victoria metro Station and Bixi terminals.



HIGHLIGHTS



**HISTORIC PROPERTY
KNOWN AS YOUVILLE
STABLES**



SPRINKLER SYSTEM



**VIEWS ONTO INTERIOR
COURTYARD**





SPACE OVERVIEW

Suite:

Suite C10 - 5,104 SF
Flexible space available:
• Suitable for co-working
• Divisible from 2,000 SF

Sublease Term:

December 31st, 2027

Availability:

3 months notice

Gross Rent:

\$20.00 PSF

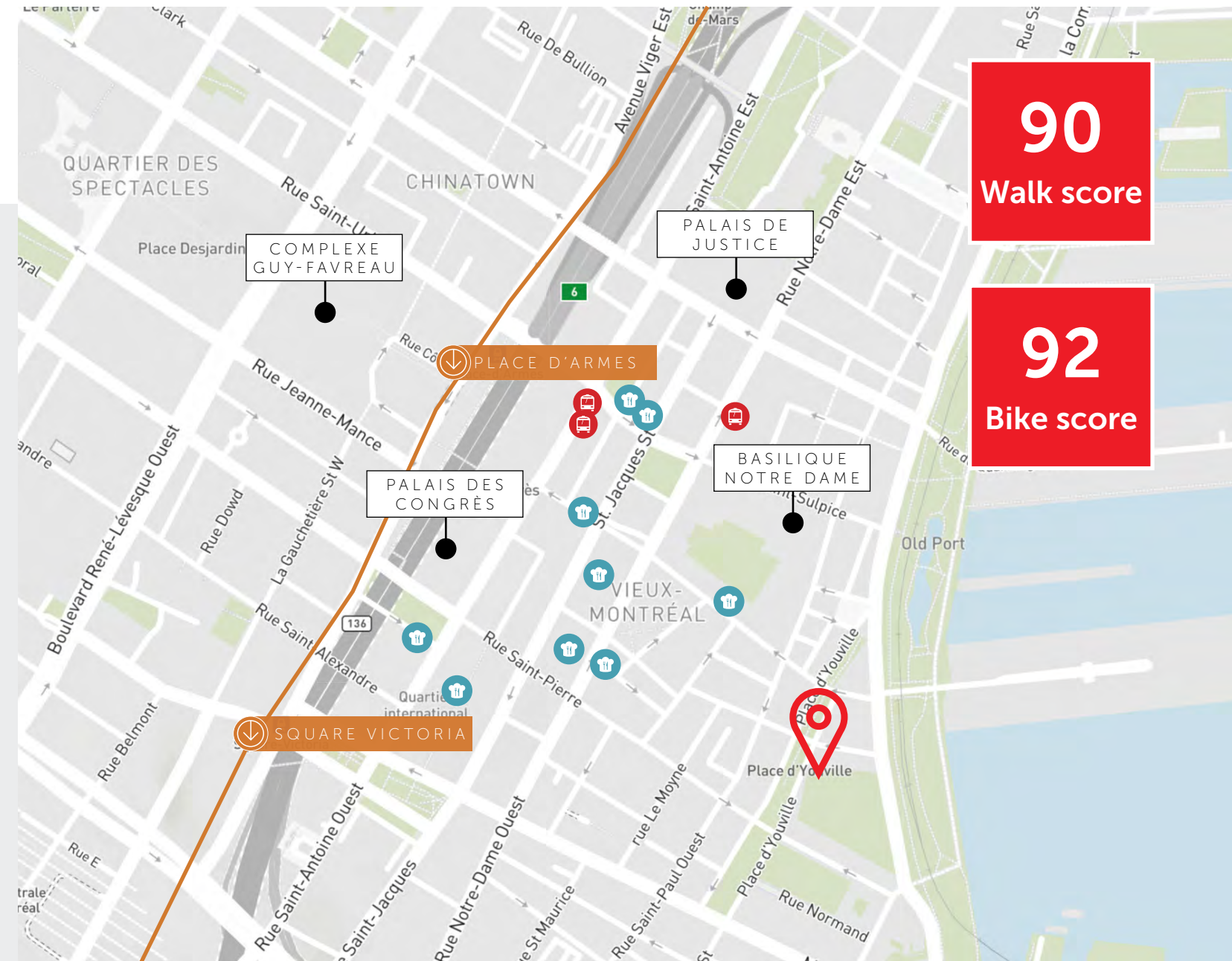
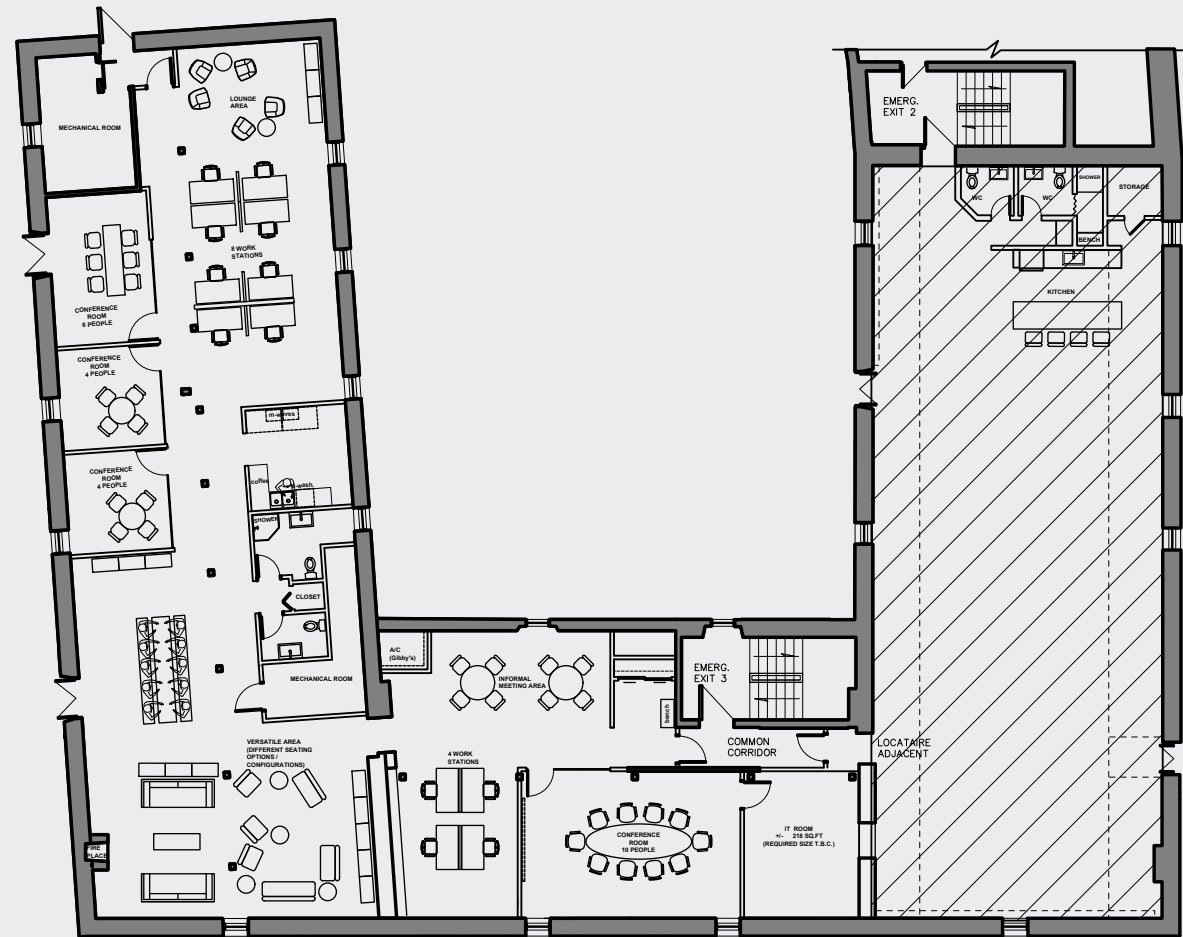
Additional Rent:

Included - Daily cleaning excluded





SUITE C10



AREA ACCESSIBILITY

METRO

 8 minute walk: Square-Victoria-OACI Metro Station

BUS

 715, 75, 61, 35

FOR MORE INFORMATION, PLEASE CONTACT:

Kevin Lavigne*

Executive Vice President

Real Estate Broker

Jones Lang Lasalle Real Estate Services, Inc. (Real Estate Agency)

+1 514 699 7747

kevin.lavigne@jll.com

**Real Estate Broker acting with the business corporation Services Immobiliers
Kevin Lavigne Inc.*

Erika Ricupero

Associate

Real Estate Broker

Jones Lang Lasalle Real Estate Services, Inc. (Real Estate Agency)

+1 514 838 8710

erika.ricupero@jll.com

Copyright © Jones Lang LaSalle IP, Inc. 2025

This publication is the sole property of Jones Lang LaSalle and must not be copied, reproduced or transmitted in any form or by any means, either in whole or in part, without the prior written consent of Jones Lang LaSalle. The information contained in this publication has been obtained from sources generally regarded to be reliable. However, no representation is made, or warranty given, in respect of the accuracy of this information. We would like to be informed of any inaccuracies so that we may correct them. Jones Lang LaSalle does not accept any liability in negligence or otherwise for any loss or damage suffered by any party resulting from reliance on this publication. Jones Lang LaSalle Americas, Inc., license # 5674-7835-01.

Any opinion or estimate of value of any asset in this presentation is based upon the high-level preliminary review by JLL. It is not the same as the opinion of value in an appraisal developed by a licensed appraiser under the Uniform Standards of Professional Appraisal Practice. JLL expressly disclaims any liability for any reliance on any opinion or estimate of value in this presentation by any party.

