



For lease

Bryan Dairy East

7300 - 7340 Bryan Dairy Rd
Largo, FL 33777

Property Highlights

- Class A industrial business park
- Mid-Pinellas County with frontage on Bryan Dairy Road
- Tilt-wall construction
- Sprinklered
- 100% air-conditioned
- 3-phase power

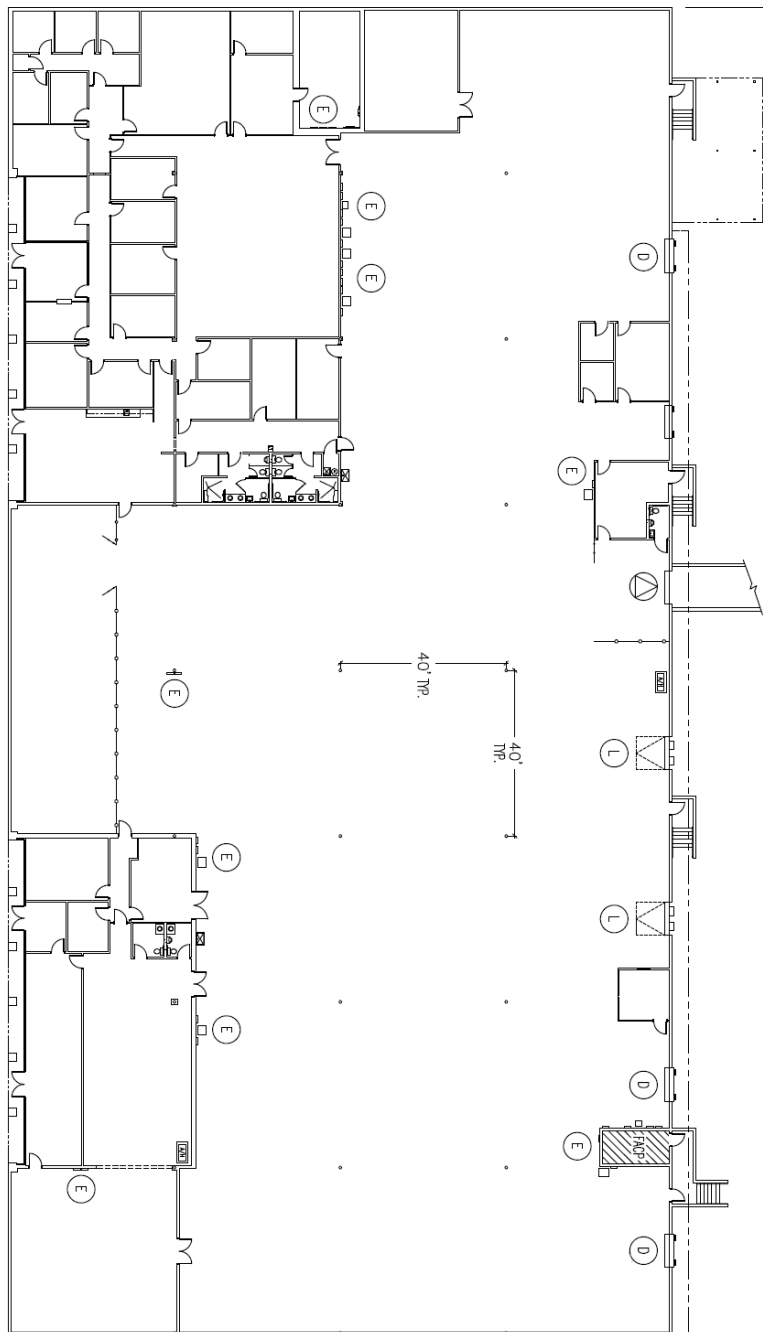
Class A Industrial Pinellas County

**Bryan Dairy East
Building 3
7320 Bryan Dairy Road**

Total SF: 51,250

Office SF: 15,914

Warehouse SF: 35,336

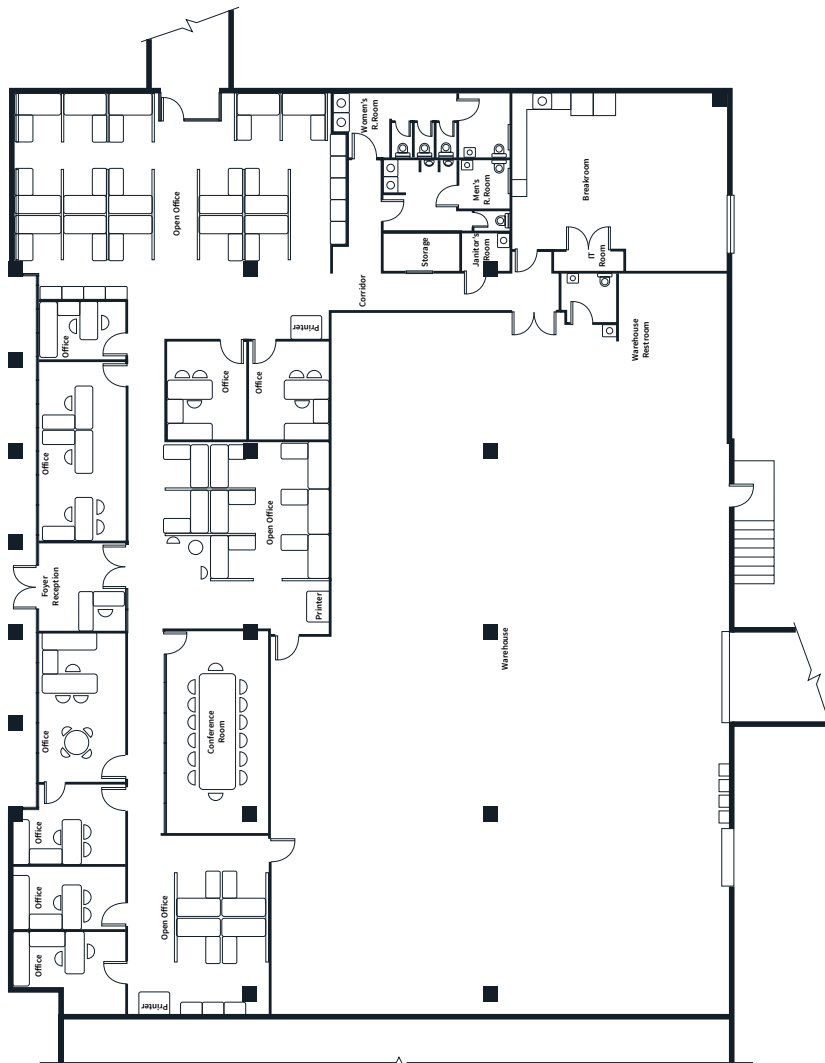


Space Highlights

- Sprinkled
- Lights: LED
- Loading: Five (5) dock-high, two (2) levelers, one (1) ramp
- Clear height: 20' 1" - 23' 5"
- Column spacing: 40' x 40'
- Building depth: 160'
- Power: 3-phase, 1440 amps, 277/480V
- Warehouse is fully air-conditioned

**Bryan Dairy East
Building 4
7300 Bryan Dairy Road**

Total SF: 12,500



Space Highlights

- Sprinklers: Wet
- Lights: LED
- Loading: One (1) dock-high door, one (1) drive-in door
- Building depth: 100'
- Power: 3-phase
- Multiple open office space areas, eight (8) private offices, conference room, breakroom, men's and women's restrooms in office area, warehouse restroom
- Frontage on Bryan Dairy Rd.

Bryan Dairy East

2025 Demographics

Population

42,405	264,840	719,144
2 miles	5 miles	10 miles

Households

18,080	120,575	337,605
2 miles	5 miles	10 miles

Avg. household income

\$105,183	\$91,731	\$103,006
2 miles	5 miles	10 miles

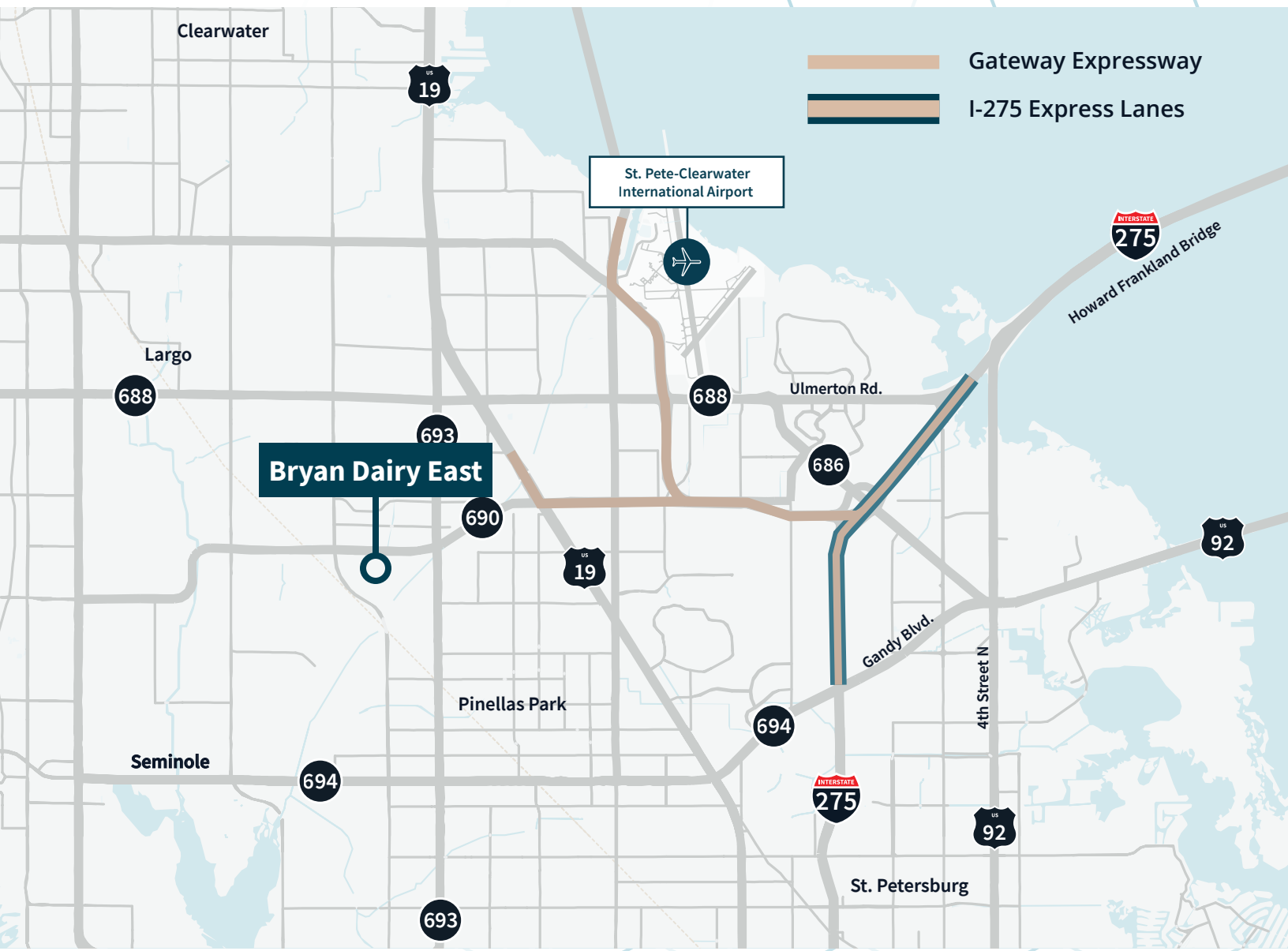
Daytime employees

30,172	166,759	410,389
2 miles	5 miles	10 miles

Daytime businesses

2,479	13,725	38,287
2 miles	5 miles	10 miles





John Dunphy, CCIM, SIOR
Executive Managing Director
johnc.dunphy@jll.com
+1 813 387 1312

Harrison Pithers
Associate
harrison.pithers@jll.com
+1 813 610 0239

jll.com

Jones Lang LaSalle Americas

Although information has been obtained from sources deemed reliable, JLL does not make any guarantees, warranties or representations, express or implied, as to the completeness or accuracy as to the information contained herein. Any projections, opinions, assumptions or estimates used are for example only. There may be differences between projected and actual results, and those differences may be material. JLL does not accept any liability for any loss or damage suffered by any party resulting from reliance on this information. If the recipient of this information has signed a confidentiality agreement with JLL regarding this matter, this information is subject to the terms of that agreement. ©2025 Jones Lang LaSalle Brokerage, Inc. All rights reserved.