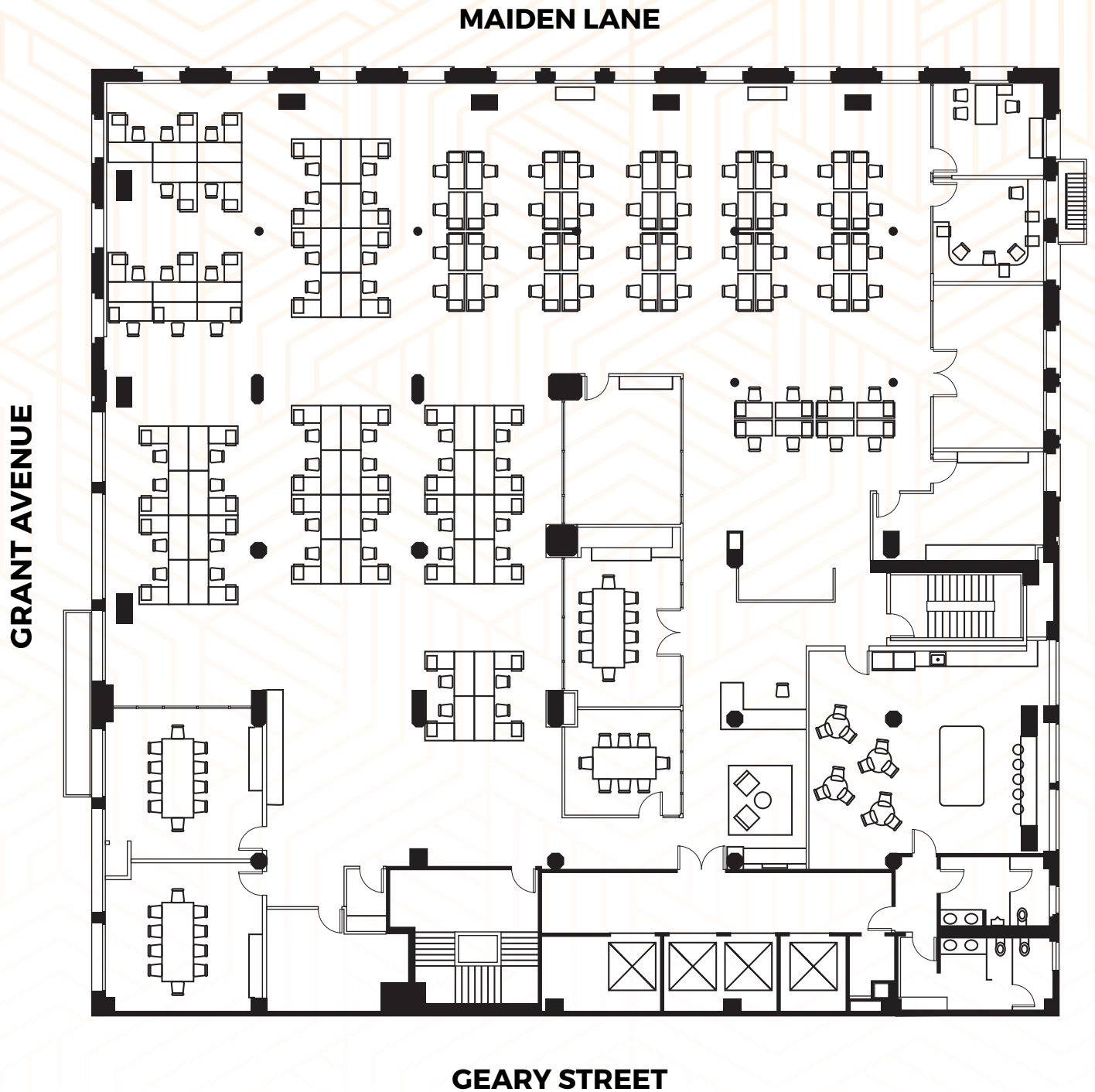


FLOOR-3

13,662 SF



- 9 Meeting/Conference Rooms
- All hands area
- Large kitchen and break area
- Large open area
- Open ceiling with clouds

FLOOR-5

13,530 SF

MUST BE LEASED WITH FLOORS 6 & 7 FOR 31,699 RSF

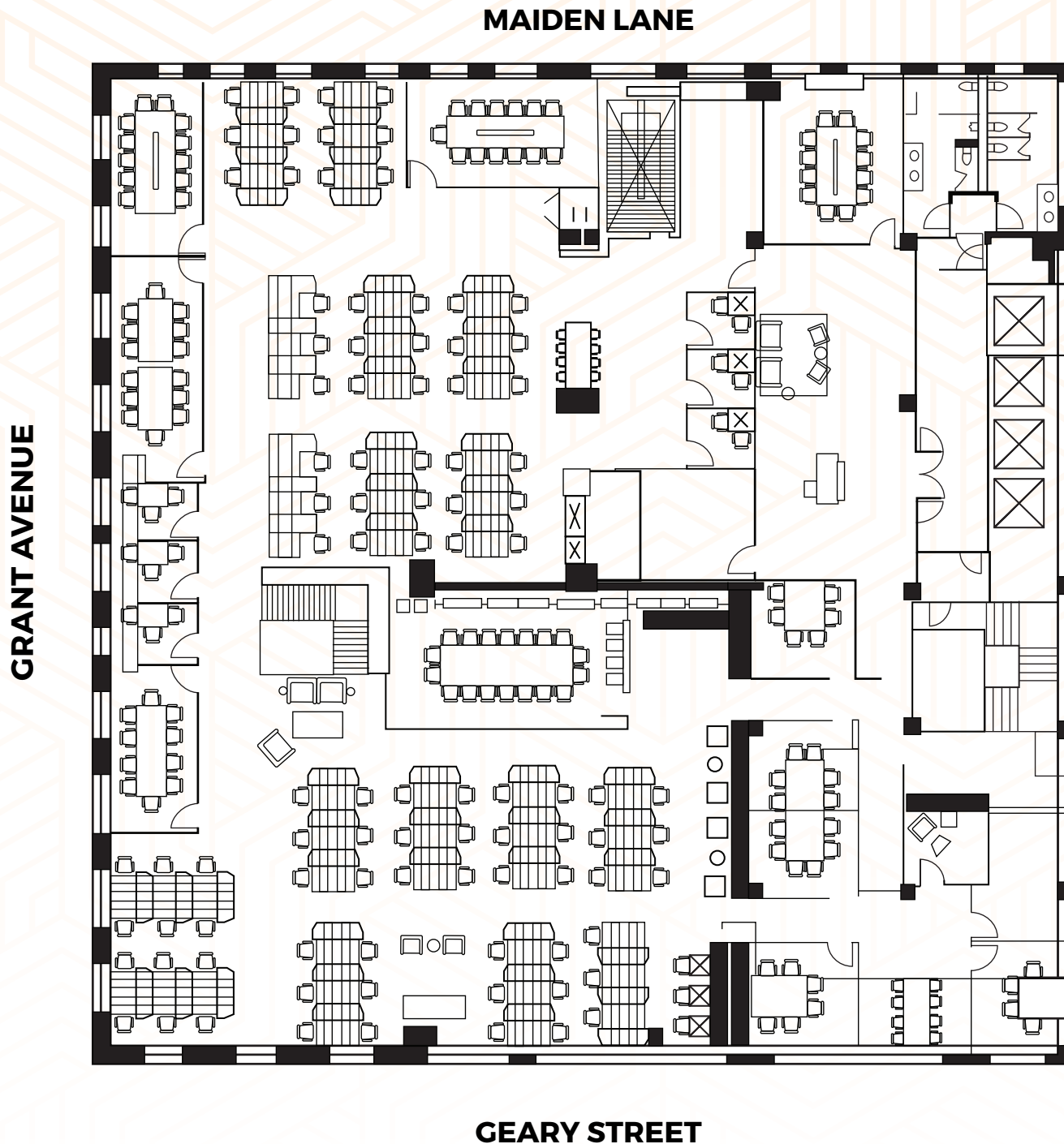


- 124 workstations
- Large 12-person conference room
- 12 meeting rooms plus collaboration areas
- Kitchen and cafe
- Prayer room, wellness room and gender neutral restrooms
- Interconnecting staircase to 6th floor

FLOOR-6

13,530 SF

MUST BE LEASED WITH FLOORS 5 & 7 FOR 31,699 RSF

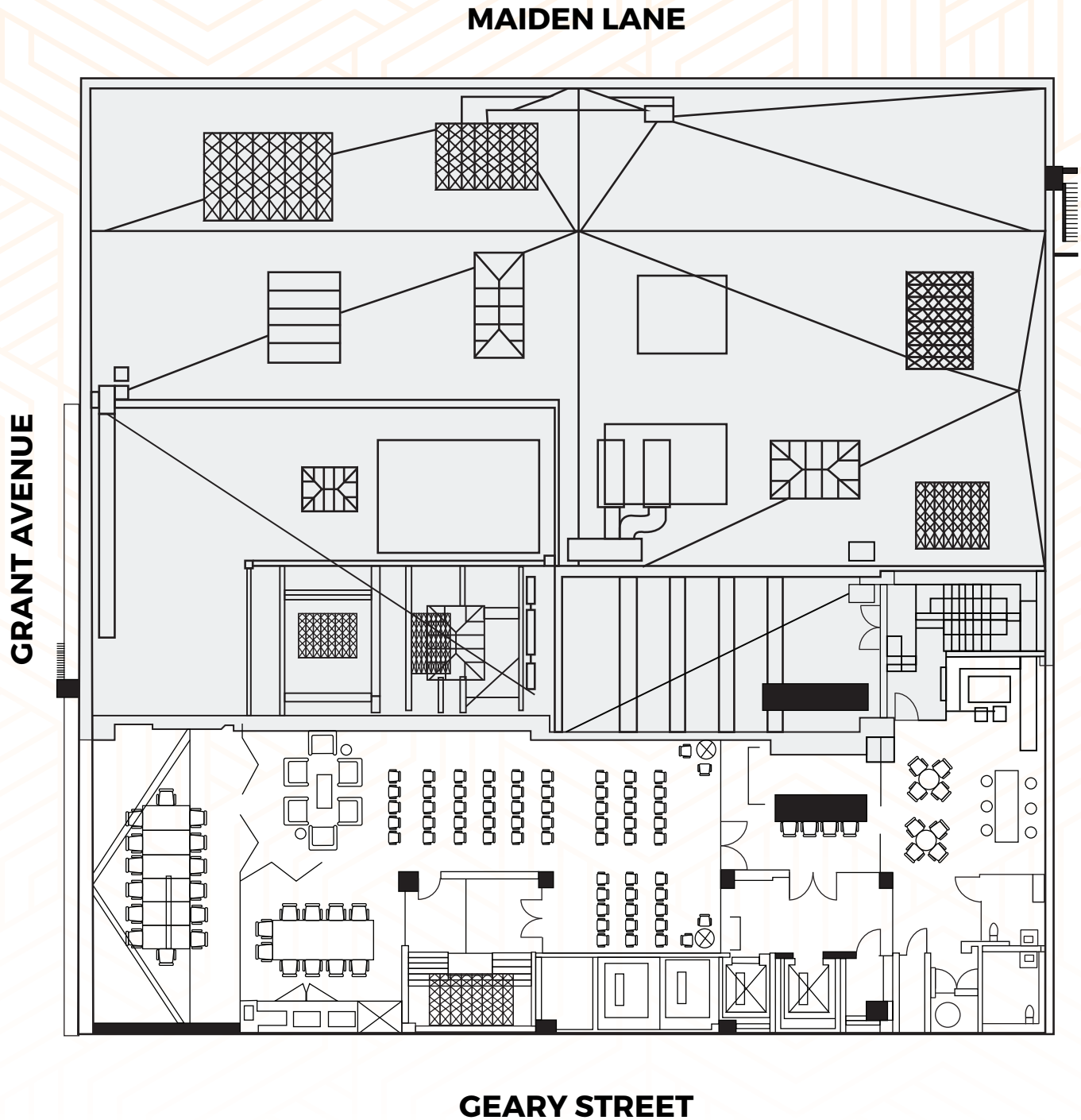


- 113 workstations
- 18-person boardroom
- 3 large conference rooms
- 13 meeting rooms and collaboration areas
- Formal secured reception
- Interconnecting staircase to 5th floor

FLOOR-7

4,639 SF

MUST BE LEASED WITH FLOORS 5 & 6 FOR 31,699 RSF



- Large kitchen and cafe
- Large lounge and game area
- All-hands area
- Top floor with skylights and abundant natural light