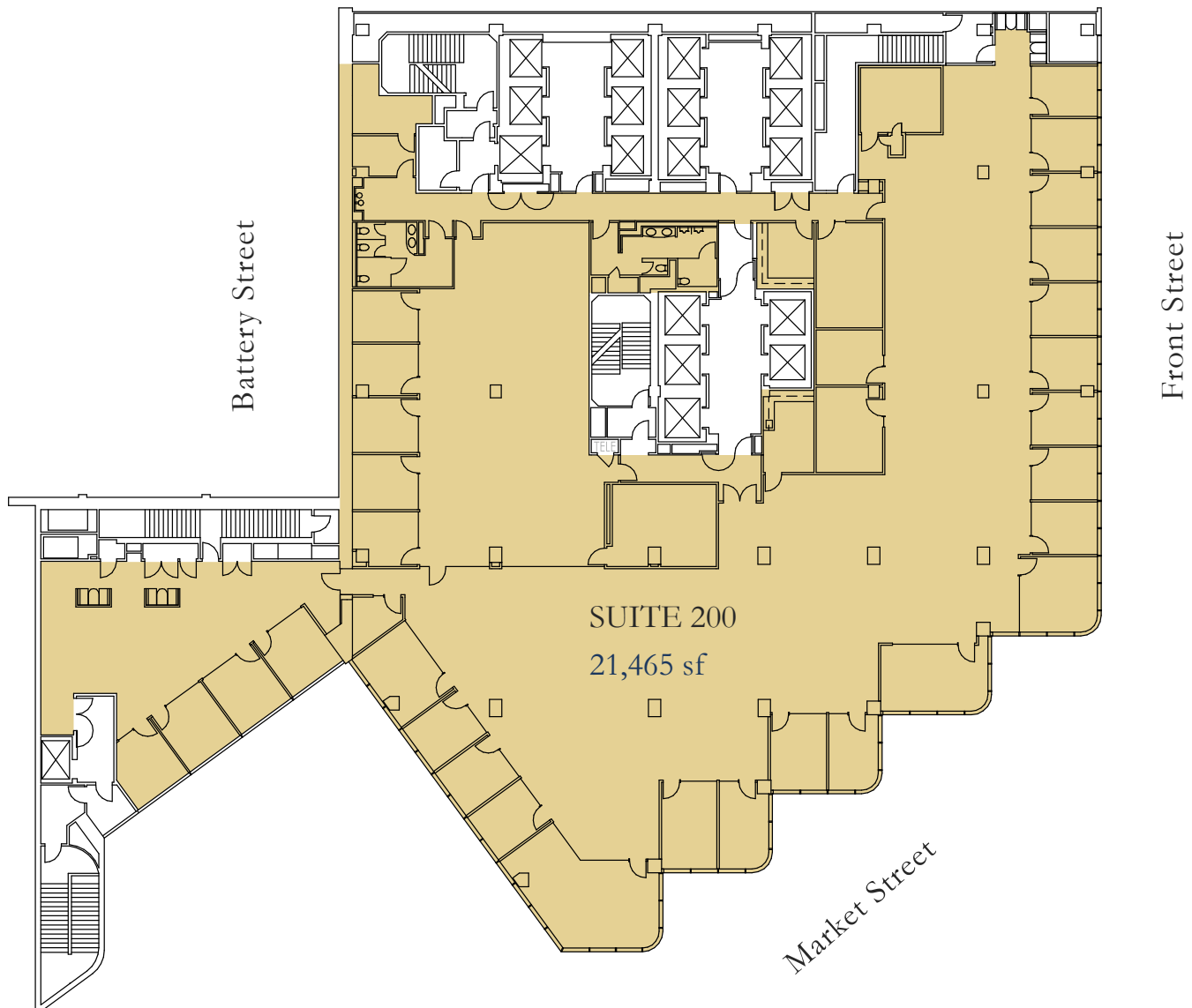


# SUITE 200

21,465 sf



## SUITE 200

- Available 10/1/25
- 26 private offices
- 3 conference rooms
- Kitchenette
- Storage/production area

# SUITE 300 & 350



## SUITE 300

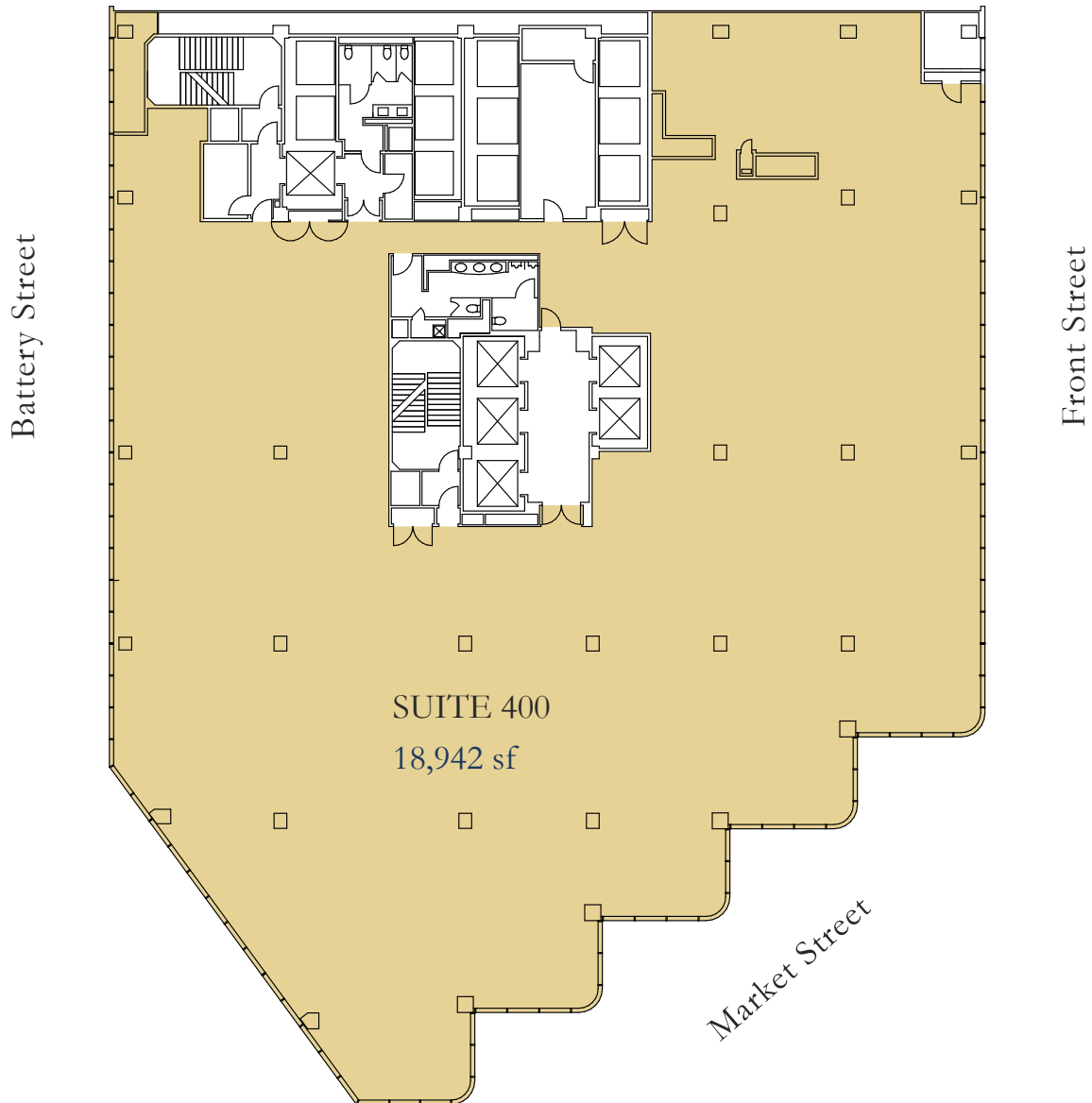
- Available now
- 11 private offices
- 3 conference rooms
- Kitchen/break room
- Private outdoor terrace

## SUITE 350

- Available now
- Can be delivered in shell condition
- Can be combined with Suite 300 for a total of 22,126 RSF

# SUITE 400

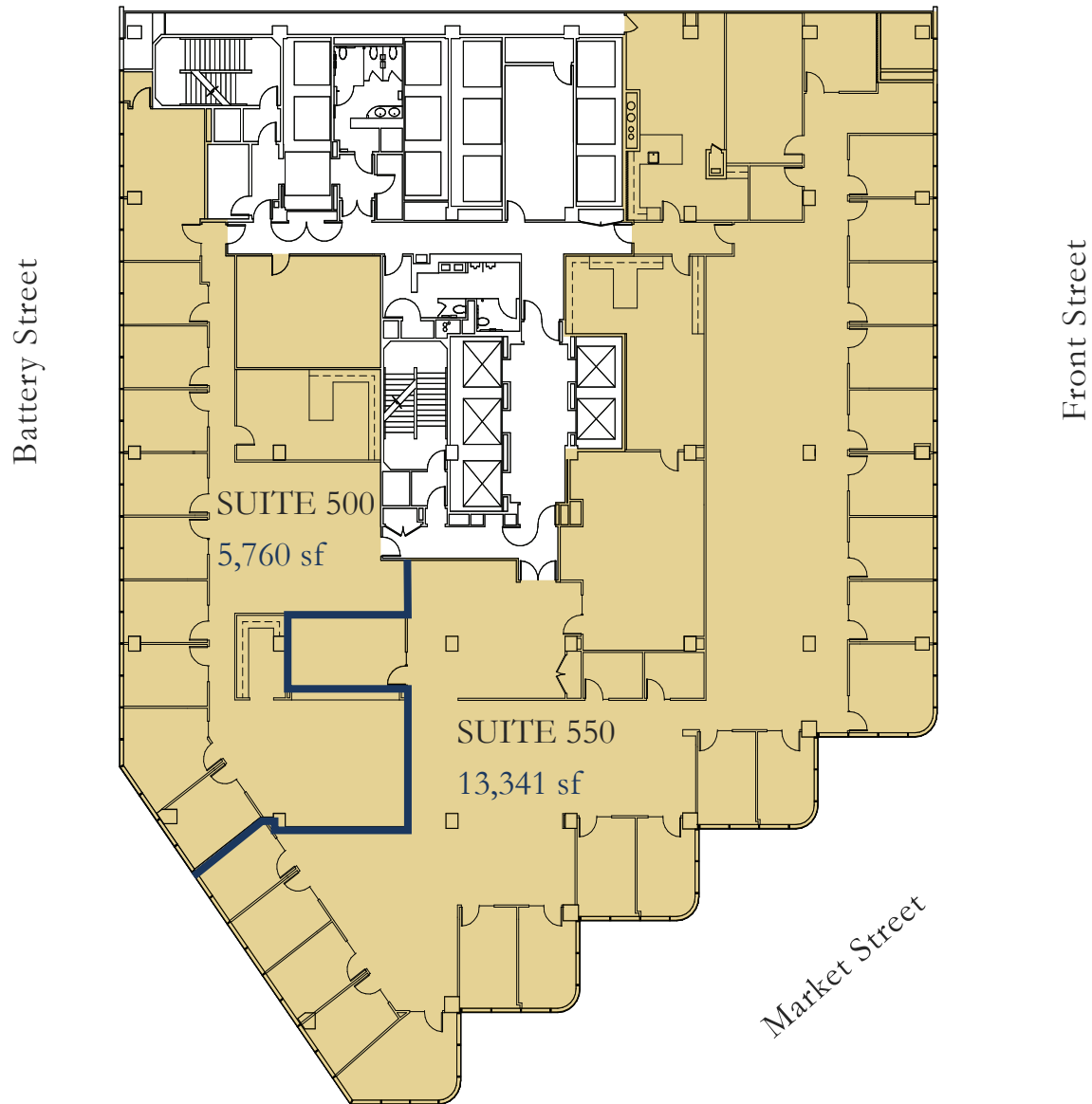
18,942 sf



## SUITE 400

- Available 10/1/25
- To be delivered in clean, “white-box” condition and ready for tenant improvements.

# SUITE 500 & 550



## SUITE 500

- Available now
- 1 large conference room
- 9 perimeter offices
- Kitchen

- Can be combined with Suite 550 for a total of 19,101 RSF

## SUITE 550

- Available now
- 18 perimeter offices
- 2 large conference rooms
- 2 phone rooms

- 3 medium conference rooms
- Kitchen
- Can be combined with Suite 500 for a total of 19,101 RSF

# SUITE 600

18,152 sf



## SUITE 600

- Available 10/11/25
- 4 conference rooms
- 19 private offices
- Kitchen/break area
- Production/storage area

# SUITE 700

19,055 sf

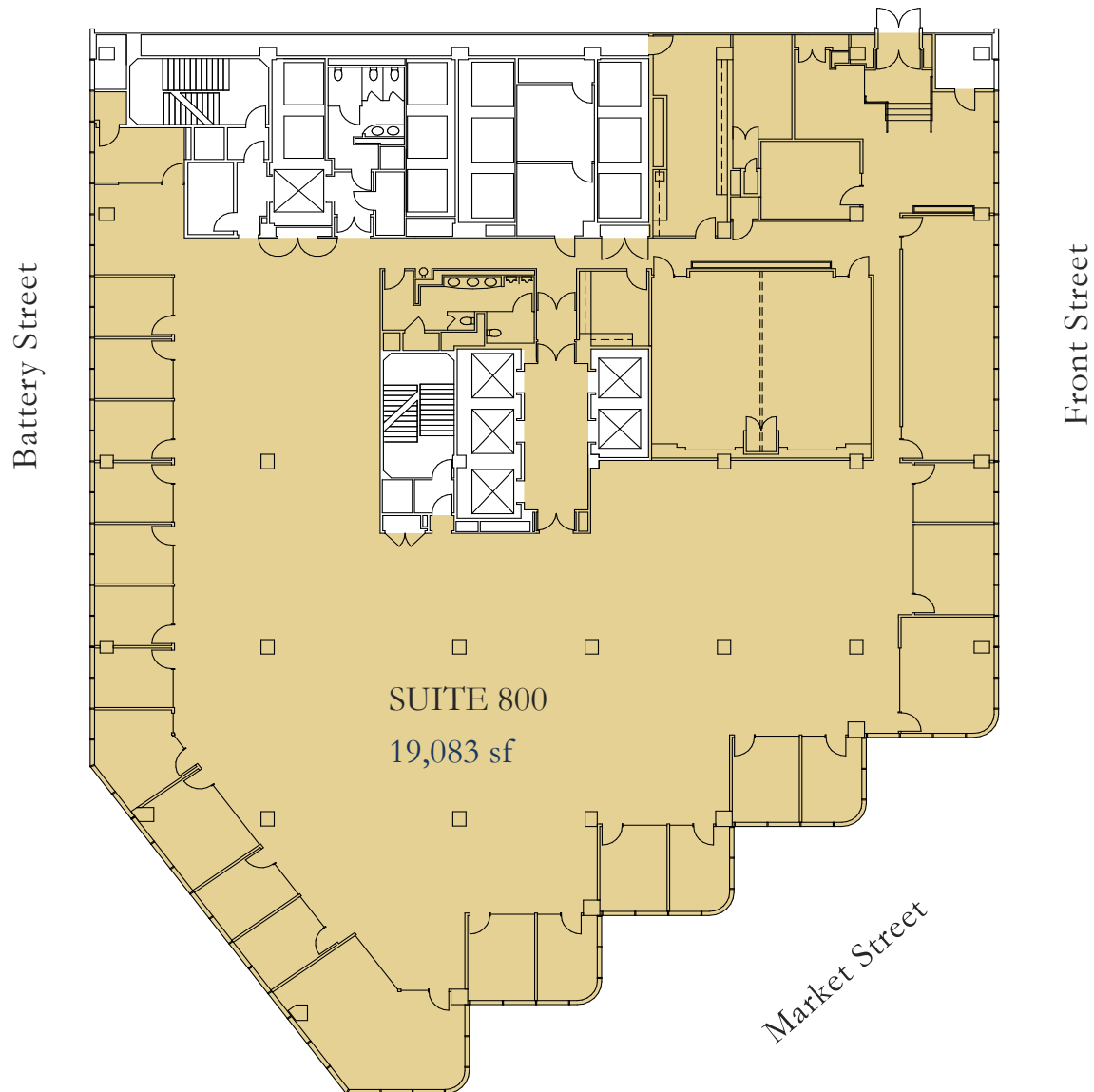


## SUITE 700

- Available 10/11/25
- 4 conference rooms
- 24 private offices
- 6 phone rooms
- Single stall gender-neutral restroom
- Production/storage area
- Kitchen
- Mother's room

# SUITE 800

19,083 sf



## SUITE 800

- Available 10/11/25
- 8 conference rooms
- 18 private offices
- 1 large boardroom
- Kitchen
- Storage/production room

# SUITE 900

18,231 sf



## SUITE 900

- Available 10/11/25
- 7 conference rooms
- 21 private offices
- 1 large boardroom
- 2 phone rooms
- Server room
- Kitchen
- Storage/production room



# SUITE 1100

19,073 sf



## SUITE 1100

- Available 10/1/25
- 6 conference rooms
- 23 private offices
- 1 large boardroom
- 5 phone rooms
- Interconnecting stairwell
- Additional single-stall gender-neutral restroom
- Reception
- Kitchen
- Storage/production area

# SUITE 1200

18,207 sf



## SUITE 1200

- Available 10/1/25
- 2 conference rooms
- 32 private offices
- 5 phone rooms
- Interconnecting stairwell down to suite 1100
- Additional single-stall gender-neutral restroom
- Kitchen
- Storage/production area

# SUITE 1400

18,514 sf



## SUITE 1400

- Available 10/1/25
- 26 window-lined private offices
- 12 internal private offices
- 2 phone rooms
- 2 small meeting rooms
- 4 conference rooms
- Additional single-stall gender-neutral restroom
- Kitchen
- Storage/production area

# SUITE 1600

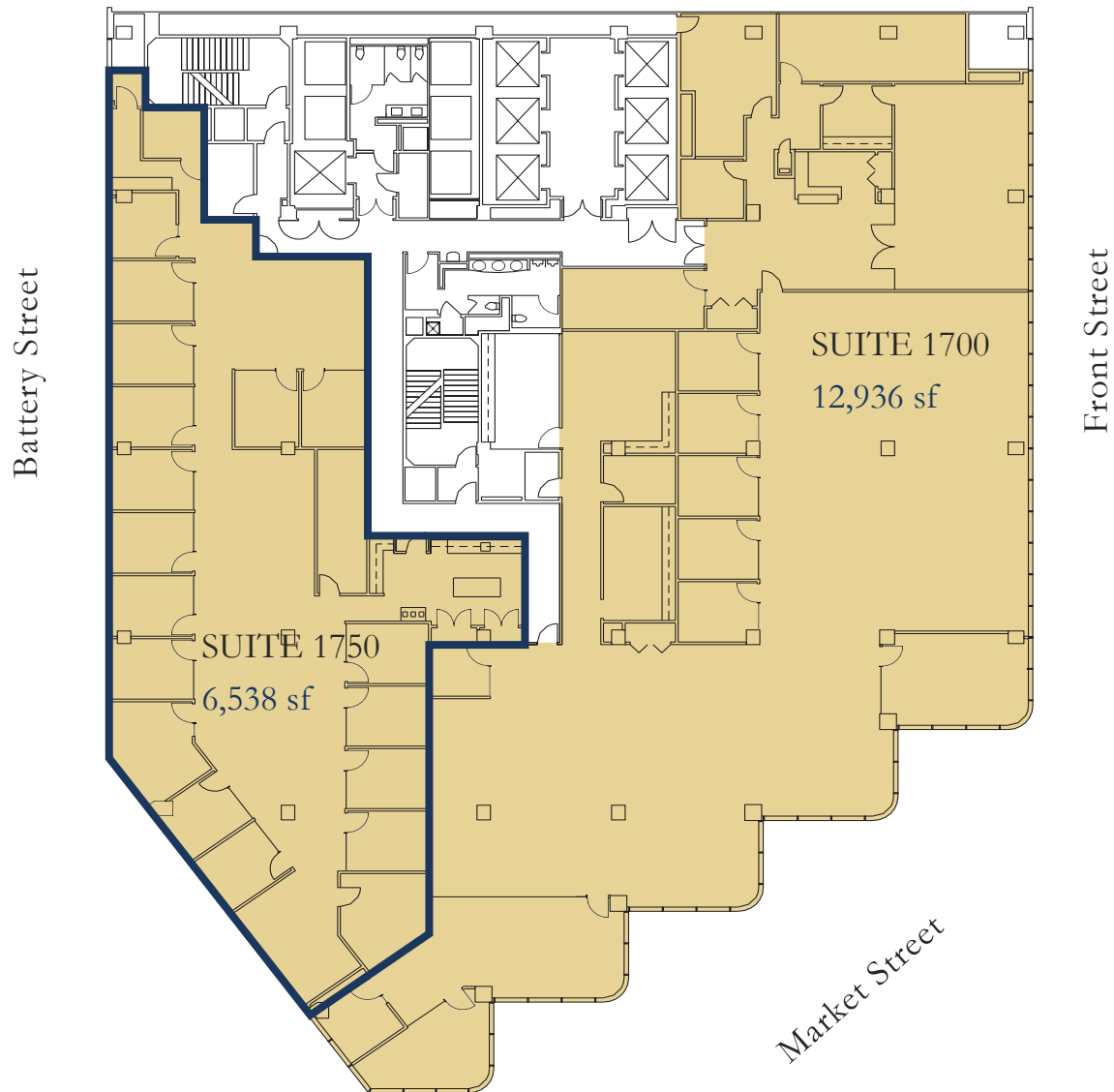
19,431 sf



## SUITE 1600

- Available 10/1/25
- 14 private offices
- 6 conference rooms
- 6 phone rooms
- Additional single-stall gender-neutral restroom
- Kitchenette
- Server room
- Storage/production room

# SUITE 1700 & 1750



## SUITE 1700

- Available 10/1/25
- 3 conference rooms
- 5 private offices
- Kitchen

- Production / storage area
- Open space

## SUITE 1750

- Available 10/1/25
- 11 window-lined private offices
- 7 interior private offices
- 2 server rooms

- Kitchen
- 1 phone room

18,607 sf

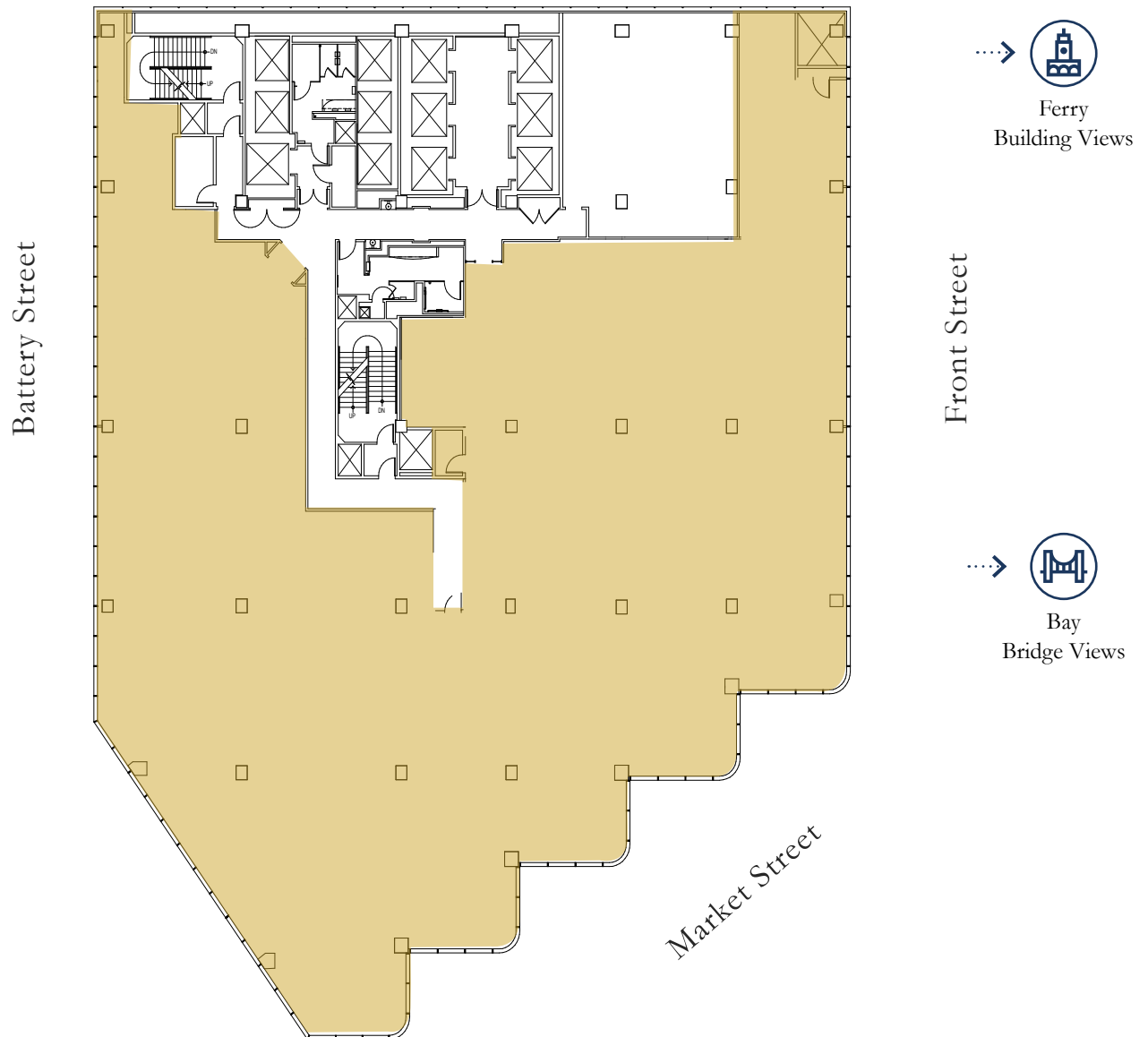


- Available 10/1/25
- Pre-built traditional office
- 29 window-line offices
- 3 interior offices
- 2 meeting rooms
- Kitchen
- Production room
- Storage
- Ample open area for workstations

# SUITE 1900

17,999 sf

[Click Here for Virtual Tour](#)

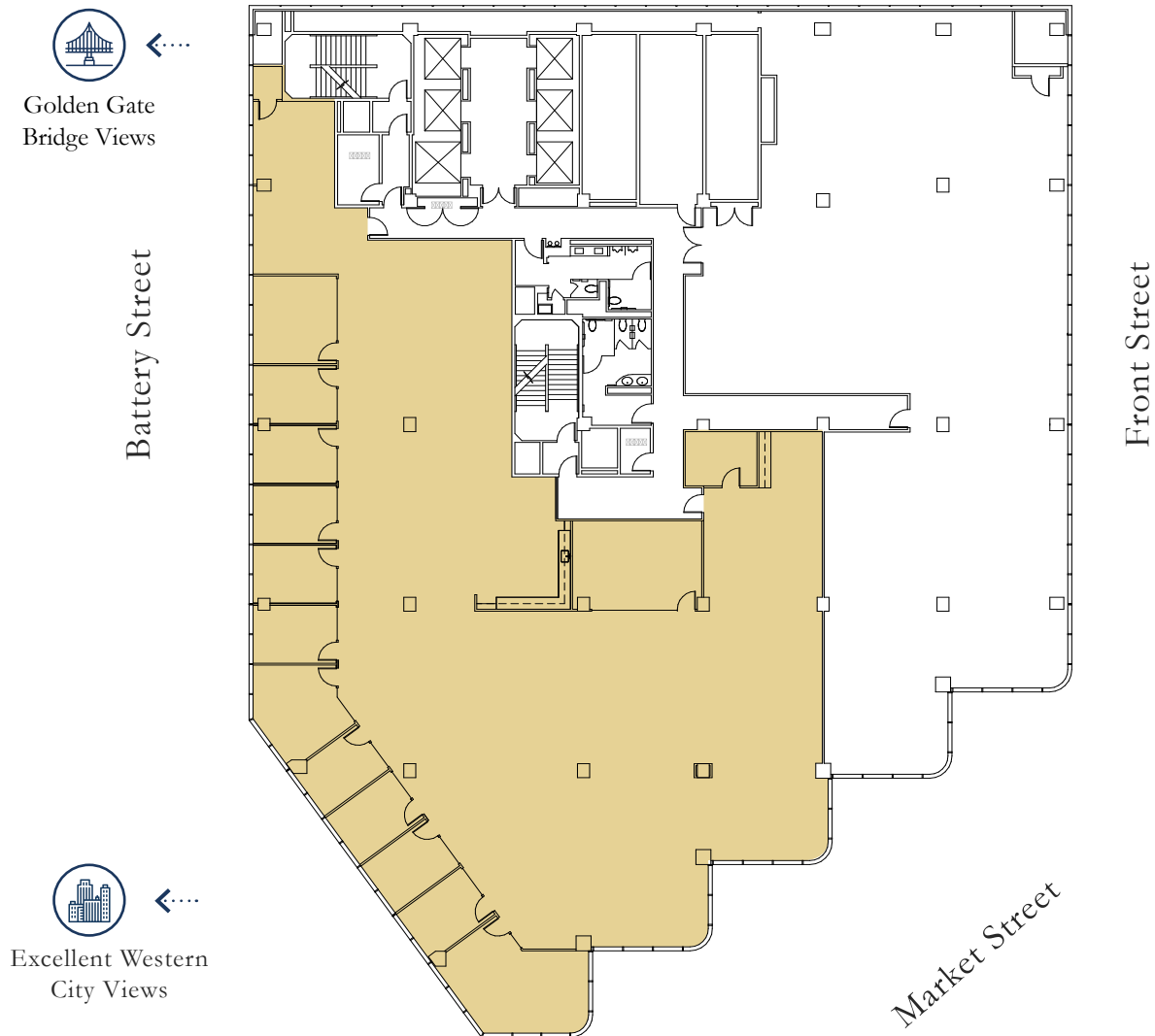


## SUITE 1900

- Available now
- Full floor in “clean white-box” condition
- Outstanding views of the Ferry Building, Bay Bridge, and down Market Street
- Suite can be demised from 8,000 to 10,000 RSF
- Brand new upgrades to the common areas and restrooms

# SUITE 2600

11,518 sf



## SUITE 2600

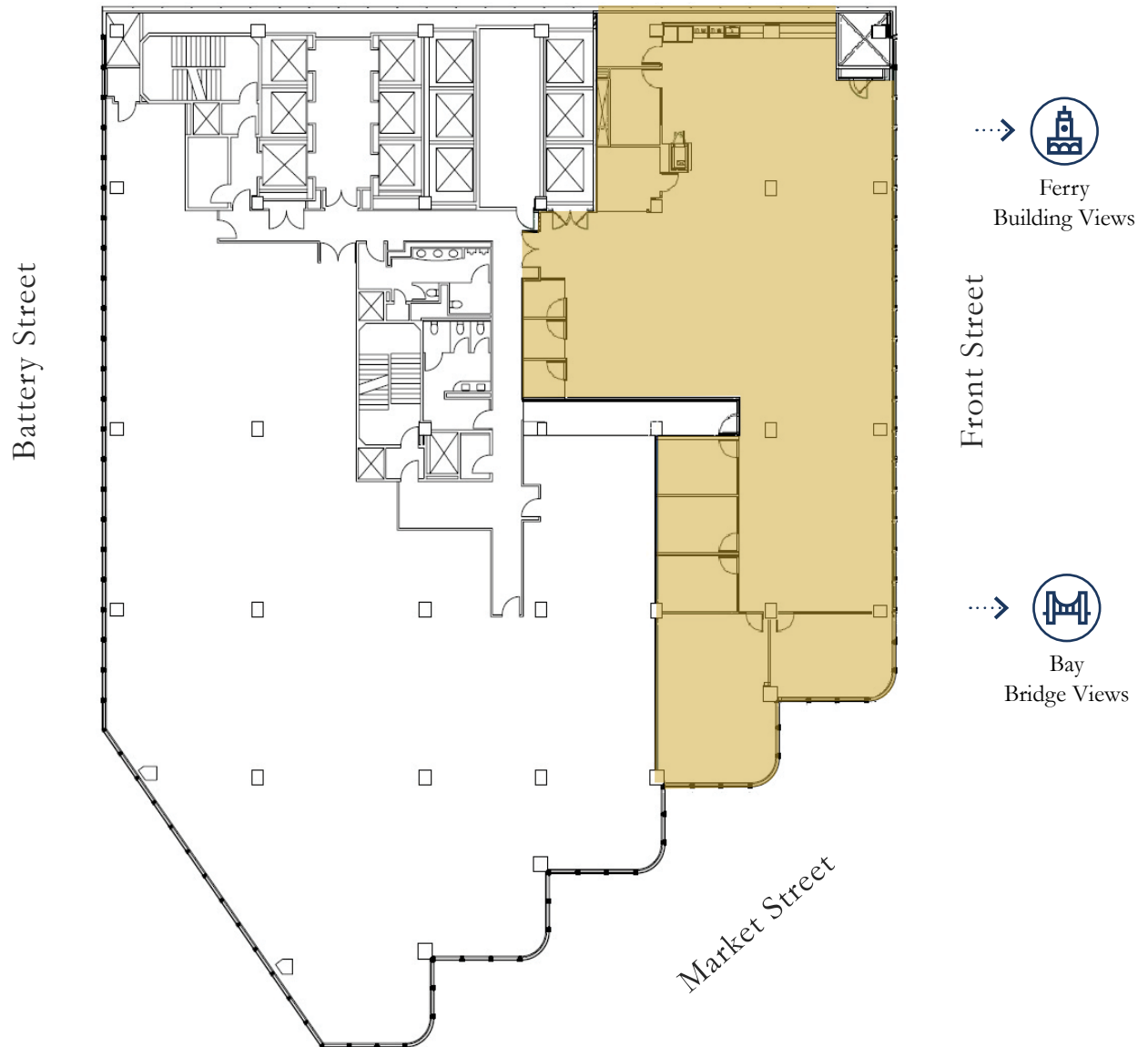
- Available now
- 10 perimeter offices
- 2 large conference rooms
- 2 medium conference rooms
- Open kitchen
- Can be combined with 27th – 36th floors for a total of 195,222 RSF



# SUITE 2650

7,521 sf

[Click Here for Virtual Tour](#)



## SUITE 2650

- Available now
- 5 private offices
- High-end creative space with exposed ceilings and polished concrete
- 2 large board rooms
- 3 phone rooms
- Large open kitchen
- One storage room
- Excellent bay views
- Can be combined with Suite 600 for a total of 19,039 RSF

# SUITE 2900

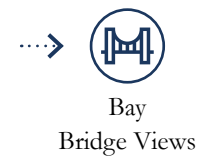
19,938 sf



Battery Street



Front Street



Market Street

## SUITE 2900

- Available now
- 1 large boardroom
- 10 medium conference rooms
- Open ceiling creative space
- 5 phone rooms
- Kitchen
- Can be combined with 26th –36th floors for a total of 195,222 RSF

# SUITE 3150

10,129 sf



## SUITE 3150

- Available 1/1/26
- 15 private offices
- 1 boardroom
- 1 large conference room
- 2 medium conference rooms
- 1 phone booth
- Kitchen and break room
- Copy room
- IT and storage rooms

# SUITE 3400

16,619 sf

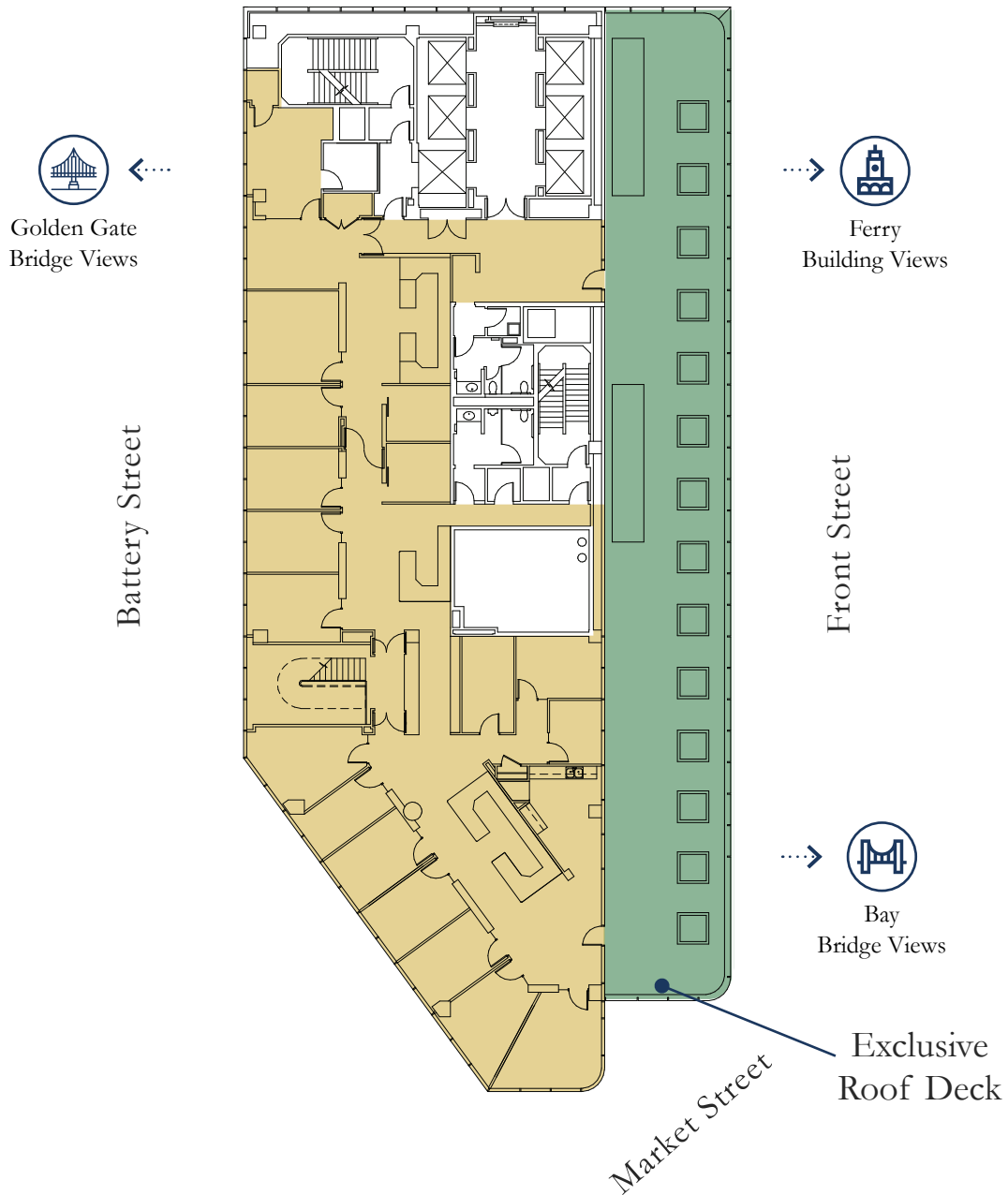


## SUITE 3400

- Available now
- Panoramic views of the Golden Gate Bridge, Ferry Building, and Bay Bridge
- 19 perimeter private offices
- 1 large conference room
- 5 medium conference rooms
- Exclusive roof terrace
- Interconnecting stairwell between the 32nd – 36th floors
- Can be combined with 26th – 36th floors for a total of 195,222 RSF

# SUITE 3600

10,311 sf



## SUITE 3600

- Available now
- 12 perimeter offices
- 1 large conference room
- 4 medium sized conference rooms
- Panoramic views of the Golden Gate Bridge, Ferry Building, and Bay Bridge
- Interconnecting stairwell between 32nd – 36th floors
- Exclusive roof terrace
- Can be combined with 26th – 36th floors for a total of 195,222 RSF