



PRISM

999 17TH STREET | DENVER, CO

Q

THE QUINCY

LUXURY

APARTMENTS

NOW

LEASING

303.594.9498

denverquincy.com

THE CROWN JEWEL

of Denver's central business district.

PRISM is a new construction 100,000 square foot, 9-story trophy Class-A building situated in the heart of the central business district. A perfect blend of innovative design and convenient amenities, PRISM strives to cultivate creativity, attract talent, and honor Denver's entrepreneurial and energetic spirit.





AMENITIES



CONFERENCE FACILITY



ONSITE FITNESS CENTER



SHOWER FACILITY



SECURE BIKE STORAGE



ON-SITE CONCIERGE

BUILDING SIZE 101,106 SF BUILDING
94,583 SF OF OFFICE
6,523 SF OF RETAIL

FLOORS 9 STORIES

AVERAGE FLOORPLATE 12,200 SF

PARKING UP TO 2.0/1,000 SF
DIRECT, SECURE ACCESS



MAKE YOUR STATEMENT

With nine stories of folded planes of curtain wall, PRISM is a literal reflection of Denver's dynamic and ever-changing central business district.



RUSH HOUR TO HAPPY HOUR

and everything in between.



INCREDIBLE WALK SCORE®

96

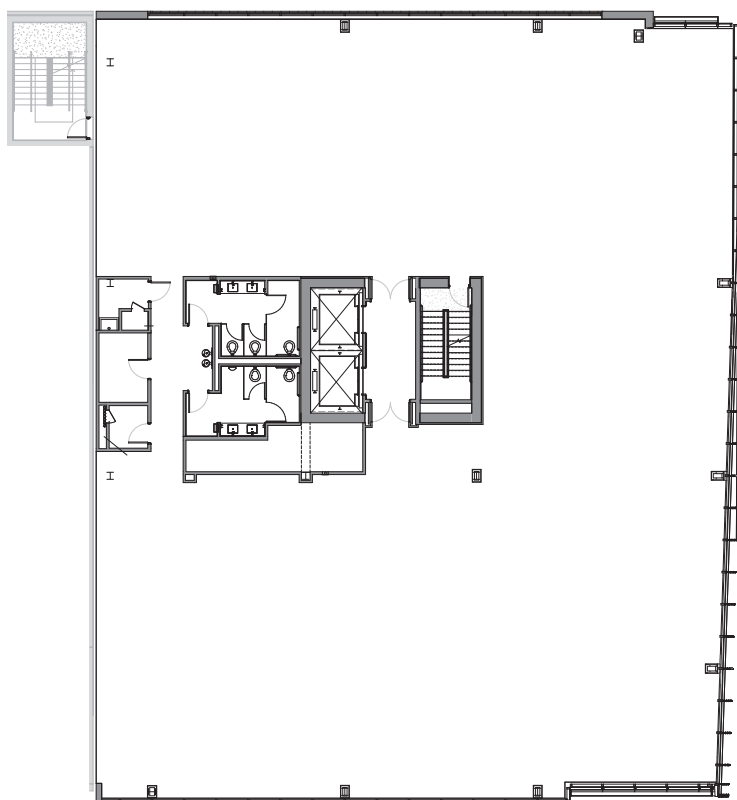
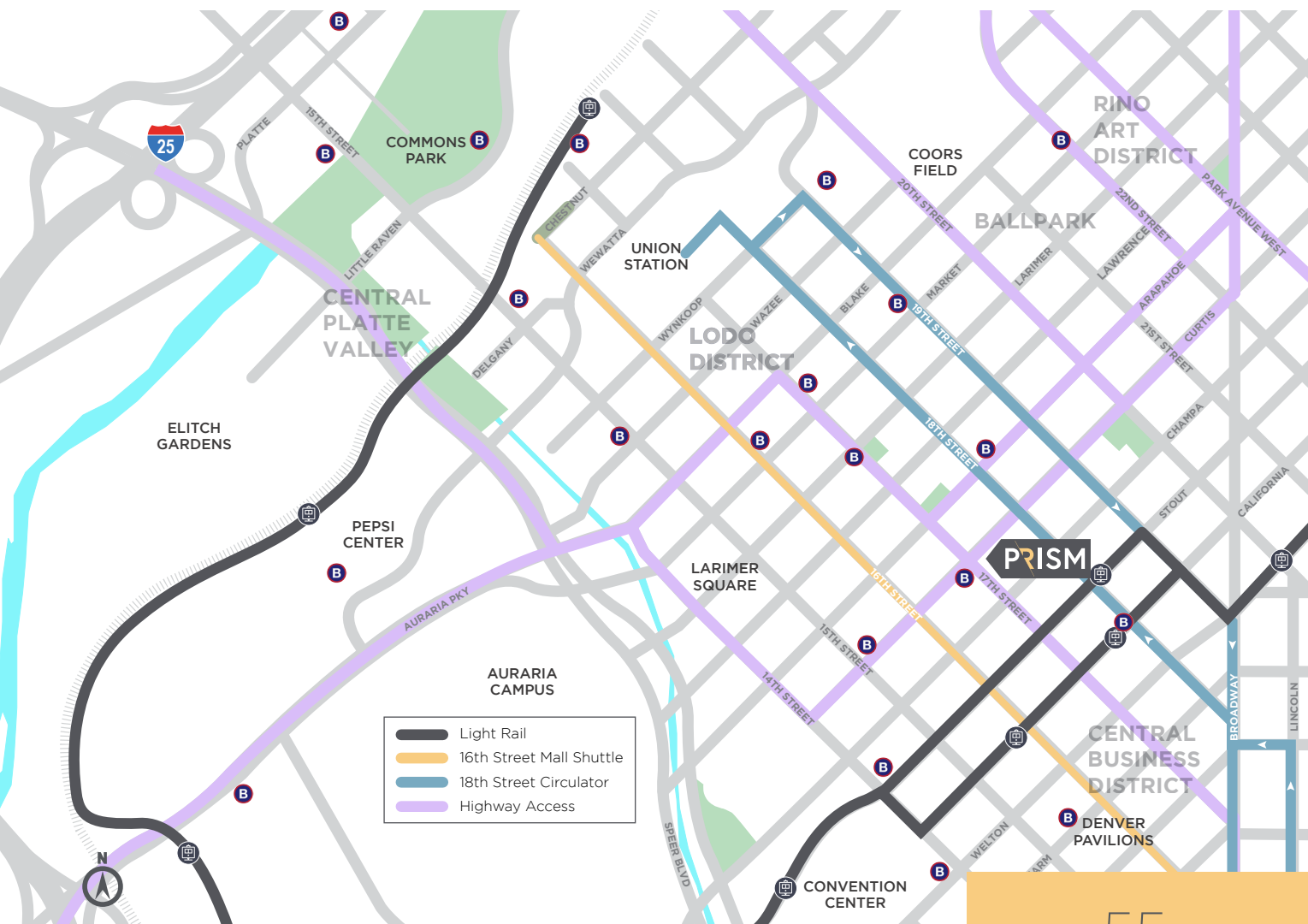
WALKER'S
PARADISE

98

WALKER'S
PARADISE

93

WALKER'S
PARADISE



55
RESTAURANTS
within a <3 minute walk

11
HOTELS
within a <3 minute walk

TYPICAL FLOORPLATE

- 12,200 RSF
- 14' exterior glassline
- Ultra-efficient 8.3% load factor
- 9'6" finished ceiling height

PRISM

FOR FURTHER INFORMATION PLEASE CONTACT:

KEVIN FOLEY +1 303 542 1550 | KEVIN.P.FOLEY@JLL.COM

JOHN BEASON +1 303 217 7949 | JOHN.BEASON@JLL.COM

Shea Properties



OAKTREE

www.sheaprism.com

Jones Lang LaSalle Brokerage, Inc.

©2025 Jones Lang LaSalle IP, Inc. All rights reserved. All information contained herein is from sources deemed reliable; however, no representation or warranty is made to the accuracy thereof.