

# Fort Wright Executive Center

Building I (1885 Dixie Hwy)  
Building II (1881 Dixie Hwy)

Fort Wright, KY 41011

Unmatched exposure  
on I-71/I-75



Contacts:

**Michelle Klingenberg**  
**Senior Vice President**  
+1 513 719 3703  
michelle.klingenberg@jll.com

**Britney Aviles**  
**Analyst**  
+1 513 297 2510  
britney.aviles@jll.com





# OVERVIEW OF BUILDINGS

1885 Dixie Hwy



1881 Dixie Hwy



Under new ownership – building updates in progress

## Fort Wright Executive Center features:



- 1885 Dixie Hwy – 25,000 SF, 3 stories
- 1881 Dixie Hwy – 25,000 SF, 3 stories



- Building signage available with direct visibility to I-71/I-75



- On-site conference room



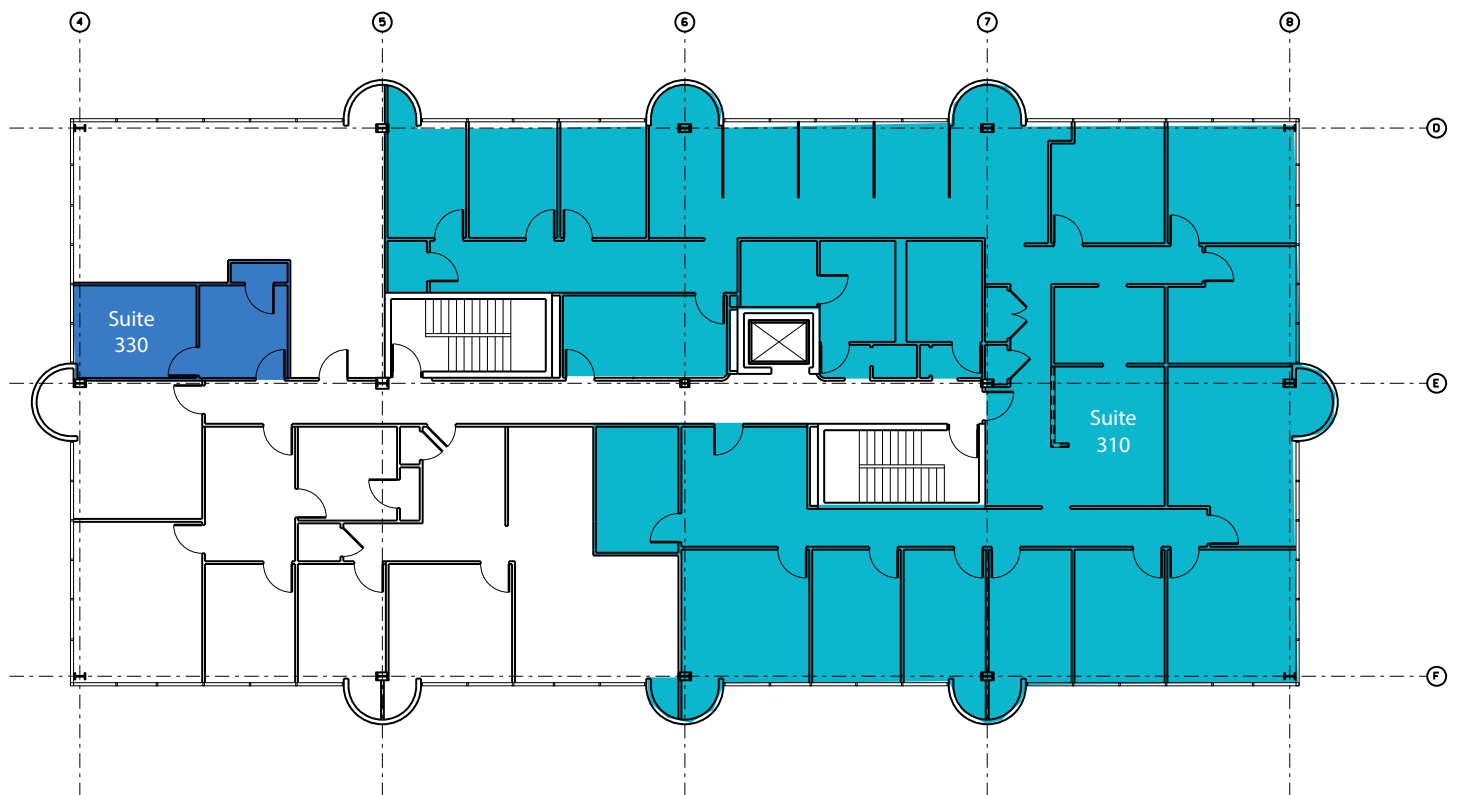
- Located just 10 min from Greater Cincinnati International Airport and 5 min from downtown Cincinnati

# FLOOR PLANS

## Building I

Suite 310: 4,623 s.f.

Suite 330: 287 s.f.

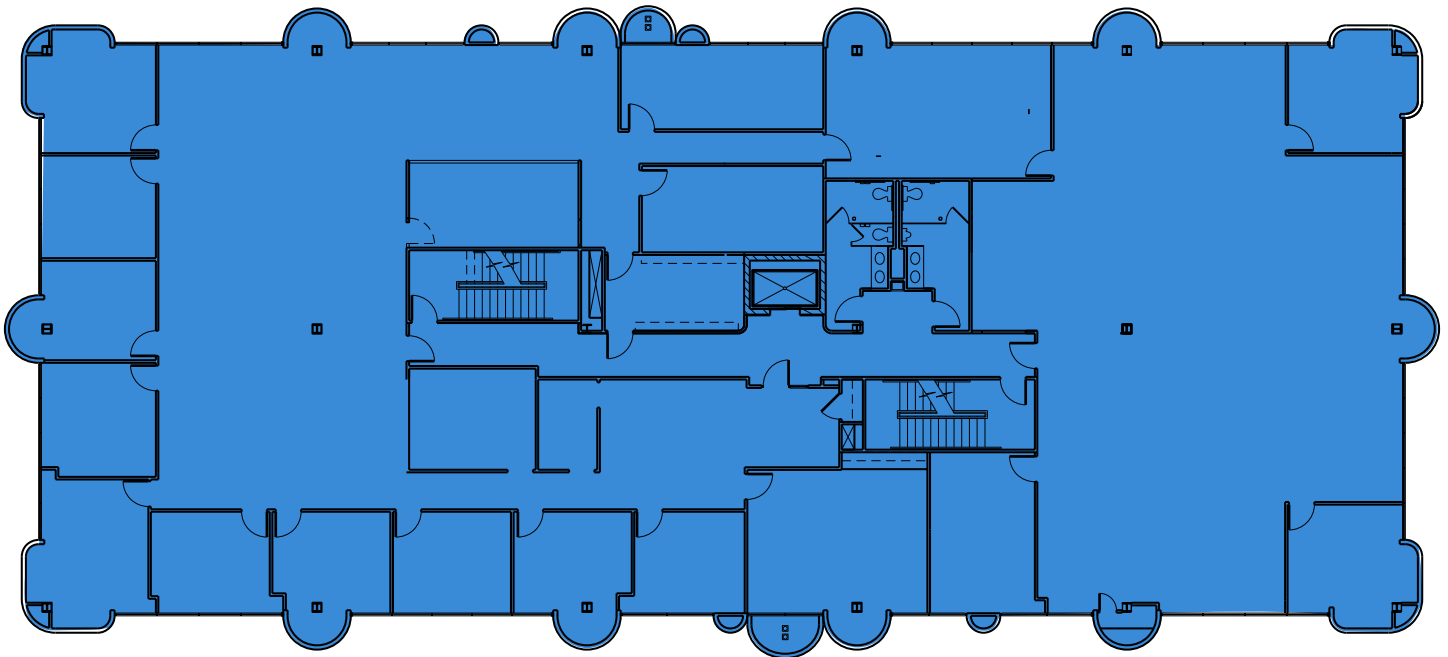




# FLOOR PLANS

## Building II

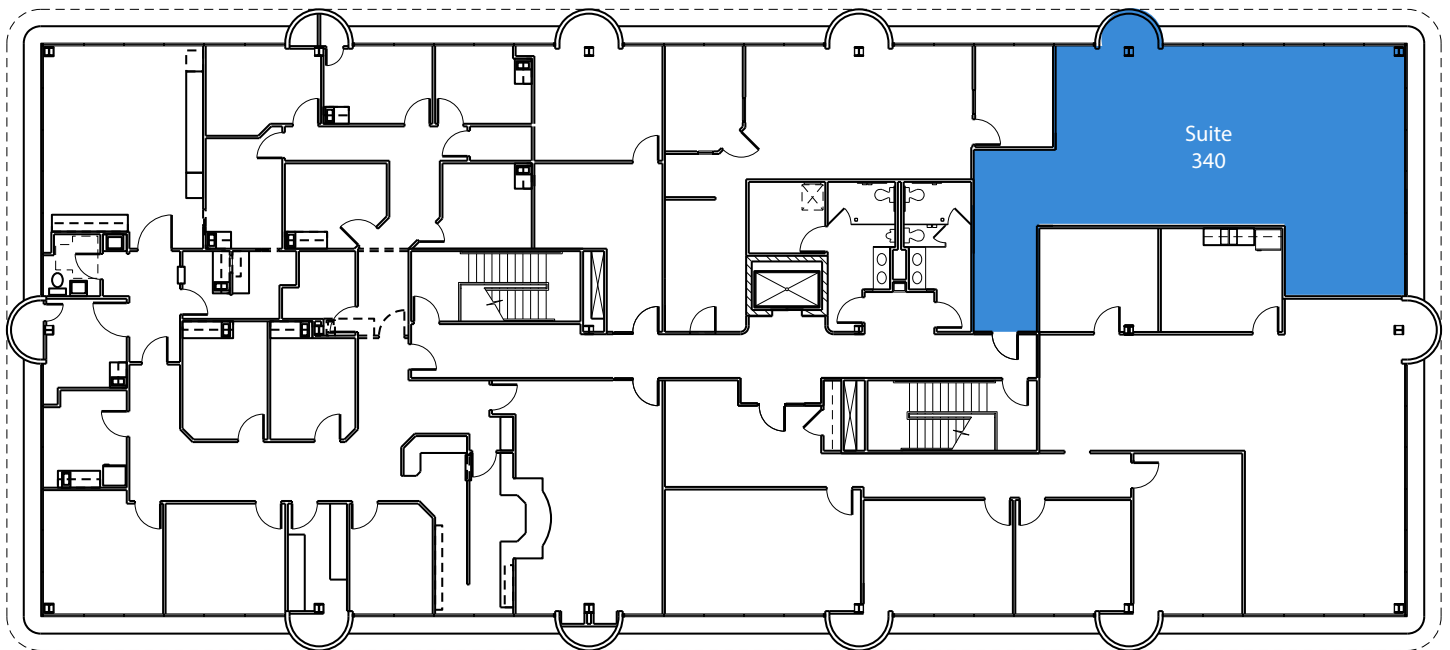
Suite 220: 11,293 s.f.



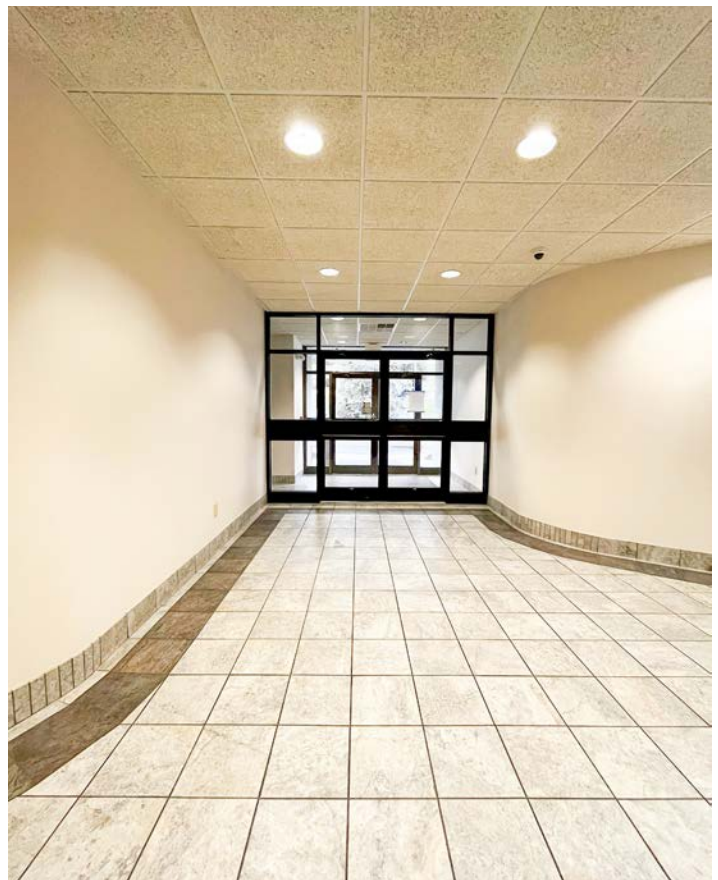
# FLOOR PLANS

## Building II

Suite 340: 1,395 s.f.

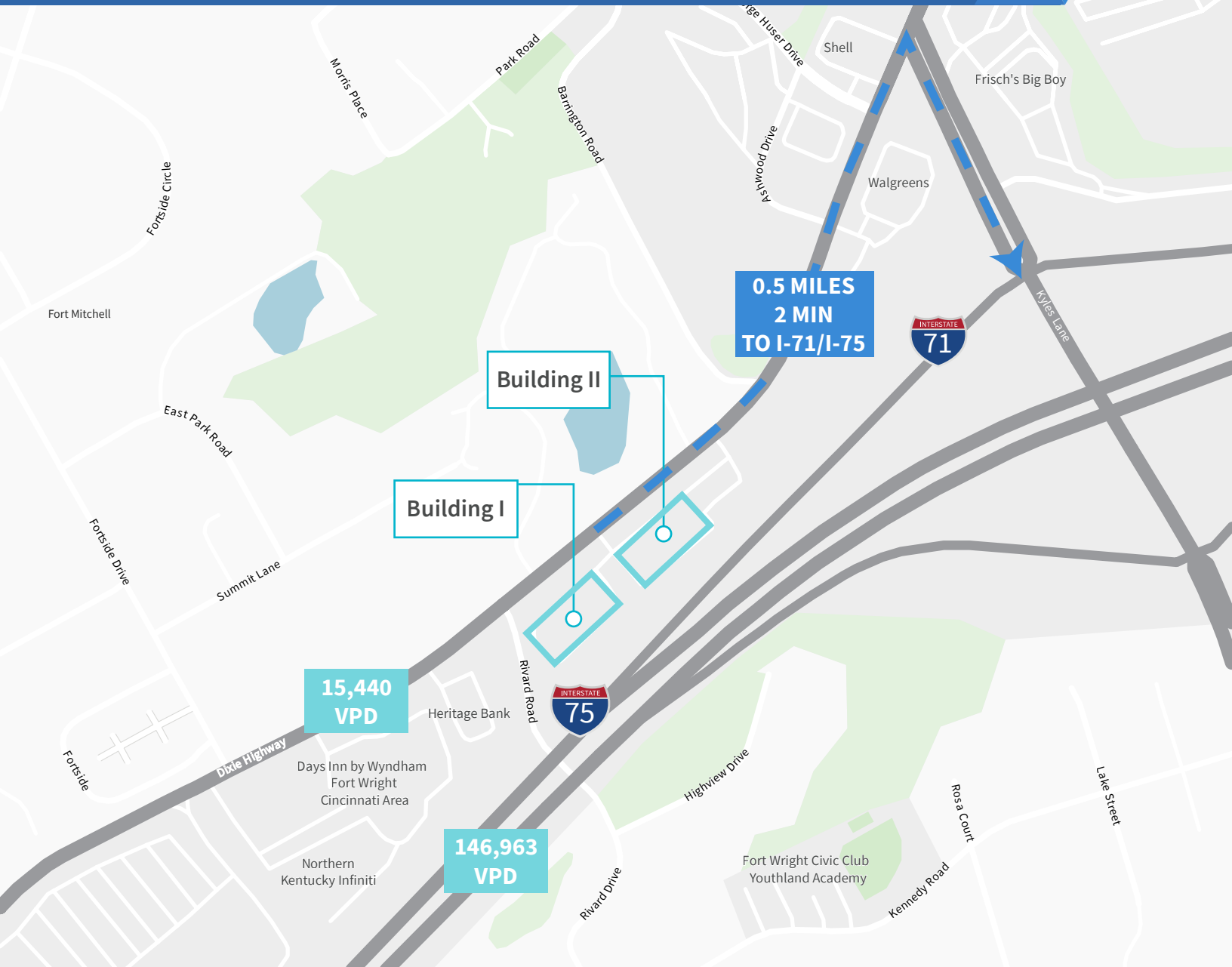


# COMMON AREA UPGRADES





# LOCATION OVERVIEW



## Contacts:

**Michelle Klingenberg**  
Senior Vice President  
+1 513 719 3703  
[michelle.klingenberg@jll.com](mailto:michelle.klingenberg@jll.com)

**Britney Aviles**  
Analyst  
+1 513 297 2510  
[britney.aviles@jll.com](mailto:britney.aviles@jll.com)



## About JLL

JLL (NYSE: JLL) is a leading professional services firm that specializes in real estate and investment management. JLL shapes the future of real estate for a better world by using the most advanced technology to create rewarding opportunities, amazing spaces and sustainable real estate solutions for our clients, our people and our communities. JLL is a Fortune 500 company with annual revenue of \$19.4 billion, operations in over 80 countries and a global workforce of more than 98,000 as of December 31, 2021. JLL is the brand name, and a registered trademark, of Jones Lang LaSalle Incorporated. For further information, visit [jll.com](http://jll.com).