

350
West Broadway



commercial real estate

SOHO | NEW YORK
RETAIL SPACE FOR LEASE

Corey J. Zolcinski
+1 212 812 5707
corey.zolcinski@jll.com





350
West Broadway

350 West Broadway, situated at the base of a luxury high-end condominium building is a unique SoHo flagship opportunity in one of New York's hottest and in-demand neighborhoods.

With impressive all-glass frontage on West Broadway and 7-days a week foot traffic, the location boasts excellent visibility and exposure to both, area residents, and visitors.

LOCATION:

West Broadway, between Broome & Grand Streets

AVAILABLE SPACE:

Ground Floor*

3,042 SF

*Divisible

Second Floor

4,913 SF

Outdoor Terrace

1,425 SF

CEILING HEIGHT:

Ground Floor

14'3"

Second Floor

12'11"

FRONTAGE:

Approx 80'

POSSESSION:

Immediate

NEIGHBORING TENANTS:

Cipriani

Gucci

Ralph Lauren

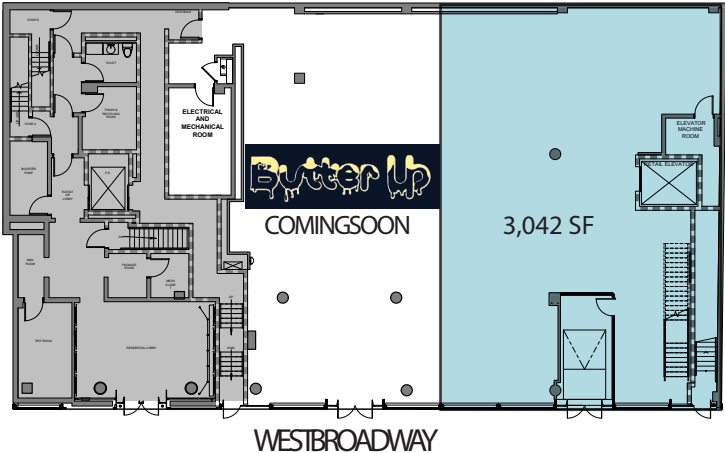
Thom Sweeney

Oliver Peoples

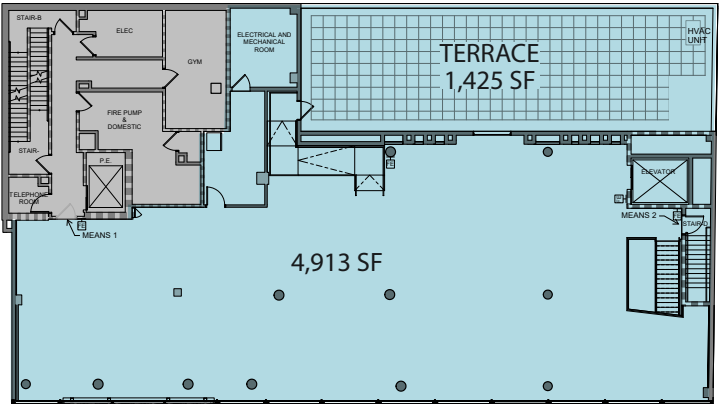
SoHo Grand Hotel

Single Tenant Option

GROUND FLOOR



SECOND FLOOR

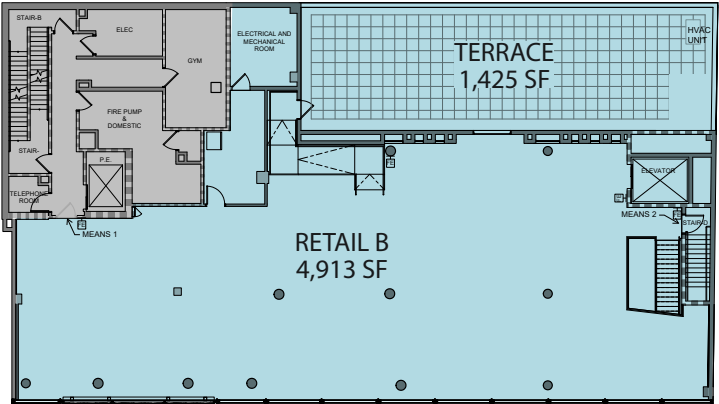


Multi-Tenant Option

GROUND FLOOR



SECOND FLOOR



A dynamic neighborhood,

surrounded by a vibrant mix of global fashion brands, boutiques, home decor, galleries, stylish hotels and the finest restaurants & nightlife.

