

# former bank corner available for lease



## 535 Seventh Avenue midtown west retail

**Southwest corner of Broadway & W. 39th Street** - Centrally located between NYC's busiest hubs: **Times Square, Bryant Park, Herald Square, Penn Station & Port Authority**

### Size

Ground Floor: 6,710 SF

### Frontage

Approx. 100' wraparound

### Ceiling Height

Ground Floor: 14'

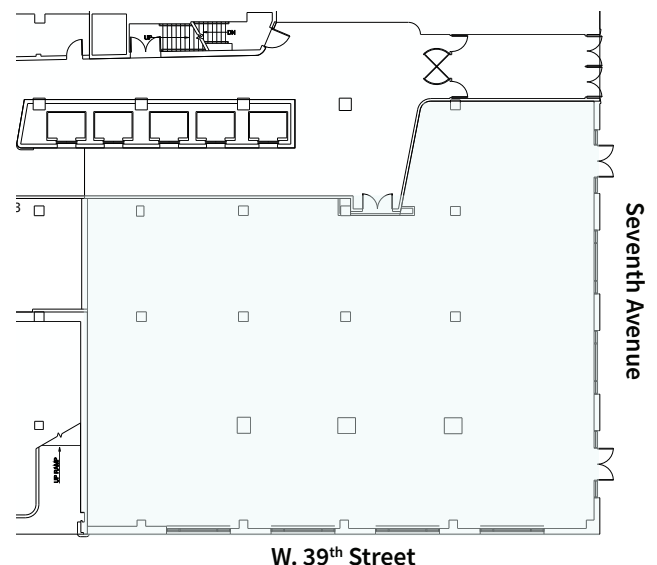
### Status

Currently Wells Fargo Bank

### Possession

August 2025

- Retail at the base of a 1.1M sf office tower
- Highly-trafficked pedestrian corridor
- Area office tenants include: WeWork, Macy's, Bank of America, HBO, Ann Inc., Bank of China, Salesforce, PVH, Knotel, Ralph Lauren, Signature Bank, Kohl's Corp., Ernst & Young, Victoria's Secret, Verizon, GrubHub, Comcast



**Corey J. Zolcinski**

212.812.5707 | corey.zolcinski@jll.com



# 535 Seventh Avenue

