



# For Lease 1400 Chatham Ave. | Norwalk, Iowa 50211

**Up to 10,265 RSF Commercial Space Available in Hughes Century Crossing**

## Property details

<b>Availability:</b>	1,625 – 10,265 RSF (can be subdivided)
<b>Lease rate:</b>	\$27.50 - \$29.50
<b>Total building size:</b>	13,290 RSF
<b>Location:</b>	Quick access to I-35 via Hwy 5 extension with easy access to Downtown Des Moines, located in a fast-growing retail corridor within Hughes Century Crossing
<b>Property information:</b>	<ul style="list-style-type: none"><li>• Multi-tenant building suitable for retail, restaurants, medical and office tenants</li><li>• Located adjacent to multiple single-family and multi-family housing developments, &amp; retail, commercial, and hospitality</li></ul>

### About Hughes Century Crossing

Hughes Century Crossing at Norwalk Central is a thriving mixed-use development featuring an expansive 20+ acre sports campus with turf fields and indoor recreation center that draws local, regional, and national events, and is complimented by restaurants, retail, and hotels. Additionally, this ongoing project encompasses Gregg young Sports Campus, City State Bank Norwalk Fieldhouse for public recreation, a future amphitheater, and a 10-foot bike trail connecting Highway 28 to East 18<sup>th</sup> Street. Being located along Highway 28, Hughes Century Crossing provides excellent access to major travel corridors and Metro communities.

---

### Aaron Hyde

Senior Vice President  
JLL Des Moines  
+1 515 953 8834  
[aaron.hyde@jll.com](mailto:aaron.hyde@jll.com)

### Nick Anderson

Associate  
JLL Des Moines  
+1 515 729 6015  
[nicholas.anderson@jll.com](mailto:nicholas.anderson@jll.com)

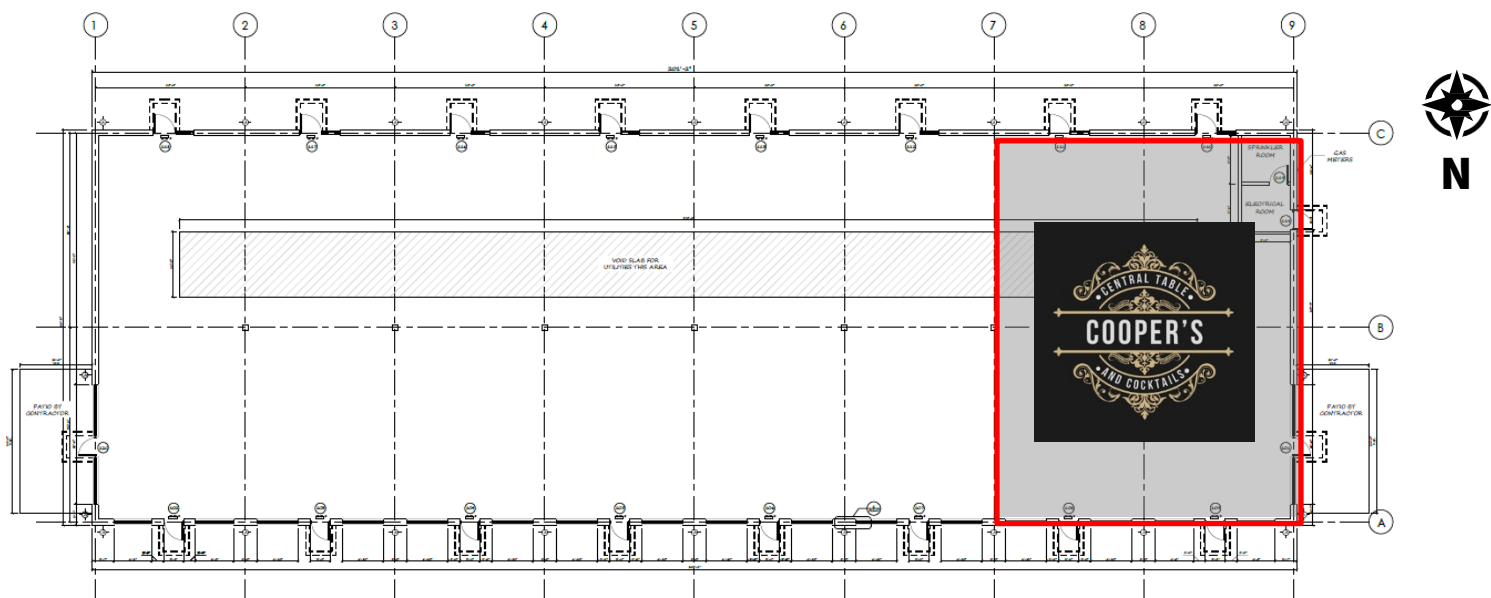
---

[jll.com/des-moines](http://jll.com/des-moines)





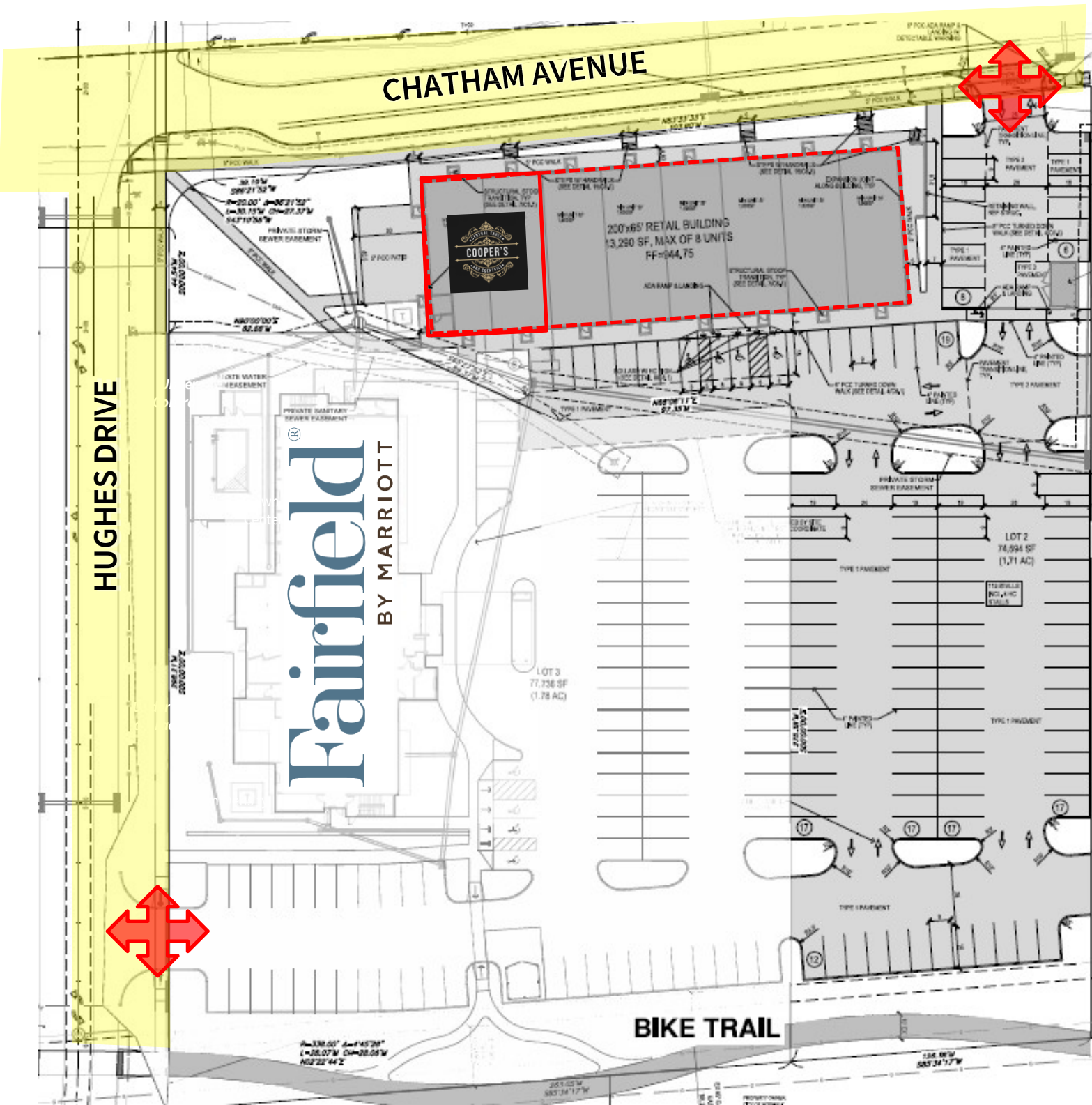
Floor plan



Hughes Century Crossing at Norwalk Central



Site plan



\*Conceptual building site plan, rendering subject to change.



# Hughes Century Crossing at Norwalk Central

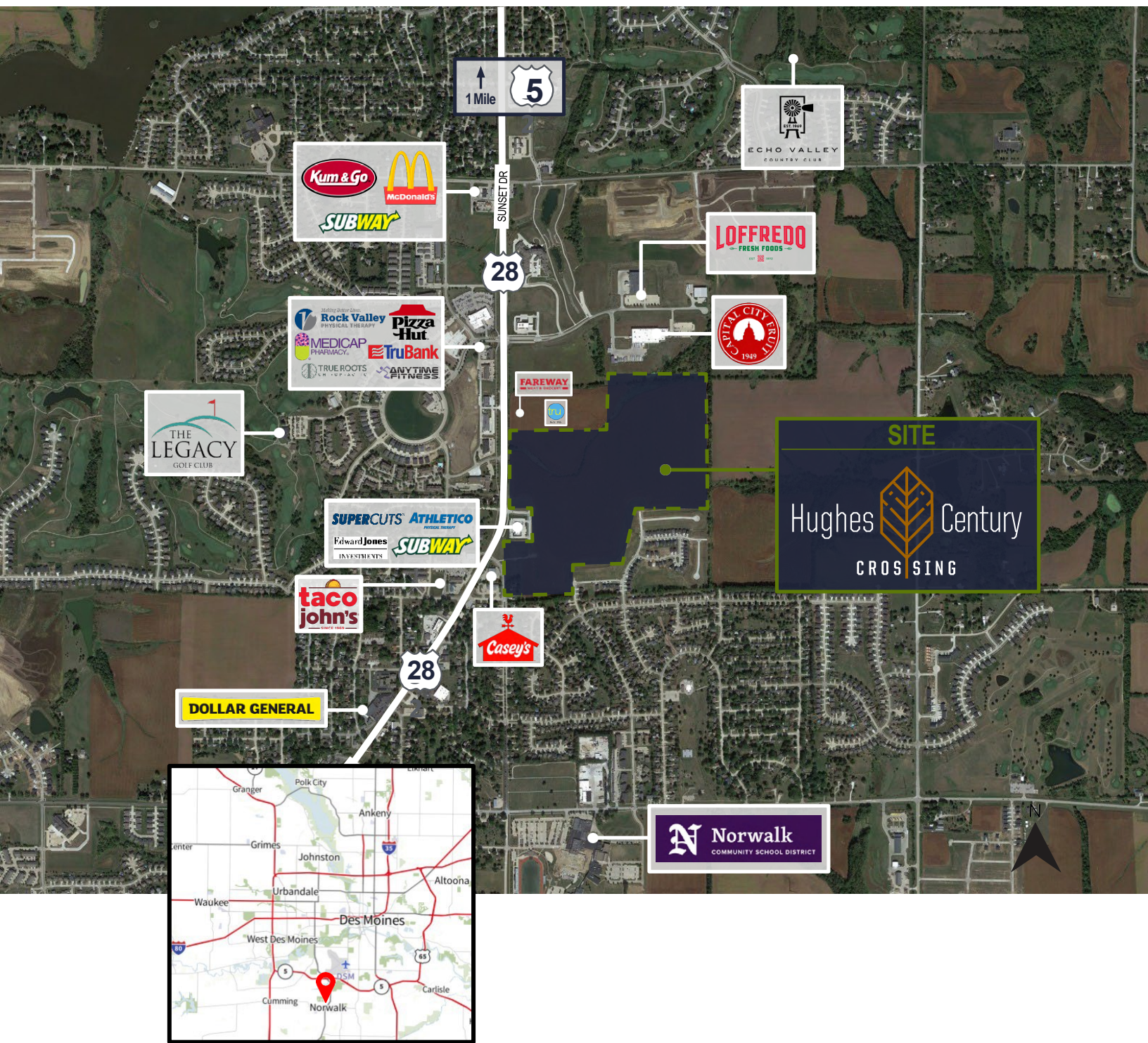


## Demographics Norwalk, IA

	1 Mile	3 Miles	5 Miles
Population	6,913	16,287	45,502
Households	2,681	6,146	18,605
Average HH Income	\$91,478	\$86,383	\$69,446



# Norwalk Trade Area



**Aaron Hyde**  
Senior Vice President  
JLL Des Moines  
+1 515 953 8834  
[aaron.hyde@jll.com](mailto:aaron.hyde@jll.com)

**Nick Anderson**  
Associate  
JLL Des Moines  
+1 515 729 6015  
[nicholas.anderson@jll.com](mailto:nicholas.anderson@jll.com)

The information contained herein has been given to us by the owner of the property or other sources we deem reliable. We have no reason to doubt its accuracy, but we do not guarantee it. All information should be verified prior to purchase or lease. Jones Lang LaSalle Brokerage, Inc. is a licensed broker in the State of Iowa.