

Chelsea, NYC *Retail Opportunity*

118 WEST 27TH STREET
BETWEEN 6TH & 7TH AVENUES



COREY J. ZOLCINSKI
212 812 5707
COREY.ZOLCINSKI@JLL.COM

118 West 27th Street



SIZE

Ground Floor: 3,470 sf
Lower Level: 3,915 sf

CEILINGS

Ground Floor: 15'7"
Lower Level: 10'6"

FRONTAGE

18'

POSSESSION

Immediate

NEIGHBORS

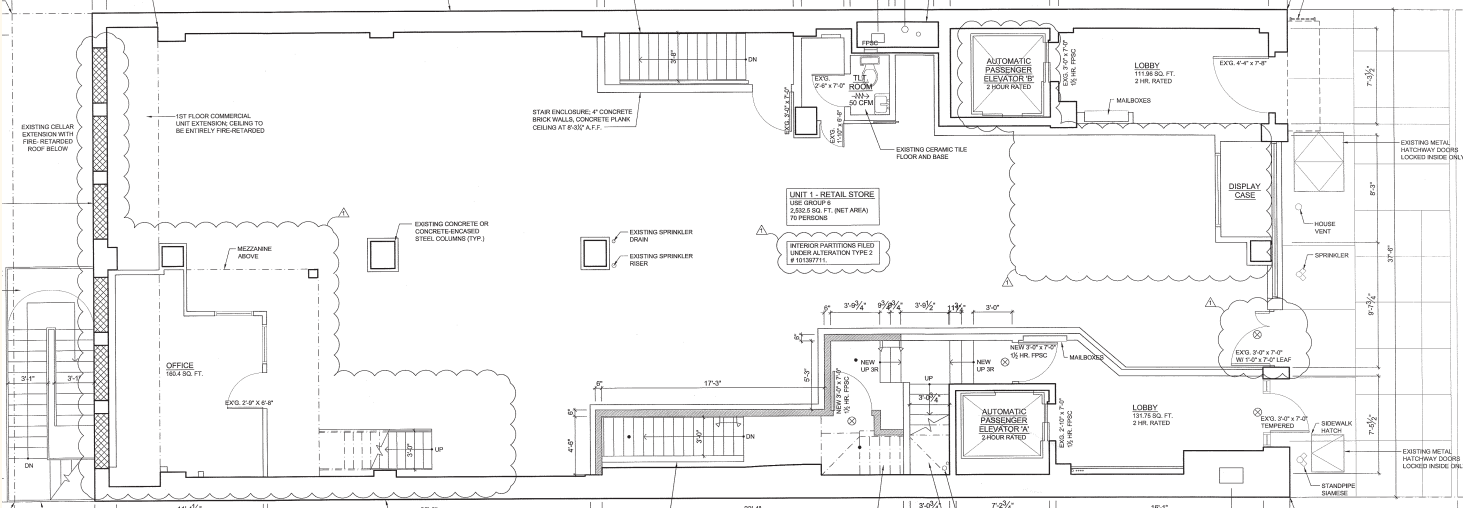
- | | |
|----------------|-------------------------------------|
| Whole Foods | Oscar Wilde |
| Fairway Market | Variety Coffee Roasters |
| Chipotle | The Wilson |
| Just Salad | My Pets Wellness |
| Dig Inn | Barn Joo |
| Starbucks | Tacombi |
| Fit Hit | HG Stones |
| Planet Fitness | Mile High Run Club |
| The Ainsworth | Manhattan Center for Kitchen & Bath |

FEATURES

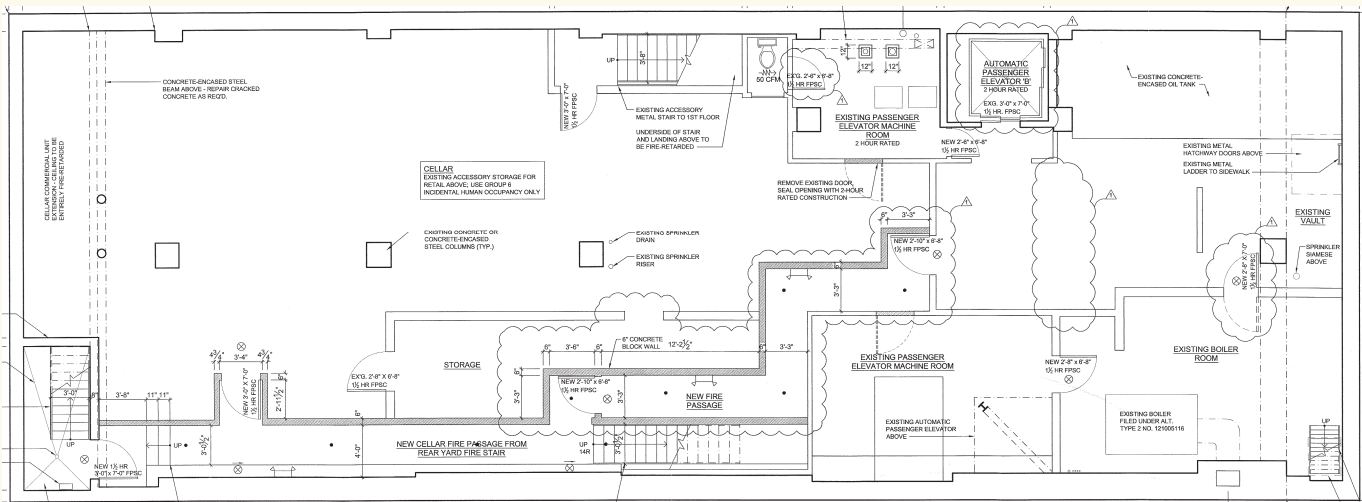
- Newly renovated space with new store front and secure entranceway
- Steps from the Fashion Institute of Technology with over 9,000 students and faculty members
- Centrally located between the High Line, Chelsea Market, Hudson Yards & NoMad
- 5-min walk to Madison Square Garden and Penn Station
- Near 28th Street 1-line Subway station

118 West 27th Street

Ground Floor | 3,470 sf



Lower Level | 3,915 sf



Jones Lang LaSalle Brokerage, Inc. | 330 Madison Avenue New York, NY 10017

DISCLAIMER Although information has been obtained from sources deemed reliable, neither Owner nor JLL makes any guarantees, warranties or representations, express or implied, as to the completeness or accuracy as to the information contained herein. Any projections, opinions, assumptions or estimates used are for example only. There may be differences between projected and actual results, and those differences may be material. The Property may be withdrawn without notice. Neither Owner nor JLL accepts any liability for any loss or damage suffered by any party resulting from reliance on this information. If the recipient of this information has signed a confidentiality agreement regarding this matter, this information is subject to the terms of that agreement.

©2025 Jones Lang LaSalle IP, Inc. All rights reserved.

