



For Sublease

**323 Sola Drive
Gilberts, IL 60136**

17,594 SF Available with 14k SF Yard

Sublease Highlights

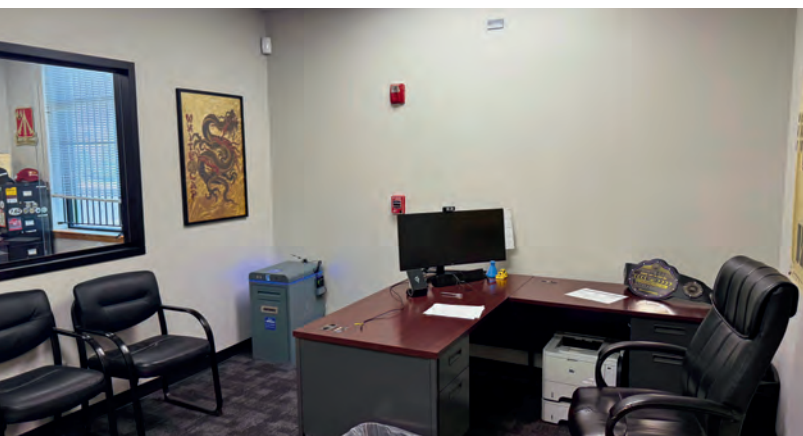
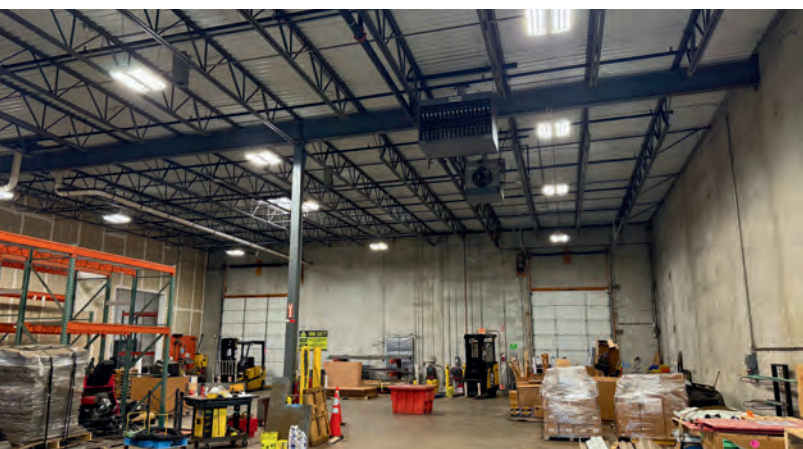
- 17,594 SF total sublease availability
 - 2,443 SF office
- 14,000 SF secure/fenced yard
- High-image corner unit
- 20' clear height
- LED lighting
- 1 dock, 1 drive-in (both 14'x10')
- 400 amps at 480v, 3 phase
- 30 dedicated parking spots in front
- Built in 2007
- Low Kane County taxes
- Taxes: \$0.73 PSF
- CAM: \$1.27 PSF
- Sublease expiration: 1/31/2031
- Rental Rate: STO

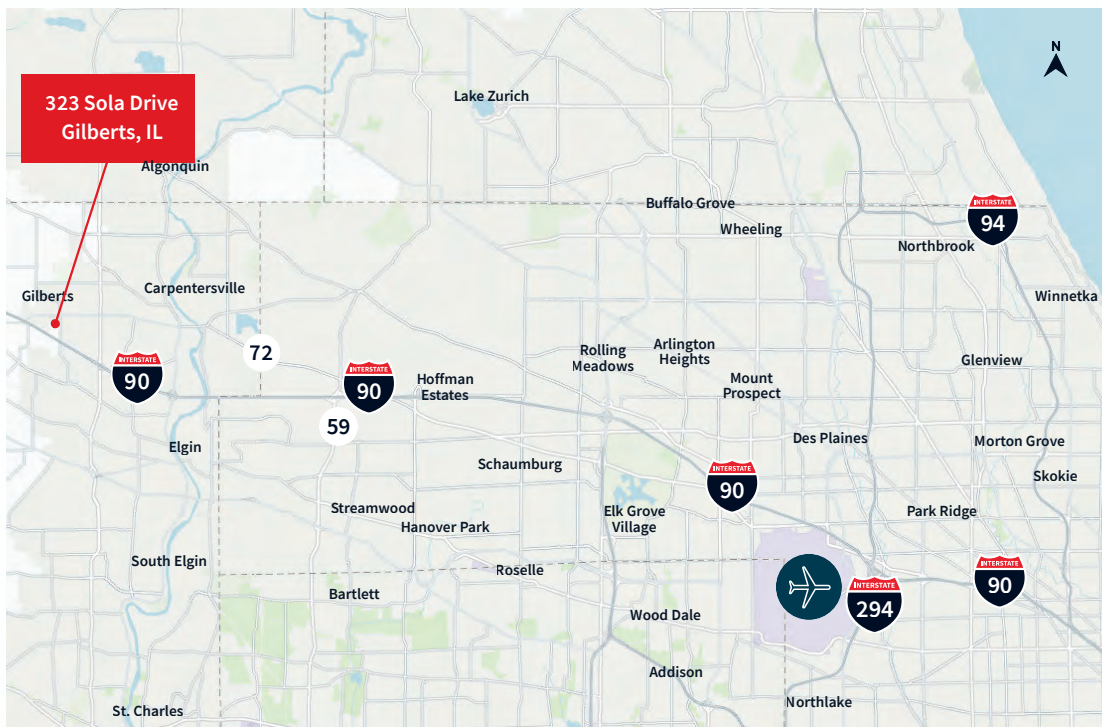
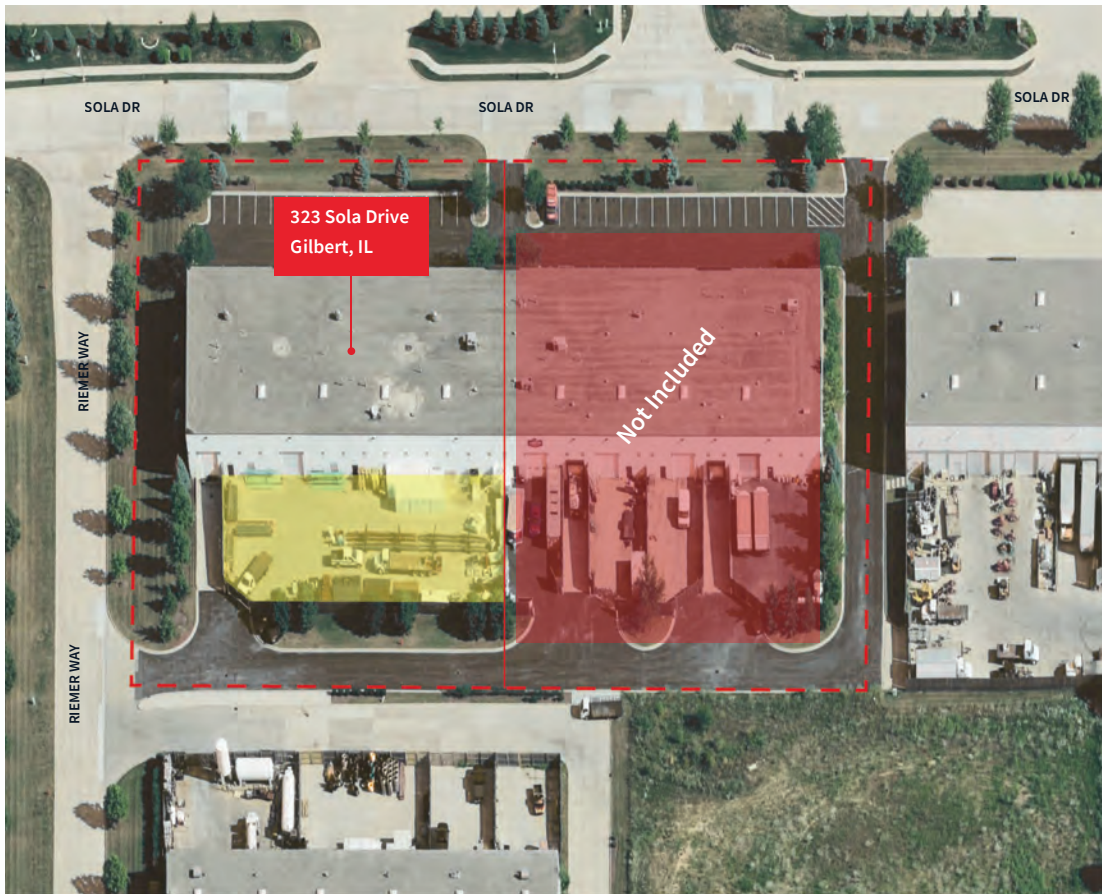


Robert Tamillo
robert.tamillo@jll.com
+1-847-927-0629

Tim Lisy
tim.lisy@jll.com
+1-630-430-4640

Garrett Johnson
garret.johson@jll.com
+1-262-347-9540





Although information has been obtained from sources deemed reliable, neither Owner nor JLL makes any guarantees, warranties or representations, express or implied, as to the completeness or accuracy as to the information contained herein. Any projections, opinions, assumptions or estimates used are for example only. There may be differences between projected and actual results, and those differences may be material. The Property may be withdrawn without notice. Neither Owner nor JLL accepts any liability for any loss or damage suffered by any party resulting from reliance on this information. If the recipient of this information has signed a confidentiality agreement regarding this matter, this information is subject to the terms of that agreement. ©2025 Jones Lang LaSalle IP, Inc. All rights reserved